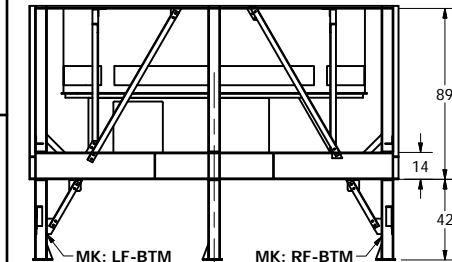
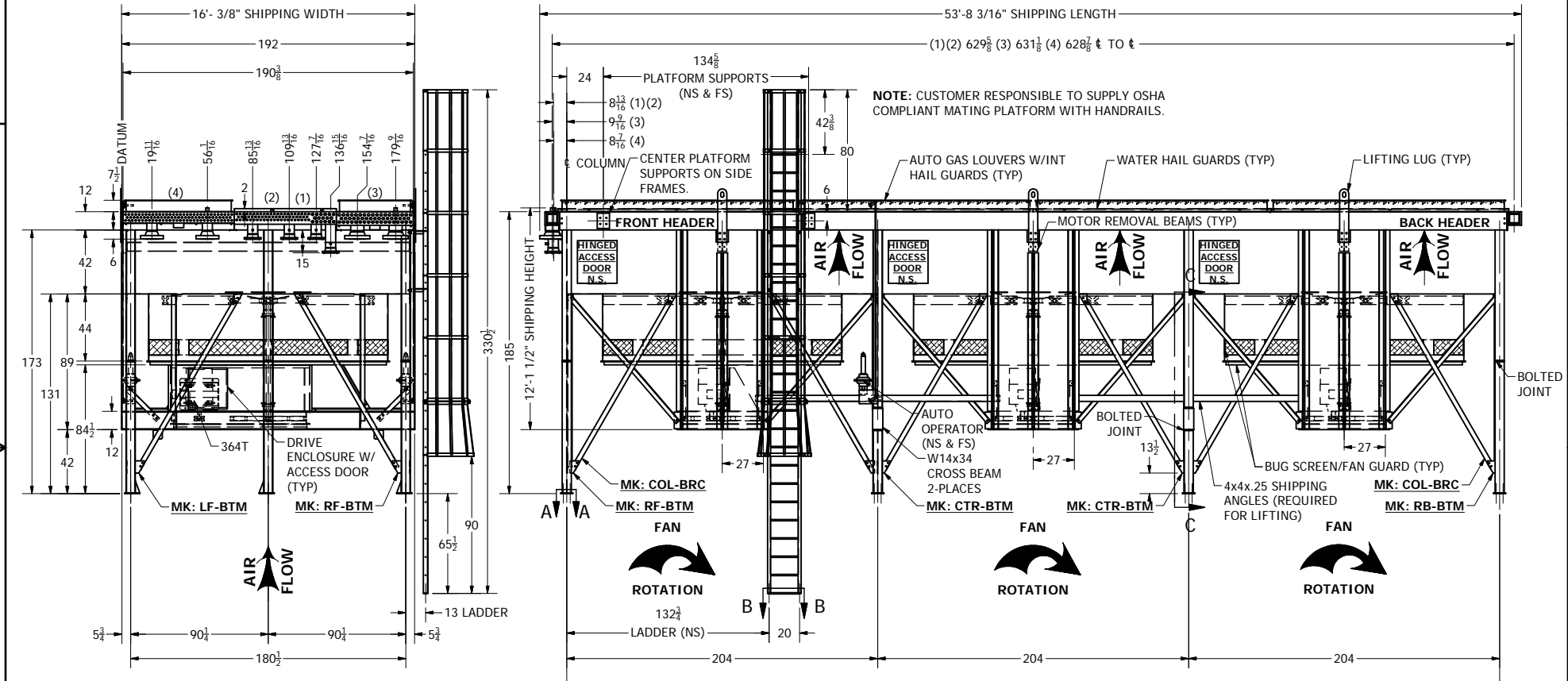
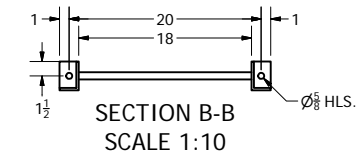
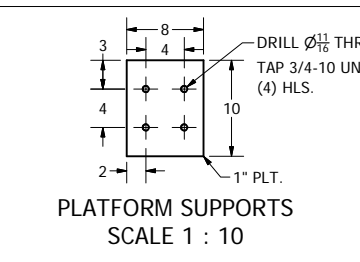
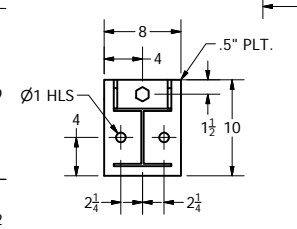


ITEM	SERVICE	MAWP	CODE	INLET	OUTLET	V/D/TEMP	DIM B	DIM C	LOUVERS	BUG SCREEN	DRIVE	FAN	FINISH
1	EJW (COMB) 74 GALS	150 PSI @ 350/-20F	NONE	6-150 RFWN	6-150 RFWN	1-3000# HALF (2) .5-3000#	-	-	-	YES (SOFT)	ELECTRIC MOTOR DRIVE SHEAVES, BELTS & GUARDS BY AXH (3) 40HP, 1200RPM, 460/3/60 NEMA, TEFC, MOTORS	(3) 156" OD MOORE 10K S60 MAG VT HD 6- BLDS, 26.4° PA, RH ROTATION 154 RPM @ 36 HP REQ'D  2.6875" OD BORE W/ .625 x .3125 KWY	STRUCTURE SIDE FRAMES FAN GUARD CAGED LADDER GALVANIZED  HEADERS METALIZED
2	AW (COMB) 125 GALS	150 PSI @ 350/-20F	NONE	6-150 RFWN	6-150 RFWN	1-3000# HALF (2) .5-3000#	-	-	-				
3	IC 31.41 CU.FT.	845 PSI @ 350/-20F	ASME	8-600 RFWN	8-600 RFWN	1-6000#	-	-	AUTO				
4	AC 23.13 CU.FT.	1440 PSI @ 350/-20F	ASME	6-900 RFWN	6-900 RFWN	1-6000#	-	-	AUTO				



SECTION A-A  
SCALE 1 : 10  
JACKSCREW W/ GUSSETTS  
(12 PLACES)



JOB #	TAG #	LOCATION	JOB #	TAG #	LOCATION
130724A	13353-B	UTICA/ARBAUGH/UNIT#3	130724I	13361-B	UTICA/MORRISTOWN/UNIT#5
130724B	13354-B	UTICA/ARBAUGH/UNIT#4	130724J	13362-B	UTICA/MORRISTOWN/UNIT#6
130724C	13355-B	UTICA/ARBAUGH/UNIT#5	130724K	13363-B	UTICA/GALLOWAY/UNIT#1
130724D	13356-B	UTICA/ARBAUGH/UNIT#6	130724L	13364-B	UTICA/GALLOWAY/UNIT#2
130724E	13357-B	UTICA/MORRISTOWN/UNIT#1	130724M	13365-B	UTICA/GALLOWAY/UNIT#3
130724F	13358-B	UTICA/MORRISTOWN/UNIT#2	130724N	13366-B	UTICA/GALLOWAY/UNIT#4
130724G	13359-B	UTICA/MORRISTOWN/UNIT#3	130724O	13367-B	UTICA/GALLOWAY/UNIT#5
130724H	13360-B	UTICA/MORRISTOWN/UNIT#4	130724P	13368-B	UTICA/GALLOWAY/UNIT#6

FOR: AG EQUIPMENT CO.	ESTIMATED DRY WEIGHT	83,300#
P.O. #: 205123		
CUST. TAG #: SEE TABLE		
USER: MARKWEST		
JOB SITE: SEE TABLE		
JOB #: 130724		
DR: BV	DATE: 11/8/2013	
CK: JS	DATE: 11/8/2013	

AXH air-coolers

CERTIFIED DRAWING FOR: QUANTITY: 16

MODEL 156-3ZF

SIZE: DWG NO: 130724-CRT

SCALE: FULL DATE: 11/8/2013 SHEET 1 OF 1

**RELEASED**  
FABRICATION OF THIS ORDER HAS BEGUN

\*NOTE\* Please be aware that if any changes are made they may result in additional manufacturing and engineering costs and may also adversely impact the current scheduled shipping date.

REV	DESCRIPTION	BY	CK	DATE