

BULLETIN

Newsletter & Journal of

CASINO & DISTRICT HISTORICAL SOCIETY INC.

ABN 18 083 789 097

AUGUST 2023

Phone President

0438621233

Phone Secretary

Mobile

0478704772

Volume 64 No 3



Location 31B Walker Street, Casino, NSW 2470

www.casinohistoricalmuseum.com email: casinohistorymuseum@outlook.com

MUSEUM HOURS

Wednesday, Friday: 10am—2pm.

Sunday or other days by appointment. Group bookings welcome.

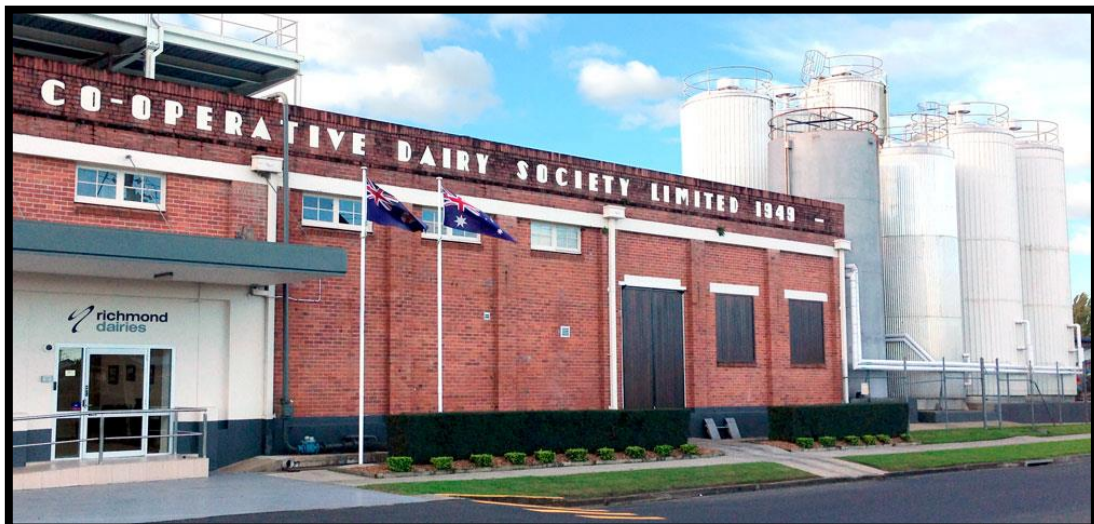
Admission: Adults \$5, Children and students free.

Membership: Single \$15, Couples \$25, Junior \$5.

BULLETIN ISSUED: February, May, August, November.

GENERAL MEETINGS: 2nd Saturday – March, June, September, November 10am at Museum.

COMMITTEE MEETINGS: 1st Monday of month at 9.45am at Museum.



RICHMOND DAIRIES CASINO

QUARTERLY MEETING

PRESIDENTS REPORT.

Good Morning and welcome to all. Thanks for making the effort to come along to our quarterly meeting in this rather cool weather.

Once again we have had a great response from our Saturday DIY BBQ's, patronage and help wise from our dedicated members. Our Beef Week BBQ was once again a huge success. A rather larger BBQ was donated to us for the day from Alan Berry, Richmond River Hire and Hardware, made the job much easier for all. A letter of thanks has been sent to Alan.

We have had another Grandparents Day which went off rather slowly. We require a lot more advertising but things will change shortly, our web site and Face Book are up and running. Thanks to our computer literate folk, hopefully a real winner.

A sincere thanks to all for your huge effort put into making the museum functional and a pleasure to be a member. Without all the effort things would be much different.

We are still desperately looking for new members, please keep trying. We also have a great raffle running up to the truck show. If possible please try to sell a few tickets as every bit counts.

Warren Armfield
President.

PRESIDENT	WARREN ARMFIELD
VICE PRESIDENTS	BARRY DENNIS, GRAEME ROONEY
SECRETARY	GEOFF AUSTIN
ASSISTANT SECRETARY	WAYNE HOLLIS
MINUTE SECRETARY	SUE GIBSON
PUBLIC OFFICER	NINA HANDFORD
TREASURER	ROBYN NESBITT
BULLETIN EDITOR	DOROTHY SULLIVAN
DIGITAL MEDIA CO-ORDINATOR	DOROTHY SULLIVAN
ARCHIVER	HEIDI SIMPSON
COMMITTEE MEMBERS	RITA PHILPOTT
	JOHN NEWMAN

MAJOR SUPPORTERS

**GILL'S ENGINEERING
HIGGIN'S NEWSAGENCY
CASINO PEST CONTROL
RICHMOND RIVER HIRE & HARDWARE**

RICHMOND DAIRIES

Richmond Dairies opened its 1 million Butter Factory in 2016 in Casino. The butter factory is one of the most modern in Australia and will produce butter for the domestic and international market.

Richmond Dairies believes the plant is the only commercial butter factory of its type in NSW and Qld.

Richmond Dairies and our parent company Longley Heritage in the UK are regarded as world leaders in dairy innovation. They have dry products yogurt powder and skim milk. Richmond Dairies is built upon a reputation for reliable, consistent and quality supply of superior food ingredients both in Australia and internationally.

They have a range of frozen milk products, cream, cream blends and milk concentrates, as well as milk based powders that are used by food manufacturers around the world.

RICHMOND DAIRIES
100 Dyraaba St
Casino

Ph 66601111



CASINO RSM CLUB
162 Canterbury St Casino
Ph 66621666

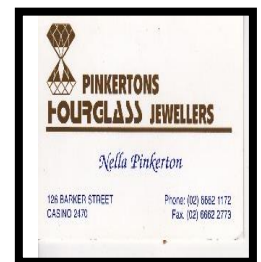
CASINO RAILWAY STATION

Casino Railway Station is a heritage listed railway station on the North Coast line in NSW. Opening on 22nd September 1930, it serves the town of Casino in the Richmond Valley Council area.

The original Casino Railway Station (now named Old Casino railway station) opened on 19th October 1903 when the Murwillumbah line was extended from Lismore, ultimately reaching Grafton in 1905. However when the North Coast line was extended from Kyogle to Queensland border, it would not pass through the Old Casino Station, as that segment of the line would become a branch line to the new main line, so it was necessary to build a new mainline station to serve Casino. The new Casino Railway Station opened on 22nd September 1930.

The station originally was an island platform. In October 1990, the eastern platform was decommissioned, later being filled in and redeveloped as a coach stop. The Murwillumbah line branches off immediately north of the station, although it has not been used since 2004, the track is still in place and a short distance at Casino is used for occasional shunting movements.

Casino had a locomotive depot with a roundhouse until it closed on 25th July 1986. It re opened in 1996 when it was leased to Northern Rivers Railroad.



CASINO FOOD
CO-OP
John Seccombe
Chairman
PH 0427633127



Old Casino Railway 1903



Second Casino Railway.

1870'S

In 1870 Casino was described as a drab little village, though there were some buildings of fair pretensions by Robert Leycester Dawson, whose family settled at Bentley in that year. (His father R B Dawson was Crown Lands Commissioner for the Clarence, Richmond and Tweed from 1867 to 1881.) Dawson wrote the roads were almost non-existent, only rough bush tracks being available and that nowhere on the Richmond were there any banks, churches, newspapers or telegraph lines. The streets were unformed and unmetalled and in wet weather were in a indescribable state of slush and mud. The track from the crossing followed the river down to what is now Walker Street, around the present Bank of NSW now Wespac site, along to where the Motor Registry was and thence onto Tomki and Lismore.

Dawson mentioned some of the leading citizens of Casino in 1870 and their various occupations. Thomas Greenstreet had become proprietor of the Durham Ox Inn from 1869. At the river end of Walker St were Peter Walsh schoolmaster, Henry Van de Waerden, cabinet maker and builder, who lived opposite the school, John Grime Storekeeper a new and much more substantial premises where the main Primary School buildings now stand. the Clerk of Petty Session, Chas Moore who had his office, together with the Courthouse and lock up opposite Grime's store and James Brittain, whose hotel occupied the site of the present Commercial Hotel. At the eastern end of Barker Street was John Brown's Tattersalls Hotel, AJ and WG Simpson saddlers, and A C Simpson's store on the corner of Walker and Barker Streets. On the other side of Barker St was James Stock's store.

Other citizens of the town noted by Dawson included John Barling licenced surveyor, C H Fawcett who had been Police Magistrate from 1862-1869, and who afterwards was elected as first member for the Richmond River Constituency, P Dillon and T Gray Blacksmiths, T J Carlill Butcher, J Askew baker, G Marsh tinsmith together with a number of other businessmen and private citizens. He estimated the town population at somewhat less than three hundred.

About 1870 A J and A C Simpson possibly with help of Mr B Balmer, attempted a production of a newspaper. 'The Advocate' which appeared as first as handwritten foolscap sheets and issued from the Durham Ox Inn. In December 1870 the first issue of the 'Richmond River Express' and Tweed Advertiser appeared, and published weekly there after by the proprietor Robert Gordon Balmer, in a building on the south side of Barker Street near Brittain's Hotel.

.....

CAPTAIN P L ROBERTS

Captain Percy Lionel (Fred) Roberts died in Coraki in August 1930 at the age of 70.

Many Mid Richmond people will remember his family – daughters Alice, (Mrs Jenkins), Milly (Mrs Allen) Ida (Mrs James), and Lorna (Mrs Sharpe), and sons Claude and Thomas. An Englishman he was apprenticed as a youth to Shaw and Saville Company, sailing in such full rigged ships as 'Pluades' and the "Lady Jocelyn'. In the early 1870s he left the deep water ships, and went on coastal vessels in Australia joining the schooner 'Alpha' in 1876, trading between the Richmond River and Sydney in the timber industry.

Leaving the Alpha' in 1882 he entered the service of the late Mr FG Crouch, and took charge of the steamer 'Ada May' and punt, employed for the carriage of goods between Coraki and Casino in connection with Mr Crouch's extensive store business in Casino.

Subsequently he entered the service of the North Coast Steam Navigation Co, and for many years was the skipper of the several boats employed in company's river service, including the "Casino" and "Irvington". At that time all goods for Casino and the Upper Richmond were discharged from the ocean boats at Coraki and taken up the South Arm to Irvington by drogher.

Maize was also freighted to Coraki for shipment by ocean vessels and the extensive drogher work was most laborious both day and night.

In the nineties the shoal condition of the Richmond entrance was responsible for the frequent stranding of ocean traders, and the services of the droghers were frequently requisitioned to assist in the salvage work. Captain Roberts wide shipping experience made his services particularly valuable on such occasions, and also during hazardous flood periods. About 1910 he joined the service of the Coraki Co-operative Dairy Co, and remained in the position then taken until the time of his death. Throughout his long shipping career he never had any serious mishap. His obliging disposition made him a general favourite, and nobody will be more missed by the farmers with whom he has been so long associated.

ETHEL TAYLOR – 1885-1982

Ethel Taylor was born in Sheffield Northern England in 1885. She trained to be a nurse. Ethel and her sister Lesley, also a trained nurse answered an advertisement in a London newspaper for nurses to work on troop ships after World War 1. The job offered free passage and the ship they worked on the 'Ceramic' was bound for Australia.

In 1922 a branch of the Bush Nursing Association and were stationed at Urbenville and Terrace Creek. The job taught the sisters to learn to ride. It was by horseback that they travelled the miles over bush tracks and river crossings to reach people in isolated areas. They had few drugs or surgical instruments but they successfully delivered babies, attended saw mill accidents and fulfilled many other medical tasks.

In the years that followed, Ethel spent time working in the Upper Richmond River region, Woodenbong and the Bonalbo Hospital when it was established in 1930. Her final years with the Bush Nursing Association were spent relieving other nurses in Western NSW.

After the time of Ethel's retirement many Bush Nursing Associations were being closed as better communication and ambulance services were provided. She later received the Imperial Service Order for her services to the nursing profession.

CIRCUS COMES TO TOWN

A Mr Lowe of Fairy Hill was the victim of a nasty accident on the Kyogle Road many years ago. He and a companion Mr Casey were driving in a sulky when they encountered a travelling circus, the 'Paraphernalia' of which included a couple of camels. At the site of these the horse took fright and bolted, precipitating the occupants onto a barbed wire fence. Mr Lowe came out of the ordeal pretty badly, for beside being rendered unconscious, he sustained a broken thumb and several abrasions. Mr Casey however escaped injury.

RICHMOND
VALLEY
COUNCIL
Cnr Walker St &
Graham Place

Ph 66600300

SMITH'S JOINERY (CASINO)
From Flat Pack to Specialised Custom Designed Kitchens
All Styles to Suit your Budget - Free Quotes
2 Casino Drive - Industrial Estate
PO Box 3 CASINO 2470
ABN: 12 002 141 362
Ph: 02 6662 3522
Fax: 02 6662 4903
Email: smijoi@smithjoinery.com
*Kitchens *Laundry *Office *Robe Units
*Vanities *Commercial Joinery
*Shop Fitting Lic. No. R71613

firstnational
Casino
Mark Formaggini
Principal / President / Sales
M 0418 622 779 P 02 6662 7766
E mark@firstnationalcasino.com.au
firstnationalcasino.com.au
1/2 Walker Street
Casino

JACQUELINE YATES
Chartered
Accountant
North Street
Ph 66622077

EXCITING ADVENTURE

A very exciting adventure befell two children of Mr Gay's, who lived about a mile past Alderman Maddens on the Kyogle Road. They were driving in a sulky towards Casino when a cow charged them over the back of the sulky. She was very determined and battered the back of the trap about while the youngsters were flogging the horse along. At last the cow raced up and passed the sulky and drove one of its horns fully six inches into the horses chest. The children managed to turn the horse and sulky off the road, and the cow went by. They led the horse to Mr Maddens house and Mr Madden at once rode in to the police to have the cow destroyed. On his way in Alderman Madden said he had the liveliest flutter for 200 yards that his horse has done, as the same cow gave chase after him.

On arrival in Casino Mr Madden explained the circumstances to Sargeant Draper, and he went out with Mr Madden and the Stock Inspector, Mr L Devlin, to where the cow had been. Sargeant Draper shot her and Mr Devlin cut open her skull and found the brain diseased. Mr Northcott informed the Sargeant that he owned the cow but could not account for its sudden madness. The children were very frightened but were not injured. The horse was bleeding so badly that it is thought it would die. Probably Mr Devlin will be able to give us some idea of the cause of the disease.

.....

KING BILLY

In the early days the only crossing of the river at Casino was a rocky ford with no means of getting over it in time of floods.

The Governor of NSW, Sir Harry Rawson, visited the town in 1870 and the opportunity was seized upon to petition for the much needed bridge. The deputation was headed by the black-tracker Billy Webb, probably because he was King of the tribe, then numerically strong. Billy was all smiles- more smiles than words, and wearing a new shirt and a bowler hat. The Governor received him graciously.

The bridge was opened for traffic six years later, being the largest of its kind in the state at the time. Billy, crossing over it with the procession of town and district residents, looked on with an air of proprietorship. A night a ball was held under the light of numerous Chinese lanterns while 600 of Billy's people looked on from the banks of the river.

It was race time in Casino and the local tribe arranged to hold a corroboree with the profits to go towards a 'spree'. The ring was enclosed with a wall of bushes with a narrow opening at one end by way of a door. Here stood King Billy attired in tweed pants and his brass plate, acting as cashier, and calling out the price of admission, "Front seats one bob, back seats 2 bob" The back seats were small logs.

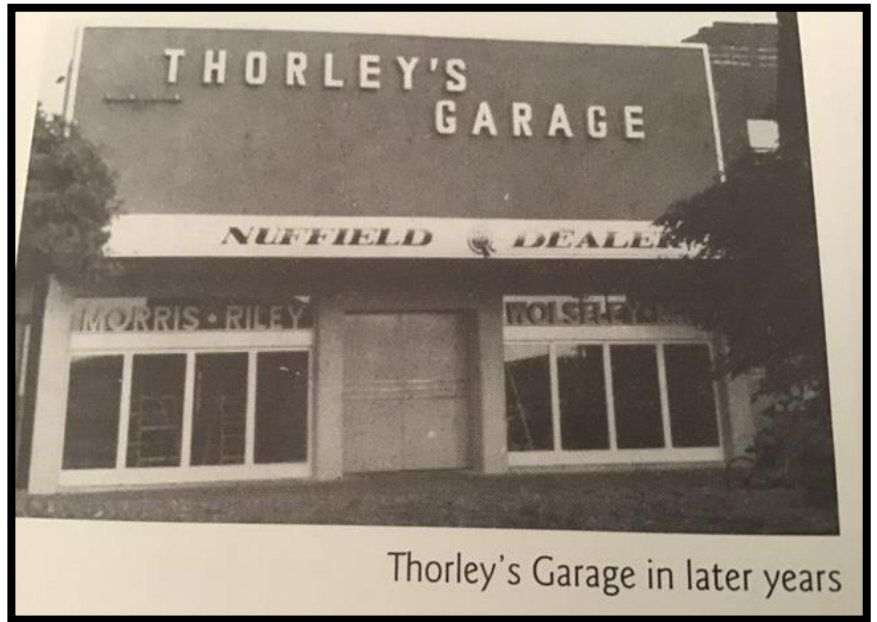


Be sure to get your ticket in our raffle, drawn at the Truck Show.
5TH AUGUST.

- 1ST Towels. etc
- 2nd Crochet Rug
- 3rd Queen Size Sheets.

THORLEY'S GARAGE

In late 1945 Malcolm Thorley, being a member of the institute of Mechanical Engineers, opened his Casino Garage business in premises owned by Mr Peter George in Walker St. Prior to coming to Casino he worked with General Motors in Sydney, and was invited to stay as something special was about to happen in the car trade. It was soon after that the Australian Holden Car was released. It was his ambition to own his own garage so he made Casino his home for his wife and family.



Thorley's Garage in later years

He obtained franchises for farm machinery. Morris cars and utilities. Nuffield tractors, Moffit Virtue milking machines and installed and sold irrigation plants, also Mercedes Benz cars, Hillman and Toyota vehicles. He was able to purchase the premises and modernized the building frontage and office area. He remembers when pig and calf sales days were the busy days in Casino. Mal was a member of the Road Safety Council. He held his office staff and mechanics in high regard and made many friends. Mal retired after 35 years, his work was also his hobby. He loved Casino and lived to see many changes.

Inside every older person is a younger person- wondering what the hell happened.

The more you praise and celebrate your life, the more there is in life to celebrate.

A gift consists not in what is done or given, but in the intention of the giver or doer.

ZINGY CHICKEN

4 chicken breasts. 1 egg beaten, ¼ cup soya sauce, 1 cup of crushed cornflakes.

Cut chicken into thickish strips. Combine egg and soya sauce and dip chicken into it. Coat with crushed Corn Flakes, place on a baking sheet on a baking tray and cook at 180c for 30-40 minutes.

.....

If money doesn't grow on trees, why do banks have branches
My wallet is like an onion. Every time I open it, it makes me cry.
Whatever you are doing, always give 100 per cent, unless your donating blood.
I am on a seafood diet. I see food and then I eat it.
Life always offers you a second chance. It's called tomorrow.

.....

Any members available to do door duty it would be appreciated.

	AUGUST SEPTEMBER OCTOBER 2023		
AUGUST			
Wednesday 2nd	B KEEP	W ARMFIELD	
Friday 4th	B DENNIS	R PHILPOTT	
Wednesday 9th	D GREENSTREET	G ROONEY	
Friday 11th	J HEDISON	D JAMES	
Wednesday 16th	G ROONEY	D GREENSTREET	
Friday 18th	D JAMES	G AUSTIN	
Wednesday 23rd	B DENNIS	R PHILPOTT	
Friday 25th	D SULLIVAN	S GIBSON	
Wednesday 30th	W ARMFIELD	B KEEP	
SEPTEMBER			
Friday 1st	B DENNIS	R PHILPOTT	
Wednesday 6th	B KEEP	J HEDISON	
Friday 8th	G AUSTIN	S GIBSON	
Wednesday 13th	D GREENSTREET	G ROONEY	
Friday 15th	W ARMFIELD	D SULLIVAN	
Wednesday 20th	G ROONEY	D JAMES	
Friday 22nd	B DENNIS	R PHILPOTT	
Wednesday 27th	W ARMFIELD	S GIBSON	
Friday 29th	D SULLIVAN	G AUSTIN	
OCTOBER			
Wednesday 4th	B KEEP	J HEDISON	
Friday 6th	B DENNIS	R PHILPOTT	
Wednesday 11th	D GREENSTREET	S GIBSON	
Friday 13th	W ARMFIELD	D SULLIVAN	
Wednesday 18th	G ROONEY	D JAMES	
Friday 20th	B DENNIS	R PHILPOTT	
Wednesday 25th	S GIBSON	W ARMFIELD	
Friday 27th	D SULLIVAN	G AUSTIN	
PH WAYNE 0414241512	DOROTHY 0418660276	If unavailable for roster duty	