



## **FOR IMMEDIATE SALE**

### **ONE (1) 2500 KVA GE COMPARTMENTALIZED PADMOUNT TRANSFORMER**

**STOCK NO. PMT-07-1001**

#### **SPECIFICATIONS:**

ONE (1) 2500 KVA GENERAL ELECTRIC COMPARTMENTALIZED PADMOUNT TRANSFORMER, 3 PHASE, 60 HERTZ, CLASS OA, 65 DEG. C RISE, 5.76% IMPEDANCE, ALUMINUM WINDINGS, LIVE FRONT, RADIAL FEED, DRAIN & SAMPLE VALVE, DIAL TYPE THERMOMETER, LIQUID LEVEL GAUGE, PRESSURE RELIEF VALVE.

MFG. 1996

HIGH VOLTAGE: 4160Y/2400 BIL: 60 KV

LOW VOLTAGE: 480 DELTA BIL: 30 KV

TOTAL WEIGHT: 13,600 LBS.

CORE & COILS: 5,400 LBS.

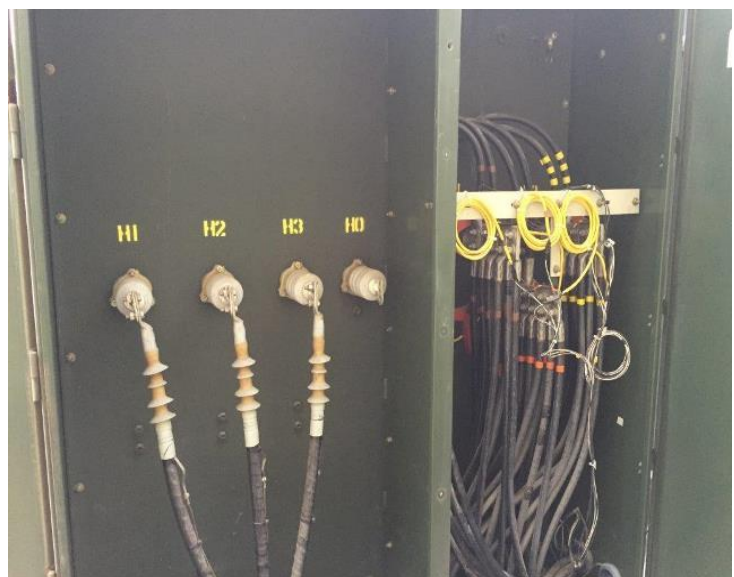
TANK & FIT.: 4,200 LBS.

FLUID: 4,000 LBS. (560 GALS.)

DIMENSIONS: 90"H X 77"W X 74"D

HV BUSHING: 49.5"H

LV BUSHING: 54"H & 46"H





**CONDITION:** Good / Functional  
**WARRANTY:** As Is / Where Is  
**FOB:** Your Truck/Warehouse USA  
**PRICE:** Call For Quotation

CTG Power Systems International, LLC (CTG) is the seller of this equipment and will facilitate all aspects of the equipment transaction. CTG's Terms and Conditions governing used surplus equipment will apply. Additional services such as shipping and insurance, engineering and installation are available through CTG and will be performed under a separate contract, if requested.

A non-revocable purchase order accompanied by verification of the availability of funds is required. Inspection is encouraged and will be arranged within 72 hours advance notice. Buyer will be required to render a non-refundable deposit of up to 25% of the total purchase price to secure the option to purchase and financial closing with balance due 75% within 30 days of inspection and no later than 5 days prior to load out, whichever event occurs earlier.

**For more information and firm proposal, please contact CTG:**

**CTG POWER SYSTEMS INTERNATIONAL, LLC (CTG)**

401 E. Jackson St. Ste. 2340-F12

Tampa, Florida 33602 USA

Tel: +1 (813) 920-3500 | Fax: +1 (941) 220-6612 | WhatsApp: +1 (813) 918-0762

Email: [Sales@CTGPowerSystems.com](mailto:Sales@CTGPowerSystems.com) Website: [www.CTGPowerSystems.com](http://www.CTGPowerSystems.com)