



CTG

Power Systems
International LLC

Qualifications, Experience & Capabilities Summary Presentation



ABOUT CTG

CTG is a long-standing, customer centric and highly reputable international power generation services company.

- ❑ **CTG Power Systems International, Inc. (CTG-PSI)** is our flagship and corporate parent company providing full-service engineering, procurement, construction, project management, logistics support, commissioning and maintenance services (EPCM) for the design, installation, modification and O&M of conventional fossil fuel fired and biomass power plants.
- ❑ **CTG Power Solutions, LLC (CTGPS)** is an affiliate company of CTG-PSI providing reliable fast track short and long term mobile rental power solutions utilizing various Solar, GE, Siemens and Mitsubishi Mobile Gas Turbine Generator Packages.
- ❑ **The Renewable Technologies Corporation** is a subsidiary company of CTG-PSI providing engineering and EPC services for the design, installation and modification of most any renewable energy power project with specific expertise in biomass power generation.
- ❑ **The Camelot Technologies Group International, Inc.** is a subsidiary company of CTG-PSI and remains a leader in the sale of new, used and refurbished heavy gas and diesel fired/reciprocating power generation equipment.

DIVERSIFIED GLOBAL ENERGY SOLUTIONS

CTG offers our clients a distinct competitive advantage including: Engineering, Procurement, Project & Construction Management Services (EPC) for a multitude of electrification projects. Simply stated, we do it better, faster, leaner, safer, with quality and at less cost than any other service providers.

Not only do we perform EPC and operations and maintenance services (O&M), our affiliate company, CTG Power Solutions LLC provides short and long term mobile rental power solutions worldwide.

For the last 25 years, CTG has been a reliable and trusted global leader primarily in the supply of new surplus, used and refurbished natural gas and reciprocating power generation equipment, technical support services, appraisal/valuations and consulting services.





Primary Market Segments

CTG Power Systems International, Inc. (CTG-PSI) www.CTGPowerSystems.com focuses on several diverse electrification opportunities in multiple energy market segments:

1. **Utility:** Peaking, combined-cycle, baseload power generation for utilities (e.g., IOUS, Municipals, RECs, CO-OPS).
2. **Industrial/Commercial:** Baseload, cogeneration and standby power generation for industrial and large commercial installations (e.g., paper and pulp, refining, heavy manufacturing, mining, hospitals, academia, shopping malls, data centers resorts).
3. **Interim Power Solutions:** Where short and long-term power is required to manage grid instability or unreliability, restoration of power in natural disasters and peak shaving.
4. **Emerging Grid:** Baseload generation for remote locations where small increments of additional high-reliability power is required (e.g., islands, military installations, developing economies).
5. **Blackstart Applications:** For larger land-based gas or diesel fired turbine power plants.
6. **Biomass, CHP and Waste-to-Energy Power Plants (Renewable Technology):** Gasification to biogas, syngas, methane, Combined Heat & Power

CTG-PSI's CORPORATE MISSION

COMPLETE TURN-KEY SOLUTIONS

From Concept to Reality

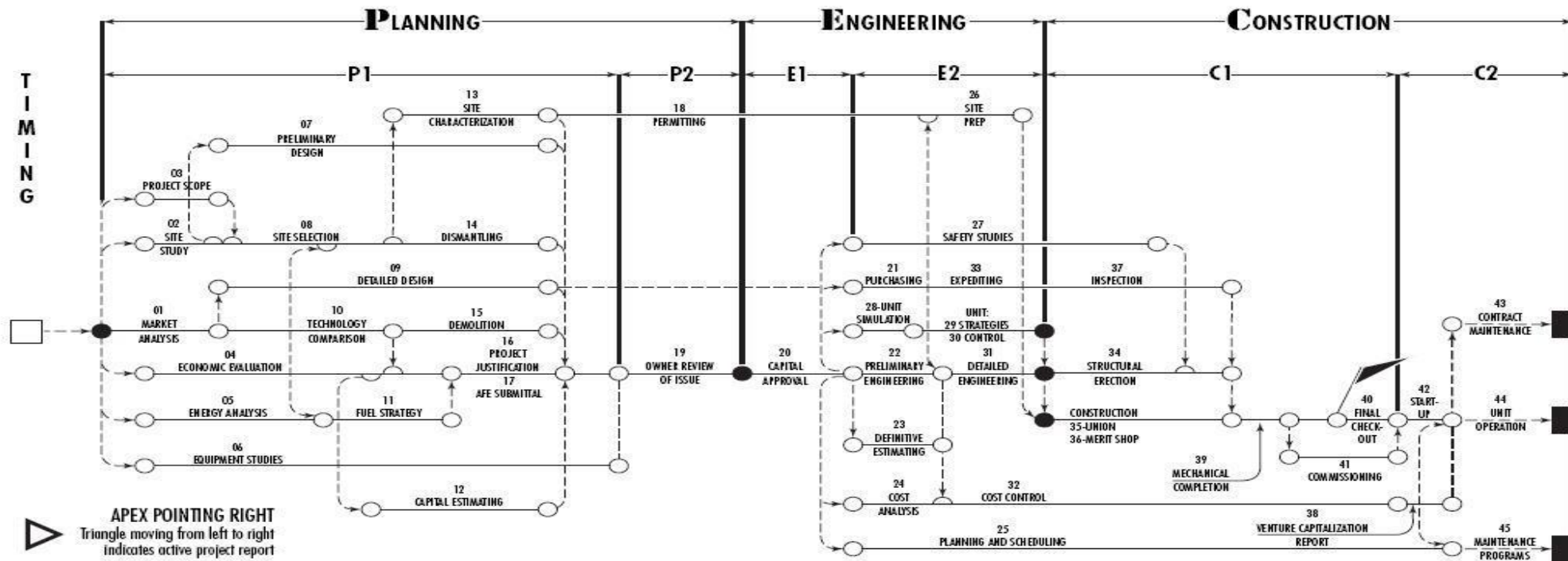
Utilizing internal resources, CTG-PSI provides in-house full-service project services, including:

- Land based and Mobile Rental Power
- Preliminary and Detailed Engineering & Design
- Procurement
- Project Management and Control
- Construction Management
- Start-up and Commissioning
- Plant Operation and Training
- O&M Services



Complete Project Design & Flow

CTG offers a full complement of turn-key services as the complete enterprise solution for independent, merchant and distributed power developers. We address each phase of the plant building process thoughtfully and strategically.



PLANNING

P1	01 MARKET ANALYSIS	16 PROJECT JUSTIFICATION
	02 SITE STUDY	17 AFE SUBMITTAL
	03 PROJECT SCOPE	
	04 ECONOMIC EVALUATION	P2
	05 ENERGY ANALYSIS	18 PERMITTING
	06 EQUIPMENT STUDIES	19 OWNER REVIEW OF ISSUE
	07 PRELIMINARY DESIGN	
	08 SITE SELECTION	
	09 DETAILED DESIGN	
	10 TECHNOLOGY COMPARISON	
	11 FUEL STRATEGY	
	12 CAPITAL ESTIMATING	
	13 SITE CHARACTERIZATION	
	14 DISMANTLING	
	15 DEMOLITION	



ENGINEERING

E1	20 CAPITAL APPROVAL
E2	21 PURCHASING
	22 PRELIMINARY ENGINEERING
	23 DEFINITIVE ESTIMATING
	24 COST ANALYSIS
	25 PLANNING AND SCHEDULING
	26 SITE PREPARATION
	27 SAFETY STUDIES
	28 UNIT SIMULATION
	29 UNIT STRATEGIES
	30 UNIT CONTROL
	31 DETAILED ENGINEERING
	32 COST CONTROL
	33 EXPEDITING

CONSTRUCTION

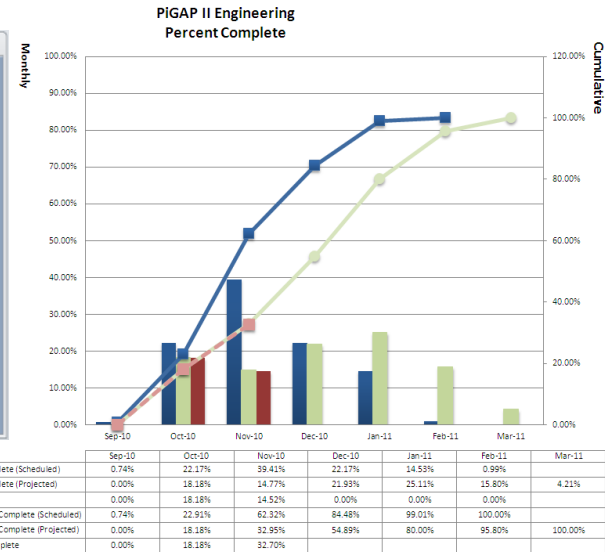
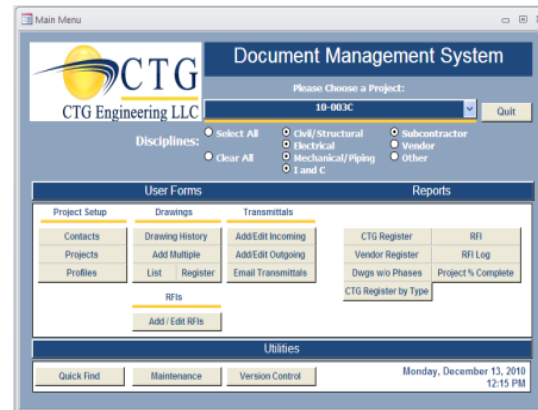
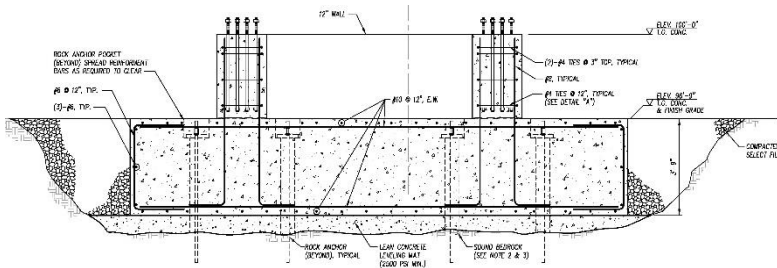
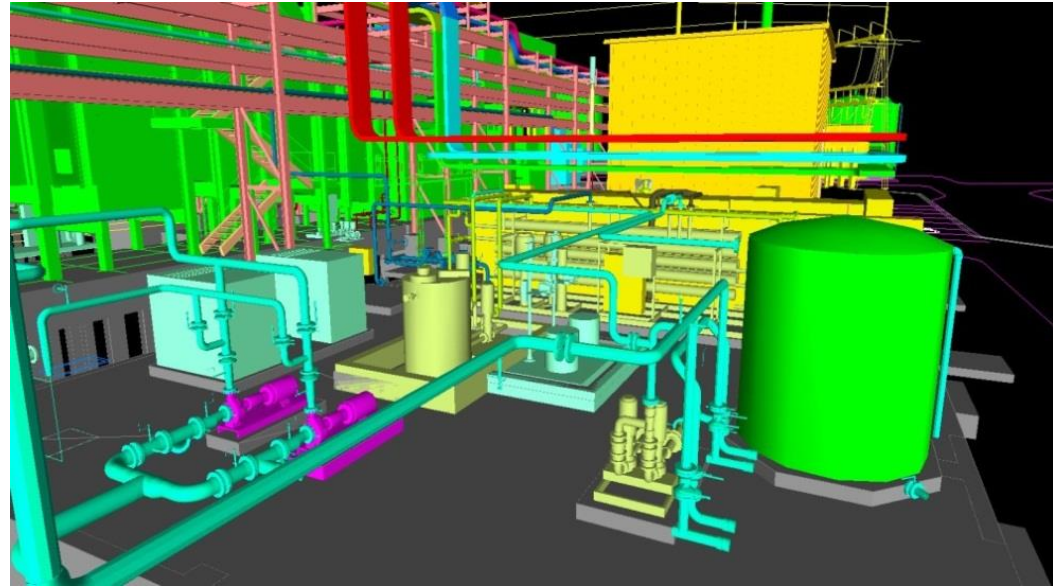
C1	34 STRUCTURAL ERECTION
	35 CONSTRUCTION-UNION
	36 CONSTRUCTION-MERIT SHOP
	37 INSPECTION
	38 VENTURE CAPITALIZATION REPORT
	39 MECHANICAL COMPLETION
	40 FINAL CHECK-OUT
	41 COMMISSIONING
C2	42 START-UP
	43 CONTRACT MAINTENANCE
	44 UNIT OPERATION
	45 MAINTENANCE PROGRAMS(MRO)*

* MAINTENANCE-REPAIR-OVERHAUL

ENGINEERING EXCELLENCE

CTG relies on the experience and expertise of the CTG Engineering International (CTG-E) team which uses the latest technology software and systems to provide:

- Feasibility Studies
- Preliminary and Detailed Engineering & Design
- 3-D Modeling and Laser Scan
- Project & Configuration Control
- Licensed Engineers in all major disciplines
- Construction Bid Packages
- Construction Engineering & Start-up Support



FLAWLESS EXECUTION

CTG Power Systems International, Inc. provides the high measure of excellence on project & construction management required to bring each project from concept to completion. Our team has experience leading international power projects with responsibility including:

- Engineering
- Responsibility Matrix
- Procurement and Materials Management
- Project Schedule
- Construction Management
- Start-up and Commissioning
- Plant Operation and Training
- O&M Services





RENEWABLE ENERGY SOLUTIONS

RTC Power Systems International, Inc. (RTC-PSI)

RTC-PSI is a CTG Power Systems International company touching on many facets of the renewables sector. RTC-PSI provides an excellent solution set corresponding to the emerging need for the delivery of a wide diversity of renewable energy services in today's changing environmental landscape. We market and implement a very innovative and cost-effective renewable technologies program for most energy demands, together with energy efficiency strategies that provide our customers with long-term, progressive and sustainable solutions focused on biomass power.

- Cogeneration and CHP Facilities
- Existing Plant Upgrades
- Plants Utilizing Process Steam and Boiler Technologies
- Gasification Technologies
- Fuels including anaerobic digestion, rice hulls, chipped tires, MSW, bagasse



Meeting Global Power On Demand

CTG's subsidiary, [CTG Power Solutions LLC](#) specializes in customizing its mobile power rental solutions for a wide variety of emergency, utility backup, grid stabilization, renewable, industrial and commercial applications.

Our various power solutions are designed to be competitive, scalable and tailored to meet energy production deficiencies of any customer worldwide.

CTG offers rapid response turnkey rental options and competitive pricing utilizing GE's 35MW Aeroderivative TM2500+ 50/60Hz. Dual Fuel Mobile Gas Turbine Package as well as several other smaller GT options.

Whether you require immediate or more lasting power, our flexible solutions deliver dependable and efficient electrical power when, and where you need it, for as long as you need it.



Loading TM2500+ for Air Transport

POWER GENERATION EQUIPMENT SALES

The Camelot Technologies Group International, Inc.

- Since 1995, CTG-I has been a global leader in providing clients with a reliable and cost-effective supply of new, used and refurbished surplus power generation equipment.
- From small diesel generators and gas turbines to complete power plants, CTG-I provides utilities and independent power producers with cost-effective power generation solutions to meet the requirements of projects worldwide
- Over \$500MM USD purchased and sold by (CTG-I).
 - Diesel and Gas Reciprocating Engines
 - Liquid and Gas Fired Combustion Turbines
 - Biomass and Gasification Systems
 - Complete Power Plants





CTG-PSI PAST PROJECT EXPERIENCE

KEY PAST PERFORMANCE PROJECTS	286MW CGT BNYCP Facility US	240MW CGT Plant Venezuela	60MW CGT Plant Venezuela	50MW Diesel Plant Chile
International Experience	*	*	*	*
Mobilization/Demobilization	*	*	*	*
Assessing Power Needs	*	*	*	*
Providing Generator Equipment	*	*	*	*
Preparing Generator Sets	*	*	*	*
Hauling Generator Sets	*	*	*	*
Installing Generator Sets	*	*	*	*
Preventative Maintenance				*
Safety Plan	*	*	*	*
QC Plan	*	*	*	*
Program/Project/Construction Management	*	*	*	*

MAJOR EPC POWER PROJECT EXPERIENCE

60 Mw Simple Cycle Plant PDVSA, PiGAP, Venezuela



2 Pratt & Whitney Swiftpac 30 Gas Turbine Packages will generate power for this 60 Mw Simple Cycle Electrical generation facility being constructed in PiGAP, VZ for PDVSA. This project began in the spring of 2010 and is to be completed in 2011.

SCOPE OF SUPPLY

- Design
- Engineering
- OEM & BOP Equipment Supply
- Construction Support
- Operator Training
- Start-Up
- Commissioning

SCHEDULE

14 Months from NTP on OEM equipment procurement to commercial operation

6 Months from start of construction to commercial operation

17231 Camelot Court, Land O'Lakes, FL 34638
Tel: (813) 920-8725 / Fax: (813) 343-5754
Email: Info@Camelottech.com



240 Mw Simple Cycle Plant PDVSA, Puerto La Cruz, Venezuela



4 Rolls-Royce Trent 60 WLE Gas Turbines will generate power for this 240 Mw Simple Cycle Electrical generating facility being constructed in Puerto La Cruz, VZ for PDVSA. The project began in the spring of 2010 and is to be completed in 2011.

SCOPE OF SUPPLY

- Design
- Engineering
- OEM & BOP Equipment Supply
- Construction Support
- Operator Training
- Start-Up
- Commissioning

SCHEDULE

18 Months from NTP on OEM equipment procurement to commercial operation

8 Months from start of construction to commercial operation

17231 Camelot Court, Land O'Lakes, FL 34638
Tel: (813) 920-8725 / Fax: (813) 343-5754
Email: Info@Camelottech.com



50 Mw Emergency Diesel Generation Power Plants Grupo SAESA Multiple Sites in Chile SA



Quellon, Chile 10 MW

CTG PS received the award to supply (21) 2000 Kw Emergency Diesel Generator Sets for multiple sites in Chile SA for Grupo SAESA.

SCOPE OF SUPPLY

- Site Engineering
- Procurement
- Logistics and Transportation
- Installation
- Training
- Start-up and Commissioning

SCHEDULE

Typical site was completed in 3 months from NTP to commercial operation

17231 Camelot Court, Land O'Lakes, FL 34638
Tel: (813) 920-8725 / Fax: (813) 343-5754
Email: Info@Camelottech.com





CTG PROJECT EXPERIENCE

RENEWABLE PROJECT EXPERIENCE RTC Power Systems, LLC

RTC Engineers have amassed a great deal of technical experience providing design and construction support for many conventional and renewable energy projects.

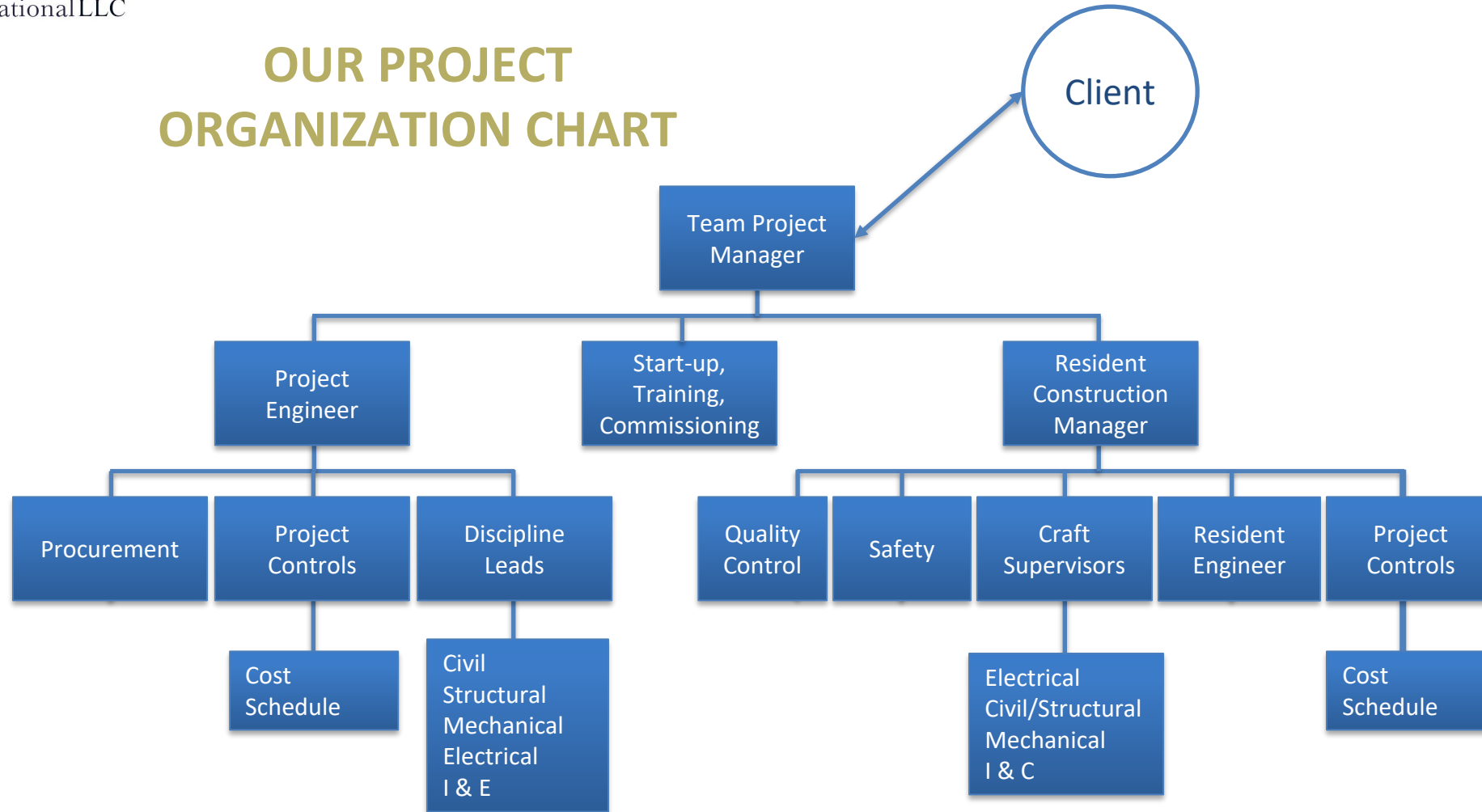
RTC has the ability to determine the best-fit technology for optimizing the use of the client's feedstock or bio-fuel. Whether it is for power generation or production of salable products, RTC will provide the safest and most economical facility solution for the client.

- MSW and Biomass Facilities
- Tire Pyrolysis Facilities
- Digester Gas and Low-Btu Fuel Applications
- Gasification Applications



CTG PROJECT EXECUTION Overview

OUR PROJECT ORGANIZATION CHART





Why Choose Our Team?

The CTG team combines real world experience with engineering, procurement, project & construction management and equipment manufacturing experience which enables us to provide seamless project execution and client interface. It's all about trust, commitment and partnership. A better way to do business.

The CTG Advantage

- Through our experience, knowledge and multi-disciplinary team, let us show you how we can provide provide the most comprehensive, cost effective and qualified project services available for any size project with a focus on:
 - Land based (permanent) and Mobile Power Generation (temporary) Equipment
 - Engineering and Detailed Design
 - Field and Site Services and Construction
 - Start-up and Commissioning
 - Plant Operation and Maintenance services
- Attention to detail (“getting it right the first time”)
- The right size partner – customer focus
- Design and construction experience
- Global reach with local response

STEPS TO SUCCESS

- ✓ Identify Project Goals & Objectives
- ✓ Conduct or Review Feasibility Study
- ✓ Formalize and Confirm Proposal
- ✓ Devise Division of Responsibilities
- ✓ Devise Acceptable Project Schedule
- ✓ Execute Master Services Agreement
- ✓ Project Award & Commencement



CTG Power Systems International - Previous Customers (Equipment & Services)



THE CHUGOKU ELECTRIC POWER CO., INC.



Rolls-Royce



Saranac Power Partners L.P.



Banknorth





Power.... Where and When Its Needed Most



*Whether You Need Permanent or Temporary Power Generation
Let CTG Exceed Your Expectations*

Call: (813) 920-3500 or Email: Info@CTGPowerSystems.com

