

# LG Lyon LITE Series

Recessed Luminaire  
Aluminium  
Stainless Steel

Low / Standard / High Power  
Monochrome / RGB / RGB-W/WW

- 3 years unlimited warranty



by LLDS Lighting

# LG LYON LITE LINEAR LIGHTING

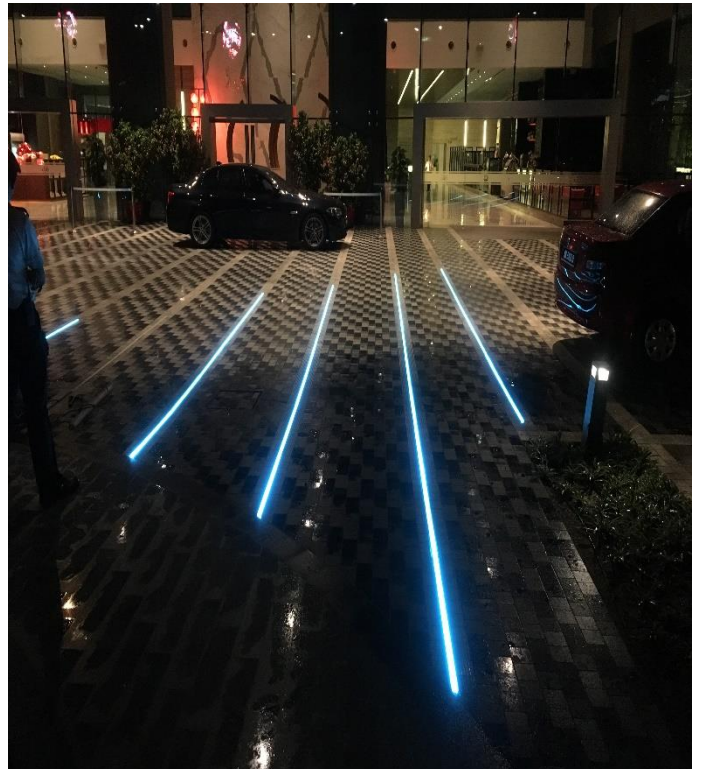
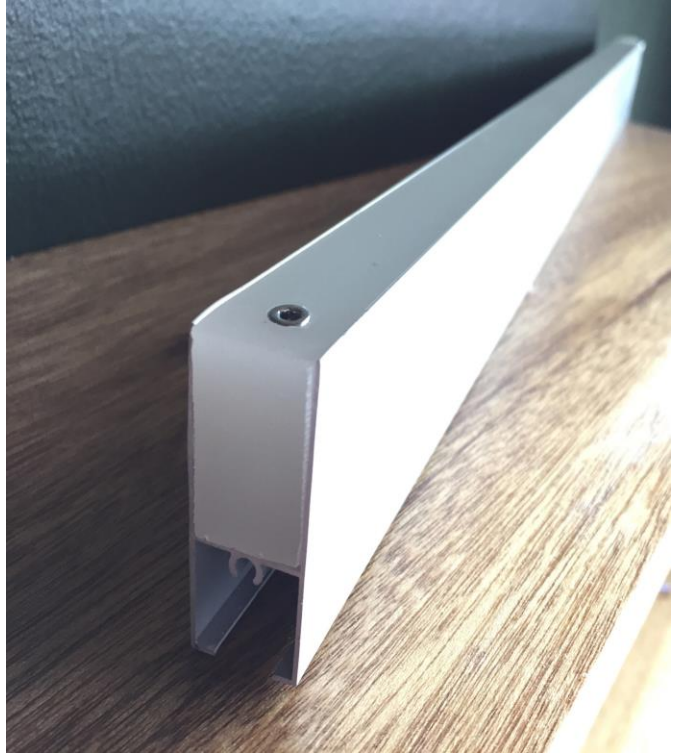
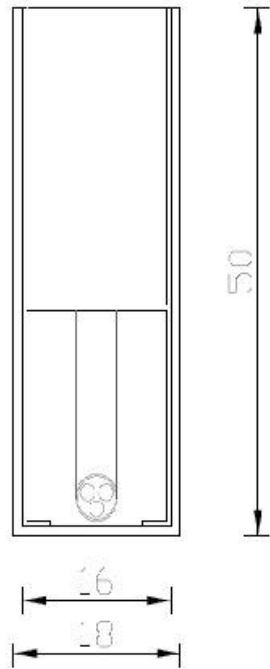
Recessed Luminaire | Stainless Steel

Standard/High-power/Monochrome/RGB/RGB-W/WW

1 of 3

# lids™

PICTURES



# LG LYON LITE LINEAR LIGHTING

Recessed Luminaire | Stainless Steel

Standard/High-power/Monochrome/RGB/RGB-W/WW

1 of 3

lids™

BASE INFORMATION AND  
GENERAL TECHNICAL SPECIFICATIONS



## LG Lyon LITE Linear | In-ground + Facade

LG Lyon LITE Series when darkness falls, shows the way. Application at entrance areas or emphasize architectural contours. LG series can be integrated in façades and floor spaces – they are always an optical highlight.

### Features

- For public spaces, façades, entrance areas, water features
- Straight or curved versions
- Safe to walk or drive in for vehicles with air-filled tires
- Implementation in variable applications from user-friendly small applications to building automatism systems
- Perfect homogeneous lighting
- Light colors monochrome, optional standard: multicolor as well as RGB and RGB+W/WW
- Suitable for wet areas; pools, water features

### DIMENSIONS [W X H]

22 mm (W) x 25 mm (H) | Rectangular profile

### POWER CONSUMPTION

STANDARD:  
8 W/m up to 28.8W/m | 14.4 W/m [RGB]  
HIGH-POWER:  
38 W/ m

### LUMINOUS FLUX

STANDARD:  
Module efficiency 75 lm/W  
Luminous flux 950 lm  
Nominal luminous flux 1,280 lm  
HIGH-POWER:  
Module efficiency 100 lm/W  
Luminous flux 1,160 lm  
Nominal luminous flux 3,320 lm

### SERVICE LIFE

LED 50.000 hours at 70% of mean luminous flux

### COLOUR TEMPERATURE

STANDARD:  
Monochrome |  
2,700/3,000/3,500/4,000/6,000 Kelvin  
optional RGB and RGB+W/WW  
HIGH-POWER:  
Monochrome |  
3,000/3,500/4,000/6,000 Kelvin  
optional RGB and RGB+W/WW

### CRI

CRI > 85

### CONTROL INTERFACE

Compatible to any interface as i.e. DMX 512, DALI, EIB etc.

### IP RATING

IP68

### LED BRANDS

OSRAM / EPISTAR

### LUMINAIRE HOUSING

316 grade Stainless Steel / Aluminum anodized

### MATERIAL

High-quality, UV rated opaque polyurethane/resin

### OTHER

Ambient temperature -25 °C up to +60 °C  
Connection cable with plug connection IP67 suitable for mounting in the ground, mounting profile made of aluminum or stainless steel

### WEIGHT

0.85 kg/m

# LG LYON LITE LINEAR LIGHTING

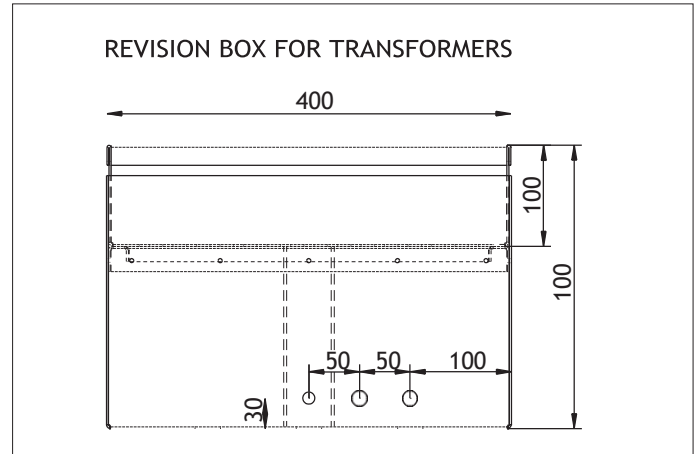
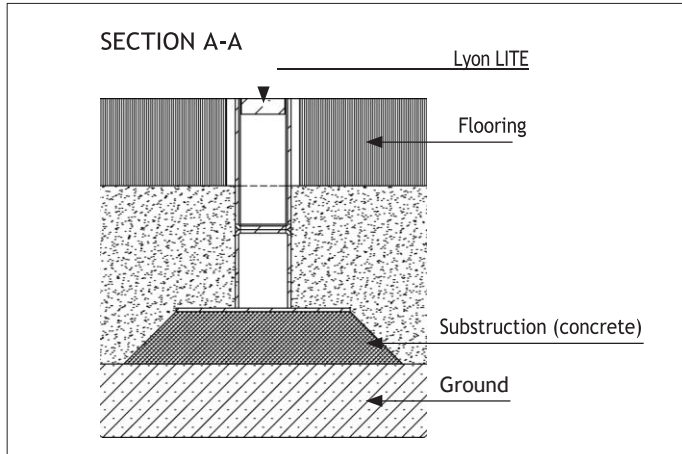
Recessed Luminaire | Stainless Steel

Standard/High-power/Monochrome/RGB/RGB-W/WW

1 of 1



TECHNICAL DRAWINGS





# LG LYON LITE LINEAR LIGHTING

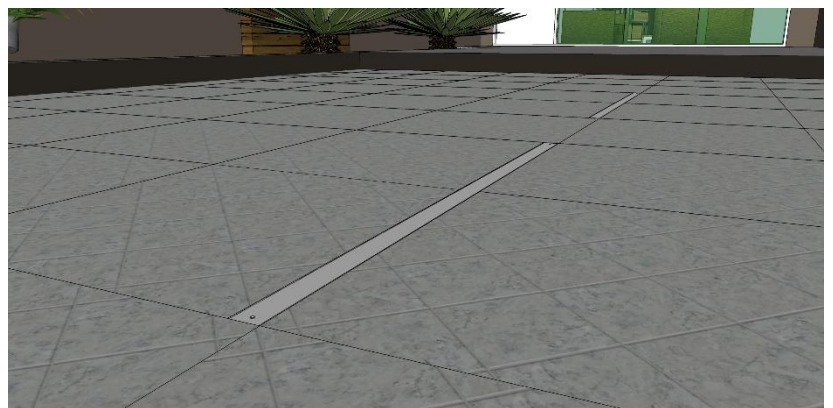
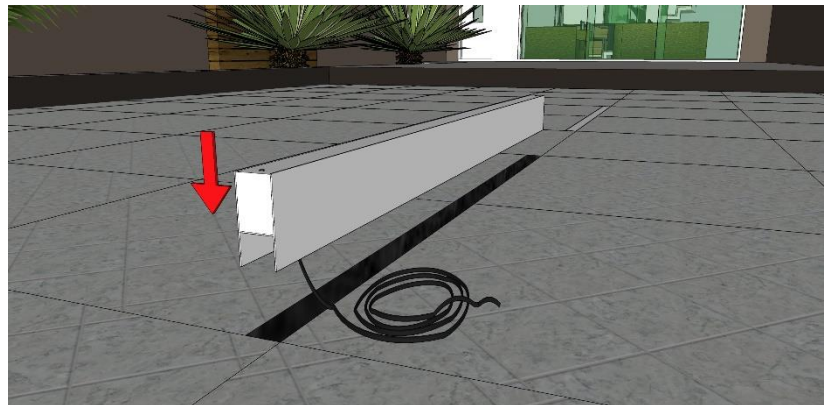
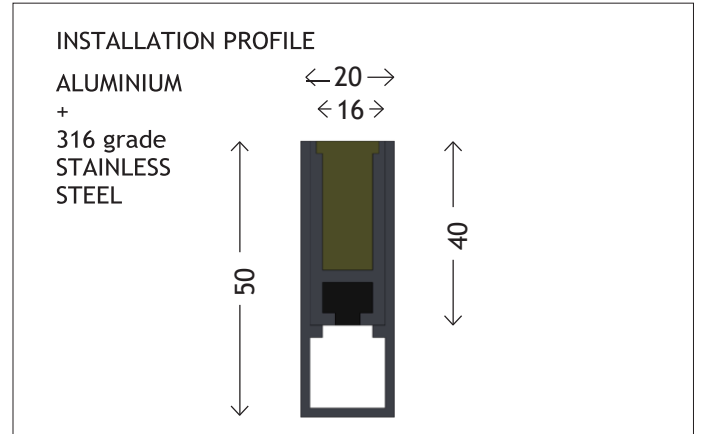
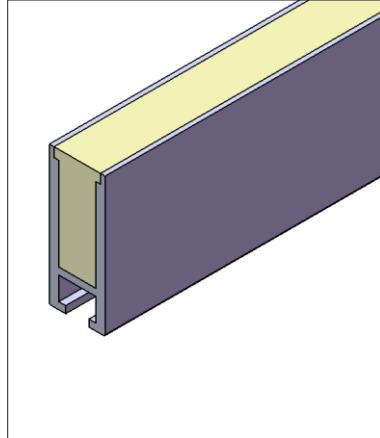
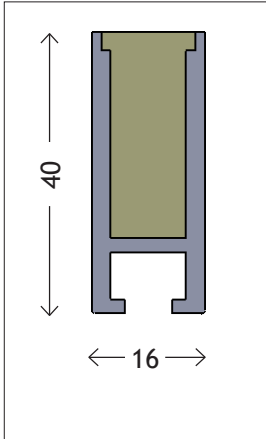
Recessed Luminaire | Stainless Steel

Standard/High-power/Monochrome/RGB/RGB-W/WW

1 of 1



TECHNICAL DRAWINGS | SUB-CONSTRUCTIONS





LLDS Lighting Design Systems  
No. 172-G & 172-1, Jalan LP  
7/4, Taman Lestari Perdana,  
Bandar Putra Permai, 43300,  
Seri Kembangan, Selangor /  
Malaysia  
T +60 17 653 7329  
[lldsighting@gmail.com](mailto:lldsighting@gmail.com)  
[www.lldsighting.com](http://www.lldsighting.com)

by LLDS Lighting Design Systems