

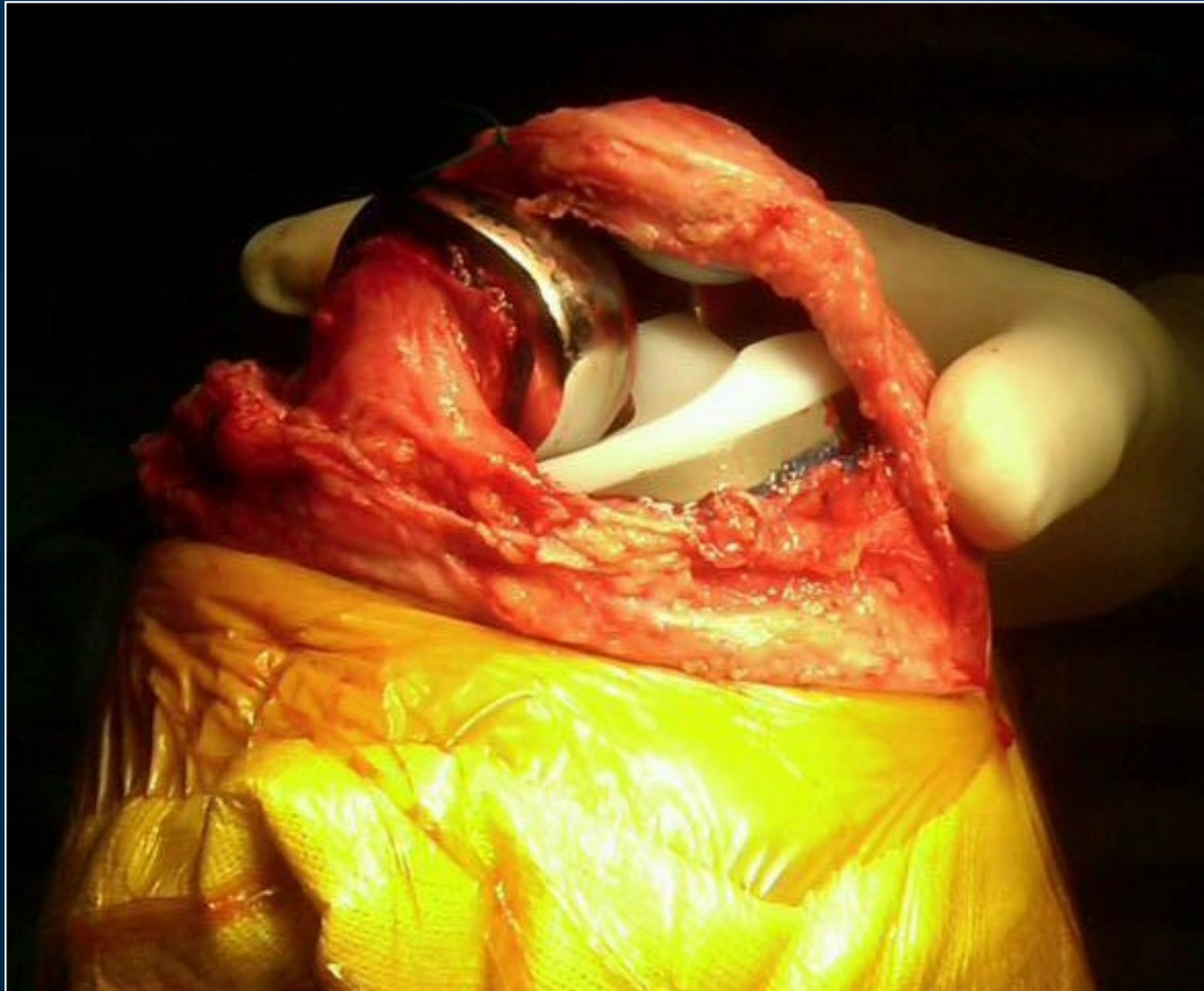
		Femoral Component Size							
		A	B	C	D	E	F	G	H
Tibial Tray Size	A1	■							
	B2		■						
	C2			■					
	C3			■					
	D2				■				
	D3				■				
	D4				■				
	E4					■			
	E5					■			
	F5						■		
G7							■		
	1	■	■	■	■				1/2
	2	■	■	■	■	■	■		3/4
	3			■	■	■	■	■	5/6
	4			■	■	■	■	■	7/8
	5				■	■	■	■	
	6					■	■	■	
	7						■	■	
	8							■	



Advanced size and fit options to support global patient population



Designed to reproduce natural knee kinematics, deep flexion and rotation required for high flexion activities.



*Delivers high flexion while conserving bone*

