

DuraPost®

BY BIRKDALE

P R O F E S S I O N A L

DOING FENCING DIFFERENTLY

durapost.co.uk

GUARANTEED
UP TO

25
YEARS



A FENCING SYSTEM WITH STAYING POWER

Time and space have always been important to us. It's one of the reasons we first created DuraPost. Fed up of working with cumbersome or rotting fence posts that quickly needed replacing, our team of engineers and designers decided to find a more efficient and long lasting solution.

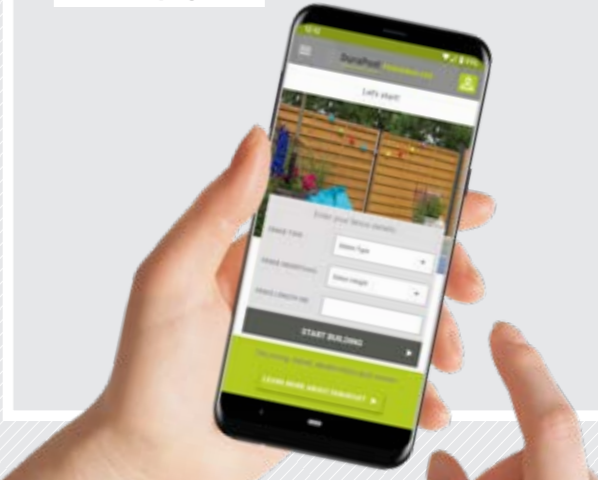
The result? DuraPost By Birkdale. An innovative, versatile fence post system that's easy to fit and built to last.

Manufactured from cold rolled galvanised steel, DuraPost's unique and patented 'H'-shaped design makes it strong, yet easy to work with and transport.

Whether you're looking to provide a modern and durable solution for a customer or complement the architecture of a development, know that with DuraPost you've chosen a system with stamina.

PLAN YOUR PROJECTS
THE EASY WAY WITH THE
NEW DURAPOST APP

Turn to page 19



CONTENTS

The DuraPost fencing system	4
Meet the DuraPost range	6
New Products	8
Aluminium Gate	8
Composite fence panels	9
Commercial DuraPost	10
DuraPost Z-Board	11
Case study - Contractor	12
Case study - Property Developer	16
DuraPost vs Concrete vs Timber	20
Case study - Property Developer	24
The perfect match	28
Case study - Extreme Conditions	30
Easy fitting guide	34
Ideas and inspiration	35

DURAPOST

GALVANISED STEEL FENCE POSTS LIGHTER, STRONGER AND EASIER TO FIT

The one that started it all. The classic profile DuraPost is a surprisingly lightweight bit of kit, designed to be carried and fitted by one person. Its unique, 'H'-shaped design allows virtually any type of panel or board to be attached to it. Once installed, it can withstand winds of up to 110mph*.

AVAILABLE COLOURS



THE BENEFITS

Peace of mind is guaranteed with DuraPost. Our maintenance free fencing is light, secure and easy to install, even on the most challenging sites. Made in the UK, it is the sustainable and flexible solution that will exceed the expectations of any customer.



UNIVERSAL APPEAL

To suit the tastes of a customer or the architecture of a larger development, DuraPost comes in four colourways and is compatible with virtually any type of fence panels or board.



SAVES TIME

DuraPost is a hassle-free solution. Each one is 80% lighter than concrete and can take up to half the time to fit compared with traditional fence posts. They also need no maintenance. Simply fit and forget about it.



IMPROVED SECURITY

Unlike concrete posts, DuraPost's pre-drilled holes allow fence panels to be fixed securely, providing peace of mind to you onsite and long term for the end user.



QUALITY, GUARANTEED

DuraPost is made in the UK from galvanised steel. It's designed to face the worst weather without warping or cracking and is guaranteed for up to 25 years.**



SUSTAINABILITY

Look no further than DuraPost to meet the modern customer's demands for sustainability as well as style. Made of 50% recycled steel in the UK using a low energy manufacturing process, DuraPost posts are 100% recyclable at the end of their long life. Lightweight and easy to transport, emissions and transport efforts are cut significantly.

MEET THE DURAPOST RANGE

All durable, maintenance free and easy to install

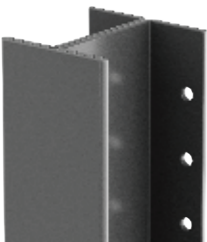
Enhance your project with flexible accessories and colour options

Easy to transport and handle, even on the most challenging sites

FINISHES

* NOT AVAILABLE IN GALVANISED

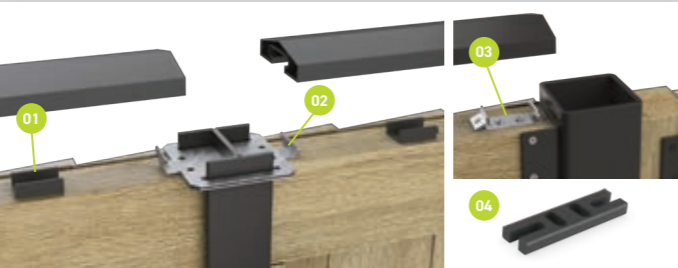
ANTHRACITE GREY	OLIVE GREY	SEPIA BROWN	GALVANISED STEEL
-----------------	------------	-------------	------------------



CLASSIC DURAPOST

Made from cold-rolled galvanised steel. Our Classic DuraPost can be used for virtually any type of fencing and can withstand wind speeds of up to 110mph. Available in four colours.

LENGTHS: 1.8m | 2.4m | 2.7m | 3m



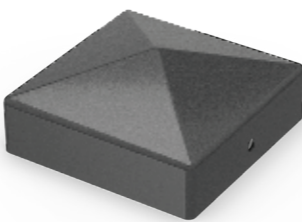
CAPPING RAIL*

An aluminium rail to protect the top of your fence from the weather. Available in three colours.

LENGTHS 1.83m | 2.45m | 3m

Accessories

- 01 Capping Rail Clip (Black)
- 02 Capping Rail In-line Bracket
- 03 Capping Rail Clip (BZP)
- 04 Capping Rail Packer



POST CAPS

Made from galvanised steel to give your posts a quality finish. Available in four colours.

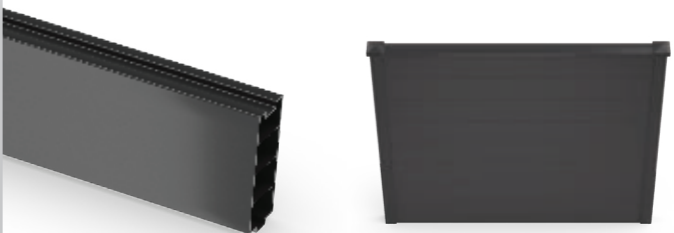
DIMENSIONS: 75mm x 75mm
Brackets included



U-CHANNEL

For use as a wall plate or adapter for corner posts. Available in four colours.

LENGTHS: 1.8m | 2.1m | 3m



GRAVEL BOARD* | Stacked Configuration

A composite gravel board that protects the base of the fence from the ground. Available in three colours.

LENGTHS: 1.83m | 2.44m | 3m

Easily stack gravel boards on top of each other to achieve a composite fence. Reinforce bar is recommended in the top, middle and bottom gravel board for strength.



COVER STRIPS*

Designed to improve the aesthetics on the fixing side of the post and can be added on afterwards to any DuraPost project.

LENGTHS: 2.1m
U-Channel Cover Strip also available



GATE POST

For use when hanging gates, creating 90° corners or to end a run of fencing. Available in four colours.

LENGTHS: 1.8m | 2.4m | 3m



Z-BOARDS*

Our cutting-edge gravel board, designed specifically to work with the DuraPost fence post. Created with Glass Fibre Reinforced Plastic (GFRP) Available in four colours.

LENGTHS: 1.83m | 2.4m | 3m



BOLT DOWN

For use when fixing DuraPost to solid surfaces where digging a hole is not possible.

DIMENSIONS: 150mm x 80mm

NEW PRODUCTS

DURAPOST ALUMINIUM GATE KIT

MAKE AN ENTRANCE

AVAILABLE
EARLY
2022

Every project is different, which is why we've designed a gate to adjust to any outside space. The DuraPost Aluminium Gate Kit combines privacy and security with flexibility. The versatile design enables you to change the height and width at the fitting stage – there's no need to go back and forth measuring up beforehand. You can also customise the aperture with your choice of panel. Simply attach to a DuraPost gate post or a timber one and you're good to go.

WHAT'S INCLUDED:

- ✓ Powder-coated frame in Anthracite Grey, Olive Grey or Sepia Brown
- ✓ Gate slam
- ✓ Secure lock
- ✓ Hinges and fixings

FULLY
ADJUSTABLE

Put your own wood panelling in here or create one in using DuraPost Composite Gravel Boards.

COLOURS



DURAPOST COMPOSITE PANELS

FUSS-FREE FENCING

AVAILABLE
EARLY
2022

After the success of the Classic DuraPost, we wanted to focus on creating a fence panel that also lasts longer than timber. Our new Composite Panels are made from 60-70% recycled material. It's a highly durable wood/plastic composite that's been UV tested, so it looks smart with zero maintenance year after year.

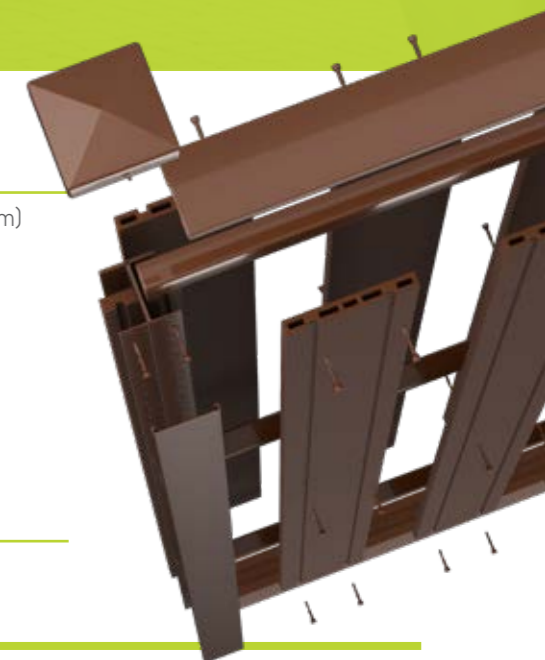
WHAT TO EXPECT:

- ✓ 100% maintenance free: fit and forget about it
- ✓ Three colourways: Anthracite Grey, Olive Grey and Sepia Brown
- ✓ No pre-drilling needed: self-drilling screws supplied as standard
- ✓ UV tested to ensure a longer lifespan compared to wooden.
- ✓ Make closeboard, hit & miss or picket style fencing

DIMENSIONS

6'x6' (1830mm x 1830mm)

COLOURS





Z-BOARDS
CAN BE STACKED
TO CREATE A
STUNNING
CONTEMPORARY
FENCE

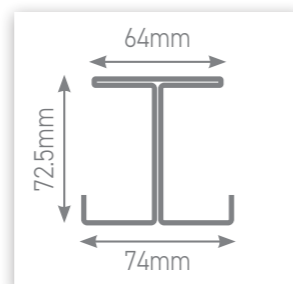
COMMERCIAL DURAPOST

TALLER AND STRONGER THAN THE CLASSIC

Ideal for developments and large-scale fencing requirements, our new Commercial DuraPost is made from 2.5mm galvanised steel designed for taller fencing solutions up to 4m above ground. It's available in a range of lengths, so you can use it for carports, acoustic fencing projects and lots more.

THE DETAILS:

- ✓ Available in 2.4m, 3m, 3.4m, 4m and 5m lengths
- ✓ Static load tested up to 1100kg
- ✓ Choose from three colourways: Anthracite Grey, Olive Grey and Sepia Brown



COLOURS



DURAPOST Z-BOARDS

CUTTING EDGE GRAVEL BOARDING

We've designed the Z-Board to work alongside the DuraPost fence post, to create a high quality and attractive solution to the traditional gravel board. Made from Glass Fibre Reinforced Plastic, it's lighter than concrete and timber alternatives yet still provides exceptional strength. Both easy to work with and element resistant, our Z-Board is the perfect pairing to DuraPost panels and posts.

WHAT TO EXPECT:

- ✓ Strong, lightweight and rustproof
- ✓ UV resistance tested to 500 hours with no sign of weathering or weakening
- ✓ Available in three colour finishes: Anthracite Grey, Olive Grey and Sepia Brown
- ✓ The 150mm Z-Board comes in a choice of 1.83m, 2.4m and 3.0m lengths

DIMENSIONS

Double: 300mm h x 50mm d
Single: 150mm h x 50mm d
Available Lengths:
1.83m 2.4m 3m

COLOURS



CONTRACTOR
CASE STUDY:

SD FENCING
(MAIDENHEAD)

After 20 years in the business, when it comes to fencing, it's all about variety and choice for DuraPost Trained Installer Steven Davies.

"We install all types of fencing and gates," he explains. And, being a Trained Installer, that includes the DuraPost Fencing System on many an occasion. "I've used most of the products [from the range] on numerous projects," Steve confirms.

"I've had only good comments from customers. I'd definitely use more of the DuraPost products."

Compared to conventional fencing supplies, DuraPost offers something a bit different, as Steve tells us: "I like using them because they are light and easy to install. They look good too."

One of the benefits of his many years of industry experience is that clients and homeowners often look to him for recommendations at the planning stage of a project. "I tell all customers about DuraPost when they're deciding what posts and supplies to use," Steve explains.

What's more, feedback from homeowners couldn't be better. "I've had only good comments from customers. I'd definitely use more of the DuraPost products."



Name: Steven Davies
Company name: SD Fencing
Location: Maidenhead
Website: sdfencingcontractor.com

Steven says:
"I'm in my 50s and have been a fencer for 20-odd years. I employ one other fencer and a labourer/trainee on a full-time basis."

See more of Steven and his team's latest fencing projects over on Instagram [@sdfencingofmaidenhead](https://www.instagram.com/sdfencingofmaidenhead)

PROJECT FOCUS

A CLOSER LOOK AT STEVE AND HIS TEAM'S RECENT FENCING WORK



01

SLEEK COMPOSITE GRAVEL BOARD FENCE

THIS CONTEMPORARY SCREEN SOLUTION PROVIDES BOTH PRIVACY AND STYLE

"I installed this fence using the DuraPost System in Anthracite Grey. It's made up using the Composite Gravel Boards on top of each other to give it the 'screen' look."



02

WINNING 'HIT AND MISS' FENCING SOLUTION

A SMART AND SOCIABLE BOUNDARY LINE FOR A DRIVEWAY

"Here we wanted to complement the newly installed block paving, so we opted for the Classic DuraPost, Composite Gravel Boards and Post Caps in Anthracite with 'Hit and Miss' style wooden fence panels."

03

GREAT, MODERN-LOOKING GARDEN BOUNDARY

TIME FOR SOMETHING A BIT DIFFERENT

"Here we used the Classic DuraPost and Composite Gravel Boards with the Post Caps – all in Anthracite. The colour works really well with the double-slatted wooden fence panels. The client was definitely impressed with the DuraPost system on this job."

PROPERTY DEVELOPER
CASE STUDY:

HAMBLE LUXURY PROPERTIES
(HAMBLE-LE-RICE, HAMPSHIRE)



Birkdale supplied its innovative DuraPost fence post system for a series of up-market new-build properties located alongside the scenic Hamble River. Specified for its modern style and durability, the powder coated galvanised steel solution also helped to overcome a series of specific onsite challenges due to its light weight.

SPECIFIED PRODUCTS

Property developer Kevin Smith at K & J Contracts Ltd, based in the picturesque Hampshire village of Hamble-le-Rice, needed a high-quality fencing solution to apply the finishing touch to the construction of four new premium residential homes. While visiting his local Strutka Group builders' merchants, Kevin was impressed by a display of DuraPost fencing products installed on site by contractors Silvervale Ltd.

Following a discussion with Silvervale, Kevin specified DuraPost gravel boards for use between the brick piers in the front gardens of the four new homes, and he chose intermediate DuraPost fence posts for the rear gardens, to be used together with prefabricated fence panels. DuraPost fence post caps and capping rails were also specified, with all of the products in RAL 7016 Anthracite Grey to complement the windows, doors and gates of each property. The systems were supplied and installed by Silvervale, which is one of Birkdale's Elite Stockists and trained installers.

“If you are looking for a fencing solution that offers a unique and modern appearance, DuraPost is ideal.”

OVERCOMING ONSITE CHALLENGES

However, there were a number of onsite challenges, which Silvervale had to overcome during installation. The properties are located on a narrow residential road, so access to the site proved to be an issue. Likewise, the early stages of the project took place in adverse weather conditions, resulting in a potential injury risk from slipping in the excavated mud.

Fortunately, the light weight of DuraPosts meant that the Silvervale team could easily and safely transport the specified

products in fewer trips, enabling them to get everything onsite quickly and to get on with the installation, irrespective of the weather.

STYLISH, VERSATILE AND DESIGNED TO LAST

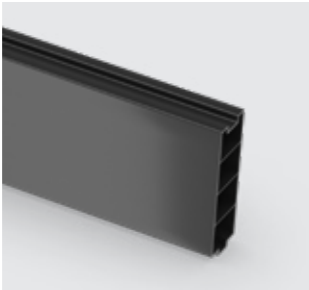
"DuraPost is an excellent, stylish and versatile fence post solution," commented Murray Moggach, Managing Director at Silvervale. "Not only is it easy to install, but its durable qualities also give you peace of mind that you are installing fence posts that have been designed to last."

The four-property development is now complete and the homes are all sold. Property developer Kevin concluded: "If you are looking for a fencing solution that offers a unique and modern appearance, DuraPost is ideal. I'm delighted with the finished fencing and how it perfectly complements the properties' overall design."

GET THE LOOK



Anthracite Grey Classic DuraPost



Anthracite Grey Gravel Board



Anthracite Grey Post Cap



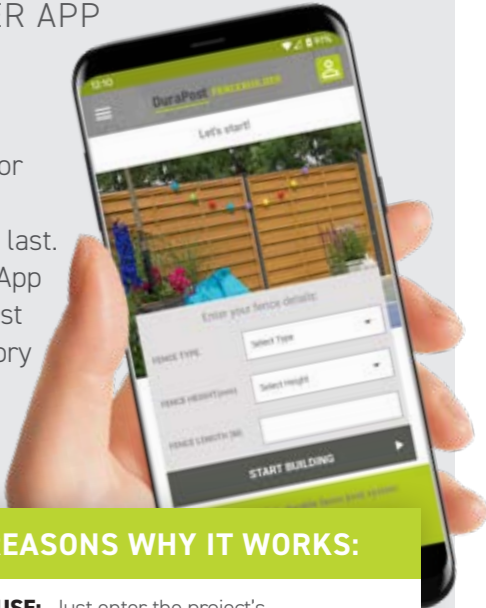
Anthracite Grey Cover Strips



DESIGN IT YOURSELF

SEE YOUR IDEAS COME TO LIFE IN DURAPOST'S NEW AND IMPROVED FENCEBUILDER APP

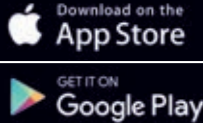
DuraPost is the complete system for fences. It's stylish, strong and built to last. The FenceBuilder App puts every DuraPost option and accessory at your fingertips.



HERE'S 5 REASONS WHY IT WORKS:

- 01 EASY TO USE:** Just enter the project's measurements to get started.
- 02 SEE YOUR DESIGNS:** Visualise plans and projects using your smartphone or tablet.
- 03 MAKE CHANGES:** See the design at every stage and tweak it if you need to.
- 04 EVERYTHING YOU NEED:** Finalised your design? The FenceBuilder App generates a full build list.
- 05 SEARCH AND FIND:** Local stockists or DuraPost Trained Installers in your area.

AVAILABLE
ON APPLE
& ANDROID
DEVICES



DURAPOST vs CONCRETE vs TIMBER

DuraPost By Birkdale is the versatile fence post solution that combines the long-lasting strength of concrete with the light weight and attractive aesthetic qualities of timber. Here, we compare each of those three options and look at the pros and cons of using each.

Materials

CONCRETE

- + Strong
- + Long lasting
- Heavy to carry
- Requires two people to install
- Cracks and breaks
- Not secure (panels can be lifted out easily)



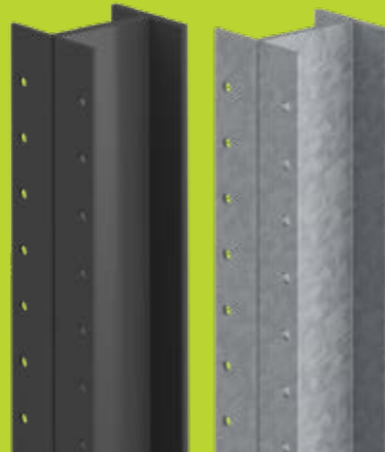
TIMBER

- + Low cost
- + Lightweight
- + Can be installed by one person
- Strength reduces over 5-8 years
- Warps and crack
- Need to be replaced frequently
- Needs ongoing maintenance



DURAPOST (GALVANISED STEEL)

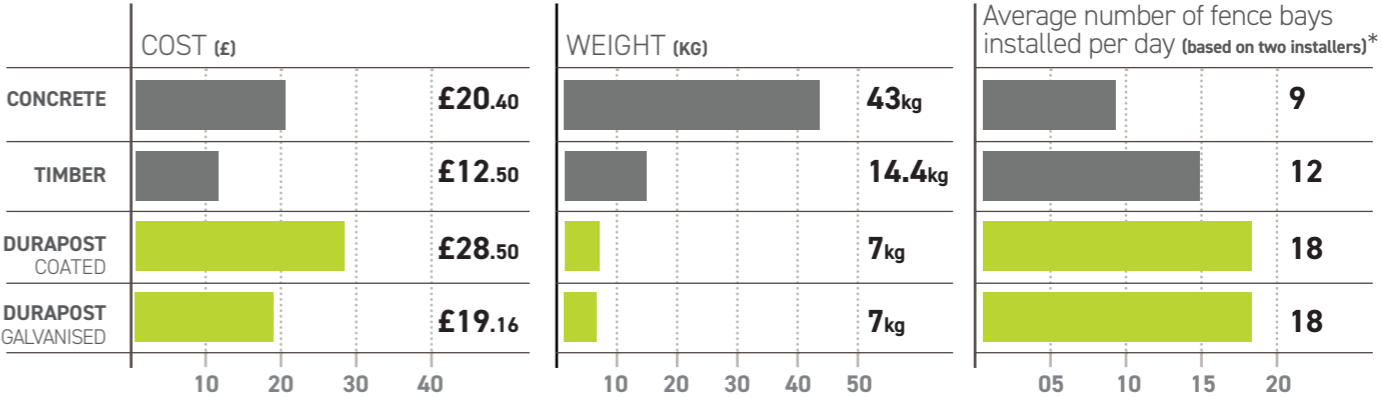
- + Strong
- + Lightweight
- + Easily installed by one person
- + Long lasting
- + Easy to store/transport
- + Available in 4 finishes
- Perceived to be more expensive



Post Comparison

Examples based on Retail Pricing - **talk to us for a quote for your project**

DuraPost is comparative in price to concrete and although more expensive than some timber fence posts, in most cases the time saved on installation brings projects in cheaper. (See the next page)



Load Comparison 9x Posts

The lightweight Duraposts can be carried three at a time compared with concrete posts that require two people to carry just one. The benefits of DuraPost are obvious even before you set foot on site.

DuraPost is ideal for stacking
DuraPost's unique shape ensures that it takes up the least possible space



CONCRETE	TIMBER	DURAPOST (COATED)	DURAPOST (GALVANISED)
DIMENSIONS (MM)	DIMENSIONS (MM)	DIMENSIONS (MM)	DIMENSIONS (MM)
545x188x2400	500x200x2400	324x56x2400	324x56x2400
WEIGHT (KG)	WEIGHT (KG)	WEIGHT (KG)	WEIGHT (KG)
387	144	63	63

And thats not all - other benefits of DuraPost include:

RECYCLABILITY
100% recyclable at end of life

SAVE FUEL
Fewer trips and lighter loads

LESS CONCRETE
Less post concrete per post

LESS LABOUR
Less digging/earth removal

*Results based on independent testing and direct feedback from Fencing Contractors

Project Example

The following project example is based on a real-life housing development using Retail Pricing for all material costs as of October 2021.

It is a 45 home development (totaling 678 fence bays) showcasing the time and cost savings when specifying DuraPost vs Timber and Concrete posts.

PROPERTIES 45
FENCE POSTS 678



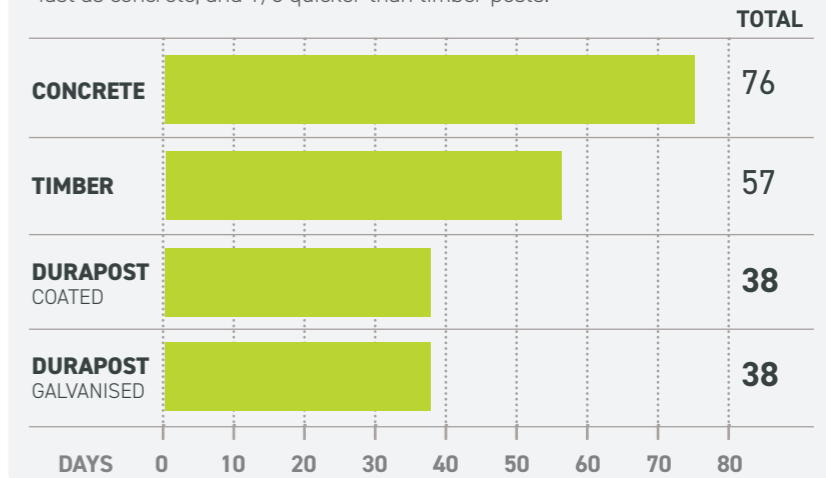
Weight handled

Concrete - 64,410
Timber - 27,120
DuraPost Galvanised - 21,764
DuraPost Coated - 20,679



Installation time on site

DuraPost lets you shave weeks off of a project due to it's lightweight form leading to easier handling. Figures are based on DuraPost being installed twice as fast as concrete, and 1/3 quicker than timber posts.



Project costs

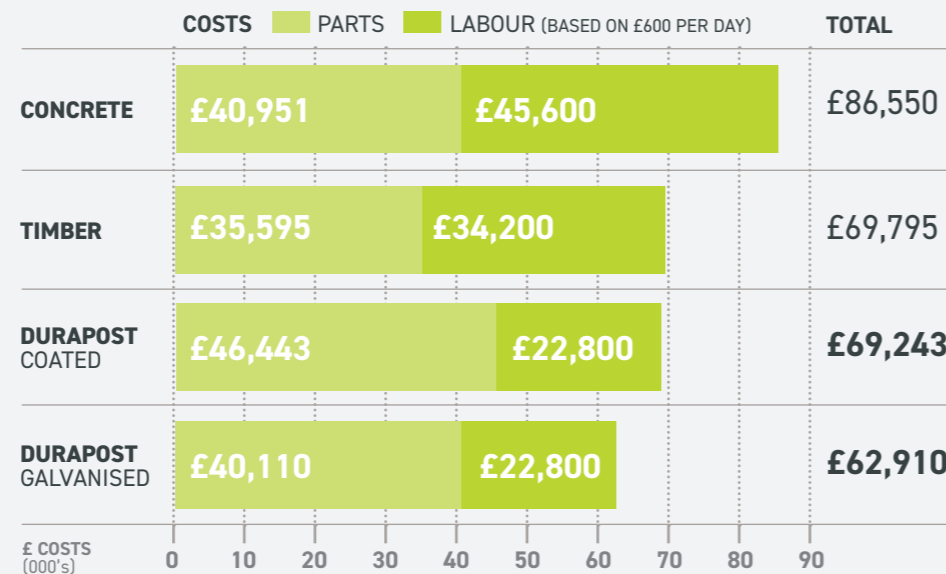
Project costs are based on the Retail Pricing for fencing in 45 homes:

PARTS

Timber fence panels (industry average)
Post concrete (industry average)
Fence posts (as per prior page)

LABOUR

Based on £600 per day (2 contractors)
With labour pricing based on DuraPost being installed twice as fast as concrete, and 1/3 quicker than timber posts.



DuraPost savings

VS CONCRETE (£86,550)

SAVINGS

DURAPOST GALVANISED (£62,910)

£23,640

DURAPOST COATED (£69,243)

£12,257

VS TIMBER (£69,795)

SAVINGS

DURAPOST GALVANISED (£62,910)

£6,884

DURAPOST COATED (£69,243)

£552

£ SAVINGS (000's)



PROPERTY DEVELOPER CASE STUDY:

PAR HOMES

(BRECON, POWYS)

PAR Homes specified DuraPost fence posts for its new Beacons Gate development in Brecon, Wales. The housebuilder had initially planned to install concrete fence posts, but when the team discovered DuraPost they realised there was a product on the market that would significantly improve the speed of installation, while maintaining its durability.

HARSH CONDITIONS

Brecon is located in a region of Wales that is known for strong winds and harsh conditions, so PAR Homes were well aware that their new property development needed to include a durable fencing solution. Concrete fence posts seemed to be the obvious answer, but while concrete is the most resistant fence post material, it is not aesthetically pleasing. Timber is popular due to its appearance but it can't offer a long-term, weatherproof solution.

“We wanted to find a replacement that would allow us to be more efficient, whilst not having to compromise on performance and durability”

PAR Homes initially decided to go with concrete. However, early on in the project, it became clear that the concrete posts were slowing down the developers' progress.

“An employee could only carry one post at a time, and the posts themselves required a considerable amount of preparation prior to installation,” said Neil Lloyd, Contract Manager at PAR Homes. “We wanted to find a replacement that would allow us to be more efficient, whilst not having to compromise on performance and durability.”





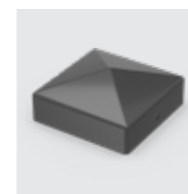
“We could each carry three of the steel fence posts at a time, which drastically improved our productivity, allowing us to install twice the amount of DuraPosts as concrete posts in the same space of time.”



GET THE LOOK



Anthracite Grey
Classic DuraPost



Anthracite Grey
Post Cap



Anthracite Grey
Gate Post



Anthracite Grey
Gravel Board

After some research, Neil discovered DuraPost By Birkdale and the PAR Homes team visited Caerfagu Products, their local building supplier, where they acquired a small sample of DuraPost fence posts to trial on one of the properties at Beacons Gate. This was an overwhelming success.

Neil continued: “We could each carry three of the steel fence posts at a time, which drastically improved our productivity, allowing us to install twice as many DuraPosts as concrete posts in the same period of time.”

LIGHTWEIGHT BUT STRONG

Manufactured from galvanised steel, DuraPost offers a solution that is 80% lighter than concrete but no less resistant to harsh weather. The steel is cut and rolled through a specially made die to create a unique, patented H-section profile. This ensures that it is not only lightweight but also incredibly strong, delivering maximum durability. DuraPost has been tested by the Building Research Establishment Ltd (BRE), so it is proven to withstand winds of up to 110mph.

PROBLEM SOLVED

Having met all of the installation and performance requirements, PAR Homes decided to go forward with the DuraPost system throughout the Beacons Gate site, for the front and back gardens of all 119 properties.

“It will be a good-looking site when finished,” commented Neil. “With many of the Beacons Gate properties’ fascias and windows in Anthracite Grey, the fact we could specify DuraPosts to match really helps to bring everything together. I would highly recommend the product to other developers.”

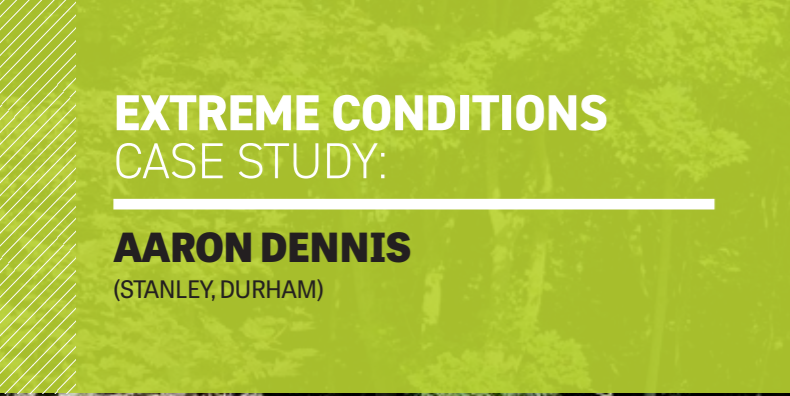
THE PERFECT MATCH

AS WELL AS OFFERING A HIGH QUALITY FENCING SOLUTION, DURAPOST IS DESIGNED TO COMPLEMENT THE ARCHITECTURE OF YOUR HOME. AVAILABLE IN SEVERAL COLOURWAYS, DURAPOST MERGES YOUR HOME AND GARDEN TOGETHER SEAMLESSLY.



EXTREME CONDITIONS
CASE STUDY:

AARON DENNIS
(STANLEY, DURHAM)



Recently, fencing expert Birkdale was contacted to supply its new Commercial DuraPost to a residential fencing project in Stanley, Durham. With his previous timber fencing system proving ineffective against strong winds, homeowner Ian Young sought an alternative that would provide a long-term and aesthetically pleasing solution to his fencing needs.

NORTHERN EXPOSURE

Located in the North East of England, properties in Stanley are regularly subjected to strong winds and heavy rainfall. As such, when it comes to installing fencing in such an area, it is crucial to specify a system with maximum strength and durability.

Being situated on the corner of a housing estate, Ian Young's 30m garden fencing line is particularly exposed to the rampant winds of County Durham. Over the past 14 years, Ian has tried a number of fencing solutions but each succumbed to extreme weather or rot. Consequently, a new fencing system that was both wind and rot resistant was required. But Ian's house backs onto a public footpath, so he was also looking for a fencing system that would be tall enough to provide security as well as privacy.

"We didn't want to put ourselves in the same position again, with a fence that couldn't stand the test of time," said Ian. "I started doing some research online, looking for alternative fence post materials. I looked into concrete and timber sleeve wraps, before eventually coming across steel and DuraPost By Birkdale. I was immediately impressed by the Commercial DuraPost, particularly when I learnt it had been tested for wind speeds of up to 90mph."

STRENGTH-TO-WEIGHT RATIO

Manufactured from cold rolled galvanised steel, the entire DuraPost range has a superior strength-to-weight ratio in comparison to traditional concrete and timber fence posts. When compared with the Classic DuraPost, Commercial DuraPost has a thicker steel, affording even greater strength. The larger variety of height options of the Commercial DuraPost also suited Ian's privacy needs; he opted for the 4m posts, which would sit 3m high above ground level.

"I was immediately impressed by the Commercial DuraPost, particularly when I learnt it had been tested for wind speeds of up to 90mph"

"I was further attracted by the range of colours that were available in addition to the standard galvanised steel finish," Ian commented. "I selected Olive Grey, which provided the perfect aesthetic to suit my garden design."

The polyester powder coatings used to colour all DuraPost products are salt spray, impact, scratch and humidity tested to ensure that the coating is corrosion resistant and adds to the overall durability of the product.

TRAINED INSTALLERS

Having selected the system, Ian called Birkdale's head office to arrange installation, where he was put in contact with Regional Sales Manager, Bruce Dickson. Ian explained that he wanted a solution quickly, due to the weakening fences that remained on his property. In response, Bruce put him in contact with fencing contractor Aaron Dennis, a local DuraPost Trained Installer, who began installing the system within just a few weeks.

"I was impressed with how versatile Commercial DuraPost is," commented Aaron, who had previously only installed the Classic DuraPost system. "It would work well for any small-scale garden or larger industrial environment. In this case, we decided to border either side of the rail, as opposed to close boarding on just the one side, to make the solution more wind resistant. I was able to achieve a really straight, neat finish easily using the DuraPost."

"I will definitely recommend DuraPost to others. It is so much lighter than concrete and once you put it in, it's in for good."

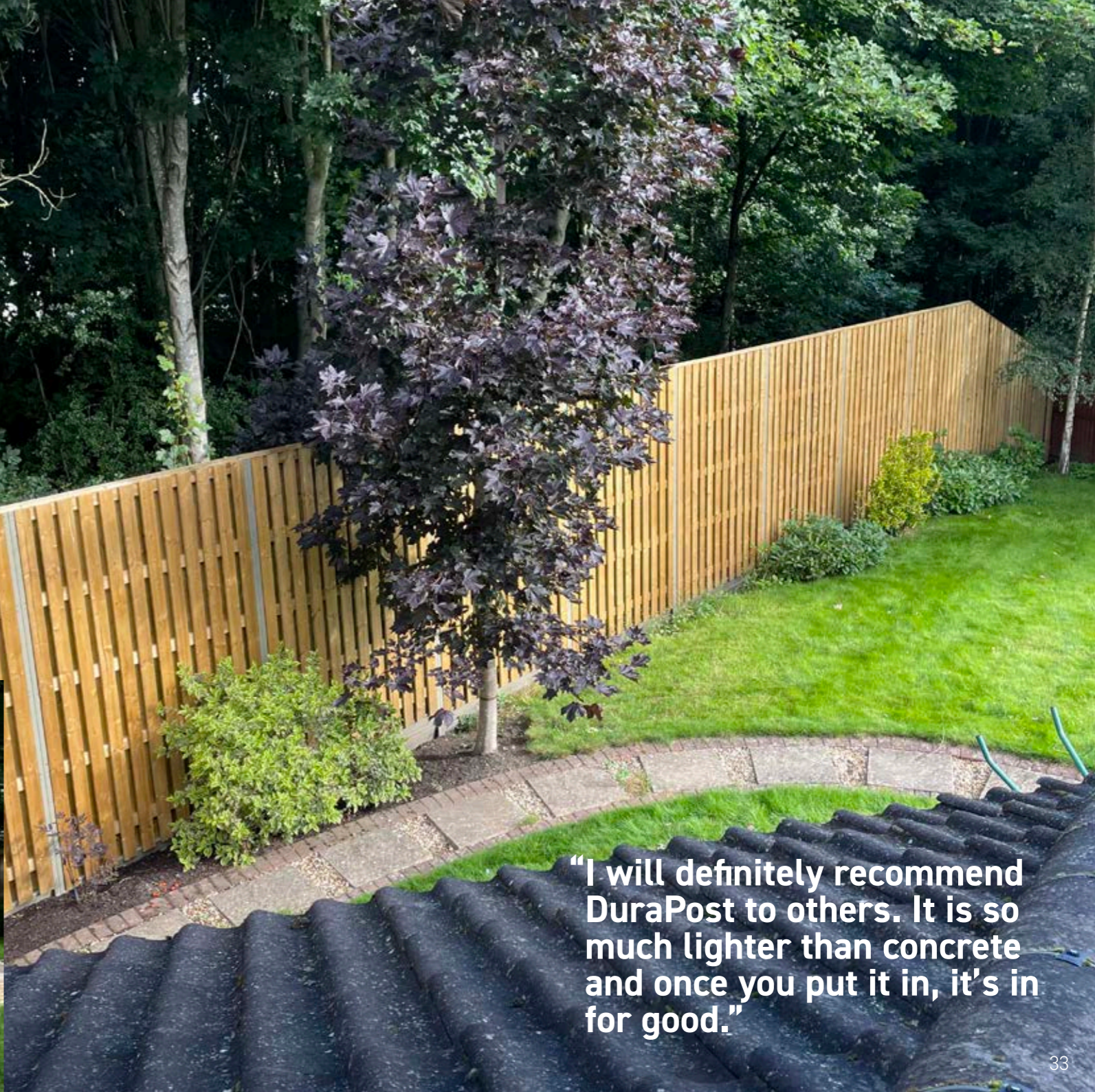
And when the project was completed, Ian Young was one happy customer: "My expectations were completely exceeded," he said. "I can't praise Commercial DuraPost or Aaron enough. Alongside its longevity, the fence looks superb. As a result, our next-door neighbours are having their fencing refurbished, as well. I'll have no qualms recommending Aaron and DuraPost to them."

"I was able to achieve a really straight, neat finish easily using the DuraPost."

GET THE LOOK



Commercial DuraPost



"I will definitely recommend DuraPost to others. It is so much lighter than concrete and once you put it in, it's in for good."

EASIER TO FIT THAN TRADITIONAL POSTS

THE DURAPOST SYSTEM IS DESIGNED TO BE
INSTALLED BY ONE PERSON

With DuraPost, it's never been more straightforward to fit your fencing. If you're using pre-made panels, simply dig the hole and set your first DuraPost in with FENCEMATE® Post Concrete. Secure your gravel board into position with colour-matched screws, then slot your pre-made fence panel to the DuraPost and screw into place. Next, position the second DuraPost, check the alignment and then set with Post Concrete. Job done!

FIND OUT HOW
TO INSTALL
DURAPOST HERE



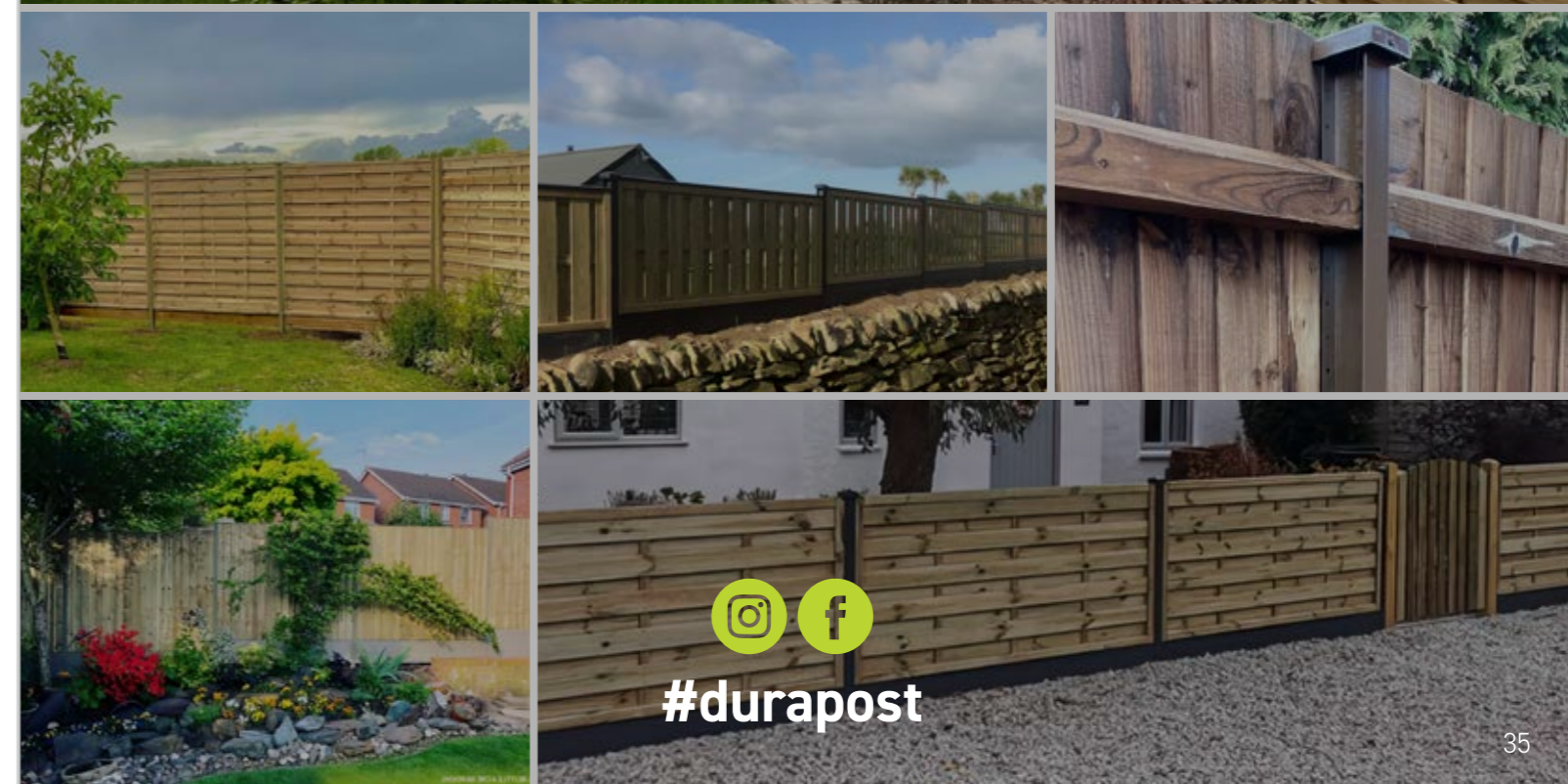
SCAN ME



For more installation tips and advice, visit: durapost.co.uk



FOR MORE IDEAS AND INSPIRATION, FOLLOW US ON SOCIAL MEDIA AND
DON'T FORGET TO TAG US WITH PHOTOS OF YOUR NEXT DURAPOST PROJECT



#durapost

DuraPost®

BY BIRKDALE

P R O F E S S I O N A L

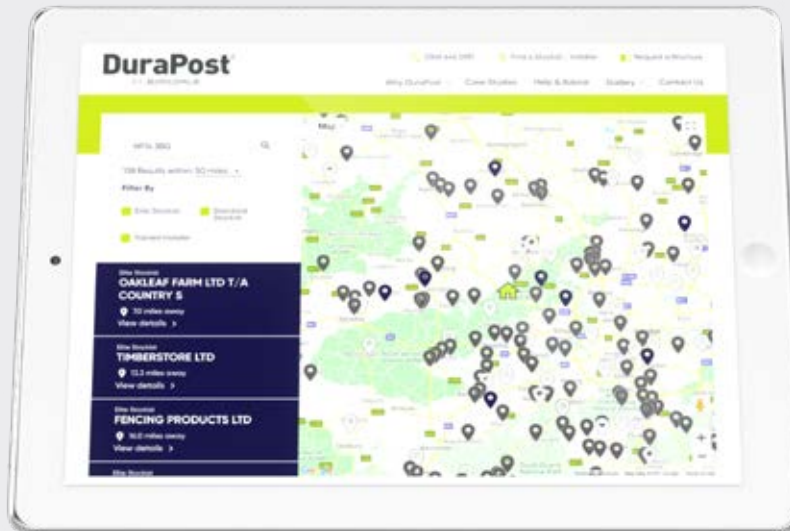
HERE WHEN YOU NEED US

Got a project in mind? Our independent stockists and DuraPost Trained Installers are ready and waiting to help. Find them across the UK and Ireland.

DuraPost®
BY BIRKDALE
ELITE STOCKIST

DuraPost®
BY BIRKDALE
STOCKIST

DuraPost®
BY BIRKDALE
TRAINED INSTALLER



DuraPost patents: GB2576969 GB2575681 GB2577148 **Registered Community Design:** 005518057-001 006429171-001

Granville House Unit E, The Heights Business Park, Ibstone Rd, Stokenchurch, High Wycombe HP14 3BG

durapost.co.uk | 0345 646 0591