

CSI 17" x 17" Wired Digital Radiography

Stellar M17



C Cost effective

S Superior reliability

I Innovative performance

Convenience

- AED (Automatic Exposure Detection)
- Up to 3 detectors can be connected
- Emergency Study
- Optimized digital retrofit Solution for X-ray system
- Led lamp applied

Speed

- Cycle Time : less than 4.5 Sec
- 1Gbps Ethernet

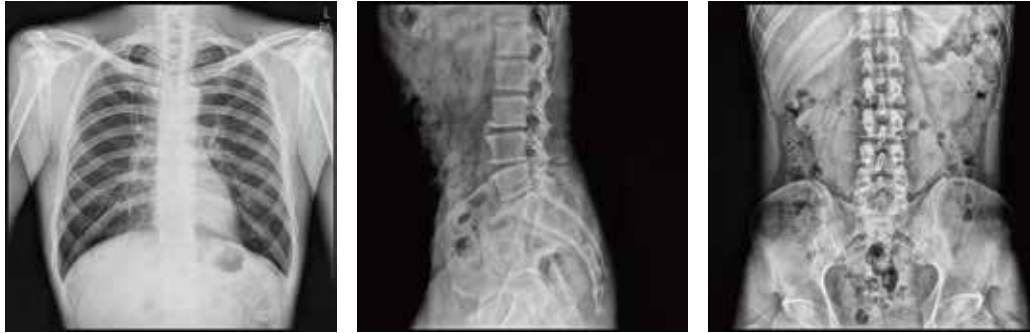


Stellar^{gram} for human



- Stellar^{gram}TM, our console software, is simple, fast, stable and compatible
- PromixTM : Signers processing tool
- Client Viewer (up to 5 places connectable, coming soon)

Images



Stellar M17 Specifications

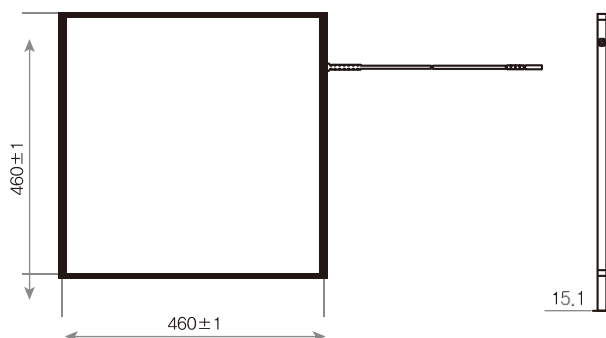
Sensor	Amorphous Silicon
Scintillator	CSI (Cesium-Iodide)
Active Pixel Area	427 x 427mm
Pixel Pitch	139 μ m
Resolution	3.6 lp/mm
Pixel Matrix	3072 x 3072
A/D Conversion	16 bit
Cycle Time	< 4.5 sec

PC min. Requirements	CPU : more than Intel Pentium G5400
	RAM : more than 8GB
	OS : Win 10 pro, 64bit
	Ethernet Card : Intel Gigabit
	Monitor : more than 17"

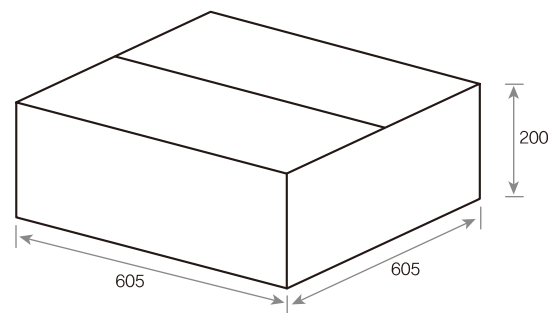
Interface(Wire)	1Gbps Ethernet
Dimension	460mm(W) x 460mm(L) x 15mm(H)
Weight	Detector : 4.0kg Console box : 1.1kg
Operation environment	5°C to 35°C , 30% to 85% RH
Power	DC 24Vdc, 1.25A



Dimension



Packing size : 10kg



SIGNERS CO., LTD.

E-mail : supia@signers.co.kr