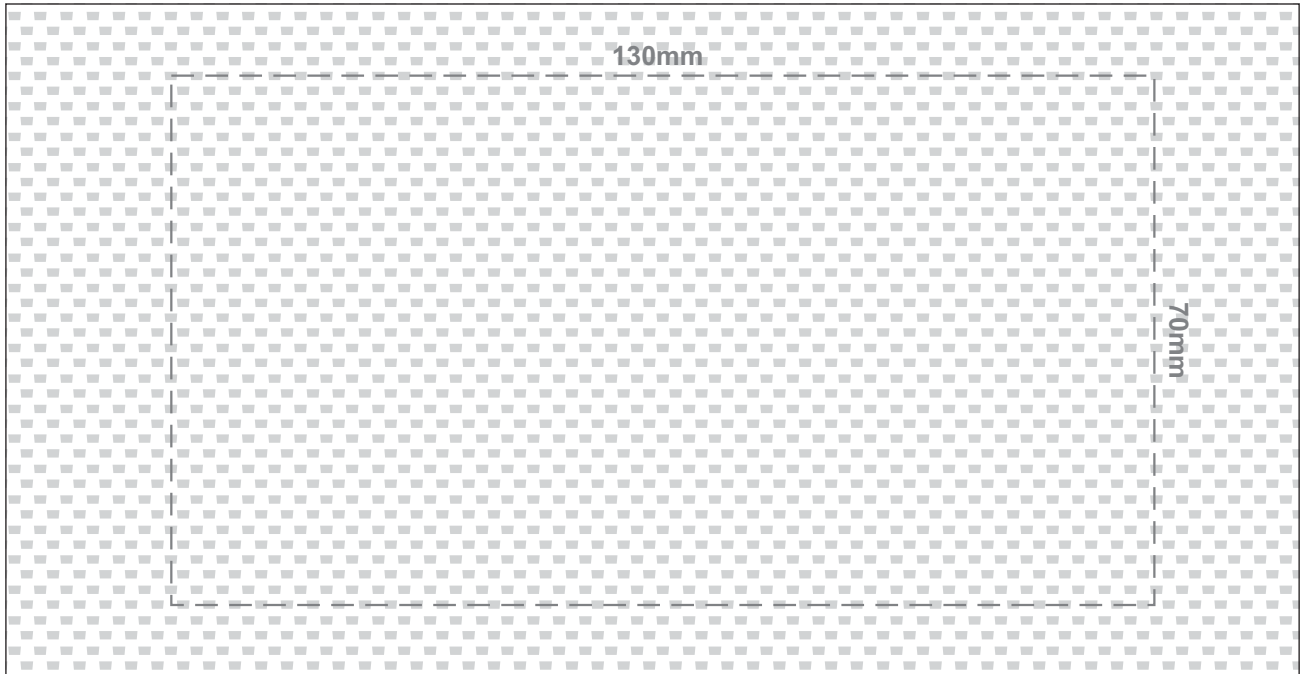
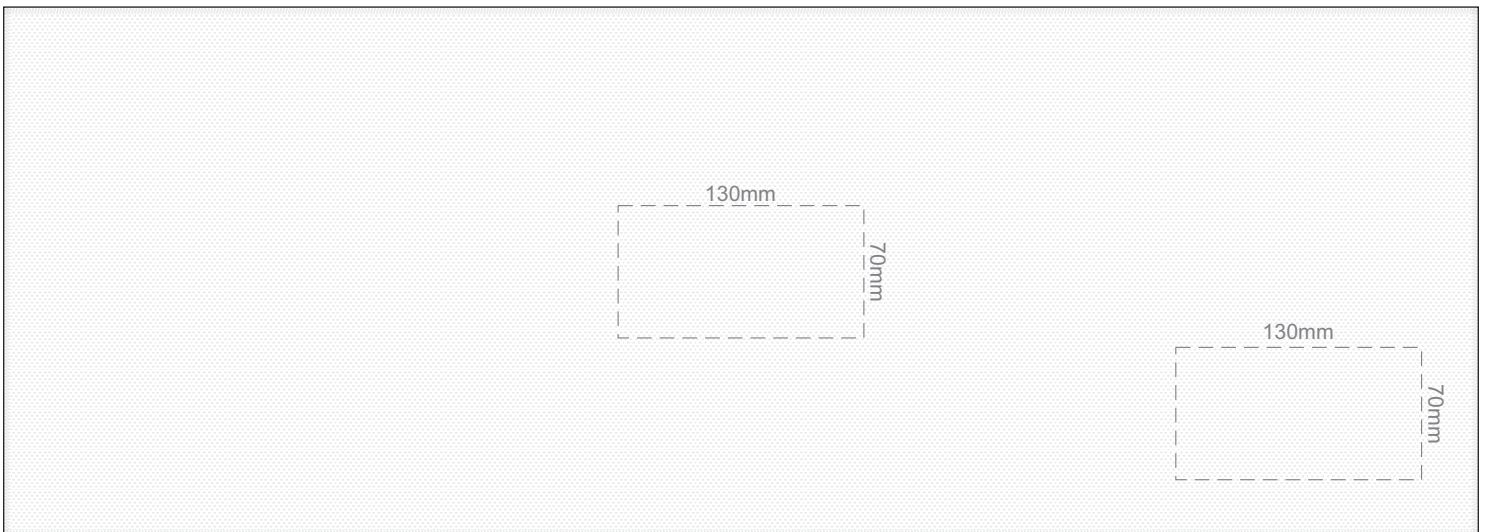




100% of Actual Print Size
Screen Print



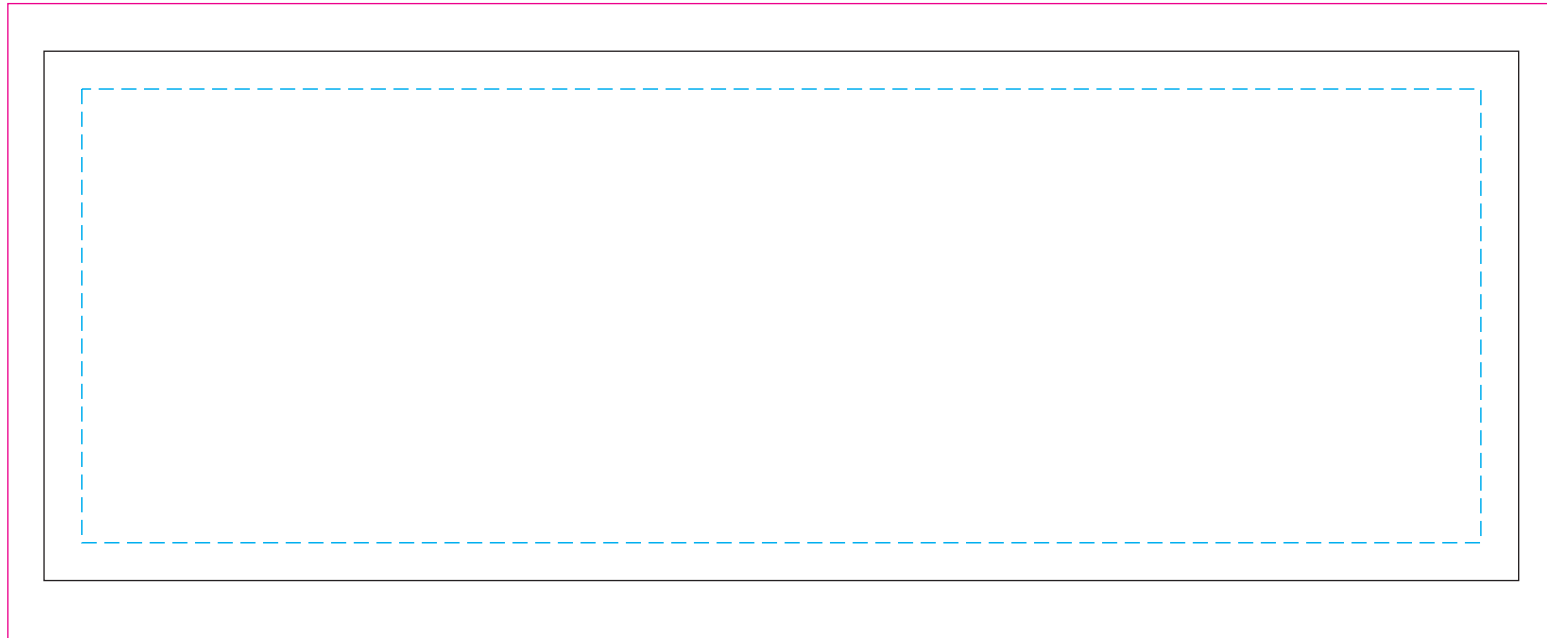
25% of Actual Size
Screen Print



25% of Approximate Size
Sublimation - White only



25% of Approximate Size
Sublimation Template



Blue Line = The SIGNIFICANT PRINT AREA
(Keep all critical images & text within this box)
Black Line = Maximum print area
Pink Line = Bleed off to here