

Certified for  
Microsoft Teams

**Yealink**



# YEALINK MEETINGBAR

## SIMPLE, SMART, SUSTAINABLE

Microsoft Teams Rooms on Android for Small and Medium Rooms



YEALINK NETWORK TECHNOLOGY CO., LTD.  
sales@yealink.com | www.yealink.com

2022-01-MEETINGBAR-TEAMS-EN-V1.0

[www.yealink.com](http://www.yealink.com)





## MEETINGBAR A20 AND A30

Yealink MeetingBar, the all-in-one video bar is designed for small and medium rooms. Based on the Android 9.0 OS and supporting cloud video platforms like Zoom and Microsoft Teams, the Yealink MeetingBar integrates the PC, camera and audio components into a simple video bar for a dedicated meeting room.



A20 small rooms (2-6 users)



A30 medium rooms (7-12 users)

## SIMPLE TO SET UP A DEDICATED ROOM

Designed with simplicity, Yealink MeetingBar integrates the camera, microphone and speakers into an all-in-one system. No PC or individual components are required, allowing plug-and-play for a dedicated room setup within minutes, greatly reducing the time needed for deployment and management.



HDMI

Power

CAT5e





# MEET THE CAMERA TAILORED TO YOUR SPACE




**MeetingBar A20** is designed for small rooms. It features a 20-megapixel sensor and 133° field of view, which ensure an ultra-clear and ultra-wide view even in small spaces.


**MeetingBar A30** dual-camera system is perfect for medium rooms. It features an optical camera with 10x optical zoom and an 8-megapixel digital camera with a 120° field of view, delivering a clear visual experience with depth, which is unable to be achieved with a single camera.


- 

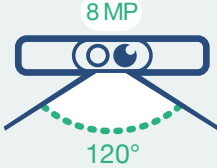
20 MegaPixel sensor
- 

133° field of view
- 

8x digital zoom

- 

Dual-camera system
- 

10x hybrid HD zoom
- 

8MP sensor, 120° field of view

# AI-POWERED VIDEO FOR AUTOMATIC PERFECTION

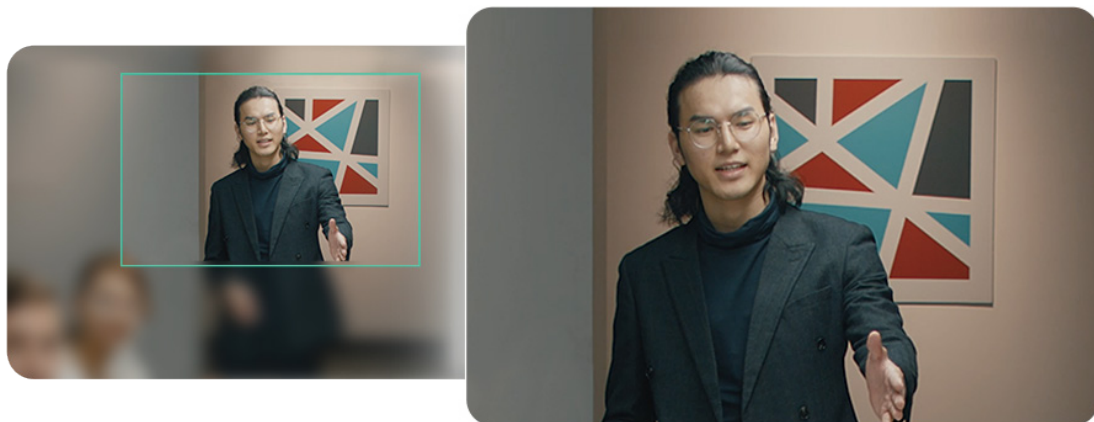
## Auto Framing

Auto Framing recognizes the number and the positions of attendees, framing everyone smoothly in the most appropriate view even in small spaces.



## Speaker Tracking

Speaker Tracking frames a real-time close-up on the presenter, bringing a vivid face-to-face meeting experience and ensuring attendees are well-engaged.



## Picture-in-Picture

Based on Speaker Tracking, users can switch to Picture-in-Picture (PiP) mode when starting a meeting. PiP tracks and frames the speaker in an individual window, which is separate from the other window, for a panoramic view, enabling users to keep an eye on who's talking even if the speaker is seated at a distance in a medium room.



## Multi-Focus Framing

Based on Auto Framing, users can switch to Multi-Focus Framing mode. It not only recognizes all attendees and frames each participant, but also turns equal windows of multiple persons into a recombined meeting view, solving the problem of distractions due to an unclear background.

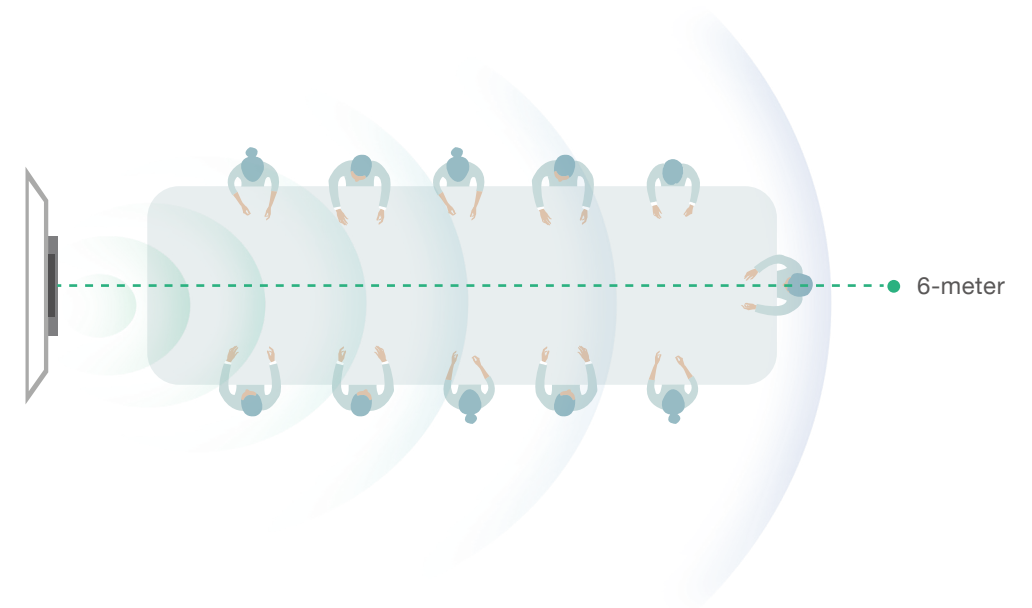






## IMMERSIVE VOICE IN EVERY CORNER

The built-in 8 MEMS microphone arrays and speaker in Yealink MeetingBar, completely cover up to 6-meter medium-sized spaces. As the MeetingBar is equipped with a powerful independent audio processing unit, you can enjoy a worry-free, full-duplex voice experience with superior performance.

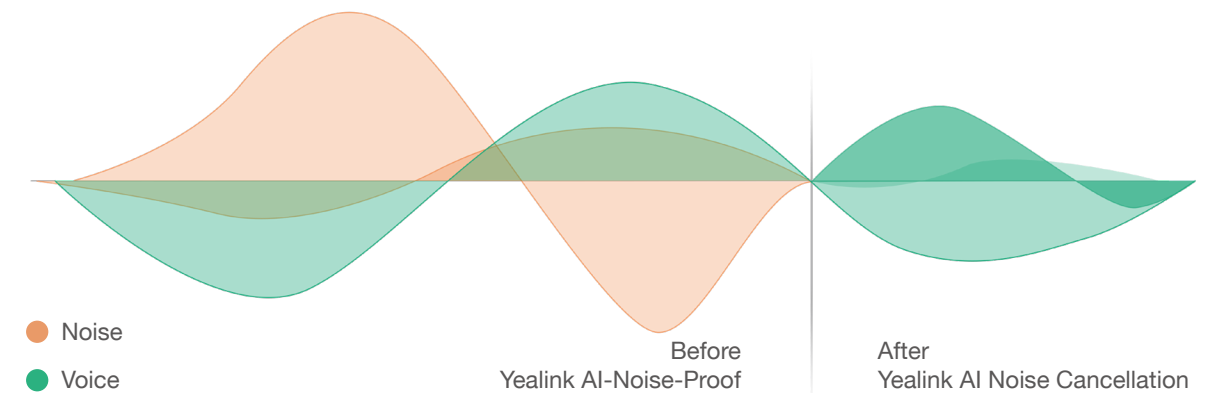






## AI-BASED VOICE CLEAN UP ALL THE NOISE

Yealink enhanced AI noise cancellation makes the audio experience more brilliant. Leveraging a massive deep-learning sound database to reduce background noises, it is more about intelligent audio analysis than standard filtering of audio frequencies. The distracting keyboard clatter, mouse clicks, footsteps, and other ambient noises are smartly pared back, ensuring that users enjoy crystal-clear audio quality.







# ONE MEETINGBAR EFFECTIVE MEETING DONE



**CTP18 touch console**  
Easy meeting control



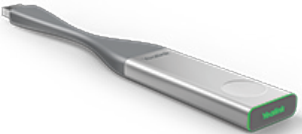
**Human motion sensor**  
Automatic screen wake-up



**Dual-screen support**  
Video meeting and content sharing



**TV mounting**  
Flexible mounting methods



**WPP20**  
Wireless content sharing



**Electric lens cap**  
Automatically protect room privacy



**Whiteboard collaboration**



**Mobile remote control**





# ONE-STOP SHOP BLAST MODERN WORKSPACE



## BYOD Mode | VCH51 extender

VCH51 is the HDMI ingest extender, integrating the content sharing and BYOD features. Yealink MeetingBar supports any UC platforms with the VCH51 extender. You can switch to BYOD Mode with one tap.



## Room scheduling | RoomPanel

Yealink MeetingBar works seamlessly with Yealink RoomPanel for rooms scheduling, including the at-a-glance room details, up-to-date scheduling status, one tap for reserving meeting spaces, and colored LED bar for indicating room status.



## Wireless Microphone Extension | VCM36-W

Yealink VCM36-W wireless microphone works with Yealink MeetingBar as an optional audio component. For medium to large meeting rooms, users can choose the flexible audio solution for a dedicated meeting room based on Android (coming soon).

# MeetingBar Specifications

## Items



Yealink A20



Yealink A30

Certification - Small Rooms (Microsoft, Zoom)	●	
Certification - Medium Rooms (Microsoft, Zoom)		●
Chipset	Qualcomm SDM845	Qualcomm SDM845
Operation System	Android 9	Android 9
Sensor	20MP	Dual-camera system with 8MP
Camera	FOV: 133° Zoom: 8X digital	Camera 1 : 8MP / 90° / 3.5X optical PTZ * 3X digital Camera 2 : 8MP / 120° / 4X digital
Maximum Encoding & Decoding capabilities	4K60	4K60
Speaker	Built-in speaker	Built-in speakers (2)
Microphone	Full duplex with built in 8 MEMS microphones	Full duplex with built in 8 MEMS microphones
Camera Privacy Cover	Electric, automatic	Electric, automatic
AI Camera Feature	Auto Framing / Speaker Tracking	Auto Framing / Speaker Tracking

## Connections

HDMI	2x HDMI-OUT (CEC supported)	
Wired content sharing	Through Yealink VCH51, easy to extend to the conf. table, HDMI & USB-C interface for different kinds of PC	
Ethernet port	10/100M/1000M	
Motion Sensor	●	
USB Ports	1x USB-A (A20) / 2x USB-A (A30)	
Line-ins	X	3.5mm line-in & out
Wi-Fi/Bluetooth	●	●
Security lock slot	●	●
Reset slot	●	●

## Touch Console

	Yealink CTP18	
Screen	8-inch touchscreen, 1280 x 800	
Flexibility	Bracket with adjustable angle: 28° ~ 50°, meets needs for difference perspectives	
PoE	● Standard with a PoE adapter	
Ultra Sonic Emitter	●	
Wall Mounts	Standard with wall mount bracket, set up on a table or mount on a wall	