

NEW SCHOOL BUILDING

The Nursery School in Kaleo is going from strength to strength. On leaving many of the pupils are advanced straight into Year 2 of Primary School as their academic skills are so far above those of their peers. The pupils also learn skills, such as breaking down new words into their phonic sounds and problem solving, which they will utilise throughout their primary education and beyond. By providing each child with a Primary School uniform, a Stationary Set and a School Bag, we ensure that every child leaving Kaleo Baptist Nursery School can move on into Primary School. If a child is not ready to move on into Primary School they stay in the Nursery School

for an extra year, thus ensuring that every pupil is literate and numerate when they move on into Primary School. Currently the teaching staff at the Nursery School are undertaking further studies in their own time in order to gain further teaching qualifications and improve their skills. We are so pleased with their dedication and hard work, and the results are evident.

The pupils' parents are also thrilled with the Nursery School. The standard of education means that it continues to be over subscribed each year, though we are hoping to work more closely with the other local Nurseries to help them utilise the resources we have sent



them and introduce new teaching ideas and techniques, thus helping them to improve also. The Nursery School farm is growing. Last year they were able to harvest over 100kg of beans, worth over £100, which provides enough beans for school dinners for an entire year.

The farm is run entirely by the pupils' parents and church members. In this way the parents are able to make an effective contribution to the Nursery School whilst not being prevented from accessing education due to a lack of finances.

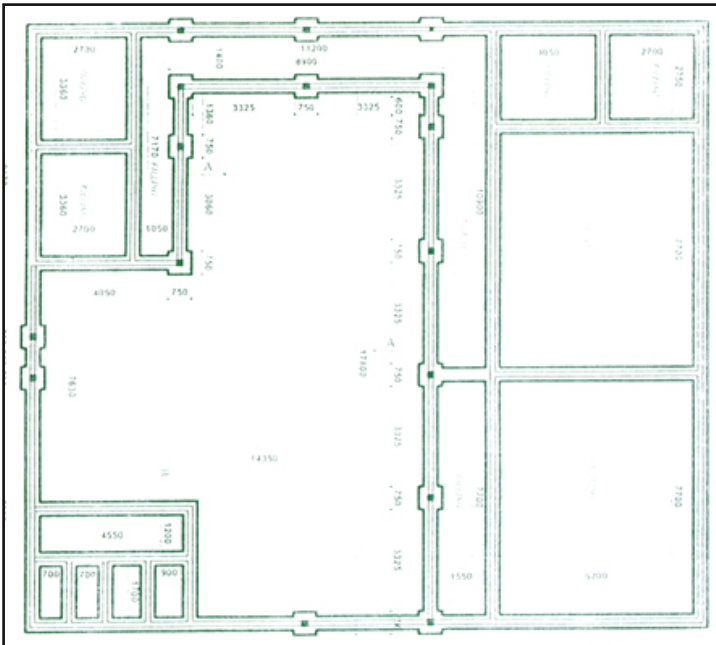
With the Nursery School being such a success we have agreed with our friends in Kaleo that it is time to build a new, dedicated Nursery School

building. This building will be more spacious with the facilities needed to improve the quality of education even further. It will have two large classrooms, in which the pupils' work can be displayed and all the resources can be effectively used, and also offices, storage rooms, a kitchen and a toilet block.

The church building and Sunday School, which are currently used for the Nursery School, will then be freed up to be used for other activities within the church during the week.

The new school will be located on the edge of Kaleo, just less than 1km from the church, in an area called Bor-Duori. Two small villages, Nyuglu and Kbanko, are within walking distance of the new school site which means children





from these areas will also be able to attend the Nursery School.

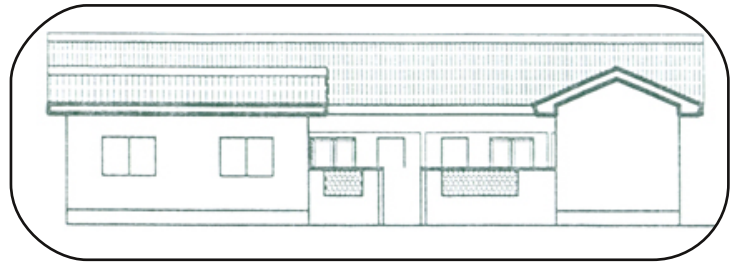
The new Nursery School will be built using the machinery we sent out to Ghana in 2004 to build the church. The building team will be headed up, as it was last time, by a Deacon of the church called Prosper. He was trained in the use of the building machinery by the technician, Abou, in 2004 and has continued to use it to manufacture floor tiles and roofing tiles for

customers as demand arises. Prosper will employ 4 labourers to work with him on the building and we estimate that the project could take as much as 3 years to complete. Every part of the process will be done by hand; digging the foundations, mixing and pouring the concrete, producing an estimated 10,000 blocks, 1,400 roofing tiles and 1,200 floor tiles and then using all these materials to build the school. Even the vibrating table used to manufacture

the tiles is hand-powered. We don't think it is reasonable to expect Prosper and his team to work full-time for 3 years without receiving a wage, so we have agreed to pay them the accepted local wage for a foreman and labourers, which works out at about £18.25 per day in total. We have also estimated the cost of all the building materials, such as cement, sand, aggregate and timber, at about £6000.

We are so grateful to everyone whose has supported the work in Kaleo over the years and

making a donation please contact our Treasurer, Jenny Capper, using the contact details at the bottom of the page. If you feel able to give a regular monthly donation to help with the building work please request a "Friends of Kaleo" form and we will post or email one to you. We would like to emphasise to all who are already giving regular donations as Friends of Kaleo that your donations are ring-fenced to be used solely for the running of the Nursery School. Every day 80 meals are cooked and the teachers earn their



we appreciate every donation that is made. We do, however, need to raise more money now in order to fund the new building. If you would like to help by

wages, so we continue to use your money to pay these day to day costs. Thank you so much and God bless you.

