

Woolsington Parish Council: Biodiversity Project 2021

A journey around Bank Foot, Callerton and Woolsington

Woolsington Parish Council has just completed the second year of an ambitious Biodiversity Project. Each year, plans are drawn up for wildlife benefits; the aim is to improve habitats for insects, bees and butterflies and in doing so enhance important green spaces for residents and visitors alike.

Bank Foot, Callerton and Woolsington also contain wonderful landscapes, local landmarks, veteran trees and areas of lovely scenery.

Here are just a few examples of how the Parish's biodiversity project is attempting to enhance this natural beauty during 2021.

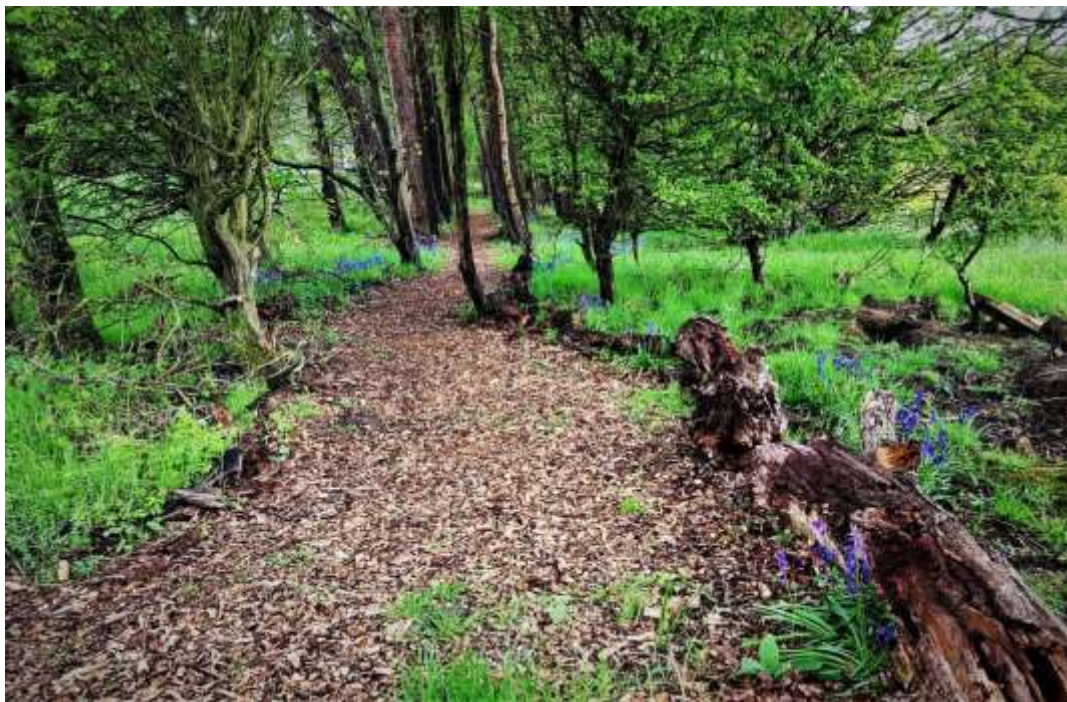


To date a commemorative Oak Tree and Sorbus Autumn Gold trees have been planted in **Callerton**. In the autumn 5000 crocus bulbs will be planted near this entrance to the village.





In **Woolsington** village wildflower seeds have been sown by local volunteers in the grass verges and native English bluebells were planted alongside woodland walkways. Young Hawthorn plants were also planted by volunteers along the edge of woodland on Ponteland road to mitigate for the loss of mature hawthorn bushes removed during recent construction work





Ponteland Road was once the only thoroughfare between the City and Ponteland. The stone wall, now 200 years old, and possibly older in places, still represents the backbone of this road from Bank Foot through the entire length of Woolsington.

Wildflower seeds funded by the Parish Council and sown by local volunteers have produced excellent results for this pilot scheme in between Woolsington Village and Bullocksteads. As a result the Parish Council is now considering, and costing, the prospect of extending this display along the entire kilometre route to Bank Foot.





The corner of Brunton Lane and Ponteland Road at **Bank Foot** has been the junction of old waggon ways for hundreds of years. It is now landmarked by an old plough.

The plough has been in situ for 25 years. donated by a local farmer and the City Council put it into position. It has been maintained by way of painting and planting around it by residents. Recently, unfortunately, it fell into disrepair but now, following support from WPC it has been restored and is standing proud.

