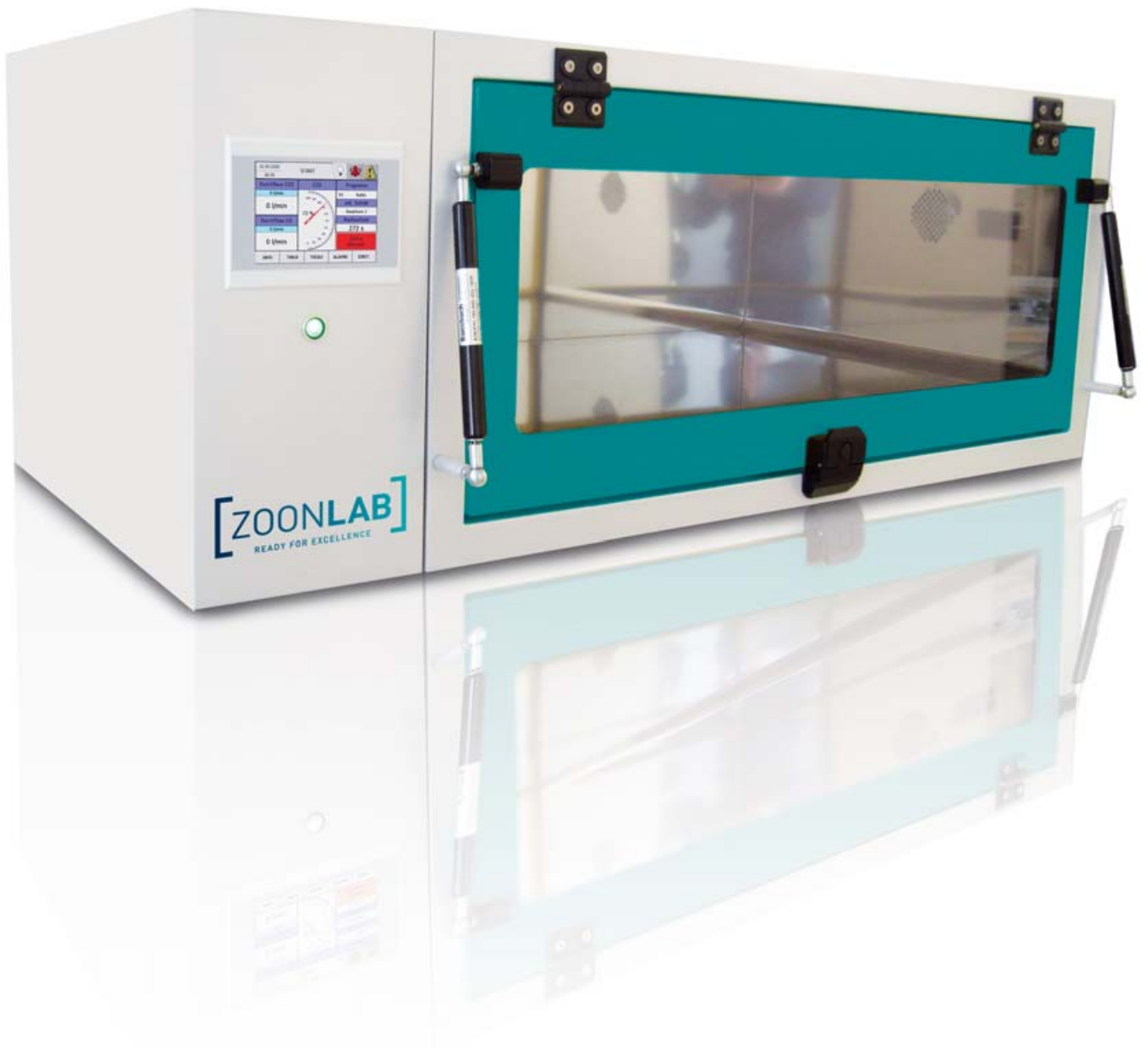


EXPOSURE LINE – CO₂ BOX

AIR FLOW SYSTEMS





EXPOSURE LINE – CO₂ BOX

Innovation for routine operation and research. The PLC-controlled CO₂ Box, developed by ZOONLAB, permits the application of gases and gas compounds in a reproducible process for the very first time.

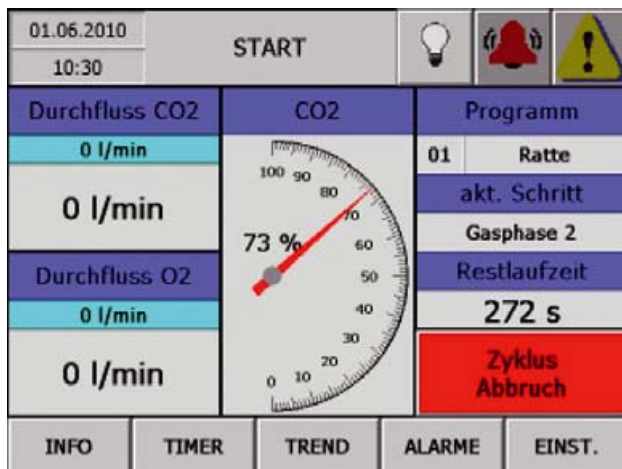
Consequently, the ZOONLAB CO₂ Box meets all established recommendations and statutory provisions for euthanasia of small rodents using CO₂.

Function and equipment:

- Programmable mixing ratio of 2 gases
- Programmable volume flow of gas compound
- Programmable time sequences
- Controllable processes
- Easy handling
- High operational safety
- Password-protected operating panel
- Up to 20 customer-specific programmes can be stored alongside the standard programmes
- Trend recording of all processes, displayed by graph
- Scope of delivery does not include the base frame

Options:

- Base frame



TFT touchpanel home screen



Programme selection

Cage type	Dimensions W x D (mm), no hood	Model M, chamber dimensions 600 x 640 x 300 mm (W x D x H), external dimensions 1,000 x 725 x 520 mm (W x D x H), volume 115 l	Model L, chamber dimensions 935 x 640 x 300 mm (W x D x H), external dimensions 1,334 x 725 x 520 mm (W x D x H), volume 180 l
1 L	160 x 362	4	7
2	205 x 265	4	8
2 L	205 x 365	3	6
HRC 500	194 x 408	4	6
3 / 3 H	265 x 425	2	4
4	380 x 590	1	2
Order No.		5144501S	5144502S
Accessories			
Base frame		5144506	5144504

Subject to technical modifications.