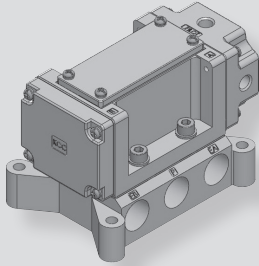
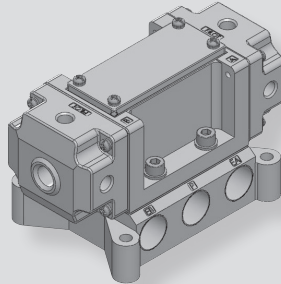


# KSA4000 series



KSA4130



KSA4230

## How to Order

KSA    4   1     30   -   03  

①                      ②                      ③                      ④

### ① Port type

Nil	Rc(PT) (Standard)
G	G

### ③ Body nominal size

30	3/8
----	-----

### ② Function

Function	Symbol
1 Single acting	
2 Double acting	

※ ISO standard notation, 1:P, 2:B, 3:EB, 4:A, 5:EA.

### ④ Port size

03	Rc(PT), G 3/8
04	Rc(PT), G 1/2

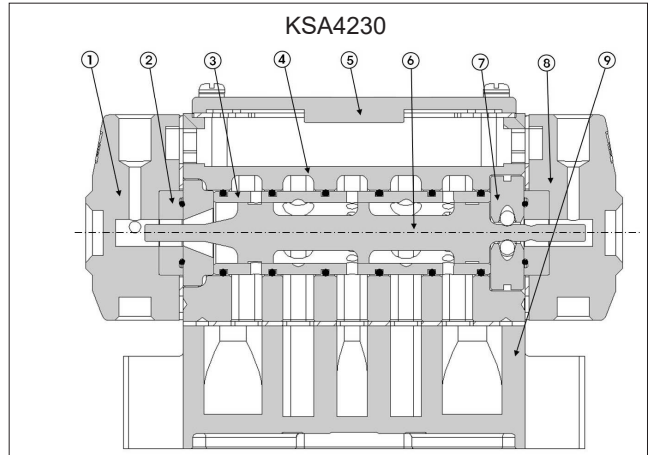
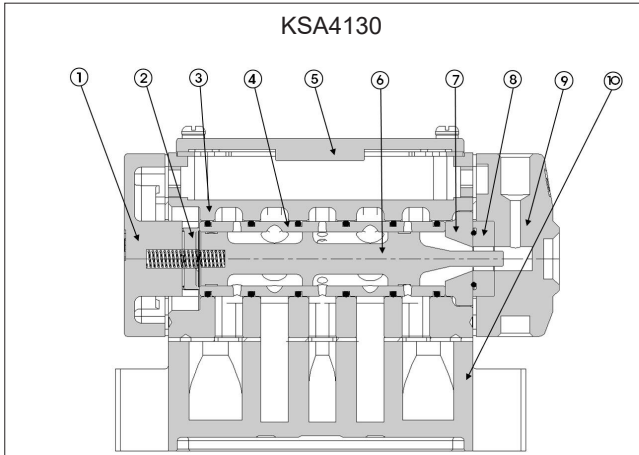
## Specifications

Type	KSA4130	KSA4230
Fluid	Air, Inert gas	
Port size	Rc(PT) 3/8, 1/2, G 3/8, 1/2	
External pilot port size	Rc(PT) 1/8	
Effective sectional area Smm <sup>2</sup> (Cv)	Rc(PT) 3/8	43mm <sup>2</sup> (2.4)
	Rc(PT) 1/2	49mm <sup>2</sup> (2.72)
Operating pressure	0~10kgf/cm <sup>2</sup> (0~1MPa)	
Pilot pressure	1~10kgf/cm <sup>2</sup> (0.1~1MPa)	
Max. operating frequency	5 cycle/sec	3 cycle /sec
Lubrication	Not required (But, when lubricated Turbine oil ISO VG32 or equivalent)	
Manual override	Manual button (Option)	
Ambient temperature	-20℃ ~ 50℃	
Fluid temperature	5℃ ~ 60℃	
Weight	750g	860g

## Features

- Direct acting type
- Large capacity valve can be used for large actuator.
- Non-lubricated type and with dust proof metal sealing.
- Due to the balance spool type neither of the ports being supplied with pressure will affect the valve operation.

**Structure**



Part no.	Parts	Material
1	Side Cover	AL D/C
2	Spool Cushion	Plastic Resin
3	Body	AL D/C
4	Sleeve	SUS
5	Upper Cover	AL D/C
6	Spool	SUS
7	Sleeve Cover	Plastic Resin
8	Adapter Plate Connecting Cover	Plastic Resin
9	Adapter Plate	AL D/C
10	Sub Plate	AL D/C

Part no.	Parts	Material
1	Adapter Plate	AL D/C
2	Sleeve Cover	Plastic Resin
3	Body	AL D/C
4	Sleeve	SUS
5	Upper Cover	AL D/C
6	Spool	SUS
7	Spool Holder	Plastic Resin
8	Adapter Plate Connecting Cover	Plastic Resin
9	Sub Plate	AL D/C

**Dimensions**

