



Dobson Marine Chandlery

Electric Motors

Garmin Force 57" Trolling Motor

The Garmin Force trolling motor has the power to move you from spot to spot more quickly and stand up better to winds and currents and it's still whisper quiet.

- Shaft length: 57" (144.78 cm)
- For use in: Freshwater only
- Mounting location: Bow
- Mount style: Scissor-style mount
- Max thrust: 100 lbs at 36V; 80lbs at 24 Vdc
- Voltage: 24 V or 36 V
- Electric steering: Yes
- Lift-assist: Dual gas springs
- Built-in heading sensor: Yes
- Built-in GPS: Yes (high-sensitivity GPS)
- Warranty: 3-year, limited lifetime on shaft
- Water rating (components above water): IPX7
- Wireless remote: Yes (included)
- Foot pedal: Yes (included)
- Battery indicator: Yes
- Variable speed control: Yes (10 steps)



Garmin Force 50" Trolling Motor

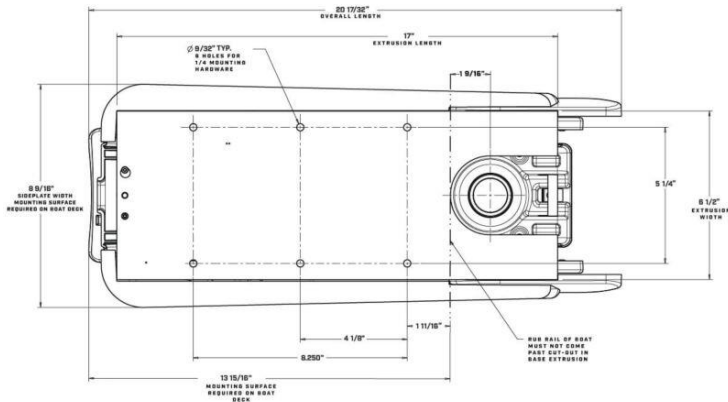
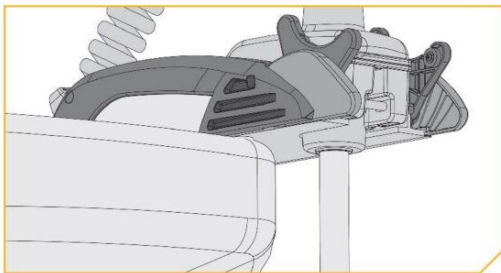
The Garmin Force trolling motor has the power to move you from spot to spot more quickly and stand up better to winds and currents and it's still whisper quiet.

- Shaft length: 50" (127 cm)
- For use in: Freshwater only
- Mounting location: Bow
- Mount style: Scissor-style mount
- Max thrust: 100 lbs at 36V; 80lbs at 24 Vdc
- Voltage: 24 V or 36 V
- Electric steering: Yes
- Lift-assist: Dual gas springs
- Built-in heading sensor: Yes
- Built-in GPS: Yes (high-sensitivity GPS)
- Warranty: 3-year, limited lifetime on shaft
- Water rating (components above water): IPX7
- Wireless remote: Yes (included)
- Foot pedal: Yes (included)
- Battery indicator: Yes
- Variable speed control: Yes (10 steps)



Terrova 54" Shaft Length, 12v, i-Pilot GPS (includes Autopilot)

What makes Terrova® so popular? Start with i-Pilot GPS trolling system, including Spot-Lock. 55 pounds of thrust and effortless Lift-Assist Design. Altogether, it's a trusted motor with huge innovations that doesn't quit. What's not to love?



Fortrex Universal Sonar 2, 45" Shaft Length, 24v

Go ahead, make its day. Fortrex® is fearless, with a ruthlessly tough anodized aluminium mount, Mono-Arm Design and with 80 pounds of thrust. It tears through anything in its path — from thick weeds to stump fields — to deliver you to the fish.

Fortrex Universal Sonar 2, 45" Shaft Length, 36v

Go ahead, make its day. Fortrex® is fearless, with a ruthlessly tough anodized aluminium mount, Mono-Arm Design and with 112 pounds of thrust. It tears through anything in its path — from thick weeds to stump fields — to deliver you to the fish.



Ultrax Universal Sonar 2, 52" Shaft, 36v with i-Pilot GPS (includes Autopilot)

Step on the Ultrax™ foot pedal and feel what Power Steering does to a trolling motor. Then tap the Spot-Lock button to stay on a fishing spot automatically. Only Ultrax combines the most responsive, intuitive steering ever with GPS-powered automatic boat control. The only thing we didn't do to it, is compromise.



RT TERROVA 112/IP BT 72" (182.88 cm)



Riptide Terrova answers every question and leaves no doubt. Power? It's got 112 pounds of thrust. Control? i-Pilot GPS trolling system including Spot-Lock, and stow and deploy it effortlessly with new Lift-Assist Design. And stealth? It's a Riptide®. Enough said.

The wireless system that started fishing's GPS revolution, i-Pilot delivers speed, steering, Spot-Lock, and the ability to record and retrace paths on the water, all at your fingertips.

Ultrrex Combo (i-Pilot Link Pre-Installed) Mega Side Imaging

Step on the Ultrrex™ foot pedal and feel what Power Steering does to a trolling motor. Then tap the Spot-Lock button to stay on a fishing spot automatically. Only Ultrrex combines the most responsive, intuitive steering ever with GPS-powered automatic boat control. The only thing we didn't do to it, is compromise. Select models now available with Built-In MEGA Side and Down Imaging™ Sonar.



Ulterra Combo Universal (i-Pilot Pre-Installed)

Only Ulterra™ features Auto Stow/Deploy and Power Trim, as well as your choice of i-Pilot or i-Pilot Link, and a multi-function foot pedal. You can stow, deploy and trim Ulterra from the remote or the foot pedal, meaning you never have to touch your motor again — unless you want to high-five it. Select models now available with Built-In MEGA Down Imaging™.



Terrova Bow-Mount Combo (i-Pilot Link Pre-installed, Foot Pedal Included)

What makes Terrova® so popular? Start with an i-Pilot Link GPS trolling system, including Spot-Lock and Humminbird fishfinder integration. 55/80/112 pounds of thrust and effortless Lift-Assist Design. Altogether, it's a trusted motor with huge innovations that doesn't quit. What's not to love?



Powerdrive Bow-Mount

Reliable. Capable. And fully able to handle anything a day of fishing brings. PowerDrive™ shows up to the launch ramp every day with big-time technology, trusted power and easy operation. And with a mount that's tough, sleek and built to take a beating, it's going to keep showing up day after day.

Endura Max

Endura is trusted worldwide as the most durable, reliable, hard-working transom-mount motor on the water. And Endura Max takes that legacy to a new level, adding Digital Maximizer to help the motor run up to five times longer on a single charge.

Motors with Digital Maximizer draw only as much power as you need, so you stay on the water longer.



Traxxis

Traxxis® is loaded with features that put your boat right where you need it, day in and day out. Versatile steering tension control. Easy One-Hand Stow. Quick depth adjustments. Traxxis never runs out of ways to keep you on the fish.



Battery Power Center

For small boats, transom applications (boats that do not have battery compartments), these easy access external battery terminals allow trolling motor leads and charger leads to be connected without opening the box. Built-in battery meter displays current "state of charge". Includes two 12-volt accessory plugs, and 2 manual reset circuit breakers (10 amp for accessory plugs and 60 amp for trolling motor). Fits group 24- and 27-size batteries.



