



THE *FUTURE* OF TECHNOLOGY AND INNOVATION *AVAILABLE TODAY*

EUROXWAY SRL (s.u.) Office: Viale della Repubblica 7/C - 42024 Castelnovo di Sotto (RE) Italy

Part. IVA - Cod. Fiscale (VAT/TVA): IT 01546560358 - Office Phone: +39 0522 682548 - www.euroxway.com - Mail: admin@euroxway.it
Data, and specifications in this catalog are subject to change without notice

CATALOG BUILT: 09/2021



EUROXWAY SRL WAS BORN AS A SPECIALIZED COMPANY IN SELLING "*CUSTOMIZED EQUIPMENT FOR CREMATORIA*" IN EUROPE, SUCH AS COFFINS AUTOLOADER, TROLLEY TRANSPORTER, ASHES PROCESSOR AND THE PATENTED **SECURCEN®** RADIO-CONTROLLED SYSTEM DESIGNED FOR THE DECEASED TRACEABILITY, FROM THE MORGUE TO THE CEMETERY.

EUROXWAY CAN PROVIDE SERVICES BASED ON CUSTOMER'S NEEDS.

TO GUARANTEE A COMPLETE SERVICE TO OUR CUSTOMERS, WE ALSO PROVIDE UPON REQUEST TECHNICAL TRAINING TO RESPECTFULLY USE OUR EQUIPMENT, FRONT TO FAMILIES DURING FUNERALS.

- **EXW SECURCEN® 2.0** - IS A PATENTED RADIO-CONTROLLED SYSTEM, DESIGNED FOR THE DECEASED TRACEABILITY FROM THE MORGUE TO THE CEMETERY, WORKING THROUGH RFID TECHNOLOGY.
- **EXW AUTOLOADER** - FULL AUTOMATIC AUTOLOADER OF SMALL DIMENSIONS, WHICH LOADS COFFINS IN CREMATORIUM FOR HUMAN BEINGS, MADE ACCORDING TO THE NEEDS OF EACH CUSTOMER.
- **EXW TROLLEY** - TROLLEY FOR THE COFFINS TRANSPORT INSIDE OF THE CREMATORIUM, BUILT IN FULL COMPLIANCE WITH C.E. REGULATIONS.
- **EXW PRO-CEN** - AUTOMATIC ASHES-METALS SEPARATION PROCESSOR FOR HUMANS REST OF CREMATIONS.
- **EXW URNS** - WIDE SELECTION OF LUXURY URNS.

THOSE ARE THE PRODUCTS WE SELL ALL OVER EUROPE, AFTER YEARS OF EXPERIENCE IN THIS FIELD.

OUR PRODUCTS ARE USED SINCE 2007 IN MORE THAN 113 CREMATORIALS AROUND FRANCE, ENGLAND, BELGIUM, ITALY, POLAND, PORTUGAL AND NORDIC COUNTRIES.

BOTH PRIVATE AND PUBLIC BUYERS AFFIRM TO BE MORE THAN SATISFIED. WE SELL, INSTALL AND PROVIDE ASSISTANCE WITH EXPERIENCED STAFF.

SECURCEN[®] 2.0 patented by EUROXWAY® SRL

patented system, with RFID technology, for the traceability of the deceased

SECURCEN[®] (PATENTED) IS A RADIO-CONTROLLED SYSTEM WHICH USES RFID TECHNOLOGY, DESIGNED FOR THE DECEASED TRACEABILITY FROM THE MORGUE TO THE CEMETERY. THROUGHOUT THE WHOLE PROCESS, IT IMPLEMENTS A MONITORING OF SAFETY PROCEDURES DURING THE DECEASED ACCEPTANCE, THE CREMATION PROCESS AND THE ASHES PREPARATION IN THE URN. SECURCEN[®] RESPONDS EFFECTIVELY TO THE FAMILIES' NEEDS ON THE CERTAINTY TO GET BACK THE ASHES OF THEIR BELOVED RELATIVES, AFTER THE CREMATION PROCESS.

DATA LOGGING TO SYSTEM **SECURCEN[®]**



IDENTIFICATION OF THE DECEASED



DECEASED CREMATORIUM CHECK-IN



IDENTIFICATION OF EACH ROOM



CONTROL OF ALL TECHNICAL EQUIPMENT



PROCESSING OF ASHES



URN DELIVERED TO THE FAMILY



CEMETERY



THE AUTOLOADERS

THE AUTOLOADERS CAN BE MATCHED TO EVERY KIND OF OVEN

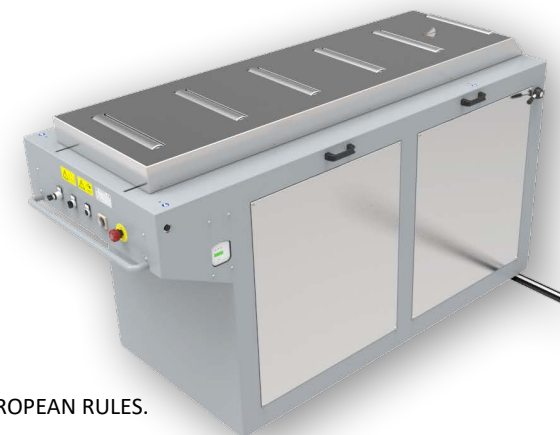
THE **FULL AUTOMATIC AUTOLOADER** INTRODUCES COFFINS IN THE OVEN.

SUITABLE FOR EVERY HEIGHTS OF THE OVEN, IT IS DESIGNED ON CUSTOMER'S NEEDS. BOTH ELECTRIC AND MANUAL LOADING OF THE COFFIN (*FULLY RESPECTING THE EUROPEAN REGULATIONS*).

LATERAL MOVEMENT OVER WHEELS OR RAILS. COMMANDS ARE BOTH ON THE AUTOLOADER AND THE REMOTE CONTROL (RADIO-LOADER).

SOME OF THE EUROXWAY AUTOLOADER ADVANTAGES:

- SMALL, EASY TO USE, FAST COFFIN CHARGING, WORKS IN FULL-AUTOMATIC / SEMI-AUTOMATIC / MANUAL MODE, SUITABLE FOR EVERY KIND OF OVEN HEIGHT.
- ADAPTABLE TO EVERY KIND OF OVEN, AS THEY ARE MADE FOLLOWING CUSTOMER'S NEEDS.
- SMALL DIMENSION INTRODUCER WHICH GUARANTEES COMFORT EVEN IN NARROW SPACES.
- DIFFERENT WORKING LEVELS: FROM +00mm UP TO +1200mm.
- ALL THE AUTOLOADER OPERATING LEVELS ARE AND CAN BE CUSTOMIZED.
- IT REALIZES A CORRECT COFFIN INTRODUCTION IN THE OVEN, IN ORDER TO AVOID DANGEROUS SITUATIONS FOR THE STAFF AND/OR FOR THE OVEN ITSELF.
- POSSIBILITY OF LOADING LARGE SIZE COFFINS OR COFFINS WITH FEET WITHOUT NEEDING TO BUILD PLINTHS IN THE OVEN INNER SOLE.
- MAXIMUM LOADED COFFIN WEIGHT = 300KG.
- COFFIN WEIGHT CALCULATED BY MEASURING SYSTEM BEFORE THE CREMATION, FOR CHOOSING THE MOST SUITABLE TYPE OF CREMATION.
- SPEED - INTRODUCING THE COFFIN IN THE OVEN IN LOWER THAN 20sec (*FULLY RESPECTING THE EUROPEAN REGULATIONS*).
- BRIDGE ROTATION SYSTEM: 180° FREE-ROTATION WITH MECHANICAL SYSTEM BLOCK AT +90° / 0° / -90° (*AFTER TECHNICAL TEST*).
- EASY TO INSTALL, USE AND MAINTAIN.
- SIMPLE CONTROL AND COMMAND SYSTEM (*ON THE AUTOLOADER, THROUGH THE REMOTE CONTROL OR ON THE OVEN CONSOLE*).
- FIXED OR MOVABLE AUTOLOADER POSITION (*IN FRONT OF EVERY WORKING OVEN - MOBILITY OVER WHEELS AND ADJUSTABLE + - 30mm*).
- EXTREMELY COMFORTABLE MOVABLE AUTOLOADER POSITION FOR THE OPERATOR (*LOADING, UNLOADING, REMOTE CONTROL, ETC.*).
- PROGRAMMABLE MAINTENANCE WITH MULTI-ANNUAL CONTRACTS OF ASSISTANCE (*WITH AUTHORIZED EUROXWAY STAFF*).
- THE AUTOLOADER WORKS WITH AVERAGE BATTERIES OR ELECTRICITY GRID FROM 110V TO 240V.
- IN CASE OF AN ELECTRICITY BLACKOUT, THE MACHINE HAS A MANUAL COFFIN INTRODUCTION SYSTEM, ALWAYS FULLY RESPECTING THE EUROPEAN RULES.



EXW AUTOLOADER 004A - LATERAL PUSH TO CHANGE POSITION OVER RAIL OR LOCKABLE WHEELS**CUSTOMER'S OPTIONAL CHOICES:**

- LATERAL TRANSFER ON RAIL OR LOCKABLE WHEELS
- ELECTRIC POWER SUPPLY (110V-240V)
- RECHARGEABLE BATTERIES ALIMENTATION (24V 80AH (20H)) WITH HIGH FREQUENCY CHARGER
- COMMAND ON THE MACHINE ONLY
- COMMAND ON THE MACHINE AND THROUGH REMOTE CONTROL
- COMMAND ON THE OVEN, ON SEPARATE PLC OR TABLET
- CUSTOMIZED HEIGHT, DEPENDING ON THE OVEN
- ADDITIONAL POSSIBILITY OF HEIGHT REGULATION (+ - 30mm)
- MEASURING COFFIN WEIGHT SYSTEM, BEFORE CREMATION

STANDARD EQUIPMENT:

- MAXIMUM WEIGHT = 300KG
- BRIDGE LENGHT 630mm - MAXIMUM DIMENSIONS = 970mm x 2'260mm
- OVEN PENETRATION: 1'400mm (ADDITIONAL +30mm)
- SAFETY STOP BUTTON
- SECURITY KEY (ON/OFF)
- ACCELERATION AND SPEED REGULATION FOR THE COFFIN TO BE INTRODUCED
- HANDLES FOR LATERAL AND POSTERIOR MOVEMENTS
- MANUAL MECHANISM TO INTRODUCE THE COFFIN IN CASE OF POWER BLACKOUT
- HANDBOOK PROVIDED IN THE CUSTOMER'S NATIVE LANGUAGE
- EU DECLARATION OF CONFORMITY

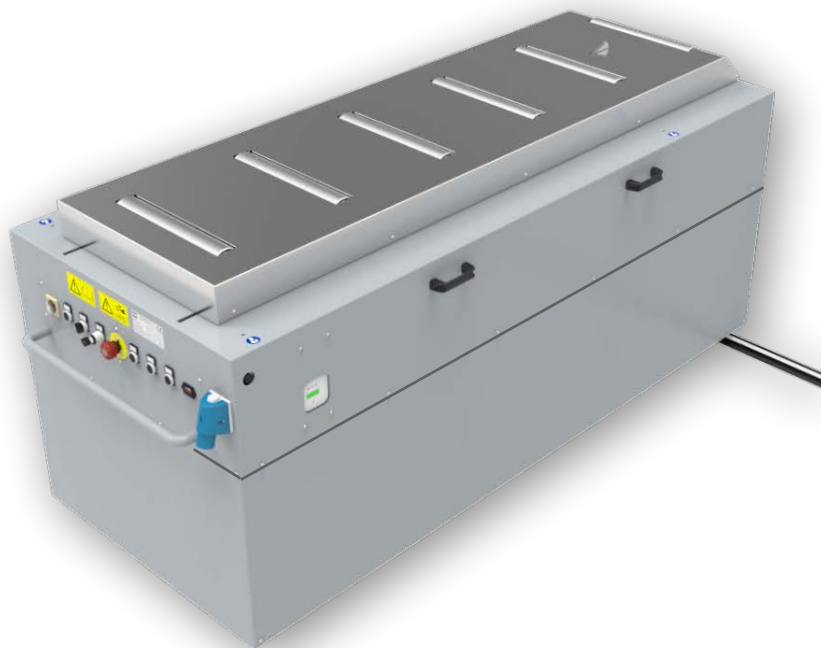


EXW AUTOLOADER 003E - LOADER FOR TWO OR MORE OVEN HEIGHTS IN THE SAME CREMATORIUM**CUSTOMER'S OPTIONAL CHOICES:**

- LATERAL TRANSFER ON RAIL OR LOCKABLE WHEELS
- ELECTRIC POWER SUPPLY (110V-240V)
- RECHARGEABLE BATTERIES ALIMENTATION (24V 80AH (20H)) WITH HIGH FREQUENCY CHARGER
- COMMAND ON THE MACHINE ONLY
- COMMAND ON THE MACHINE AND THROUGH REMOTE CONTROL
- COMMAND ON THE OVEN, ON SEPARATE PLC OR TABLET
- CUSTOMIZED HEIGHTS, DEPENDING ON THE OVEN
- ADDITIONAL POSSIBILITY OF HEIGHT REGULATION (+ - 30mm)
- MEASURING COFFIN WEIGHT SYSTEM, BEFORE CREMATION

STANDARD EQUIPMENT:

- MAXIMUM WEIGHT = 300KG
- BRIDGE LENGHT 630mm - MAXIMUM DIMENSIONS = 970mm x 2'260mm
- OVEN PENETRATION: 1'400mm (ADDITIONAL +30mm)
- SAFETY STOP BUTTON
- SECURITY KEY (ON/OFF)
- ACCELERATION AND SPEED REGULATION FOR THE COFFIN TO BE INTRODUCED
- HANDLES FOR LATERAL AND POSTERIOR MOVEMENTS
- MANUAL MECHANISM TO INTRODUCE THE COFFIN IN CASE OF POWER BLACKOUT
- HANDBOOK PROVIDED IN THE CUSTOMER'S NATIVE LANGUAGE
- EU DECLARATION OF CONFORMITY



EXW AUTOLOADER 003E - LOADER FOR TWO OR MORE OVEN HEIGHTS IN THE SAME CREMATORIUM**CUSTOMER'S OPTIONAL CHOICES:**

- LATERAL TRANSFER ON RAIL OR LOCKABLE WHEELS
- ELECTRIC POWER SUPPLY (110V-240V)
- RECHARGEABLE BATTERIES ALIMENTATION (24V 80AH (20H)) WITH HIGH FREQUENCY CHARGER
- COMMAND ON THE MACHINE ONLY
- COMMAND ON THE MACHINE AND THROUGH REMOTE CONTROL
- COMMAND ON THE OVEN, ON SEPARATE PLC OR TABLET
- CUSTOMIZED HEIGHTS, FOR TWO OR MORE OVEN
- ADDITIONAL POSSIBILITY OF HEIGHT REGULATION (+ - 30mm)
- MEASURING COFFIN WEIGHT SYSTEM, BEFORE CREMATION

STANDARD EQUIPMENT:

- MAXIMUM WEIGHT = 300KG
- BRIDGE LENGHT 630mm - MAXIMUM DIMENSIONS = 970mm x 2'260mm
- OVEN PENETRATION: 1'400mm (ADDITIONAL +30mm)
- SAFETY STOP BUTTON
- SECURITY KEY (ON/OFF)
- ACCELERATION AND SPEED REGULATION FOR THE COFFIN TO BE INTRODUCED
- HANDLES FOR LATERAL AND POSTERIOR MOVEMENTS
- MANUAL MECHANISM TO INTRODUCE THE COFFIN IN CASE OF POWER BLACKOUT
- HANDBOOK PROVIDED IN THE CUSTOMER'S NATIVE LANGUAGE
- EU DECLARATION OF CONFORMITY

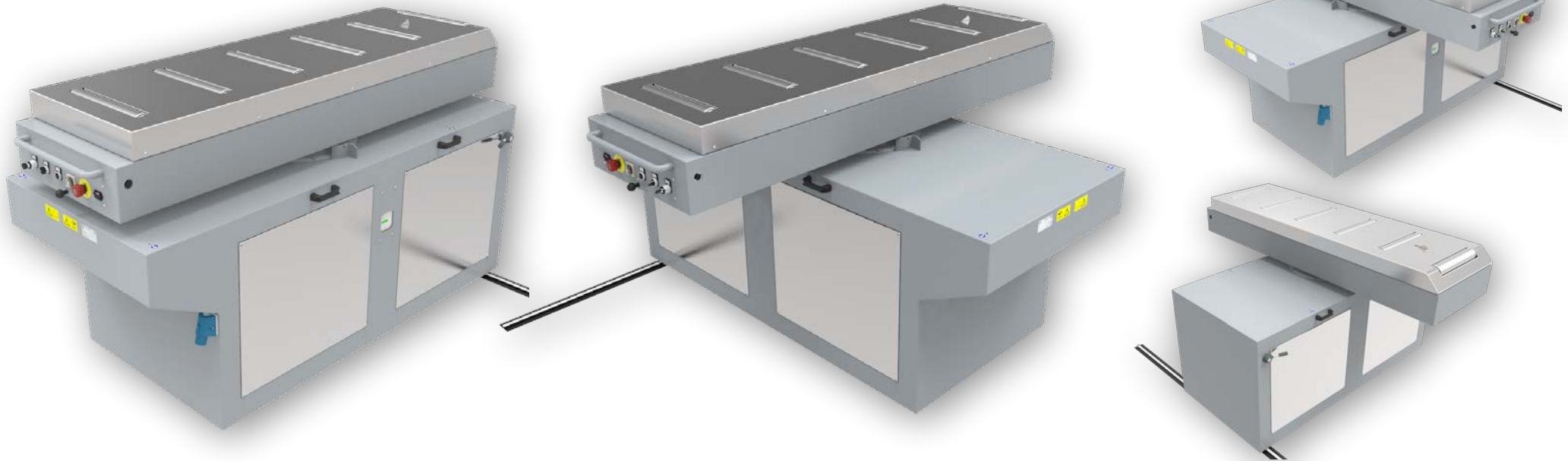


EXW AUTOLOADER 005R - 180° ROTATING LOADING BRIDGE (+90° / 0° / -90°)**CUSTOMER'S OPTIONAL CHOICES:**

- LATERAL TRANSFER ON RAIL OR LOCKABLE WHEELS
- 180° BRIDGE ROTATION (+90° / 0° / -90°)
- ELECTRIC POWER SUPPLY (110V-240V)
- RECHARGEABLE BATTERIES ALIMENTATION (24V 80AH (20H)) WITH HIGH FREQUENCY CHARGER
- COMMAND ON THE MACHINE ONLY
- COMMAND ON THE MACHINE AND THROUGH REMOTE CONTROL
- COMMAND ON THE OVEN, ON SEPARATE PLC OR TABLET
- CUSTOMIZED HEIGHT, DEPENDING ON THE OVEN
- ADDITIONAL POSSIBILITY OF HEIGHT REGULATION (+ - 30mm)
- MEASURING COFFIN WEIGHT SYSTEM, BEFORE CREMATION

STANDARD EQUIPMENT:

- MAXIMUM WEIGHT = 300KG
- BRIDGE LENGTH 630mm - MAXIMUM DIMENSIONS = 1'030mm x 2'190mm
- OVEN PENETRATION: 1'400mm (ADDITIONAL +30mm)
- SAFETY STOP BUTTON
- SECURITY KEY (ON/OFF)
- ACCELERATION AND SPEED REGULATION FOR THE COFFIN TO BE INTRODUCED
- HANDLES FOR LATERAL AND POSTERIOR MOVEMENTS
- HANDLES FOR BRIDGE LATERAL MOVEMENTS
- MANUAL MECHANISM TO INTRODUCE THE COFFIN IN CASE OF POWER BLACKOUT
- HANDBOOK PROVIDED IN THE CUSTOMER'S NATIVE LANGUAGE
- EU DECLARATION OF CONFORMITY



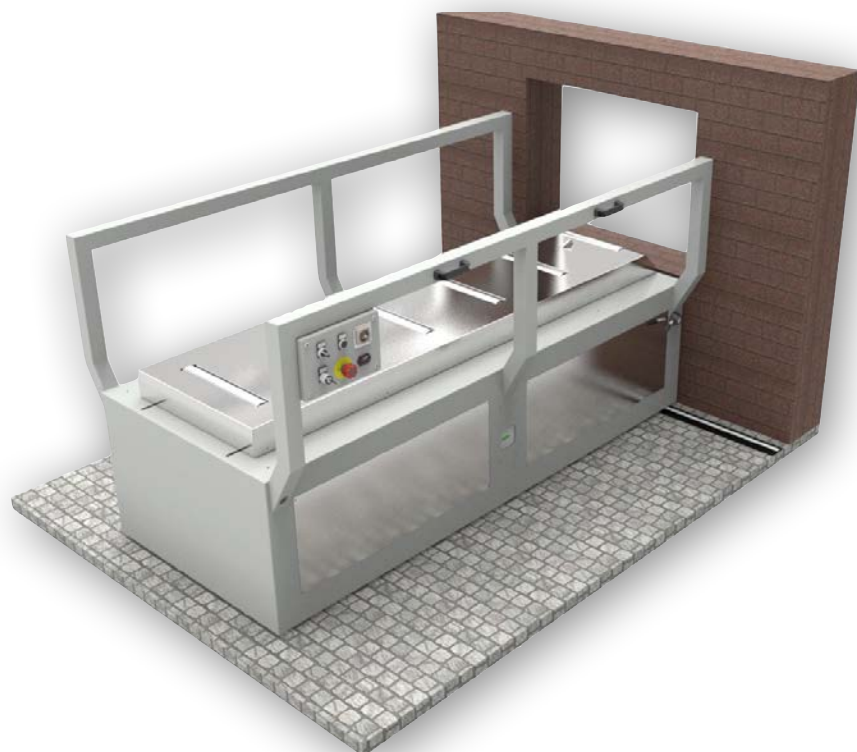
EXW AUTOLOADER 006B - WITH LATERAL PROTECTION

CUSTOMER'S OPTIONAL CHOICES:

- LINEAR TRANSFER ON RAIL WITH MANUAL TRACTION
- ELECTRIC POWER SUPPLY (110V-240V)
- LATERAL PROTECTION
- RECHARGEABLE BATTERIES ALIMENTATION (24V 80AH (20H)) WITH HIGH FREQUENCY CHARGER
- COMMAND ON THE MACHINE
- COMMAND ON THE MACHINE AND THROUGH REMOTE CONTROL
- COMMAND ON THE OVEN, ON SEPARATE PLC OR TABLET
- CUSTOMIZED HEIGHT, DEPENDING ON THE OVEN
- ADDITIONAL POSSIBILITY OF HEIGHT REGULATION (+ - 30mm)

STANDARD EQUIPMENT:

- MAXIMUM WEIGHT = 300KG
- BRIDGE LENGTH 630mm - MAXIMUM DIMENSIONS = 1'200mm x 2'190mm
- OVEN PENETRATION: 1'400mm (ADDITIONAL +30mm)
- SAFETY STOP BUTTON
- SECURITY KEY (ON/OFF)
- ACCELERATION AND SPEED REGULATION FOR THE COFFIN TO BE INTRODUCED
- HANDLES FOR LATERAL AND POSTERIOR MOVEMENTS
- MANUAL MECHANISM TO INTRODUCE THE COFFIN IN CASE OF POWER BLACKOUT
- HANDBOOK PROVIDED IN THE CUSTOMER'S NATIVE LANGUAGE
- EU DECLARATION OF CONFORMITY



EXW AUTOLOADER 007E - LOADER FOR TWO OR MORE OVEN HEIGHTS IN THE SAME CREMATORIUM**CUSTOMER'S OPTIONAL CHOICES:**

- LINEAR TRANSFER ON RAIL WITH MANUAL TRACTION
- ELECTRIC POWER SUPPLY (110V-240V)
- RECHARGEABLE BATTERIES ALIMENTATION (24V 80AH (20H)) WITH HIGH FREQUENCY CHARGER
- COMMAND ON THE MACHINE ONLY
- COMMAND ON THE MACHINE AND THROUGH REMOTE CONTROL
- COMMAND ON THE OVEN, ON SEPARATE PLC OR TABLET
- CUSTOMIZED HEIGHTS, FOR TWO OR MORE OVEN
- ADDITIONAL POSSIBILITY OF HEIGHT REGULATION (+ - 30mm)
- MEASURING COFFIN WEIGHT SYSTEM, BEFORE CREMATION

STANDARD EQUIPMENT:

- MAXIMUM WEIGHT = 300KG
- BRIDGE LENGHT 630mm - MAXIMUM DIMENSIONS = 1'000mm x 2'350mm
- OVEN PENETRATION: 1'400mm (ADDITIONAL +30mm)
- SAFETY STOP BUTTON
- SECURITY KEY (ON/OFF)
- ACCELERATION AND SPEED REGULATION FOR THE COFFIN TO BE INTRODUCED
- HANDLES FOR LATERAL AND POSTERIOR MOVEMENTS
- MANUAL MECHANISM TO INTRODUCE THE COFFIN IN CASE OF POWER BLACKOUT
- HANDBOOK PROVIDED IN THE CUSTOMER'S NATIVE LANGUAGE
- EU DECLARATION OF CONFORMITY



EXW AUTOLOADER 008R - 180° ROTATING BRIDGE +90° / 0° / -90° WITH ELECTRIC DRIVE ON RAILS

CUSTOMER'S OPTIONAL CHOICES:

- LINEAR TRANSFER ON RAILS WITH ELECTRIC DRIVE
- COFFINS LOADING WITH ELECTRICAL DRIVE
- ELECTRIC POWER SUPPLY (110V-240V)
- 180° BRIDGE ROTATION (+90° / 0° / -90°)
- RECHARGEABLE BATTERIES ALIMENTATION (24V 80AH (20H)) WITH HIGH FREQUENCY CHARGER
- COMMAND ON THE MACHINE
- COMMAND ON THE MACHINE AND THROUGH REMOTE CONTROL
- COMMAND ON THE OVEN, ON SEPARATE PLC OR TABLET
- CUSTOMIZED HEIGHTS, DEPENDING ON THE OVEN
- ADDITIONAL POSSIBILITY OF HEIGHT CHANGING (+ - 30mm)
- MEASURING COFFIN WEIGHT SYSTEM, BEFORE CREMATION

STANDARD EQUIPMENT:

- MAXIMUM WEIGHT = 300KG
- BRIDGE LENGTH 630mm - MAXIMUM DIMENSIONS = 900mm x 2'190mm
- OVEN PENETRATION: 1'400mm (ADDITIONAL +30mm)
- SAFETY STOP BUTTON
- SECURITY KEY (ON/OFF)
- ACCELERATION AND SPEED REGULATION FOR THE COFFIN TO BE INTRODUCED
- HANDLES FOR BRIDGE LATERAL MOVEMENTS
- MANUAL MECHANISM TO INTRODUCE THE COFFIN IN CASE OF POWER BLACKOUT
- HANDBOOK PROVIDED IN THE CUSTOMER'S NATIVE LANGUAGE
- EU DECLARATION OF CONFORMITY



EXW RADIOLOADER
RADIO-CONTROL



EXW AUTOLOADER 009F - LOW LOADER IN FIXED POSITION, OPERATED BY OVEN "CONTROLLER" OR RADIO-CONTROL

CUSTOMER'S OPTIONAL CHOICES:

- FIXED POSITION INTRODUCER (*BUILT INTO THE GROUND*)
- ELECTRIC POWER SUPPLY (*110V-240V*)
- RECHARGEABLE BATTERIES ALIMENTATION (*24V 80AH (20H)*) WITH HIGH FREQUENCY CHARGER
- COMMAND ON THE MACHINE
- COMMAND ON THE MACHINE AND THROUGH REMOTE CONTROL
- COMMAND ON THE OVEN, ON SEPARATE PLC OR TABLET
- HEIGHT AROUND 210mm FROM THE FLOOR
- ADDITIONAL POSSIBILITY OF HEIGHT CHANGING (*+ - 30mm*)
- MEASURING COFFIN WEIGHT SYSTEM, BEFORE CREMATION

STANDARD EQUIPMENT:

- MAXIMUM WEIGHT = 300KG
- BRIDGE LENGHT 630mm - MAXIMUM DIMENSIONS 820mm x 2'820mm x 320mm
- OVEN PENETRATION: 1'400mm (*ADDITIONAL +30mm*)
- SAFETY STOP BUTTON
- SECURITY KEY (*ON/OFF*)
- ACCELERATION AND SPEED REGULATION FOR THE COFFIN TO BE INTRODUCED
- MANUAL MECHANISM TO INTRODUCE THE COFFIN IN CASE OF POWER BLACKOUT
- HANDBOOK PROVIDED IN THE CUSTOMER'S NATIVE LANGUAGE
- EU DECLARATION OF CONFORMITY



EXW AUTOLOADER 010A - TIGHT BRIDGE TO LOAD COFFINS EVEN WITH FEET

CUSTOMER'S OPTIONAL CHOICES:

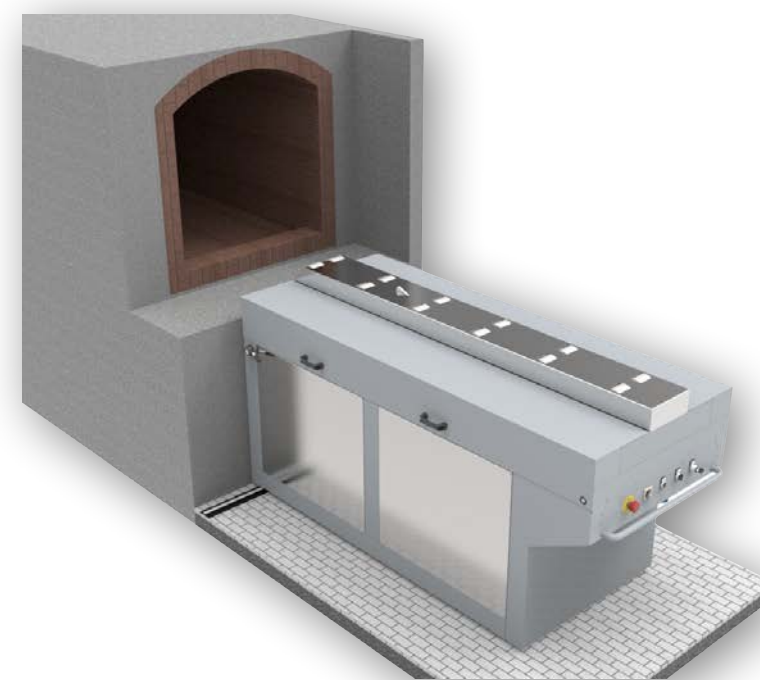
- LATERAL TRANSFER ON RAIL OR LOCKABLE WHEELS
- ELECTRIC POWER SUPPLY (110V-240V)
- RECHARGEABLE BATTERIES ALIMENTATION (24V 80AH (20H)) WITH HIGH FREQUENCY CHARGER
- COMMAND ON THE MACHINE
- COMMAND ON THE MACHINE AND THROUGH REMOTE CONTROL
- COMMAND ON THE OVEN, ON SEPARATE PLC OR TABLET
- CUSTOMIZED HEIGHT, DEPENDING ON THE OVEN
- ADDITIONAL POSSIBILITY OF HEIGHT REGULATION (+ - 30mm)
- MEASURING COFFIN WEIGHT SYSTEM, BEFORE CREMATION

STANDARD EQUIPMENT:

- MAXIMUM WEIGHT = 300KG
- BRIDGE LENGTH 250mm - MAXIMUM DIMENSIONS 990mm x 2'260mm
- OVEN PENETRATION: 1'400mm (ADDITIONAL +30mm)
- SAFETY STOP BUTTON
- SECURITY KEY (ON/OFF)
- ACCELERATION AND SPEED REGULATION FOR THE COFFIN TO BE INTRODUCED
- HANDLES FOR LATERAL MOVEMENTS
- MANUAL MECHANISM TO INTRODUCE THE COFFIN IN CASE OF POWER BLACKOUT
- HANDBOOK PROVIDED IN THE CUSTOMER'S NATIVE LANGUAGE
- EU DECLARATION OF CONFORMITY



**IT LOADS COFFINS WITH FEET, NO NEED
TO TAKE THEM OFF PRIOR CREMATION**



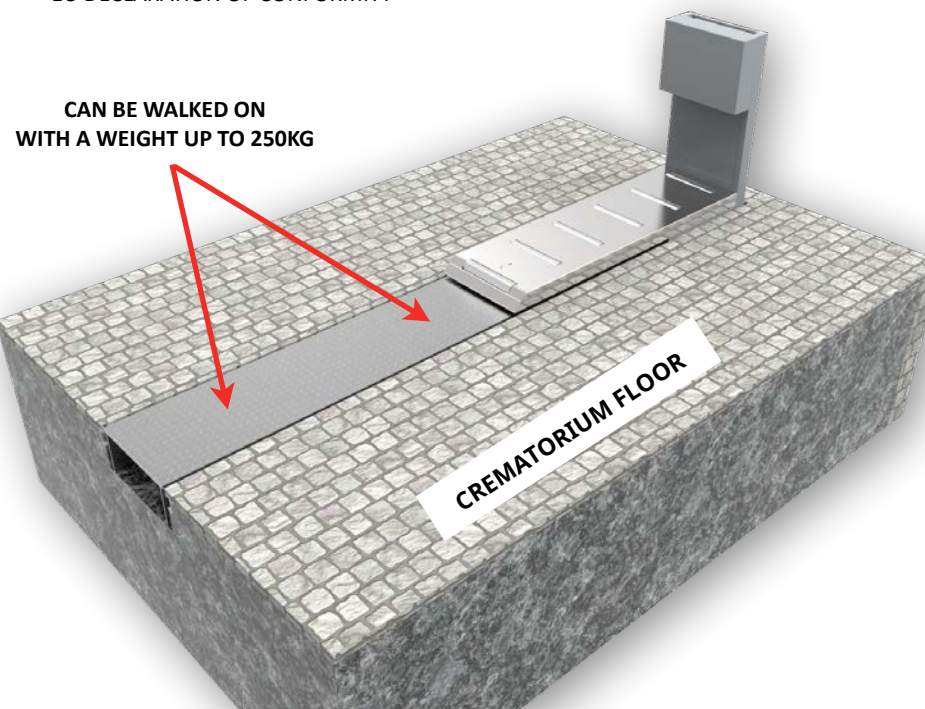
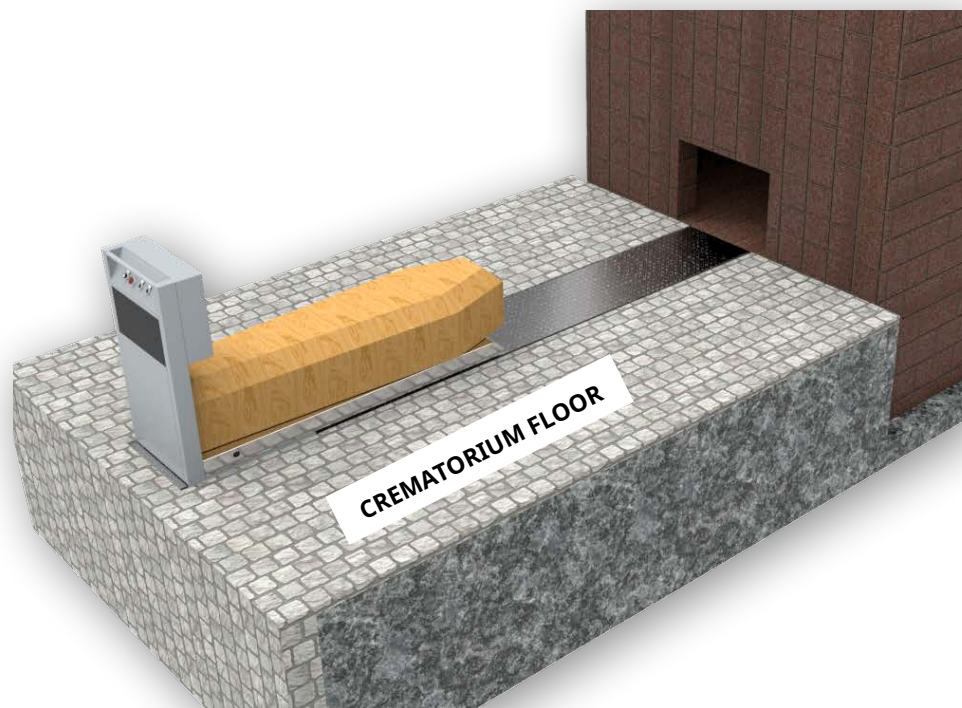
EXW AUTOLOADER 0011M - LOW LOADER WITH ELECTRIC OR MANUAL ADVANCEMENT PUSH

CUSTOMER'S OPTIONAL CHOICES:

- FIXED POSITION INTRODUCER (*BUILT IN THE GROUND*)
- ELECTRIC POWER SUPPLY (*110V-240V*)
- RECHARGEABLE BATTERIES ALIMENTATION (*24V 80AH (20H)*) WITH HIGH FREQUENCY CHARGER
- COMMAND ON THE MACHINE
- COMMAND ON THE MACHINE AND THROUGH REMOTE CONTROL
- COMMAND ON THE OVEN, ON SEPARATE PLC OR TABLET
- HEIGHT AROUND +120mm FROM THE FLOOR
- ADDITIONAL POSSIBILITY OF HEIGHT CHANGING (*+ - 30mm*)
- MEASURING COFFIN WEIGHT SYSTEM, BEFORE CREMATION

STANDARD EQUIPMENT:

- MAXIMUM WEIGHT = 300KG
- BRIDGE LENGTH 630mm - MAXIMUM DIMENSIONS 820mm x 343mm
- OVEN PENETRATION: 1'400mm (*ADDITIONAL +30mm*)
- SAFETY STOP BUTTON
- SECURITY KEY (*ON/OFF*)
- ACCELERATION AND SPEED REGULATION FOR THE COFFIN TO BE INTRODUCED
- HANDLES FOR LINEAR MOVEMENTS
- MANUAL MECHANISM TO INTRODUCE THE COFFIN IN CASE OF POWER BLACKOUT
- HANDBOOK PROVIDED IN THE CUSTOMER'S NATIVE LANGUAGE
- EU DECLARATION OF CONFORMITY

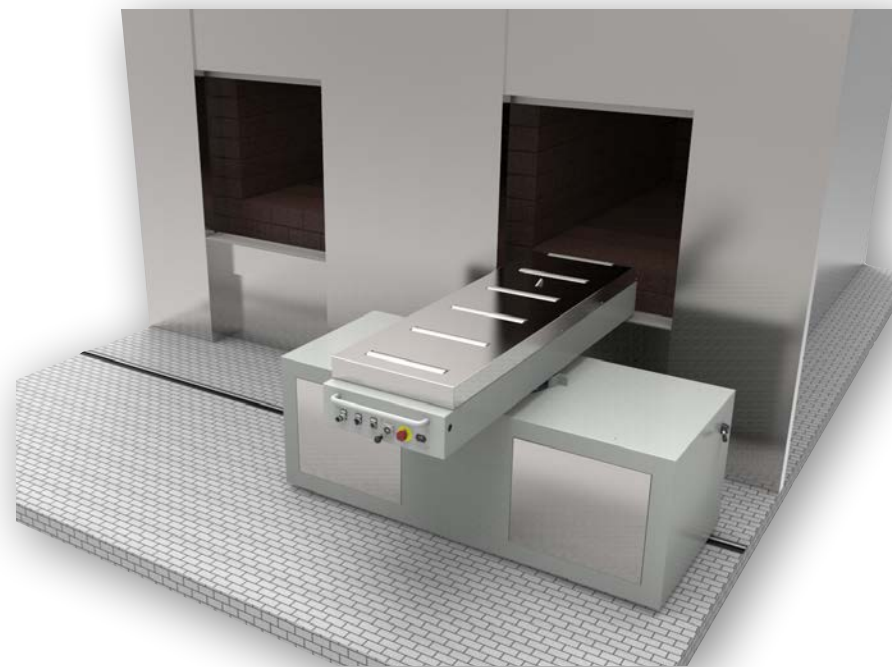


EXW AUTOLOADER 013R - 180° ROTATING BRIDGE +90° / 0° / -90° WITH ELECTRIC POWER PROTECTIONS BY NYLON/STEEL CABLE CHAIN**CUSTOMER'S OPTIONAL CHOICES:**

- LATERAL TRANSFER ON RAILS
- ELECTRIC POWER SUPPLY (110V-240V)
- RECHARGEABLE BATTERIES ALIMENTATION (24V 80AH (20H)) WITH HIGH FREQUENCY CHARGER
- 180° BRIDGE ROTATION (+90° / 0° / -90°)
- COMMAND ON THE MACHINE
- COMMAND ON THE OVEN, ON SEPARATE PLC OR TABLET
- CUSTOMIZED HEIGHT, DEPENDING ON THE OVEN
- ADDITIONAL POSSIBILITY OF HEIGHT CHANGING (+ - 30mm)
- ELECTRIC POWER PROTECTIONS BY NYLON/STEEL CABLE CHAIN
- MEASURING COFFIN WEIGHT SYSTEM, BEFORE CREMATION

STANDARD EQUIPMENT:

- MAXIMUM WEIGHT = 300KG
- BRIDGE LENGTH 630mm - MAXIMUM DIMENSIONS 900mm x 2'190mm
- OVEN PENETRATION: 1'400mm (ADDITIONAL +30mm)
- SAFETY STOP BUTTON (ON THE REMOTE CONTROL)
- SECURITY KEY (ON/OFF)
- ACCELERATION AND SPEED REGULATION FOR THE COFFIN TO BE INTRODUCED
- HANDLES FOR LATERAL MOVEMENTS
- HANDLES FOR BRIDGE LATERAL MOVEMENTS
- MANUAL MECHANISM TO INTRODUCE THE COFFIN IN CASE OF POWER BLACKOUT
- HANDBOOK PROVIDED IN THE CUSTOMER'S NATIVE LANGUAGE
- EU DECLARATION OF CONFORMITY



EXW AUTOLOADER 014A - ELECTRIC POWER PROTECTIONS BY NYLON/STEEL CABLE CHAIN**CUSTOMER'S OPTIONAL CHOICES:**

- LATERAL TRANSFER ON RAILS
- ELECTRIC POWER SUPPLY (110V-240V)
- RECHARGEABLE BATTERIES ALIMENTATION (24V 80AH (20H)) WITH HIGH FREQUENCY CHARGER
- COMMAND ON THE MACHINE
- COMMAND ON THE OVEN, ON SEPARATE PLC OR TABLET
- CUSTOMIZED HEIGHT, DEPENDING ON THE OVEN
- ADDITIONAL POSSIBILITY OF HEIGHT CHANGING (+ - 30mm)
- ELECTRIC POWER PROTECTIONS BY NYLON/STEEL CABLE CHAIN
- MEASURING COFFIN WEIGHT SYSTEM, BEFORE CREMATION

STANDARD EQUIPMENT:

- MAXIMUM WEIGHT = 300KG
- BRIDGE LENGHT 630mm - MAXIMUM DIMENSIONS 900mm x 2'190mm
- OVEN PENETRATION: 1'400mm (ADDITIONAL +30mm)
- SAFETY STOP BUTTON (ON THE REMOTE CONTROL)
- SECURITY KEY (ON/OFF)
- ACCELERATION AND SPEED REGULATION FOR THE COFFIN TO BE INTRODUCED
- HANDLES FOR LATERAL MOVEMENTS
- MANUAL MECHANISM TO INTRODUCE THE COFFIN IN CASE OF POWER BLACKOUT
- HANDBOOK PROVIDED IN THE CUSTOMER'S NATIVE LANGUAGE
- EU DECLARATION OF CONFORMITY

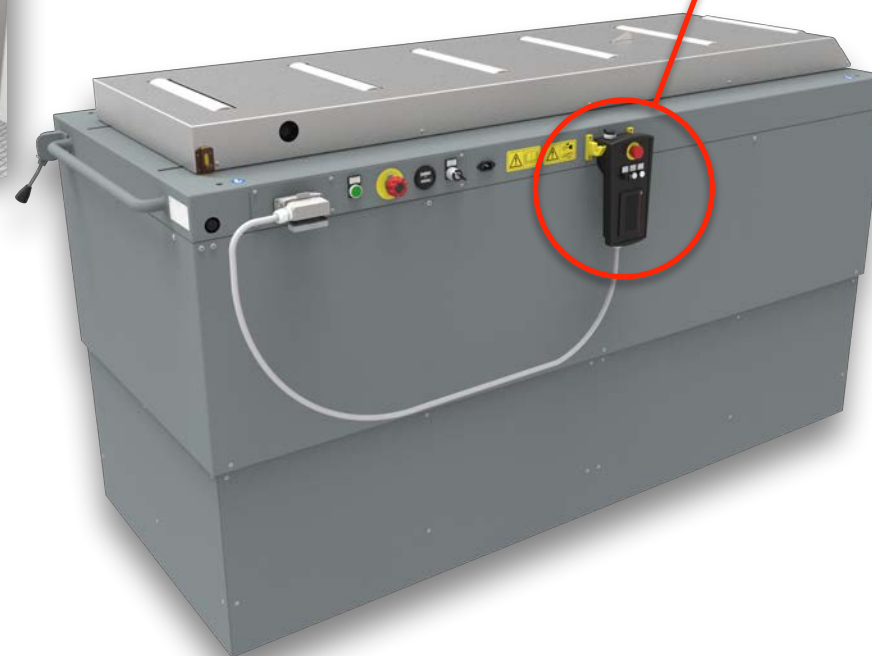


EXW AUTOLOADER 017E - ELECTRIC DRIVE WITH 90° ROTATION, SERVES TWO DIFFERENT OVENS**CUSTOMER'S OPTIONAL CHOICES:**

- LATERAL TRANSFER ON RAILS WITH ELECTRIC DRIVE
- ELECTRIC POWER SUPPLY (110V-240V)
- RECHARGEABLE BATTERIES ALIMENTATION (24V 80AH (20H)) WITH H. F. CHARGER
- COMMAND ON THE MACHINE
- COMMAND ON THE OVEN, ON SEPARATE PLC OR TABLET
- CUSTOMIZED HEIGHT, DEPENDING ON THE OVEN
- ADDITIONAL POSSIBILITY OF HEIGHT REGULATION (+ - 30mm)
- MEASURING COFFIN WEIGHT SYSTEM, BEFORE CREMATION

STANDARD EQUIPMENT:

- MAXIMUM WEIGHT = 300KG
- BRIDGE LENGTH 630mm - MAXIMUM DIMENSIONS 950mm x 2'225mm
- OVEN PENETRATION: 1'400mm (ADDITIONAL +30mm)
- SAFETY STOP BUTTON (ON THE TOUCH SCREEN REMOTE CONTROL)
- SECURITY KEY (ON/OFF)
- ACCELERATION AND SPEED REGULATION FOR THE COFFIN TO BE INTRODUCED
- MANUAL MECHANISM TO INTRODUCE THE COFFIN IN CASE OF POWER BLACKOUT
- HANDBOOK PROVIDED IN THE CUSTOMER'S NATIVE LANGUAGE
- EU DECLARATION OF CONFORMITY



EXW AUTOLOADER 018S - PUSH SYSTEM

CUSTOMER'S OPTIONAL CHOICES:

- LATERAL TRANSFER ON RAILS
- ELECTRIC POWER SUPPLY (110V-240V)
- RECHARGEABLE BATTERIES ALIMENTATION (24V 80AH (20H)) WITH HIGH FREQUENCY CHARGER
- COMMAND ON THE MACHINE
- COMMAND ON THE OVEN, ON SEPARATE PLC OR TABLET
- CUSTOMIZED HEIGHT, DEPENDING ON THE OVEN
- ADDITIONAL POSSIBILITY OF HEIGHT REGULATION (+ - 30mm)

STANDARD EQUIPMENT:

- MAXIMUM WEIGHT = 300KG
- BRIDGE LENGHT 630mm - MAXIMUM DIMENSIONS 900mm x 3'070mm
- OVEN PENETRATION: 2'600mm (ADDITIONAL +30MM)
- SAFETY STOP BUTTON (ON THE TOUCH SCREEN REMOTE CONTROL)
- SECURITY KEY (ON/OFF)
- ACCELERATION AND SPEED REGULATION FOR THE COFFIN TO BE INTRODUCED
- MANUAL MECHANISM TO INTRODUCE THE COFFIN IN CASE OF POWER BLACKOUT
- HANDBOOK PROVIDED IN THE CUSTOMER'S NATIVE LANGUAGE
- EU DECLARATION OF CONFORMITY

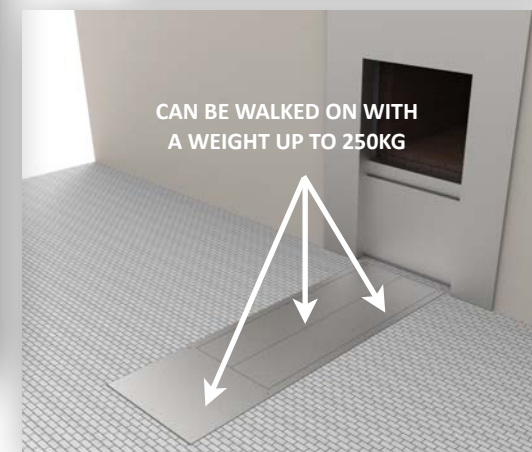
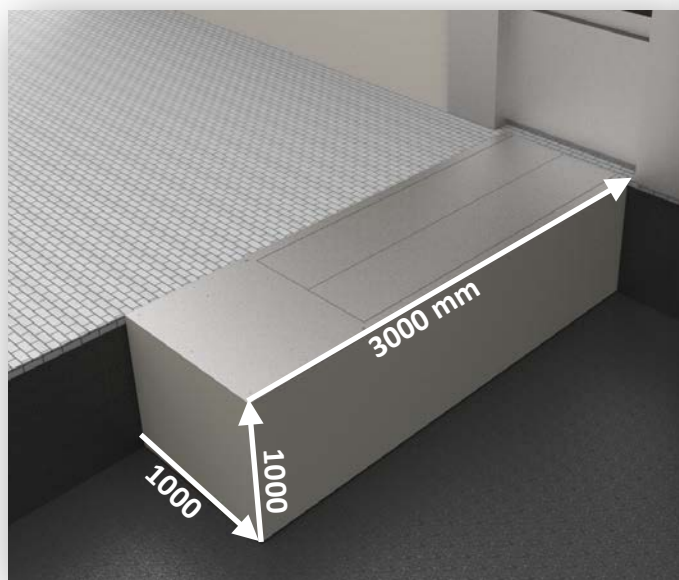


EXW AUTOLOADER 017F - LOADER FULLY HIDDEN IN THE GROUND WITH TIGHT BRIDGE TO LOAD COFFINS EVEN WITH FEET**CUSTOMER'S OPTIONAL CHOICES:**

- FIXED POSITION INTRODUCER (*BUILT IN THE GROUND*)
- ELECTRIC POWER SUPPLY (*110V-240V*)
- RECHARGEABLE BATTERIES ALIMENTATION (*24V 80AH (20H)*) WITH HIGH FREQUENCY CHARGER
- COMMAND ON THE MACHINE AND THROUGH REMOTE CONTROL
- COMMAND ON THE OVEN, ON SEPARATE PLC OR TABLET
- HEIGHT WHEN THE MACHINE IS NOT WORKING: 000mm FROM THE GROUND
- OPERATIVE HEIGHTS: FROM +450mm TO +1'200mm FROM THE FLOOR
- ADDITIONAL POSSIBILITY OF HEIGHT CHANGING (*+ - 30mm*)
- MEASURING COFFIN WEIGHT SYSTEM, BEFORE CREMATION

STANDARD EQUIPMENT:

- MAXIMUM WEIGHT = 300KG
- BRIDGE LENGTH 250mm - MAXIMUM DIMENSIONS 1'000mm x 1'000mm x 3'000mm
- OVEN PENETRATION: 1'400mm (*ADDITIONAL +30mm*)
- SAFETY STOP BUTTON (*ON THE REMOTE CONTROL*)
- SECURITY KEY (*ON/OFF*)
- ACCELERATION AND SPEED REGULATION FOR THE COFFIN TO BE INTRODUCED
- MANUAL MECHANISM TO INTRODUCE THE COFFIN IN CASE OF POWER BLACKOUT
- HANDBOOK PROVIDED IN THE CUSTOMER'S NATIVE LANGUAGE
- EU DECLARATION OF CONFORMITY

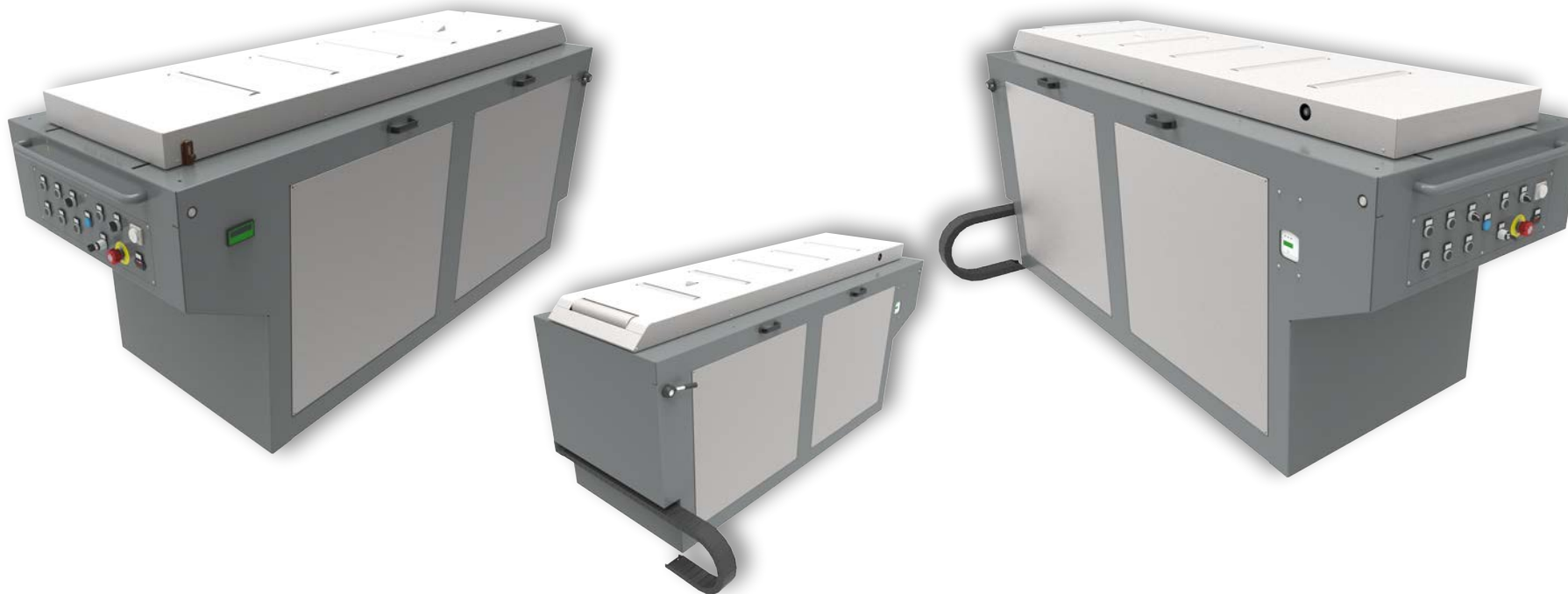


EXW AUTOLOADER 019A - EXTRA-LONG INTRODUCER BRIDGE (+1'700mm)**CUSTOMER'S OPTIONAL CHOICES:**

- LATERAL TRANSFER ON RAILS
- ELECTRIC POWER SUPPLY (110V-240V)
- RECHARGEABLE BATTERIES ALIMENTATION (24V 80AH (20H)) WITH HIGH FREQUENCY CHARGER
- COMMAND ON THE MACHINE
- COMMAND ON THE OVEN, ON SEPARATE PLC OR TABLET
- CUSTOMIZED HEIGHT, DEPENDING ON THE OVEN
- ADDITIONAL POSSIBILITY OF HEIGHT REGULATION (+ - 30mm)
- ELECTRIC POWER PROTECTIONS BY NYLON/STEEL CABLE CHAIN
- MEASURING COFFIN WEIGHT SYSTEM, BEFORE CREMATION

STANDARD EQUIPMENT:

- MAXIMUM WEIGHT = 300KG
- BRIDGE LENGHT 630mm - MAXIMUM DIMENSIONS 900mm x 2'555mm
- OVEN PENETRATION: 1'700mm (ADDITIONAL +30mm)
- SAFETY STOP BUTTON (ON THE TOUCH SCREEN REMOTE CONTROL)
- SECURITY KEY (ON/OFF)
- ACCELERATION AND SPEED REGULATION FOR THE COFFIN TO BE INTRODUCED
- MANUAL MECHANISM TO INTRODUCE THE COFFIN IN CASE OF POWER BLACKOUT
- HANDBOOK PROVIDED IN THE CUSTOMER'S NATIVE LANGUAGE
- EU DECLARATION OF CONFORMITY



EXW AUTOLOADER 020R-01 - ELECTRIC DRIVE WITH ROTATION ON SITE OPERATED THROUGH REMOTE CONTROL**CUSTOMER'S OPTIONAL CHOICES:**

- ELECTRIC DRIVE FOR TRANSFER ON RAILS
- ELECTRIC POWER SUPPLY (110V-240V)
- RECHARGEABLE BATTERIES ALIMENTATION (24V 80AH (20H)) WITH HIGH FREQUENCY CHARGER
- COMMAND ON THE MACHINE
- COMMAND ON THE OVEN AND THROUGH REMOTE CONTROL
- CUSTOMIZED HEIGHT, DEPENDING ON THE OVEN
- ADDITIONAL POSSIBILITY OF HEIGHT REGULATION (+ - 30mm)
- MANUAL AUTOLOADER ROTATION ON SITE (+90° / 0° / -90°) CHOSEN BY CUSTOMERS
- MEASURING COFFIN WEIGHT SYSTEM, BEFORE CREMATION

STANDARD EQUIPMENT:

- MAXIMUM WEIGHT = 300KG
- BRIDGE LENGTH 630mm - MAXIMUM DIMENSIONS 900mm x 2'255mm
- OVEN PENETRATION: 1'400mm (ADDITIONAL +30mm)
- SAFETY STOP BUTTON (ON THE TOUCH SCREEN REMOTE CONTROL)
- SECURITY KEY (ON/OFF)
- ACCELERATION AND SPEED REGULATION FOR THE COFFIN TO BE INTRODUCED
- MANUAL MECHANISM TO INTRODUCE THE COFFIN IN CASE OF POWER BLACKOUT
- HANDBOOK PROVIDED IN THE CUSTOMER'S NATIVE LANGUAGE
- EU DECLARATION OF CONFORMITY



EXW RADIOLOADER
RADIO-CONTROL

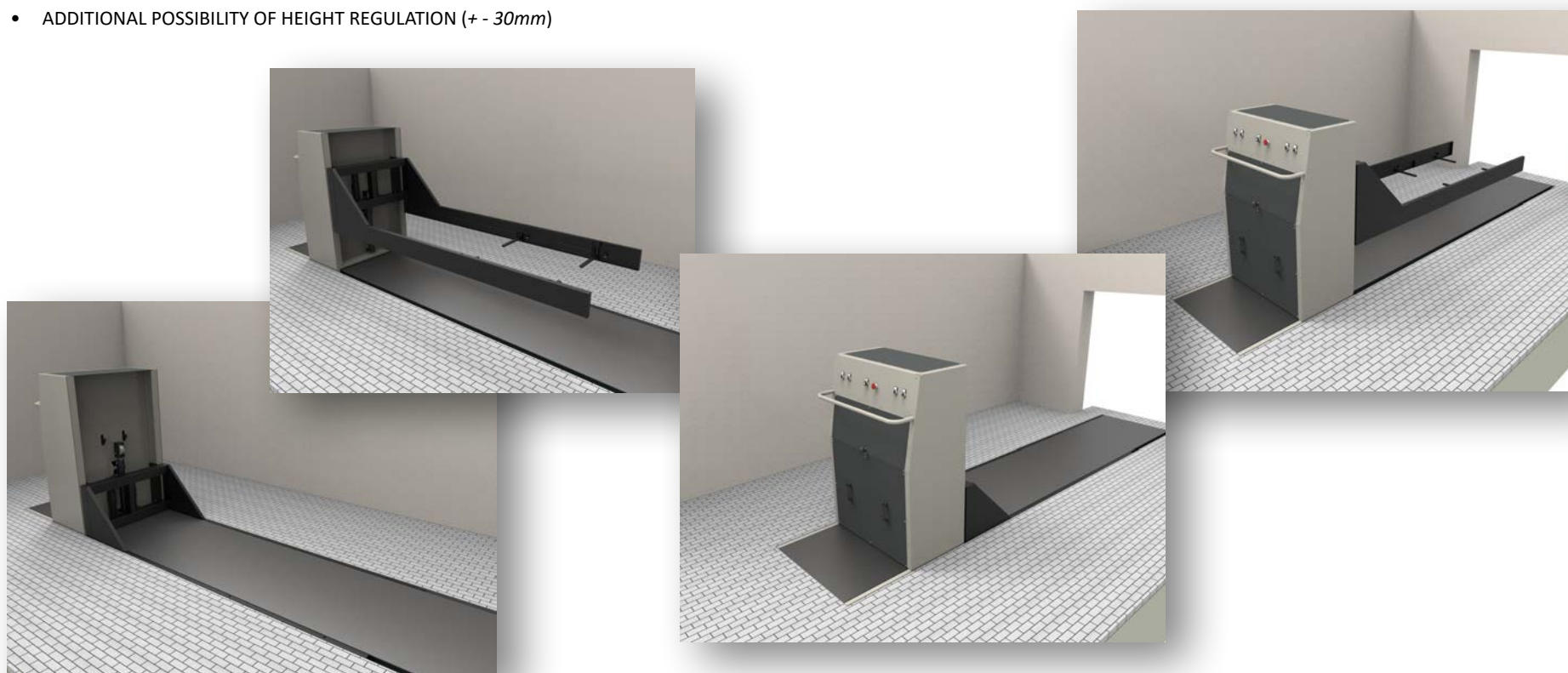


EW AUTOLOADER CS 03-08-SP - MANUAL PUSH**CUSTOMER'S OPTIONAL CHOICES:**

- MANUAL PUSH FOR TRANSFER ON RAILS
- ELECTRIC DRIVE FOR TRANSFER ON RAILS
- ELECTRIC CURRENT ALIMENTATION (110V-240V)
- RECHARGEABLE BATTERIES ALIMENTATION (24V 80AH (20H)) WITH HIGH FREQUENCY CHARGER
- COMMAND ON THE MACHINE
- COMMAND ON THE OVEN AND THROUGH REMOTE CONTROL
- CUSTOMIZED HEIGHT, DEPENDING ON THE OVEN
- ADDITIONAL POSSIBILITY OF HEIGHT REGULATION (+ - 30mm)

STANDARD EQUIPMENT:

- MAXIMUM WEIGHT = 300KG
- BRIDGE LENGHT 900mm - MAXIMUM DIMENSIONS 1'010mm x 4'500mm
- SAFETY STOP BUTTON (ON THE TOUCH SCREEN REMOTE CONTROL)
- SECURITY KEY (ON/OFF)
- HANDBOOK PROVIDED IN THE CUSTOMER'S NATIVE LANGUAGE
- EU DECLARATION OF CONFORMITY



EXW AUTOLOADER 003E-03 - ELECTRICAL TRACTION LOADER SERVES MORE OVENS WITH DIFFERENT "MOUTH HEIGHTS"**CUSTOMER'S OPTIONAL CHOICES:**

- ELECTRIC DRIVE FOR TRANSFER
- ELECTRIC POWER SUPPLY (110V-240V)
- RECHARGEABLE BATTERIES ALIMENTATION (24V 80AH (20H)) WITH HIGH FREQUENCY CHARGER
- COMMAND ON THE MACHINE
- COMMAND ON THE OVEN AND THROUGH REMOTE CONTROL
- DIFFERENT CUSTOMIZED HEIGHTS, DEPENDING ON THE OVENS
- ADDITIONAL POSSIBILITY OF HEIGHT REGULATION (+ - 30mm)

STANDARD EQUIPMENT:

- MAXIMUM WEIGHT = 300KG
- BRIDGE LENGHT 630mm - MAXIMUM DIMENSIONS 900mm x 2'500mm
- OVEN PENETRATION: 1'400mm (ADDITIONAL +30mm)
- SAFETY STOP BUTTON (ON THE TOUCH SCREEN REMOTE CONTROL)
- SECURITY KEY (ON/OFF)
- ACCELERATION AND SPEED REGULATION FOR THE COFFIN TO BE INTRODUCED
- MANUAL MECHANISM TO INTRODUCE THE COFFIN IN CASE OF POWER BLACKOUT
- HANDBOOK PROVIDED IN THE CUSTOMER'S NATIVE LANGUAGE
- EU DECLARATION OF CONFORMITY



TROLLEY - ASHES PROCESSOR - ACCESSORIES

TROLLEY - TO LOAD COFFINS MANUALLY OR BY ELECTRICAL DRIVE
ALL OUR TROLLEYS FOR COFFINS TRANSPORT ARE BUILT IN FULL COMPLIANCE WITH THE C.E. REGULATIONS

—
ASHES PROCESSOR - EXW PRO-CEN CRD 001S "HIGH SPEED" ASPIRATION
3 MINUTES GAP BETWEEN CREMATION AND ASHES DELIVERY - AUTOMATIC CYCLE FOR ASHES-METAL SEPARATION



EXW TROLLEY ES 03/18 SP



EXW PRO-CEN CRD 001S "HIGH SPEED" ASPIRATION



EXW TROLLEY 001



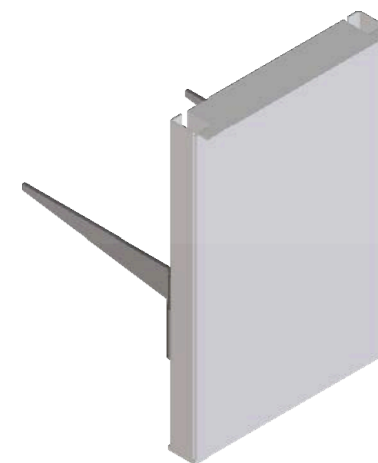
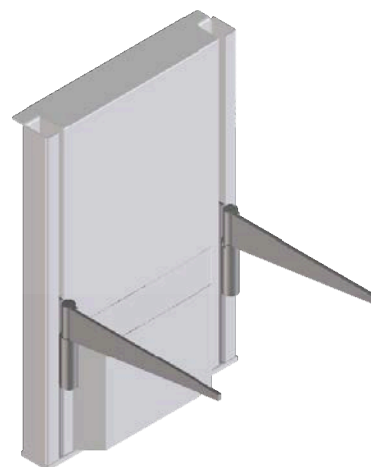
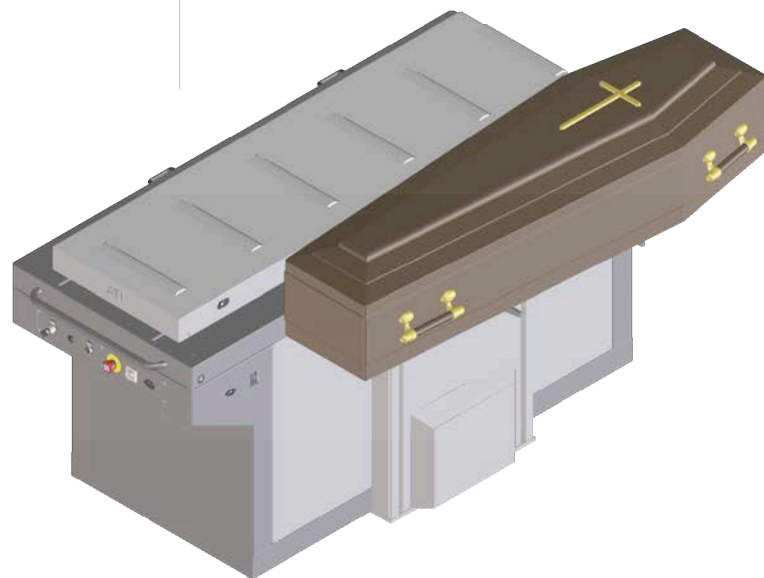
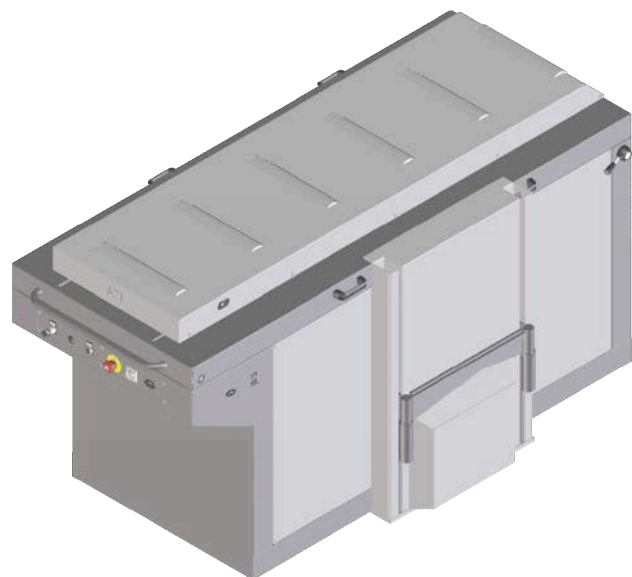
EXW TROLLEY ES 03/18 SP

MAX LOAD = 300KG - OPERATING FROM +180mm TO +1'900mm - ELECTRICAL DRIVE FOR COFFINS LOADING/UNLOADING, MOVING AND LIFTING



EXW DSI 03/12.2

SIDE LIFTER - MAX LOAD = 300KG - OPERATING FROM +550mm TO +1'220mm - COFFINS
LIFT WITH ELECTRICAL DRIVE - ARMS OPEN AND CLOSED BY SAFETY SYSTEM



EXW TROLLEY 001 - TROLLEY FOR COFFIN TRANSPORT

TECHNICAL FEATURES

- BUILT IN FULL COMPLIANCE WITH EUROPEAN EU SAFETY STANDARDS
- STEEL STRUCTURE EXTERNALLY FINISHED WITH "DURA-PROTECT" POWDER COATING
- PUSH-BUTTON COMMAND WITH 2-BUTTON "MAN-PRESENT" SELECTOR SWITCH
- SAFETY EMERGENCY BUTTONS
- PERIMETER ANTI-SHEARING SAFETY BELLOW (*INDUSTRIAL STANDARD*)
- STEEL LOADING PLATFORM (*ANTI-SHEARING FAIRING*), WITH 6 IDLER ROLLERS
- MAX LOAD = 200KG
- **DIMENSION**
 - ▶ LENGTH: 2'100mm
 - ▶ WIDTH: 700mm
 - ▶ MINIMUM HEIGHT ABOVE THE LOADING PLANE: 470mm
 - ▶ MAXIMUM HEIGHT ABOVE THE LOADING LEVEL: 1'700mm
- ELECTRO-HYDRAULIC UP/DOWN SYSTEM WITH SECURITY END STOPS
- POWERED BY 24V 64AH BATTERY (20H) WITH BATTERY CHARGER
- FOUR SAFETY WHEELS, ANTI-CRUSH FAIRING
- THE TWO PIVOTING REAR WHEELS ARE EQUIPPED WITH A PARKING BRAKE SYSTEM
- COFFIN LOCKING SYSTEM DURING TRANSPORT



EXW PRO-CEN CRD 001S "HIGH SPEED" ASPIRATION

3 MINUTES GAP BETWEEN CREMATION AND ASHES DELIVERY - AUTOMATIC CYCLE FOR ASHES-METAL SEPARATION

THE MAIN ADVANTAGES OF THE SOLUTION

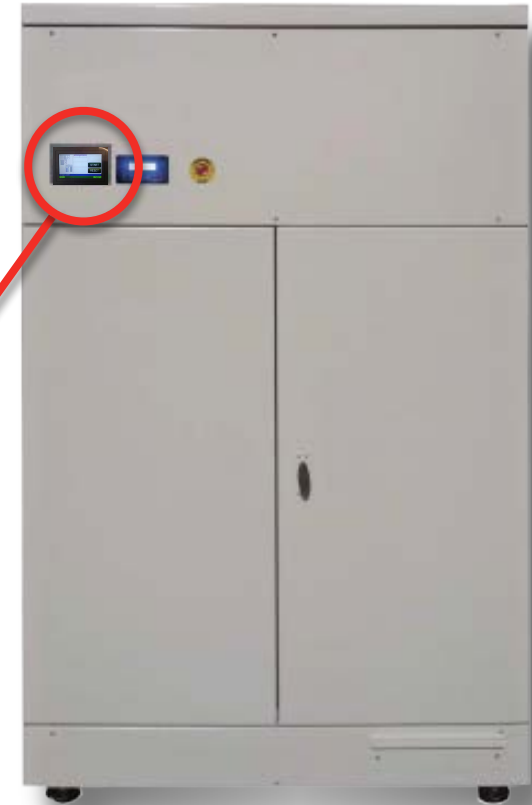
- FULLY AUTOMATIC PROCESS WITH COMPUTERIZED COMMANDS
- FAST ASHES CONVERSION TIME (< 3min)
- EFFECTIVENESS IN THE ASHES TREATMENT
- PREVENTION OF MANUAL ASHES TRANSFERS
- COMPATIBLE WITH ALL TYPES OF ORDINARY DIMENSION URNS
- PRACTICAL DRAWER FOR ASHES REMOVAL WITH CONTROLLED FILTERED AIR
- EASY AND SAFE INTRODUCTION / EXTRACTION OF THE ASHES DRAWER
- AUTOMATIC SEPARATION OF METAL PARTS WITHOUT ANY OPERATOR INTERVENTION
- PROVIDING A CAPILLARY TREATMENT OF THE REMAINS OF THE CREMATION

TECHNICAL FEATURES

- EXTERIOR MADE OF ACOUSTIC PANELS AND COATED SHEETS
- OUTSIDE PAINTED WITH EPOXY PAINT
- FULLY FAIRED
- STAINLESS STEEL AISI-304 MECHANISM
- PNEUMATIC MECHANISM
- BUILT-IN AIR COMPRESSOR
- SIZE (mm): 2'000 x 1'230 x 855
- VOLTAGE: 220V 50/60HZ
- PROCESSING TIME (*PROGRAMMABLE*): 3min
- PROGRAMMING AND CONTROL BY TOUCH SCREEN
- WARRANTY: 1 year
- EU CERTIFICATION



EXW PRO-CEN CRD 001S
"HIGH SPEED" ASHES PROCESSOR



DISKS IN REFRACTORY MATERIAL FOR CREMATION

ROUND DISKS



- NUMERIC CODE ON ONE SIDE (*FROM 00001 TO 99.999*)
- NAME OF THE CREMATORIUM ON THE OTHER SIDE (*MAX 18 LETTERS*)
- SHIPPING BY COURIER IN A SINGLE SOLUTION FOR A SINGLE ORDER
- SENT IN CARTONS OF 100pieces PER BOX, GROUPED ON PALLETS (*BASED ON EACH ORDER QUANTITY*)
- PRODUCTION TIME: 4 weeks
- SHIPPING COSTS WILL BE CALCULATED BASED ON THE ORDER QUANTITIES
- HIGH QUALITY MATERIALS AND EXCELLENT FINISHES

**DISKS IN REFRACTORY MATERIAL FOR CREMATION**

DIVISIBLE HEART



- NUMERIC CODE ON EACH OF THE 2 PARTS OF THE HEART (*FROM 00001 TO 99.999*)
- THE TWO PARTS ARE DIVISIBLE AND EACH ONE WILL HAVE THE SAME IDENTIFICATION NUMBER
- BACK NOT WRITABLE
- SHIPPING BY COURIER IN A SINGLE SOLUTION FOR A SINGLE ORDER
- SENT IN CARTONS OF 100pieces PER BOX, GROUPED ON PALLETS (*BASED ON EACH ORDER QUANTITY*)
- PRODUCTION TIME: 4 weeks
- SHIPPING COSTS WILL BE CALCULATED BASED ON THE ORDER QUANTITIES
- HIGH QUALITY MATERIALS AND EXCELLENT FINISHES

EUROXWAY® SRL

EUROPEAN DISTRIBUTION OF *PROFESSIONAL* SOLUTIONS

EUROXWAY SRL (s.u.) Office: Viale della Repubblica 7/C - 42024 Castelnovo di Sotto (RE) Italy

Part. IVA - Cod. Fiscale (VAT/TVA): IT 01546560358 - Office Phone: +39 0522 682548 - www.euroxway.com - Mail: admin@euroxway.it
Data, and specifications in this catalog are subject to change without notice

CATALOG BUILT: 09/2021