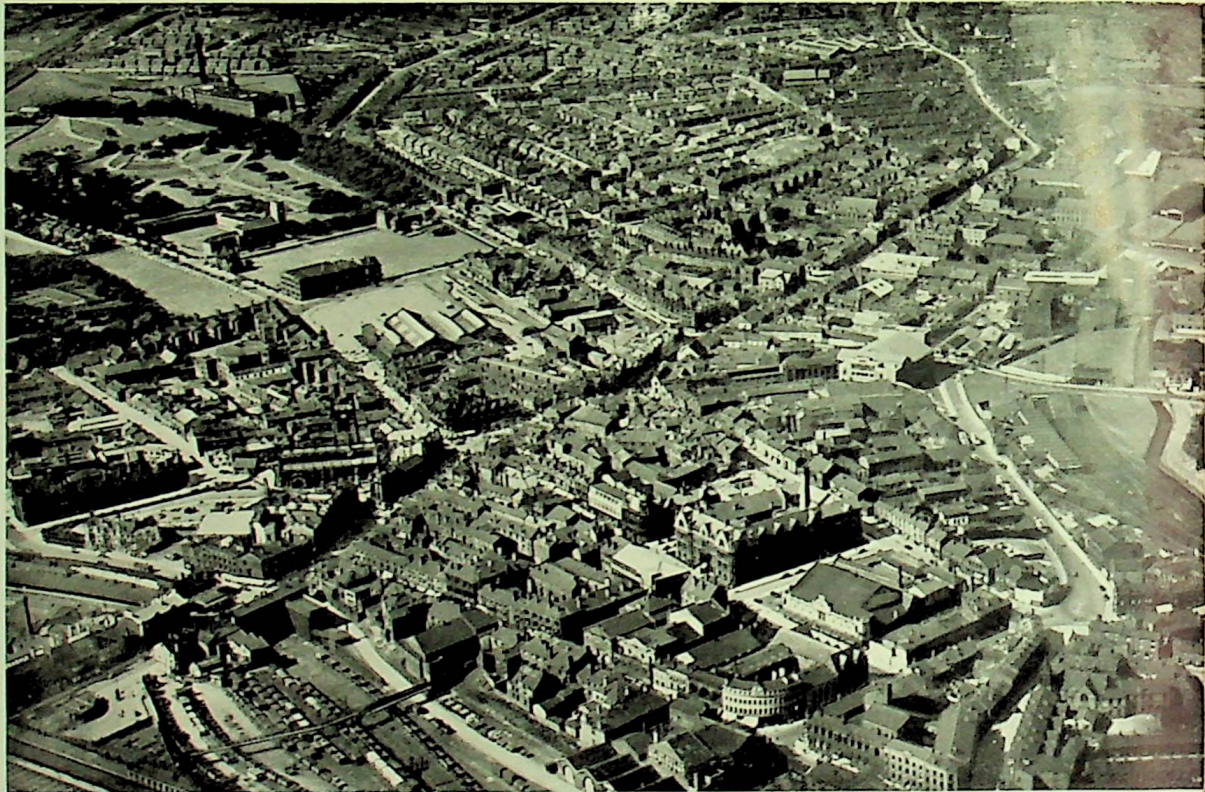


## *Modern Wigan—*



Central Wigan from the air

*—some aspects of the town of today  
as seen by the cameraman at large*



Standishgate—

—and Wallgate





Looking up Hallgate, from  
the Rectory Lodge



A piece of Old Wigan  
—the Wiend



The entrance to Wigan from the north

Impressive Haigh Hall





Upper Dicconson Street

Parsons Walk



The Parish Church (right), before  
which stands the simple and dignified  
War Memorial (below)



Right: An unusual view of  
Arcade and Hewlett Streets





Bishopgate

The Plantation Gates, Wigan Lane





Market Place

The Bus Station in Market Square







# PLAN OF THE CENTRE OF WIGAN

A. Town Hall & Borough Pol. Sta. B. Mun' Build<sup>gts</sup>  
 Scale of 1/4 mile

■ Car Parks

