

NOVEMBER 20



ON-LINE TRAINING NEWSLETTER CURATED BY JOBCHANGE

JOBCHANGE REMAINING OPEN

Jobchange is an Educational facility and a subcontractor to local Colleges. We have been advised that education workers are key workers and as such we will remain open and on current timetables

Dudley Branch will continue to open at 9:30am until 2:15pm daily

Walsall Branch will continue to open at 8:15am - 12:45pm & 1:30pm - 6:15pm Mon - Thurs early closing at 5:30pm on a Friday

Wolverhampton Branch will continue to open at 8:15am - 12:45pm & 1:30pm - 6:15pm Mon - Thurs early closing at 5:30pm on a Friday



There has never been such a great excuse to get out the house and upskill yourself. Did you know if you have a qualification in First Aid you have a transferable skill that all companies look for.

By Law (the Health and Safety (First-Aid) Regulations 1981), employers must make sure there are adequate and appropriate first aid equipment, facilities, and a number of qualified first aiders in the workplace. So what's stopping you get that qualification call Jobchange today to book your place.

job change IN NEED OF CSCS

THE CONSTRUCTION SECTOR IS OPEN
THE CITB CENTRES ARE REMAINING OPEN

WE ARE OPEN AND REMAINING OPEN

TO ENSURE YOU GET YOUR 5 YEAR CARD
YOU CAN NOW ZOOM IN TO THE CLASSROOM

CALL YOUR LOCAL CENTRE
DUDLEY - 01384257825
WOLVERHAMPTON/TELFORD - 01902 714224
WALSALL - 01922 625079

**FREEPHONE
0800 122 3510**



JOB VACANCIES

INVITATION FOR YOU TO APPLY AS A TRAINEE SPRINKLER SERVICE ENGINEER-WEST MIDLANDS

Jobchange have been asked to share this great rare opportunity to train and work around the West Midlands, with a Sprinkler repair company.

Do you know someone with the skills to succeed?

Call us today for more information.



www.jobchange2007.com

INVITATION FOR YOU TO APPLY AS A TRAINEE SPRINKLER SERVICE ENGINEER-WEST MIDLANDS

Jobchange have been asked to help source 5 Trainee Sprinkler Engineers.

Ideally previous experience of Plumbing/Electrical or Engineering with transferable skills and/or qualified in these areas. Based in the West Midlands travelling nationally in a company vehicle. The ideal candidates will hold a driving licence or be near to passing their driving test. If successful a DBS will be completed for this position.

Call Jobchange today to book an appointment with an advisor for more information and support in your application. You will be asked for a CV that shows you can demonstrate experience. Don't Delay call us today

Call for FREE on: 0800 122 3510

FOLLOW US ON FOR CURRENT JOB VACANCIES & TRAINING OPPORTUNITIES

FIRST AID

job change

FREE

EMERGENCY FIRST AID AT WORK

WHAT IS STOPPING YOU FROM GETTING
THE SKILL ALL WORKPLACES REQUIRE

WALSALL JOBCHANGE 17TH & 18TH NOVEMBER
DUDLEY JOBCHANGE 7TH DECEMBER
WOLVERHAMPTON JOBCHANGE 8TH & 9TH DECEMBER

CALL 0800 122 3510

FIRST AID

Join us at Jobchange for the
FREE Emergency First Aid
Course:

Walsall 17th & 18th
November

Dudley 7th November

Wolverhampton 8th & 9th
December



COURSE INFORMATION

WOLVERHAMPTON

LEVEL 1 H&S IN CONSTRUCTION (CSCS)

DATE/ TIMES WEEKLY

DAY 1 MON 8:45AM - 12:30PM

DAY 2 TUES 8:45AM - 12:30PM

DAY 1 THUR 8:45AM - 12:30PM

DAY 2 FRI 8:45AM - 12:30PM

WALSALL

LEVEL 1 H&S IN CONSTRUCTION (CSCS)

DATE/ TIMES WEEKLY

DAY 1 MON 8:45AM - 12:30PM

DAY 2 TUES 8:45AM - 12:30PM

DAY 1 THUR 8:45AM - 12:30PM

DAY 2 FRI 8:45AM - 12:30PM

DUDLEY

LEVEL 1 H&S IN CONSTRUCTION (CSCS)

DATE/ TIMES WEEKLY

DAY 1 TUES 9:45AM - 2:00PM

DAY 2 WED 9:45AM - 2:00PM

DAY 1 THURS 9:45AM - 2:00PM

DAY 2 FRI 9:45AM - 2:00PM

TELFORD

LEVEL 1 H&S IN CONSTRUCTION (CSCS)

ONE DAY COURSE EVERY MONDAY OR TUESDAY

DATE/ TIMES WEEKLY

DAY 1 MON 9AM - 4:30PM

DAY 1 TUES 9AM - 4:30PM



JOBCHANGE HAVE FREE PLACES FOR YOU ON THE LEVEL 2 AWARD IN FOOD SAFETY CALL YOUR NEAREST BRANCH MONDAY AND BOOK YOUR PLACE

DUDLEY - 01384 257825

WOLVERHAMPTON - 01902 714224

WALSALL - 01922 625079

WWW.JOBCHANGE2007.COM

IT'S NOT TOO LATE TO BOOK A FOOD SAFETY COURSE

COME AND JOIN US AT ONE OF OUR BRANCHES

DUDLEY 12TH & 13TH NOVEMBER

WOLVERHAMPTON 19TH & 20TH NOVEMBER

WALSALL 26TH & 27TH NOVEMBER

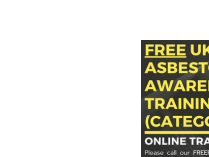
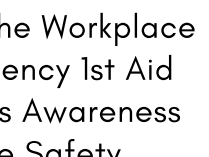
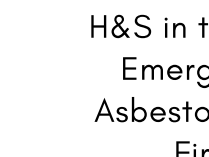
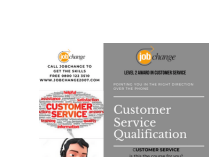
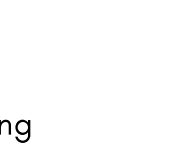
DID YOU KNOW?

WHY DO WE NEED FOOD SAFETY?
WHY IS FOOD SAFETY IMPORTANT?
FOODBORNE ILLNESSES ARE A PREVENTABLE AND UNDERREPORTED PUBLIC HEALTH PROBLEM. THESE ILLNESSES ARE A BURDEN ON PUBLIC HEALTH AND CONTRIBUTE SIGNIFICANTLY TO THE COST OF HEALTH CARE. ... ALTHOUGH ANYONE CAN GET A FOODBORNE ILLNESS, SOME PEOPLE ARE AT GREATER RISK.



ON-LINE COURSES

Food Safety
COSHH
Manual Handling
Customer Service
H&S in the Workplace
Emergency 1st Aid
Asbestos Awareness
Fire Safety



DID YOU KNOW THESE FOLLOWING TERMS ARE ALL USED IN THE CONSTRUCTION INDUSTRY? TEST YOURSELF!



RISK ASSESSMENTS?
IDENTIFYING AND CONTROLLING HAZARDS
METHOD STATEMENTS
OUTLINING RISK AND CONTROL MEASURES
WORK-RELATED FATALITIES
E.G. FALL FROM HEIGHT, HIT BY VEHICLES
WORK-RELATED INJURIES
E.G. SLIPS, TRIPS AND FALLS, MANUAL HANDLING

ACCIDENT
UNPLANNED EVENTS THAT RESULT IN PERSONAL INJURY OR PROPERTY DAMAGE

• **NEAR MISS**

UNPLANNED EVENTS THAT COULD HAVE RESULTED IN LOSS, DAMAGE OR HARM BUT DID NOT

• **HAZARD**

ANYTHING WITH THE POTENTIAL TO CAUSE HARM

• **RISK**

LIKELIHOOD OF HARM OCCURRING

• **COMPETENCE**

EXPERIENCE, KNOWLEDGE AND ABILITY TO PERFORM A TASK SUCCESSFULLY, EFFICIENTLY OR SAFELY



ALL SITES

CAREERS ADVICE & CV SERVICE

DUDLEY, WALSALL, WOLVERHAMPTON AND BILSTON BRC ARE CONTINUING TO

DELIVER FACE TO FACE

AS WELL AS ON-LINE

CAREER ADVICE SESSIONS & CV SERVICE

CONTACT US TO BOOK THE APPOINTMENT

OR DROP IN



<https://www.facebook.com/jobchange2007>



<https://twitter.com/Jobchange2007>



<https://www.instagram.com/jobchange2007/>



GOOD NEWS STORIES



Since coming into contact with Jobchange I have gained an excellent professional CV which advertises my skills effectively. I have also completed a Care course through Jobchange/Sandwell College, I have now gained qualifications in Food Safety, First Aid, Safeguarding, Manual Handling, Equality & Diversity, Health & Safety in the Workplace, and Personal Development into Employability.

I now have interviews lined up with care homes arranged for me through Jobchange. I have a clear path on where I want to go and how I am going to get there. Thank you Jobchange Walsall



Well done Christopher Andrea.

He was absolutely over the moon to gain his Level 1 in Construction at

Wolverhampton Jobchange and wanted to share with everyone that it is possible to gain skills and qualification in these uncertain times.

7 Things Mindful People Do Differently

1

Approach everyday things with curiosity
—and savor them

Forgive their
mistakes—
big or small

2

3

Show gratitude for
good moments—and
grace for bad ones

Practice
compassion and
nurture connections

4

5

Make peace with
imperfection—
inside and out

Embrace vulnerability
by trusting others—
and themselves

6

7

Accept—and
appreciate—that
things come and go

It's been an
absolute pleasure
and has
Sarah been very
helpful

Very helpful. I am really
impressed with the staff
especially Val. She gave
me all the help I needed.
You are a star . Thanks for
the CV and my CSCS card
training. Xx

"Eleanor was good
at explaining
things to me."

"Thank you for my c v
I'm really grateful I
have my CV done now
and i'm starting a food
safety course as well
thank you zoe"

CONTACT US

Wolverhampton: 01902 714224

Walsall: 01922 625079

Dudley: 01384 257825

FREE phone 0800 122 3510

Info@Jobchange2007.com

www.jobchange2007.com



196 Wolverhampton Street
Dudley DY1 1ZD
Tel 01384 257825



WE ARE DOING IT SAFELY!

JOBCHANGE - DUDLEY

ARE OPEN DAILY

MONDAY TO FRIDAY

9:30AM - 2:15PM

CAREERS ADVICE AND GUIDANCE

CSCS COURSES

ON-LINE COURSES

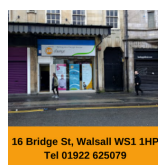
CV WRITING SERVICE

ALL COURSES ARE AVAILABLE THROUGH GOOGLE MEET

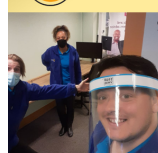
Call us on 0800 122 3510

or direct on 01384 257825

www.jobchange2007.com



16 Bridge St, Walsall WS1 1HP
Tel 01922 625079



WE ARE DOING IT SAFELY!

JOBCHANGE - WALSHALL

FROM MONDAY 19TH OCTOBER

ARE OPEN DAILY

MONDAY TO FRIDAY

8.00AM - 12:45PM

1.30PM - 6:15PM

CAREERS ADVICE AND GUIDANCE

CSCS COURSES

ON-LINE COURSES

CV WRITING SERVICE

CARE COURSES

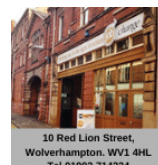
ESOL

ALL COURSES ARE AVAILABLE THROUGH GOOGLE MEET

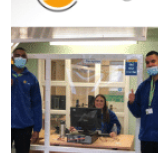
Call us on 0800 122 3510

or direct on 01922 625079

www.jobchange2007.com



10 Red Lion Street,
Wolverhampton, WV1 4HL
Tel 01902 714224



NEW OPENING TIMES!

JOBCHANGE - WOLVERHAMPTON

FROM MONDAY 12TH OCTOBER

ARE OPEN DAILY

MONDAY TO FRIDAY

8.00AM - 12:45PM

1.30PM - 6:15PM

CAREERS ADVICE AND GUIDANCE

CSCS COURSES

ON-LINE COURSES

CV WRITING SERVICE

ESOL

ENGLISH, MATHS, COMPUTERS

10 DAY CARE COURSE

COURSES ARE AVAILABLE THROUGH GOOGLE MEET

Call us on 0800 122 3510 or direct on

01902 714224

www.jobchange2007.com