

COMMUNITY FOR OLDER ADULTS SUFFERING BY COGNITIVE DECLINE

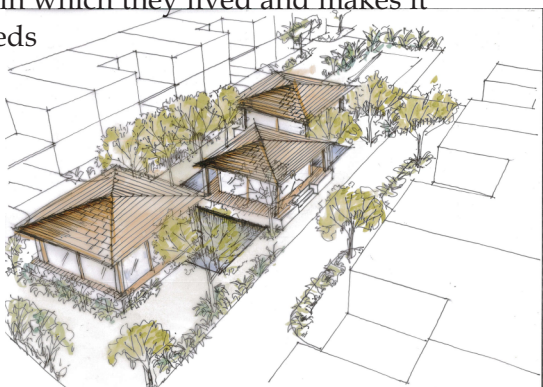
Investment opportunity - SARAJEVO Settlement

New Concept

We perceived that a current system don't satisfies nor minimum needs of older adults, therefore, we decided offer the new vision of life to older adults. The new Concept offer new vision throughout till now unapplied way of housing and care which raise quality of life and provide dignified continuation of life without fear and uncertain what will brought the future. The Concept should overcome the problems of society faced by the elderly and related to access to health care and social programs and the provision of care in case of illness and loss of some function.

Cost-effective & affordable

it is a cost-effective way of life for the elderly. Living together neutralizes the shortcoming of their own homes and conditions in which they lived and makes it easier to meet their needs



CONTACT US !
Centar za demenciju

fb: Centar za demenciju
web: www.demencija.org
phone: +387 33 200223
mail: bih@demencija.org

*Life with dementia
should not be scary
story without dignity
and burden for the rest
of family*

AGING IN PLACE :
INDEPENDENT LIVING, ASSISTED
LIVING, ALZHEIMER's CARE,
GERIATRIC & PALLIATIVE CARE



*safe live,
independence, full
privacy, contact with
nature, strenghteen of
potential,
intergenerational
exchange*

COMMUNITY FOR OLDER ADULTS SUFFERING BY COGNITIVE DECLINE

Investment opportunity - SARAJEVO Settlement



Who we are?

Centre for dementia Sarajevo in collaboration with international team of experts (practitioners & academia) with long-term experience in the field of dementia care.

What is our vision ?

Our vision is establishing of community to people suffering by cognitive decline or dementia where they would experience improved life quality, get dignity and have treatment avoiding use of medications.

What is our mission ?

Build the pilot facility in Sarajevo and in the next ten years establish network of communities, at least 25 units, in SE Europe.

What is our advantage ?

do not exist similar project in Europe!

Why we do that ?

Regional problem is loss of residents due to migrations and aging and increasing of number of people with dementia(PwD)! See the next figure!

Country	residents/PwD	residents/PwD
BiH	3.500.000/120.000	3.200.000/150.000
Bulgaria	7.050.034/108.884	6.686.471/114.779
Croatia	4.105.493/65.876	3.994.079/74.994
Greece	10.741.165/213.678	10.154.677/240.977
Hungary	9.778.371/145.688	9.514.330/163.177
Romania	19.50.631/279.607	18.772.908/303.511
Sjeverna Makedonija	2.075.301/18.389	2.073.808/21.194
Crna Gora	622.359/6.574	627.148/7.584

