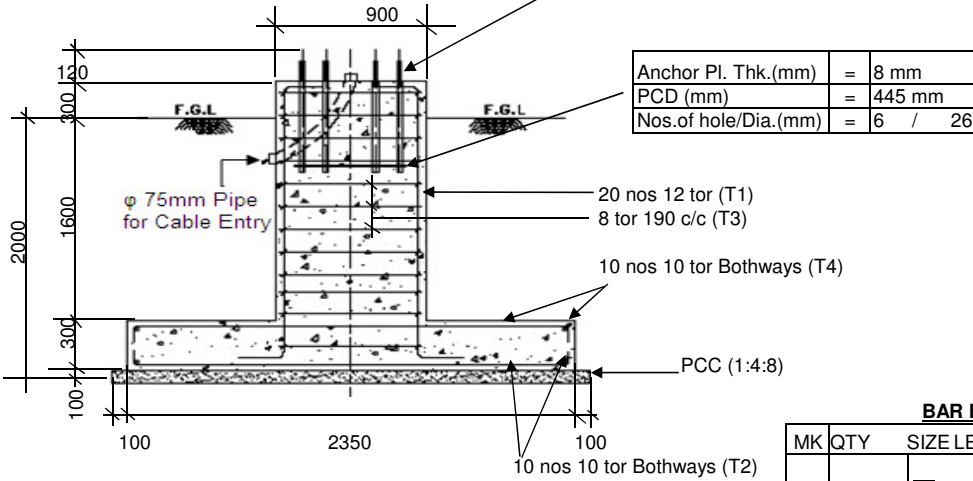
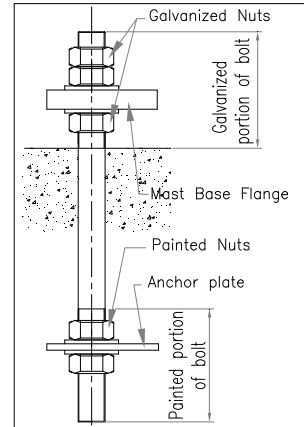
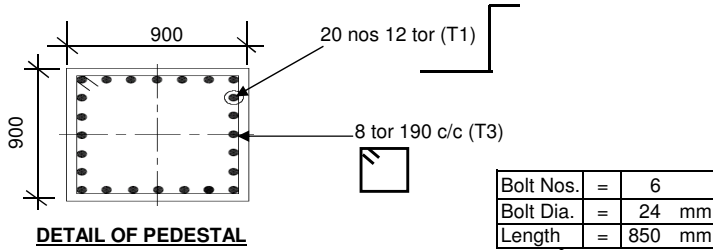


BEFORE CASTING THE FOUNDATION VERIFY THE DIMENSIONS OF THE FOUNDATION BOLT (DIA.& QTY.) AND ANCHOR PLATE (PCD) WITH RESPECT TO THE DIMENSIONS MENTIONED IN THIS DRG.

FOUNDATION LOADINGS		
WIND SPEED	(M/SEC)	44
BENDING MOMENT	(T-M)	6.608
HORIZONTAL SHEAR	(T)	0.730
VERTICAL LOAD	(T)	0.813
MAX GR BEARING		
PRESSURE	(T/M ²)	7.545
SAFETY FACTOR AGAINST OVERTURNING		1.986
CONCRETE MIX VIBRATED		M-20
MIN COVER	(MM)	50
STEEL		Fe-415
SOIL BEARING CAPACITY	(T/M ²)	10.00
PROJECTED AREA	(M ²)	0.739

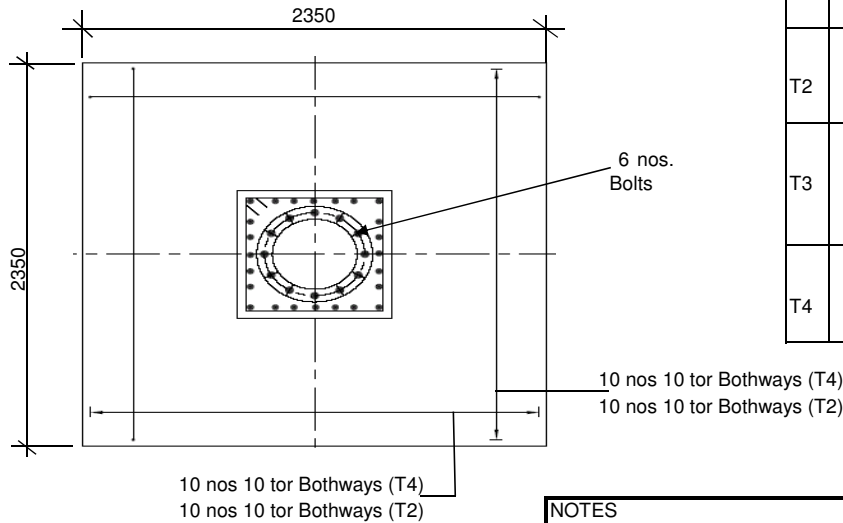


BAR BENDING SCHEDULE

MK	QTY	SIZE	LENGTH	SHAPE
T1	20	Φ12	2495	
T2	20	Φ10	2450	
T3	12	Φ8	3392	
T4	20	Φ10	2450	

QUANTITIES

RCC (M ³)	PCC (M ³)	STEEL (kg)
3.20	0.65	126.976



NOTES

- 1- ALL DIMENSIONS ARE IN MM. DO NOT SCALE THE DRAWING
- 2- MIN. LAP LENGTH OF BARS SHALL BE 50xD. UNLESS OTHERWISE STATED.
- 3- WE RECOMMENDED THAT MAST FLANGE REMAIN UNGROUTED
- 4- IF GROUTING IS CARRIED OUT IT IS ESSENTIAL TO LEAVE A MINIMUM OF 4 NOS 25MM DIA DUCTS EQUALLY SPACED AROUND THE FLANGE TO ALLOW DRAINAGE AND VENTILATION
- 5- BARS DRAWN IN THE DRAWING ARE FOR ILLUSTRATION ONLY. REFER TO THE NUMBERS SHOWN FOR ACTUAL REINFORCEMENT QUANTITY.

This drawing is the property of "BAJAJ ELECTRICALS LTD." & must be returned on request. It is submitted as confidential information in connection with enquiry, tender, orders or contracts. It is not to be used for any other purpose or order nor may it be re-copied or lent without our authority in writing

REV	DESCRIPTION	DATE

DATE	18/5/16
DRN BY	AUTO
DSGD BY	VDH
CHKD BY	SRH
APPRD BY	CSM
SCALE	NTS

TITLE: General Arrangement Foundation
Drawing for 20m High Mast
PROJECT: M/s-



Bajaj Electricals Limited
DRAWING NUMBER: -
BHMRL20A-44mps

Sheet No.	Rev.
01 of 01	0