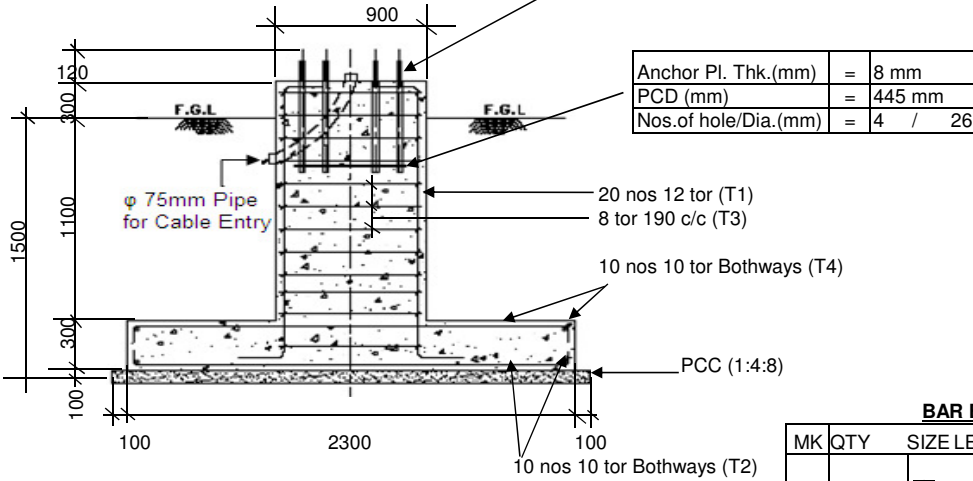
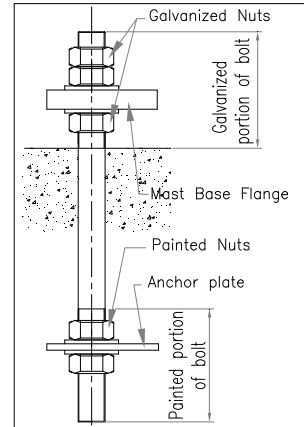
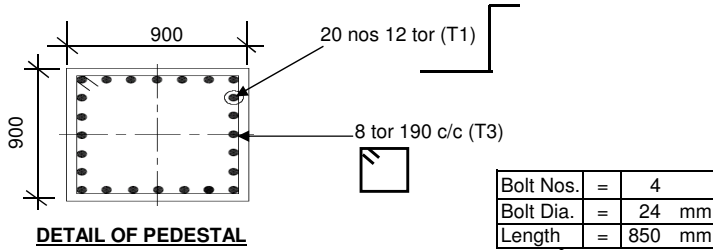


**BEFORE CASTING THE FOUNDATION VERIFY THE DIMENSIONS OF THE FOUNDATION BOLT (DIA.& QTY.) AND ANCHOR PLATE (PCD) WITH RESPECT TO THE DIMENSIONS MENTIONED IN THIS DRG.**

FOUNDATION LOADINGS		
WIND SPEED	(M/SEC)	47
BENDING MOMENT	(T-M)	4.615
HORIZONTAL SHEAR	(T)	0.766
VERTICAL LOAD	(T)	0.697
MAX GR BEARING PRESSURE	(T/M <sup>2</sup> )	5.809
SAFETY FACTOR AGAINST OVERTURNING		2.068
CONCRETE MIX VIBRATED		M-20
MIN COVER	(MM)	50
STEEL		Fe-415
SOIL BEARING CAPACITY	(T/M <sup>2</sup> )	10.00
PROJECTED AREA	(M <sup>2</sup> )	1.086

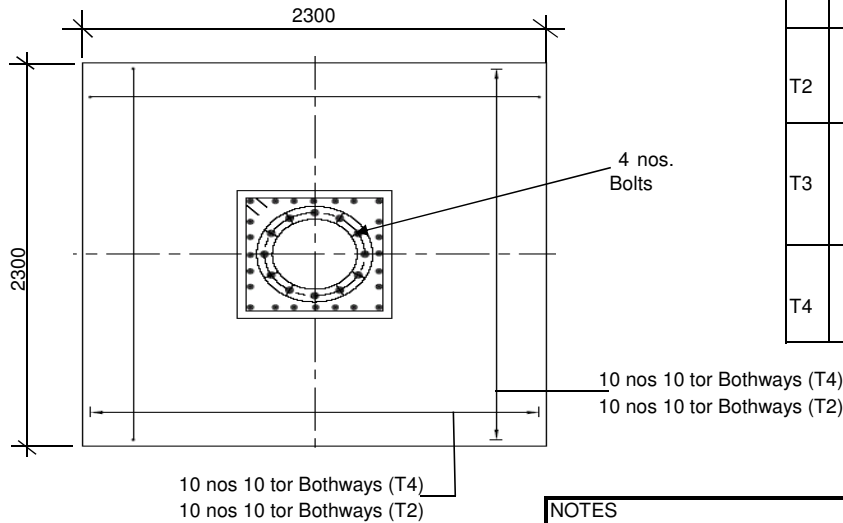


**BAR BENDING SCHEDULE**

MK	QTY	SIZE	LENGTH	SHAPE
T1	20	Φ12	1995	
T2	20	Φ10	2400	
T3	9	Φ8	3392	
T4	20	Φ10	2400	

**QUANTITIES**

RCC (M <sup>3</sup> )	PCC (M <sup>3</sup> )	STEEL (kg)
2.72	0.63	112.126



**NOTES**

- 1- ALL DIMENSIONS ARE IN MM. DO NOT SCALE THE DRAWING
- 2- MIN. LAP LENGTH OF BARS SHALL BE 50xD. UNLESS OTHERWISE STATED.
- 3- WE RECOMMENDED THAT MAST FLANGE REMAIN UNGROUTED
- 4- IF GROUTING IS CARRIED OUT IT IS ESSENTIAL TO LEAVE A MINIMUM OF 4 NOS 25MM DIA DUCTS EQUALLY SPACED AROUND THE FLANGE TO ALLOW DRAINAGE AND VENTILATION
- 5- BARS DRAWN IN THE DRAWING ARE FOR ILLUSTRATION ONLY. REFER TO THE NUMBERS SHOWN FOR ACTUAL REINFORCEMENT QUANTITY.

This drawing is the property of "BAJAJ ELECTRICALS LTD." & must be returned on request. It is submitted as confidential information in connection with enquiry, tender, orders or contracts. It is not to be used for any other purpose or order nor may it be re-copied or lent without our authority in writing

REV	DESCRIPTION	DATE

DATE	20/5/16
DRN BY	AUTO
DSGD BY	VDH
CHKD BY	SRH
APPRD BY	CSM
SCALE	NTS

**TITLE: General Arrangement Foundation**  
**Drawing for 12.5m High Mast**  
**PROJECT: M/s-**



**Bajaj Electricals Limited**  
**DRAWING NUMBER: -**  
**BHMRL12.5C-47mps**

Sheet No.	Rev.
01 of 01	0