

# Concrete Tiles

Southern Region

Marley Modern  
M22 Slate



At Marley Roofing we are passionate about serving our customer's needs and as a result, positively contribute to the success of their projects.

We appreciate that each project is different, and we're as committed as you are, to ensure that our product offering is extensive and inclusive to equip you with the ideal product solutions to meet your project needs, budget and expectations.

Marley Roofing's new brand pillars and their respective product solutions offer our customers a competitive advantage by meeting the demands of their individual customers - whether they are seeking a premium modern aesthetic with superior quality and performance, or an affordable traditional roofing solution - to achieve the best possible results.

PREMIUM	ESSENTIALS	ECONOMY
Superior quality with best-in-class aesthetics roofing solutions	Affordable high-performance roofing solutions	Cost-effective & durable roofing solutions
MARLEY M22 PREMIUM COATED CONCRETE TILES	MARLEY M11 COATED CONCRETE TILES	MARLEY STANDARD TROUGH-COLOUR CONCRETE TILES

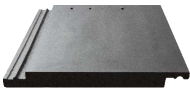
What ever your budget and performance requirements, Marley Roofing's concrete tile range offers a solution that will meet your needs.

With Marley Roofing, **We've got you covered!**

# Marley Southern Region Colour Range



Marley Homestead



Marley Modern

PREMIUM

Marley M22



M22 Slate



M22  
Terracotta



M22 Slate



M22 Emerald  
Green



M22 Midnight  
Black



View the back of this brochure for more information about the Marley M22 guarantee

ESSENTIALS

Marley M11



View the back of this brochure for more information about the Marley M11 guarantee

Marley Multi Coloured Range



Antique  
Terracotta

ECONOMY

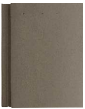
Standard Through -colour



Standard  
Red



Standard  
Terracotta



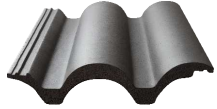
Standard  
Slate



Standard  
Slate



Marley Double Roman Plus



Marley Monarch



M22  
Black



M22  
Slate



M22  
Slate



M22  
Terracotta



M11 Burnt  
Red



M11 Ventian  
Terracotta



M11 Charred  
Slate



M11  
Midnight  
Black



M11 Jurassic  
Amber



M11  
Meadow  
Green



M11  
Woodlands  
Brown



Antique  
Brown



Antique  
Terracotta



Antique  
Amber



Antique  
Terracotta



Antique  
Amber



Antique  
Brown



Standard  
Slate



Standard  
Red



Standard  
Brown



Standard  
Slate



Standard  
Brown



Standard  
Terracotta



Standard  
Terracotta



Standard  
Amber



Standard Amber

Please note that some colours are made to order with a 10 day lead time requirement – please contact your Marley Roofing representative for more information.

Colours are as accurate as printing will allow, please refer to physical samples for most accurate colour reference.

## Marley Clear Coat – Enhanced Colour

Marley Roofing now offers a range of its Spectrum and Antique profiles in Marley Clear Coat – providing a richer deeper colour expression to these multiple coloured profiles with the added benefit of sealed protection against harsh climatic conditions.

### Advantages

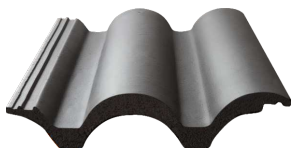
- > Improved aesthetic – multiple coloured profiles appear richer and deeper in colour
- > Additional weathering protection – no surface erosion and promotes water-shedding and dirt resistance

### Range

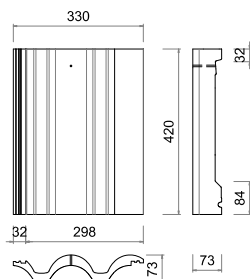
- > Double Roman Plus - Spectrum Slate, Antique Amber, Antique Brown, Antique Terracotta
- > Monarch – Antique Amber, Antique Brown, Antique Terracotta
- > Modern – Antique Terracotta

# Marley Monarch

An exceptionally strong classic bold roll tile that is well suited to Modern Balinese and Mediterranean architectural styles.



Marley Monarch



## Advantages

- > Extra-strong high-performance bold-roll
- > Highly cost effective alternative to the traditional "under-and-over" clay tiles
- > A large choice of aesthetic colours and finishes
- > Also available in multicolour Designer Range

## Colour Range

View the colour chart within this brochure for the full comprehensive range of colours available in this profile.

Technical Data	
Size of Tile	420 x 332 mm
Minimum Pitch	17,5° (100mm headlap) / 26° (75mm headlap)
Maximum Pitch	45° (Above maximum pitch consult Marley Roofing)
Minimum Headlap	75mm (for pitch of 26° and above) 100mm (for pitches of 17,5° to 26°)
Maximum Gauge	320mm (100mm headlap and at pitches between 17,5° and 26°) 345mm (75mm headlap and at pitches of 26° and above)
Cover Width	301mm (nominal at lock mid shuffle position)
Hanging Length	392mm (nominal)
Covering Capacity	10,48 tiles/m <sup>2</sup> (net) at 100mm headlap 9,63 tiles/m <sup>2</sup> (net) at 75mm headlap
Weight of Tiling	+ - 51,9 kg/m <sup>2</sup> at 100mm headlap + - 48,2 kg/m <sup>2</sup> at 75mm headlap
Battens Required	3,13 lin.m/m <sup>2</sup> at 100mm headlap 2,9 lin.m/m <sup>2</sup> at 75mm headlap
Batten Size Recommended	
38 x 38mm for rafters/supports not exceeding 760mm centres	
38 x 50mm (batten fixed flat) for rafters/supports not exceeding 900mm centres	
38 x 50mm (batten on edge) for rafters/supports not exceeding 1 000mm centres	

Note: Above 760mm the rafter spacing can be increased only with engineer-designed trusses and with 38 x 50mm batten of the correct grade. All structural timber must comply with S.A National Standards.

Marley Undertile Membrane or Radiant Barrier is recommended at all pitches in exposed and coastal areas.

\*For more on special notes please visit [www.marleyroofing.co.za](http://www.marleyroofing.co.za)





Marley Monarch  
Clear Coat finish

Designer range: Palazzo

(Standard Terracotta,  
Antique Terracotta,  
Antique Amber,  
Antique Slate)

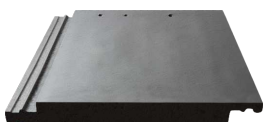
Traditional and elegant - the bold Marley Monarch profile offers an affordable alternative to clay tiles.

**New! Marley Clear Coat adds richness to antique profiles with the added benefit of sealed protection against extreme weathering.**

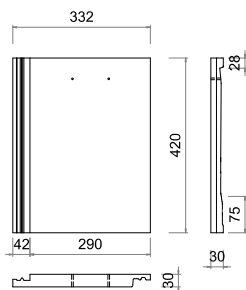
Available in Marley M22 Premium Coated with a 22-year guarantee.

# Marley Modern

An elegant flat profile that greatly enhances a contemporary minimalist roof line.



Marley Modern



## Advantages

- > A highly cost-effective alternative to natural slate
- > Clean and precise slate-like appearance with the strength and durability of a concrete interlocking tile
- > A large choice of aesthetic colours and finishes
- > Also available in multicolour Designer Range

## Colour Range

View the colour chart within this brochure for the full comprehensive range of colours available in this profile.

Technical Data	
Size of Tile	420 x 332mm
Minimum Pitch	16° (22.5° for Rafters/Trusses lengths exceeding 8m and up to 10m)
Maximum Pitch	55° (Above maximum pitch consult Marley Roofing)
Minimum Headlap	100mm for rafter lengths up to 10m.
Maximum Gauge	320mm
Cover Width	291mm (nominal at lock mid shuffle position)
Hanging Length	392mm (nominal)
Covering Capacity	10,8 tiles/m <sup>2</sup> (net)
Weight of Tiling	+ - 56kg/m <sup>2</sup>
<b>Battens Required (3.13 lin.m/m<sup>2</sup>) &amp; Batten Size Recommended</b>	
38 x 38mm for rafters/supports not exceeding 760mm centres	
38 x 50mm (batten fixed flat) for rafters/supports not exceeding 900mm centres	
38 x 50mm (batten on edge) for rafters/supports not exceeding 1 000mm centres	

\* Note: Above 760mm the rafter spacing can be increased only with engineered designed trusses and with 38 x 50mm batten of the correct grade.

**Use broken-bond practice only!**

**Marley Radiant Barrier is compulsory for pitches below 26 degrees in all cases and Radiant Barrier or Undertile Membrane is compulsory for any pitch above 26 degrees and in all cases.**

\*For more on special notes please visit [www.marleyroofing.co.za](http://www.marleyroofing.co.za)



Marley Modern  
Bespoke mix:  
Antique Red,  
Antique Amber  
Antique Slate

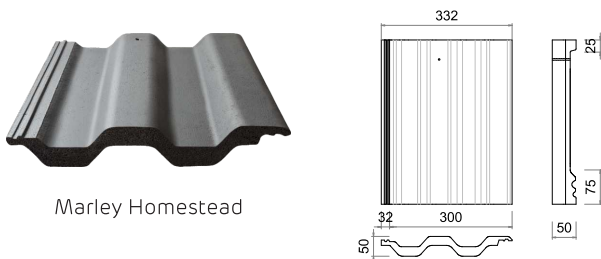


The elegant clean lines of this profile, combined with contemporary architecture offers the perfect solution to modular lifestyle estates.

**Also available in Marley M22 Premium with a 22-year guarantee.**

# Marley Homestead

A classic flat-ribbed profile in the Marseilles tradition specifically designed for coastal regions.



Marley Homestead

## Advantages

- > Versatile roof application well suited to most architectural styles
- > Enhanced strength due to the double pantile design
- > A large choice of aesthetic colours and finishes included

## Colour Range

View the colour chart within this brochure for the full comprehensive range of colours available in this profile.

Technical Data	
Size of Tile	420 x 332 mm
Minimum Pitch	17,5° (100mm headlap) / 26° (75mm headlap)
Maximum Pitch	45° (Above maximum pitch consult Marley Roofing)
Minimum Headlap	75mm (for pitch of 26° and above) 100mm (for pitches of 17,5° to 26°)
Maximum Gauge	320mm (100mm headlap and at pitches between 17,5° and 26°) 345mm (75mm headlap and at pitches of 26° and above)
Cover Width	301mm (nominal at lock mid shuffle position)
Hanging Length	395mm (nominal)
Covering Capacity	10,38 tiles/m <sup>2</sup> (net) at 100mm headlap 9,63 tiles/m <sup>2</sup> (net) at 75mm headlap
Weight of Tiling	+ - 46,7 kg/m <sup>2</sup> at 100mm headlap + - 43,4 kg/m <sup>2</sup> at 75mm headlap
Battens Required	3,13 lin.m/m <sup>2</sup> at 100mm headlap 2,9 lin.m/m <sup>2</sup> at 75mm headlap
Batten Size Recommended	
38 x 38mm for rafters/supports not exceeding 760mm centres	
38 x 50mm (batten fixed flat) for rafters/supports not exceeding 900mm centres	
38 x 50mm (batten on edge) for rafters/supports not exceeding 1 000mm centres	

Note: Above 760mm the rafter spacing can be increased only with engineer-designed trusses and with 38 x 50mm batten of the correct grade. All structural timber must comply with S.A National Standards.

Marley Undertile Membrane or Radiant Barrier is recommended at all pitches in exposed and coastal areas.

\*For more on special notes please visit [www.marleyroofing.co.za](http://www.marleyroofing.co.za)

Marley Homestead  
Terracotta

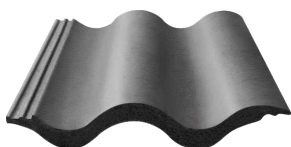


With its character reflecting that of the traditional Marseilles tile - the Marley Homestead concrete interlocking tile brings its own elegance and character to the roof and provides an upmarket alternative to clay tiles

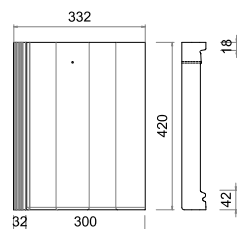
**Also available in Marley M22 Premium Coated with a 22-year guarantee.**

# Marley Double Roman Plus

A symmetrical deep roll profile that combines the character of traditional Victorian style with solid functionality.



Marley Double Roman Plus



## Advantages

- > Supremely functional and versatile profile that performs well at all pitches
- > Highly cost-effective solution well suited for large housing projects
- > A large choice of aesthetic colours and finishes

## Colour Range

View the colour chart within this brochure for the full comprehensive range of colours available in this profile.

### Technical Data

Size of Tile	420 x 332mm
Minimum Pitch	17,5° (100mm headlap) / 26° (75mm headlap)
Maximum Pitch	45° (Above maximum pitch consult Marley Roofing)
Minimum Headlap	75mm (for pitch of 26° and above) 100mm (for pitches of 17,5° to 26°)
Maximum Gauge	320mm (100mm headlap and at pitches between 17,5° and 26°) 345mm (75mm headlap and at pitches of 26° and above)
Cover Width	301mm (nominal at lock mid shuffle position)
Hanging Length	402mm (nominal)
Covering Capacity	10,42 tiles/m <sup>2</sup> (net) at 100mm headlap 9,66 tiles/m <sup>2</sup> (net) at 75mm headlap
Weight of Tiling	+ - 43,76kg/m <sup>2</sup> at 100mm headlap + - 40,57kg/m <sup>2</sup> at 75mm headlap
Battens Required	3,13 lin.m/m <sup>2</sup> at 100mm headlap 2,9 lin.m/m <sup>2</sup> at 75mm headlap
Batten Size Recommended	
	38 x 38mm for rafters/supports not exceeding 760mm centres
	38 x 50mm (batten fixed flat) for rafters/supports not exceeding 900mm centres
	38 x 50mm (batten on edge) for rafters/supports not exceeding 1 000mm centres

Note: Above 760mm the rafter spacing can be increased only with engineer-designed trusses and with 38 x 50mm batten of the correct grade. All structural timber must comply with S.A National Standards.

Marley Undertile Membrane or Radiant Barrier is recommended at all pitches in exposed and coastal areas.

\*For more on special notes please visit [www.marleyroofing.co.za](http://www.marleyroofing.co.za)

Marley Double Roman Plus  
Standard Through-colour Terracotta



Well suited for large housing projects, this profile's design has been optimised to make it exceptionally strong and highly cost-effective .

**Also available in Marley M11 Coated with a 7-year guarantee.**

# Marley M11 Coated Concrete Tile



## ESSENTIALS

Listed within our Essentials Solutions Range, Marley's M11 Coated Concrete Tile offers an affordable solution to efflorescence - delivering an attractive colour uniform roof with excellent durability, whilst conforming to budget and maintenance requirements.

### Advantages

- > **Complete confidence:**
  - 7 Year quality guarantee
- > **Excellent durability**
  - UV Stable
  - Long lasting protection against surface erosion
  - Seals surface to promote water-shedding
  - Inherent algae and fungi resistance
- > **Affordable and attractive aesthetic**
  - Affordable upgrade from standard through-coloured tile
  - Guaranteed colour uniformity in a range of popular colours and profiles
  - Elimination of efflorescence that can disturb colour uniformity of a roof
- > **Low maintenance coating**
  - Extension of maintenance cycles and reduction in maintenance budgets
  - Simple and effective replacements that do not require repainting

### Guarantee Registration

For more information on terms & conditions and how to register the guarantee, visit [www.marleyroofingguarantee.co.za](http://www.marleyroofingguarantee.co.za) or scan the QR code at the back of this brochure to visit our official website and click on the registration tab on our home page.





## Marley M22 Premium Coated Concrete Tile

**PREMIUM**

Forming part of our Premium Solutions Range and with a proven track record of over 36 years, Marley's M22 Premium Coated Concrete Tile remains our best-in-class coated offer. Providing the ultimate assurance in durability and long-lasting colour uniformity for decades to come.

### Advantages

- > **Ultimate assurance:**
  - A 22 year quality guarantee
  - Proven performance with a 36 year track record
- > **Superior quality with extreme durability:**

Extreme UV resistance - colours stay truer for decades to come Silk textured finish provides extreme weathering protection:

  - No surface erosion
  - Promotes water-shedding and dirt resistance
  - Algae and fungi resistant that eliminates periodic pressure cleaning
- > **Best-in-class life time solution to lasting colour uniformity and aesthetic appeal:**
  - Largest range of modern colours within a broad selection of profiles
  - Minimal fading during life time of tiles
  - Elimination of efflorescence that can disturb colour uniformity of a roof
  - Colour consistency from batch to batch allows colour uniformity on large developments extending over a period of time
- > **Virtually maintenance-free coating:**
  - Extension of maintenance cycles with significant reduction in maintenance budgets
  - Simple and effective replacements that do not require repainting



# Cooler summers and warmer winters?



Marley Roofing's new and improved Radiant Barrier range promotes longer lasting, high performance roofing systems with the added benefit of improved indoor temperatures and comfort.

# Marley Radiant Barriers

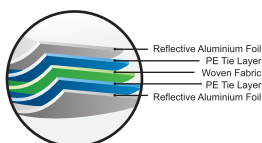
As part of our Essentials and Premium range, you are sure to find a radiant barrier solution to meet your performance needs and budgetary requirements.

## Advantages

- > **Non-tear structure** – high tensile and nail tear strength
- > **Fused structure** – no delamination
- > **Adheres to SANS 428 fire rating**
- > **Improved R-values** – improved indoor comfort and reduced energy consumption
- > **Effective dust and moisture barrier** – prevents rainwater penetration in extreme conditions

### PREMIUM

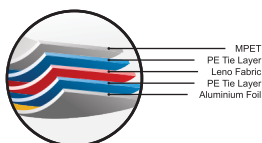
#### **SUPERIOR** Double-Sided Radiant Barrier



Usage:	Residential
Dimensions:	1250mm x 40m
Coverage:	50m <sup>2</sup>
Weight:	6.20kg
Grammage:	117g/m <sup>2</sup>
R-Value (M <sup>2</sup> k/W):	1.86*
Tensile Breaking Strength (kN/m)	
MD:	>7.2
CD:	>5.4
Fire Rating:	B/B1/2

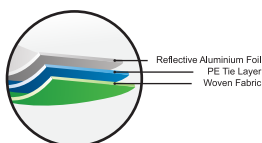
### ESSENTIALS

#### **SUPREME** Double-Sided Radiant Barrier



Usage:	Residential
Dimensions:	1250mm x 36m
Coverage:	45m <sup>2</sup>
Weight:	4.20kg
Grammage:	90g/m <sup>2</sup>
R-Value (M <sup>2</sup> k/W):	1.49*
Tensile Breaking Strength (N/50m)	
MD:	>350
CD:	>300
Fire Rating:	B/B1/2

#### **SUPREME** Single-Sided Radiant Barrier



Usage:	Residential
Dimensions:	1250mm x 36m
Coverage:	45m <sup>2</sup>
Weight:	3.95kg
Grammage:	80g/m <sup>2</sup>
R-Value (M <sup>2</sup> k/W):	>1*
Tensile Breaking Strength (Kn/m)	
MD:	>4
CD:	>4
Fire Rating:	B/B3/4

\*Tested with a 40mm air gap. For more information contact [info@marley.co.za](mailto:info@marley.co.za)  
Please note R-values are subject to change due to ongoing testing.

# Concrete Fittings

All Marley Roofing concrete fittings have been designed to optimally complement our full concrete profile range



Butt Joint V Ridge  
2.4 per meter



Butt Joint  
Hip Starter



Taper Ventilated  
Ridge



Mono Ridge Tile  
2.7 per meter



V-Capped Ridge  
2.3 per meter



Taper  
Hip Starter



Taper Ridge  
2.4 per meter



Rake Verge  
3.2 per meter



We know how important it is to find practical information and to keep up with the latest development in Roofing. Visit [Marleyroofing.co.za](https://www.marleyroofing.co.za) or scan the QR code for more information on the latest in Roofing news, products and tips.

COM/CONCORT SIMAR/18



<https://www.facebook.com/MarleyRoofingZA>  
<https://www.linkedin.com/company/27058241/>

CALL 010 600 0284  
EMAIL [info@marley.co.za](mailto:info@marley.co.za)  
OR VISIT [www.marleyroofing.co.za](http://www.marleyroofing.co.za)

44-50 Industry road,  
Clayville Ext 4,  
Olifantsfontein



an **etex** company