

Ready Nevada County: Preparing for the Future

Wildfire Prevention, Emergency Services and Disaster Readiness Measure (Proposed)

August 4, 2022



Raging wildfires.
Giant snowstorms.
Prolonged drought.

As wildfires become more frequent and more destructive, heat events become increasingly common, and climate uncertainties mean more risk of droughts, floods, and extreme weather events, **Nevada County must be well prepared for any type of natural disaster.**



The 2021 Winter Snowstorm downed large trees, which knocked over powerlines, crashed through roofs, and blocked roadways.

Thousands of residents were without power, water, communications, food, medicine, and fuel for many days, even weeks.



THIS IS WHAT WE ARE UP AGAINST

7 of the top 20 most destructive California wildfires in recorded history have occurred since 2020.

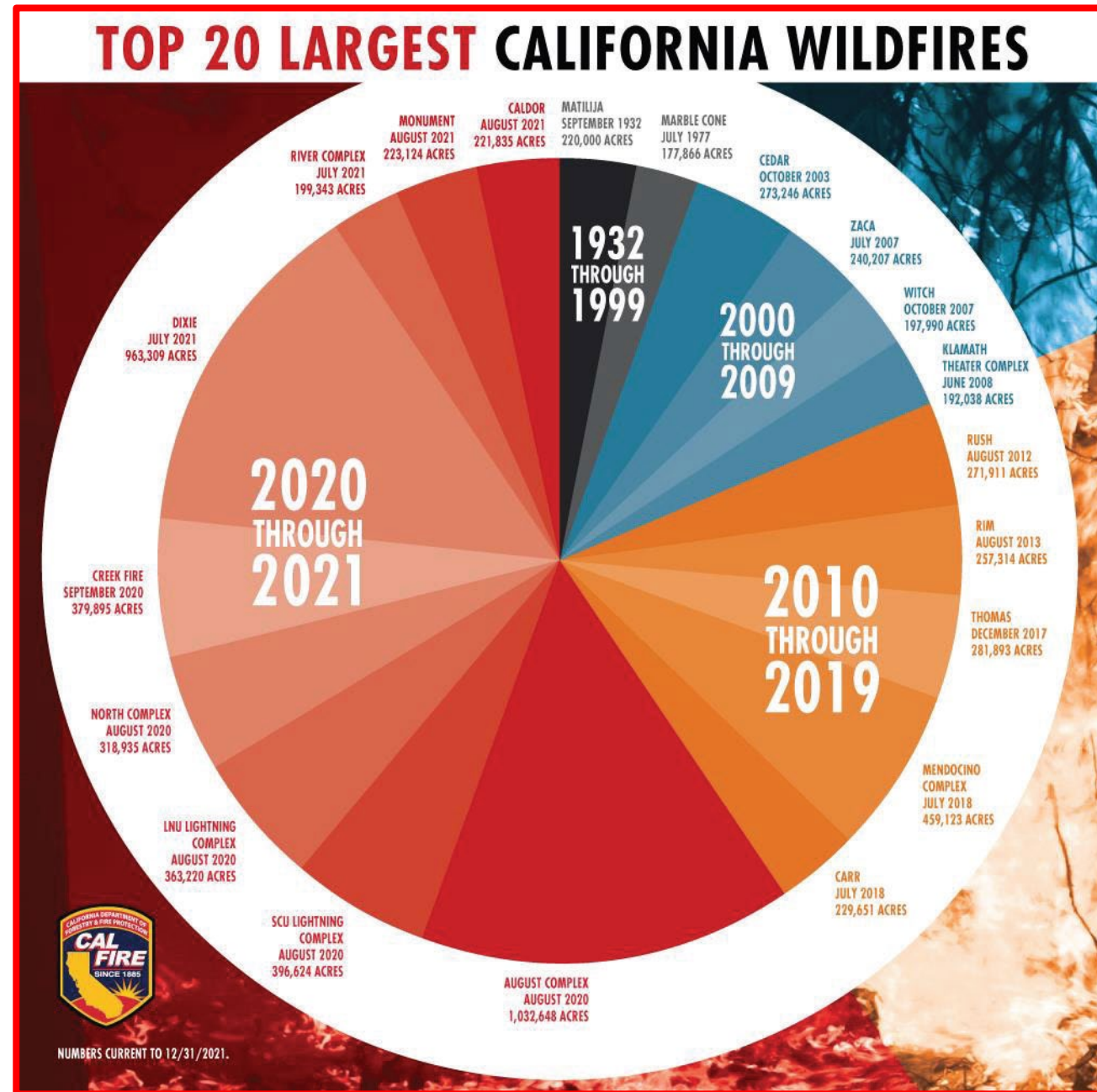
92% of Nevada County residents live in high or very high fire hazard severity zones.

During the Winter Storm, many residents were without power for 10+ days.

Major heat events are increasing in frequency and duration.

Power shut-offs challenge individuals and the local economy.

Nevada County must take action to mitigate catastrophic events.



Emergency Preparedness is a Board Priority

At the January 2020, 2021 and 2022 Board Workshops, the Board continued to direct staff to engage stakeholders and residents in a needs assessment and identify a **sustainable funding strategy**.



We've been listening to the community...

1. Prevent wildfires
2. Reduce flammable brush
3. Improve evacuation routes
4. Enforce fire safety laws
5. Improve emergency communications and early warning systems
6. Help low-income seniors and disabled residents maintain defensible space around their homes



Community outreach: What's your priority?

Firewise groups included Darkhorse, Greenhorn, Lake Vera/Round Mountain, Lake Wildwood, Upper Rough and Ready, Scott's Flat Pines Road, You Bet, and the larger Nevada County Coalition of Firewise Communities.

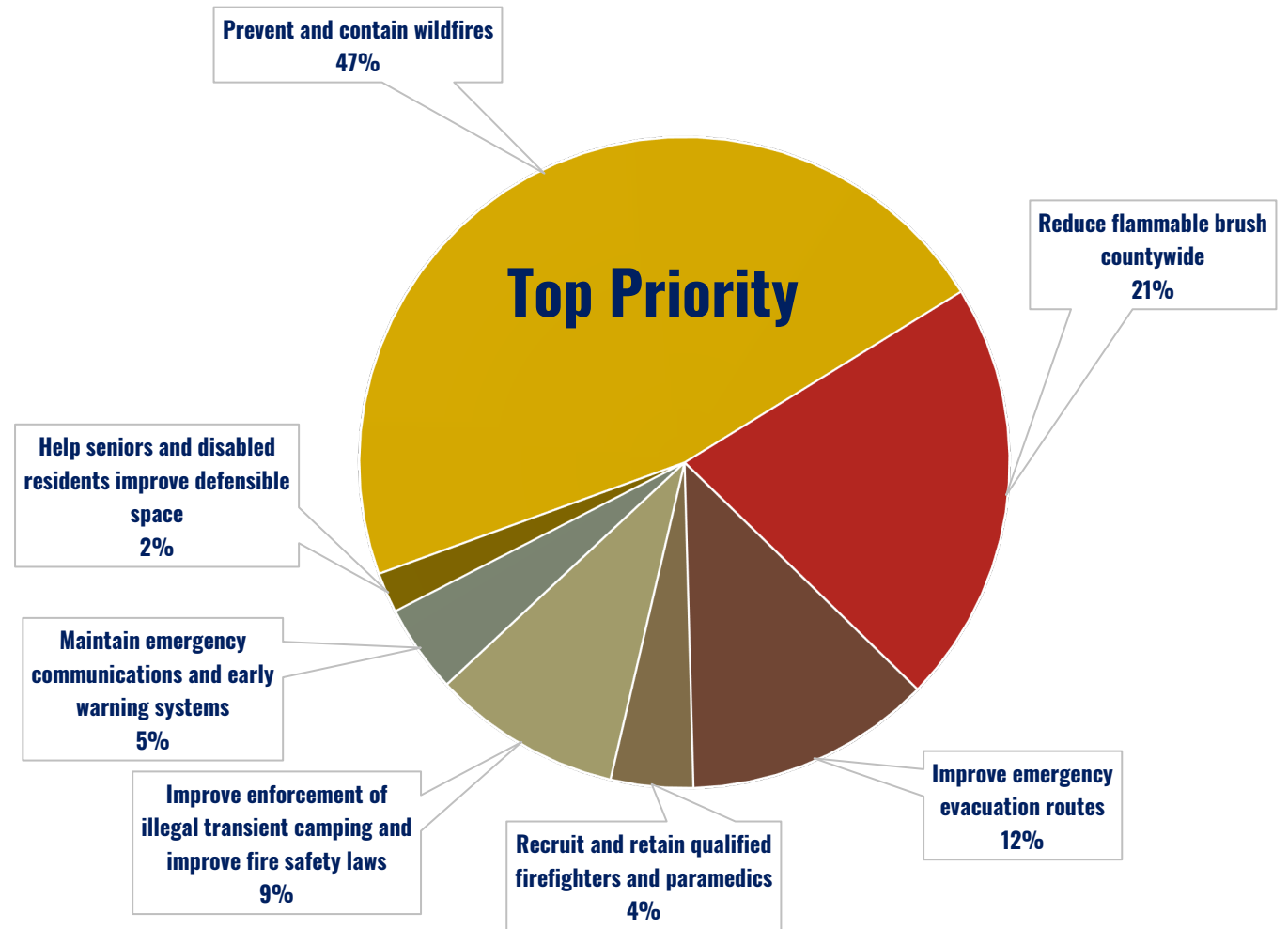
Homeowner and neighborhood groups included Ananda, Cascade Shores, Forest Springs Mobile Home Park, Friends of Banner Mountain, Lake of the Pines Association, Ponderosa Pines, and Rattlesnake Ridge.

Business groups included the Grass Valley Chamber of Commerce / Grass Valley Downtown Association, Nevada City Chamber of Commerce, and Economic Resource Council Executive Committee.

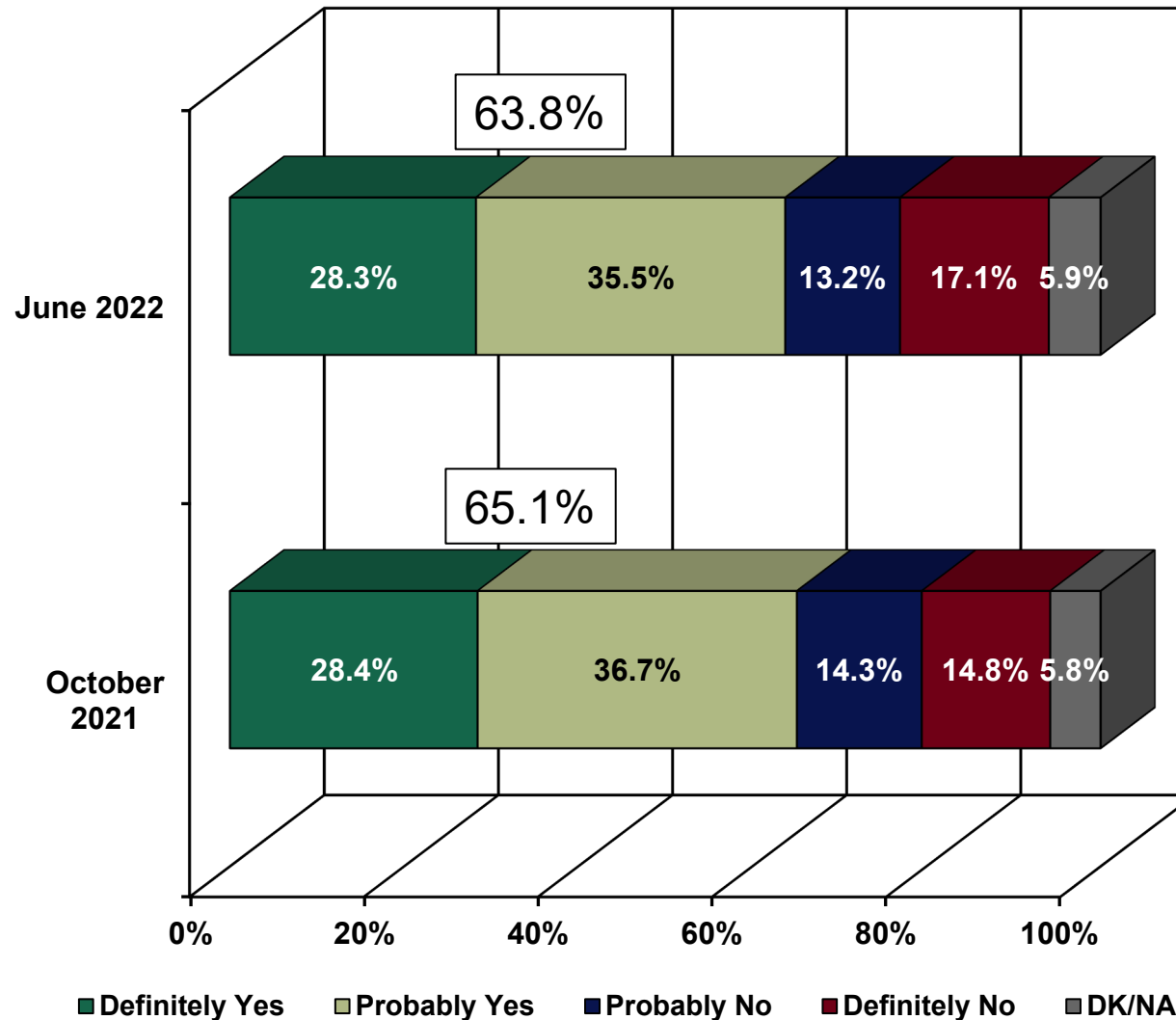
Other entities included the Nevada City Fire Advisory Committee, Firesafe Council Board, Tahoe Truckee Community Foundation staff, Grass Valley Rotary, Penn Valley MAC, Penn Valley Rotary, Nevada County Contractors' Association, and Yuba River Public Safety Cohort.

OES staff tabled at numerous community events including the Children's Health & Safety & Wildfire Preparedness Carnival, Earth Fest, Grass Valley Thursday Night Market, Home and Garden Show at the Nevada County Fairgrounds, Lake Wildwood Firewise Festival, Nevada City 4th of July Parade, Nevada City First Friday Art Walks, and Nevada City Summer Nights.

REQUEST A SPEAKER FOR YOUR ORGANIZATION!



Nearly 64% continue to be interested in local funding for Essential County Services



To maintain essential County of Nevada services, such as:

- wildfire prevention/ emergency preparedness;
- reducing flammable brush countywide;
- enforcing fire safety laws;
- preventing illegal campfires;
- helping seniors/ disabled residents maintain defensible space;
- enhancing emergency communications, early warning/ 911 response;
- improving evacuation routes; and
- for general government use;

with funds that cannot be taken by the State, shall the County of Nevada measure establishing a 1/2¢ sales tax, until ended by voters, providing \$12 million dollars annually, with citizen oversight/ audits, be adopted?

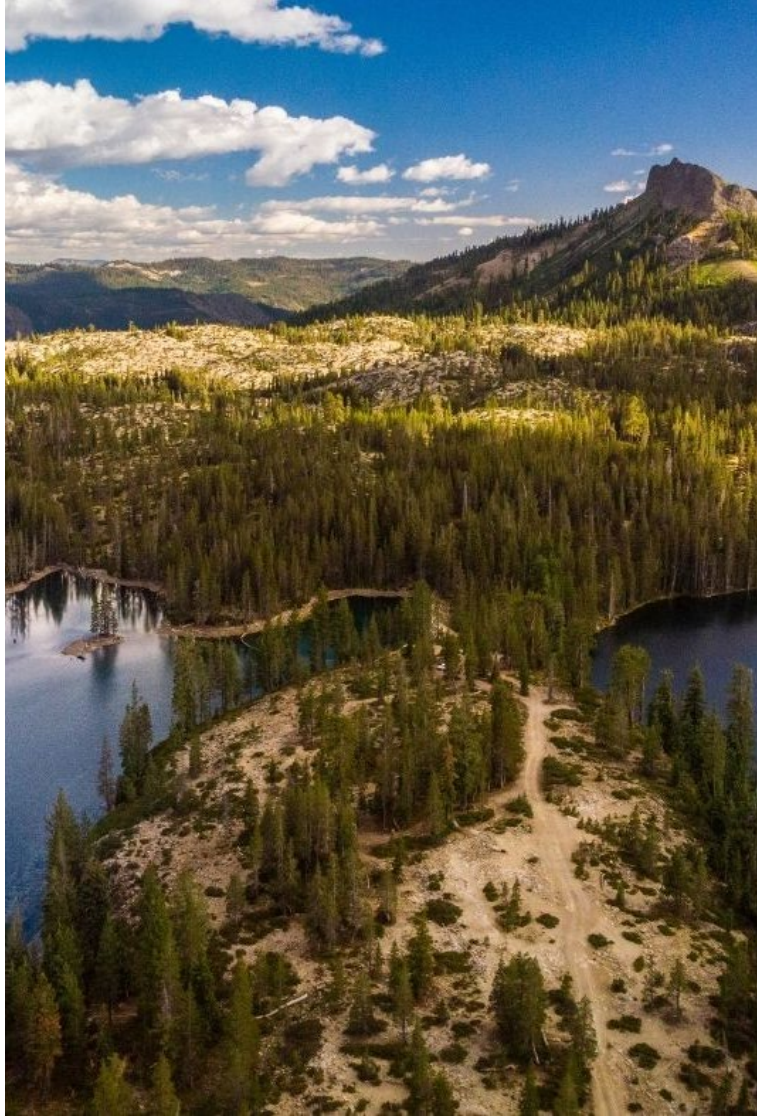
CEO Roundtable Reviewed Needs Assessment

Staff consulted with key county, municipal, and first responder stakeholders:

- Town of Truckee
- Truckee Fire Protection District
- Community Development Agency
- Health and Human Services Agency
- Office of Emergency Services
- Sheriff's Office
- Consolidated Fire District
- City of Grass Valley
- City of Nevada City

Received 62 projects and program ideas totaling \$36,000,000 per year.





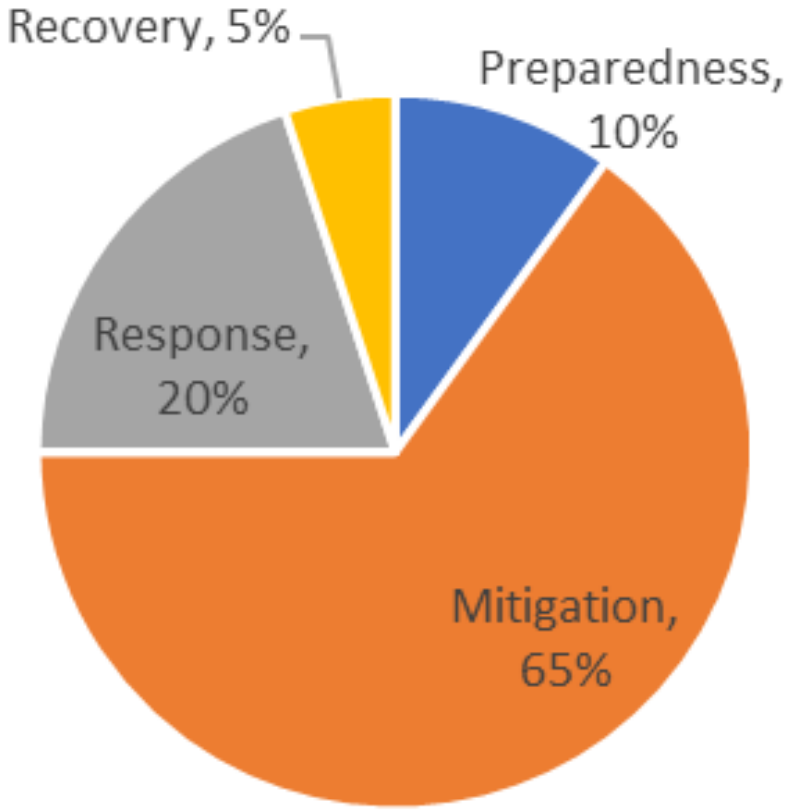
Together, we developed a draft expenditure plan **responsive to community priorities** and based on an estimated \$12 Million in annual sales tax revenue.

The CEO Roundtable also developed guiding principles, notably **Accountability, Transparency, and Regional Equity.**

Roundtable recommended target allocations to protect the community



Target Allocations



■ Preparedness ■ Mitigation ■ Response ■ Recovery

CEO Roundtable:

The proposed measure is responsive to the community's priorities **to save lives**, reduce the threat of **wildfires**, and improve all-hazards **disaster readiness** and **evacuation safety**.



IMAGE
COURTESY OF
PG&E®



The proposed measure would help prevent wildfires by *removing flammable brush countywide*

- from along critical evacuation routes,
- in our neighborhoods,
- around our cities and town, and
- near critical public infrastructure.

Because devastating, destructive wildfires have hit our region hard.

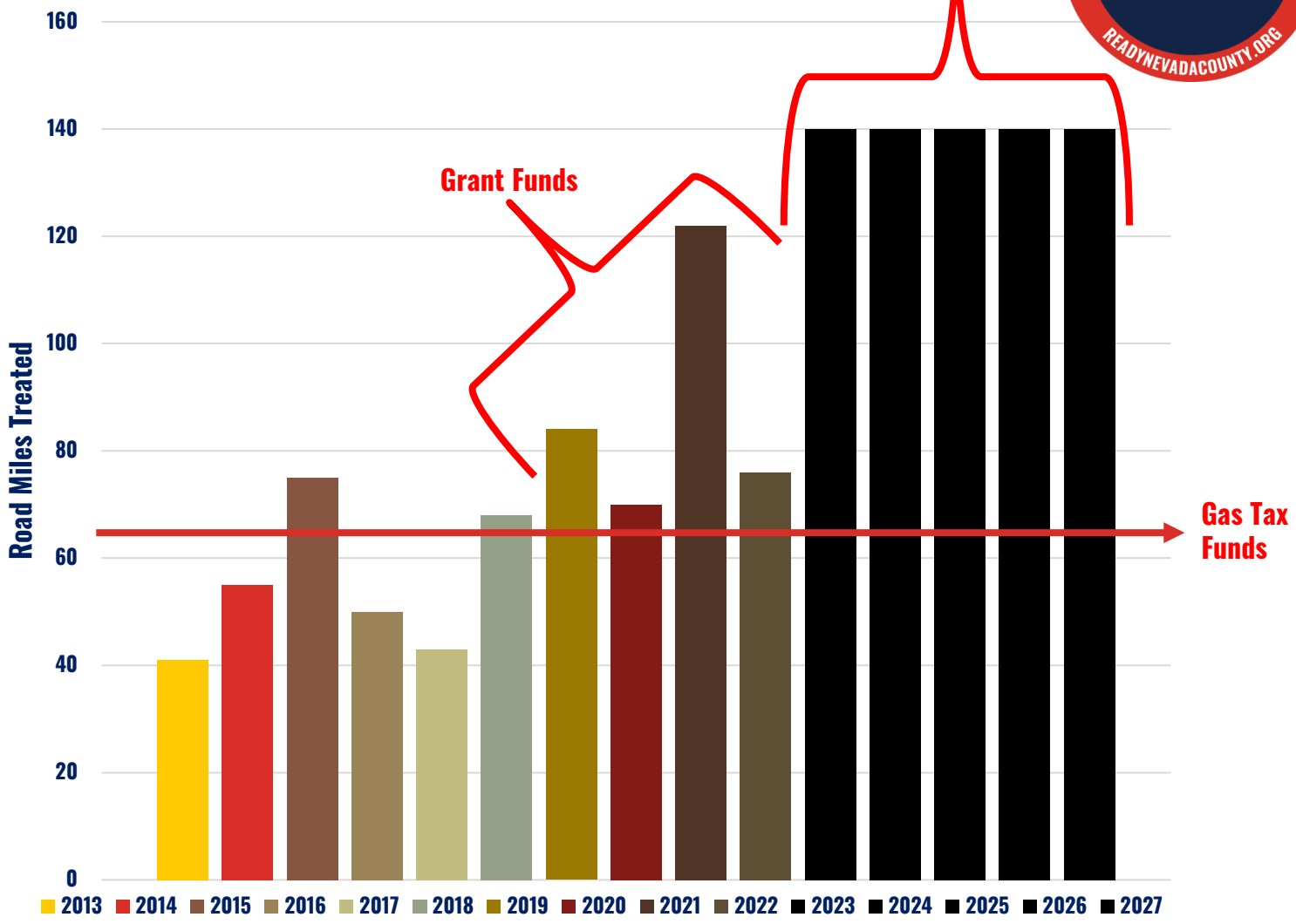


The proposed measure would provide *safer evacuation routes* to get residents out quickly and first responders in during an emergency.

Because wildfires are getting larger, faster, deadlier.



Roadside Vegetation Abatement



The County has 562 miles of maintained roads.

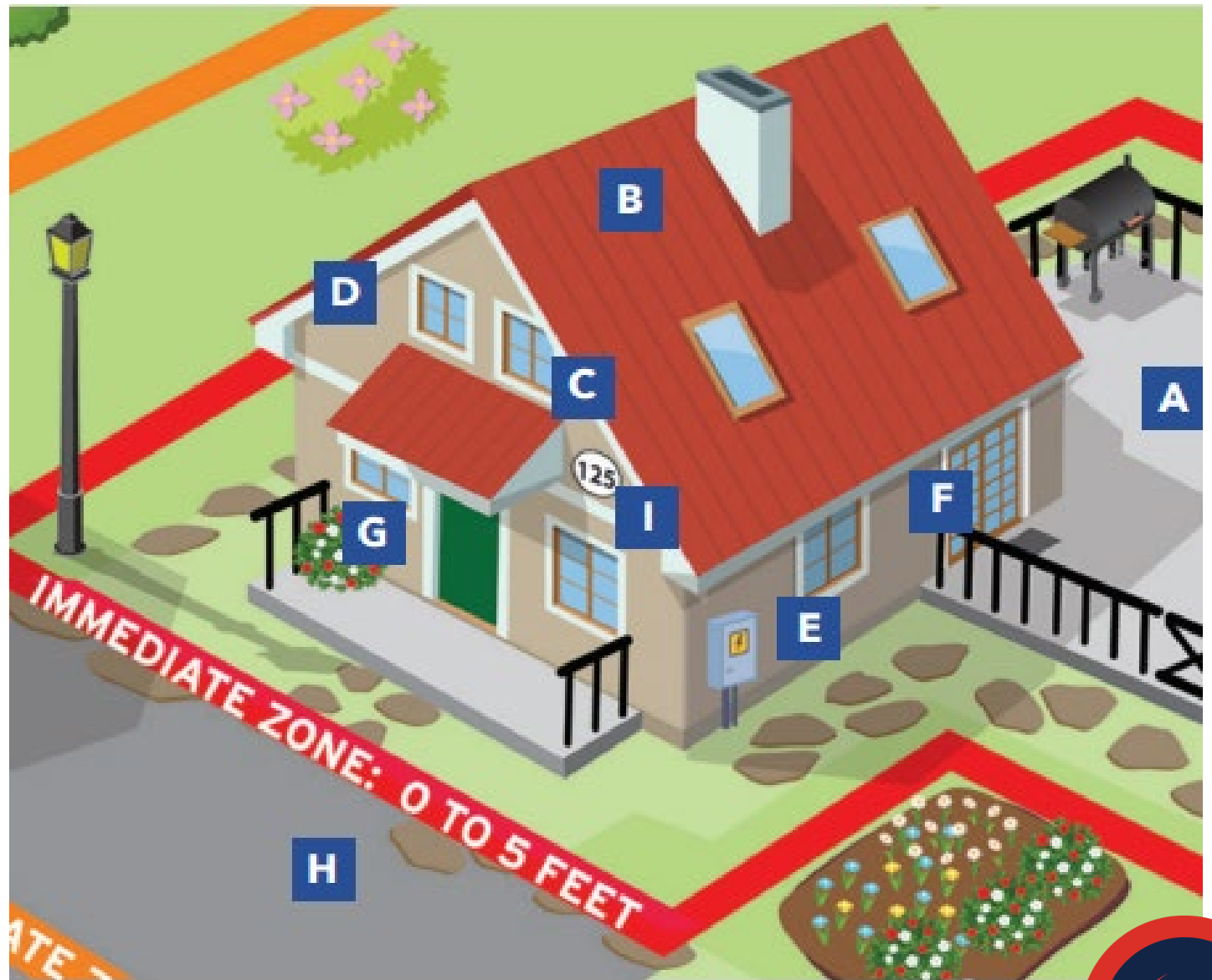
Today, we can remove flammable vegetation on 50-80 miles per year.

With episodic grant funds we have been able to treat up to 120 miles per year.

With sustainable, ongoing funds we could treat 140 miles per year.

The proposed measure would support defensible space programs.

... more education, inspection, enforcement, and abatement efforts.



The measure would help seniors and disabled residents *maintain defensible space* around their homes.

Including grant assistance for low-income seniors and people with disabilities.



The measure would provide free year-round green waste drop-off sites.

...more neighborhood chipping programs

...and local hand crews.



The proposed measure would help law enforcement to ensure our parks, forests, trails, and other public areas are monitored to prevent wildfires and are safe and secure for everyone.

Because illegal campfires increase the threat of wildfires countywide.

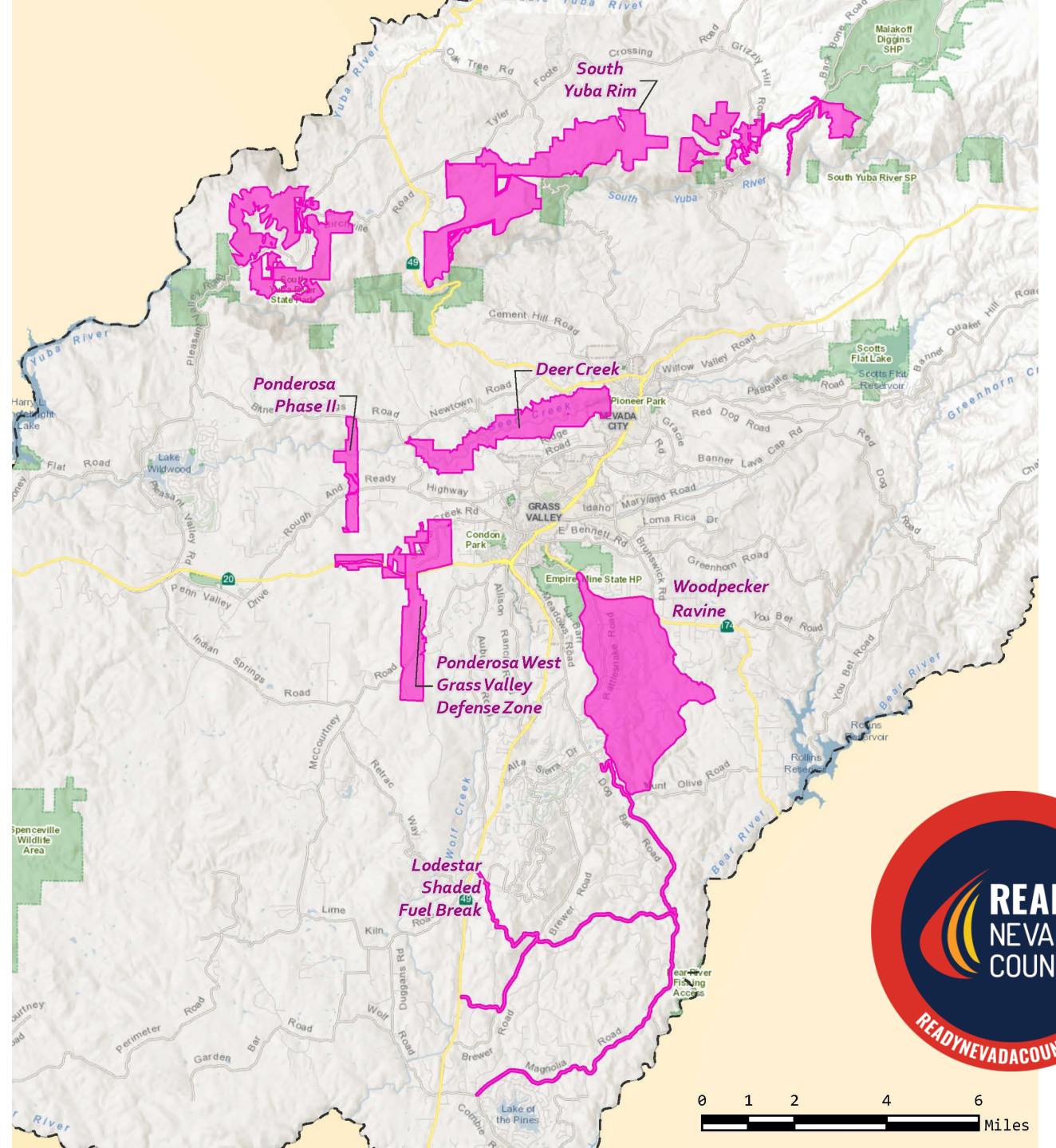


The proposed measure would fund shaded fuel breaks.

The Ponderosa West Grass Valley Defense Zone project treated over 1,000 acres, providing direct protection to downtown Grass Valley.

CAL FIRE says we need 8 more Ponderosa's in western Nevada County.

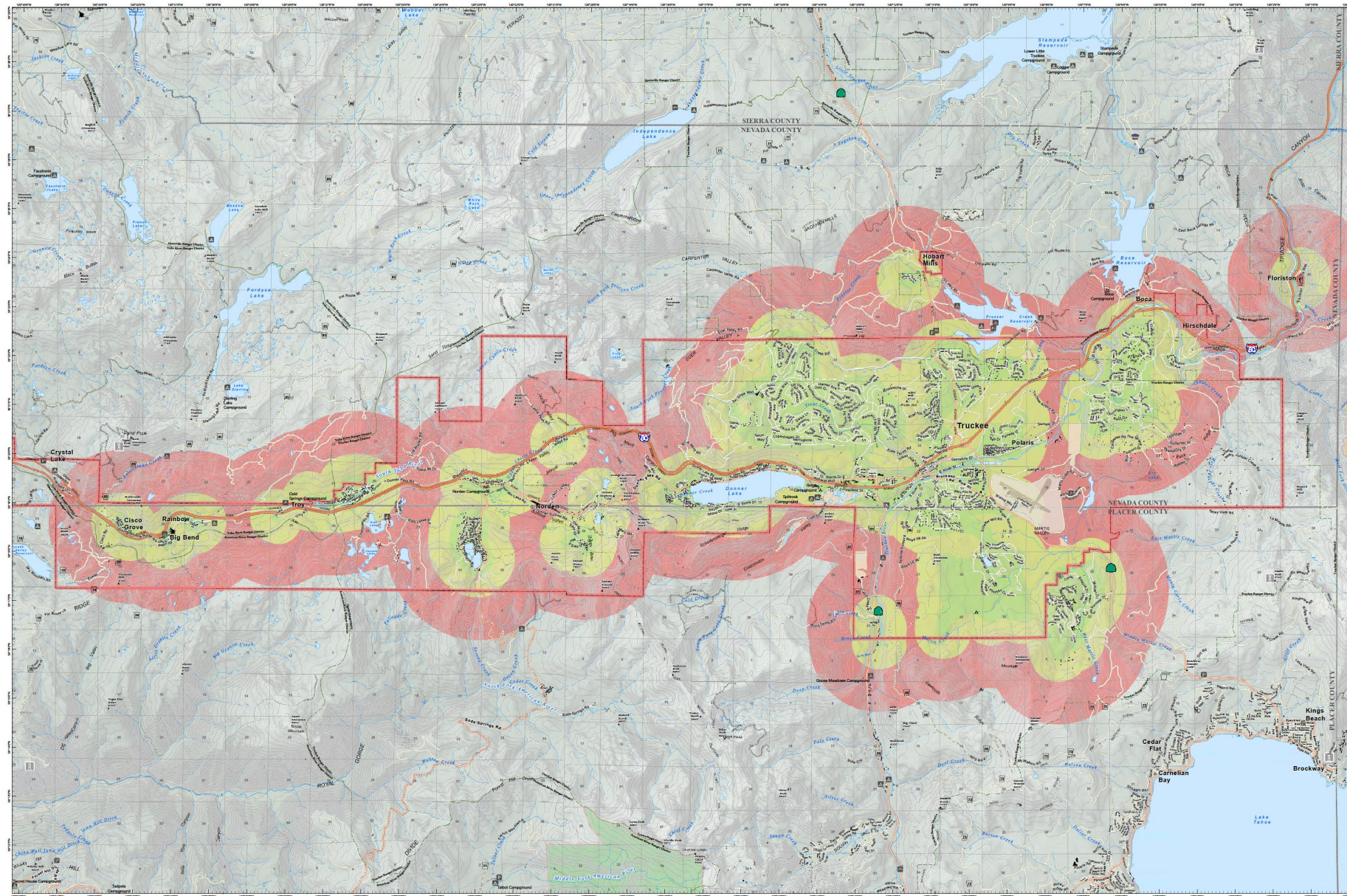
That must be maintained in perpetuity.



East County
has identified 8
critical fuel breaks
totaling 9,350 acres.

The estimated cost to
implement this work is
\$28 million.

That must be
maintained in
perpetuity to protect
our investment.



T r u c k e e C W P P
2 0 1 6

<ul style="list-style-type: none">FS Primary Road MarkerFire LookoutSummitsBuildingCampground	<ul style="list-style-type: none">CampsiteForest Service FacilityPicnic AreaRanger District OfficeTrailhead ParkingIntermediate Contour, 40 ft intervalsIndex Contour, 200 ft intervals	<ul style="list-style-type: none">Aqueduct/Penstock - UndergroundCanal/AqueductChannel in Water AreaDam Carrying RoadDam or Weir - Masonry	<ul style="list-style-type: none">Flame or Elevated PipelineSiphonStream - IntermittentStream - PerennialMajor Highways	<ul style="list-style-type: none">Major RoadsLocal StreetsRamps, Traffic CirclesAlleys, Driveways, WalkwaysMain Rail Line
---	---	--	---	---

Truckee Fire Protection District

Wildland Urban Interface

Zone
Core
Defense
Threat

Scale: 0 to 10 Miles / 0 to 10 Kilometers

www.deercreekgis.com

What are Shaded Fuel Breaks?

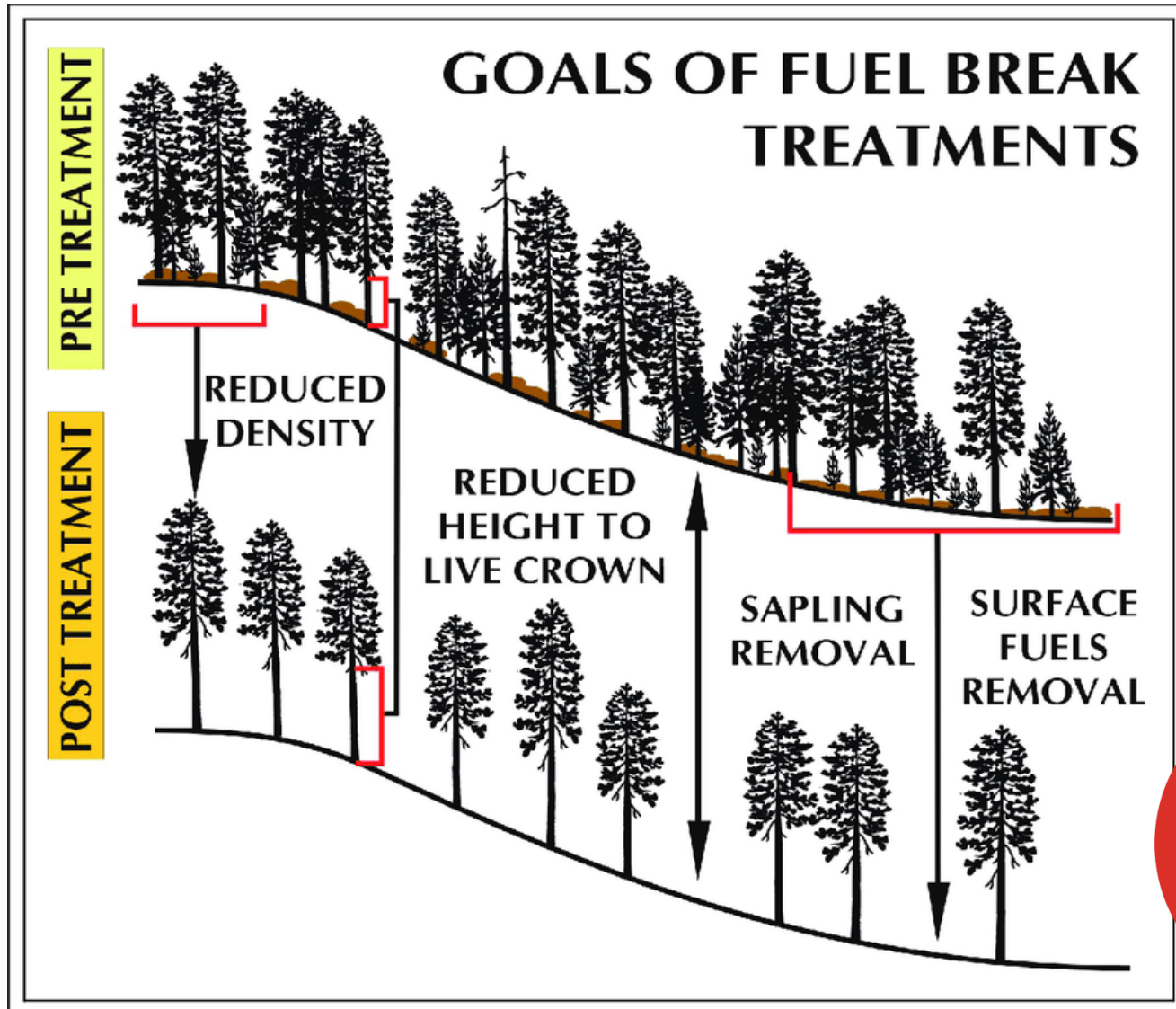
Large-scale fuels reduction projects that reduce the heat intensity of wildfires by reducing the amount of fuel.

Shaded Fuel Breaks reduce:

- The number of trees (stand density)
- The height to live tree-tops (live crown)
- The number of little trees (saplings)
- The amount of brush (surface fuels)

Shaded Fuel Breaks Are Not Fire Breaks:

- They are NOT areas where all vegetation has been removed down to mineral soil



The proposed measure would make Nevada County eligible for more State and Federal funding for wildfire prevention.

These grants typically require between 25% - 100% match.

Money for match allows the County to leverage and extend the resources available to do important projects like large-scale fuels reduction.

For every \$1 Million the County commits to match...

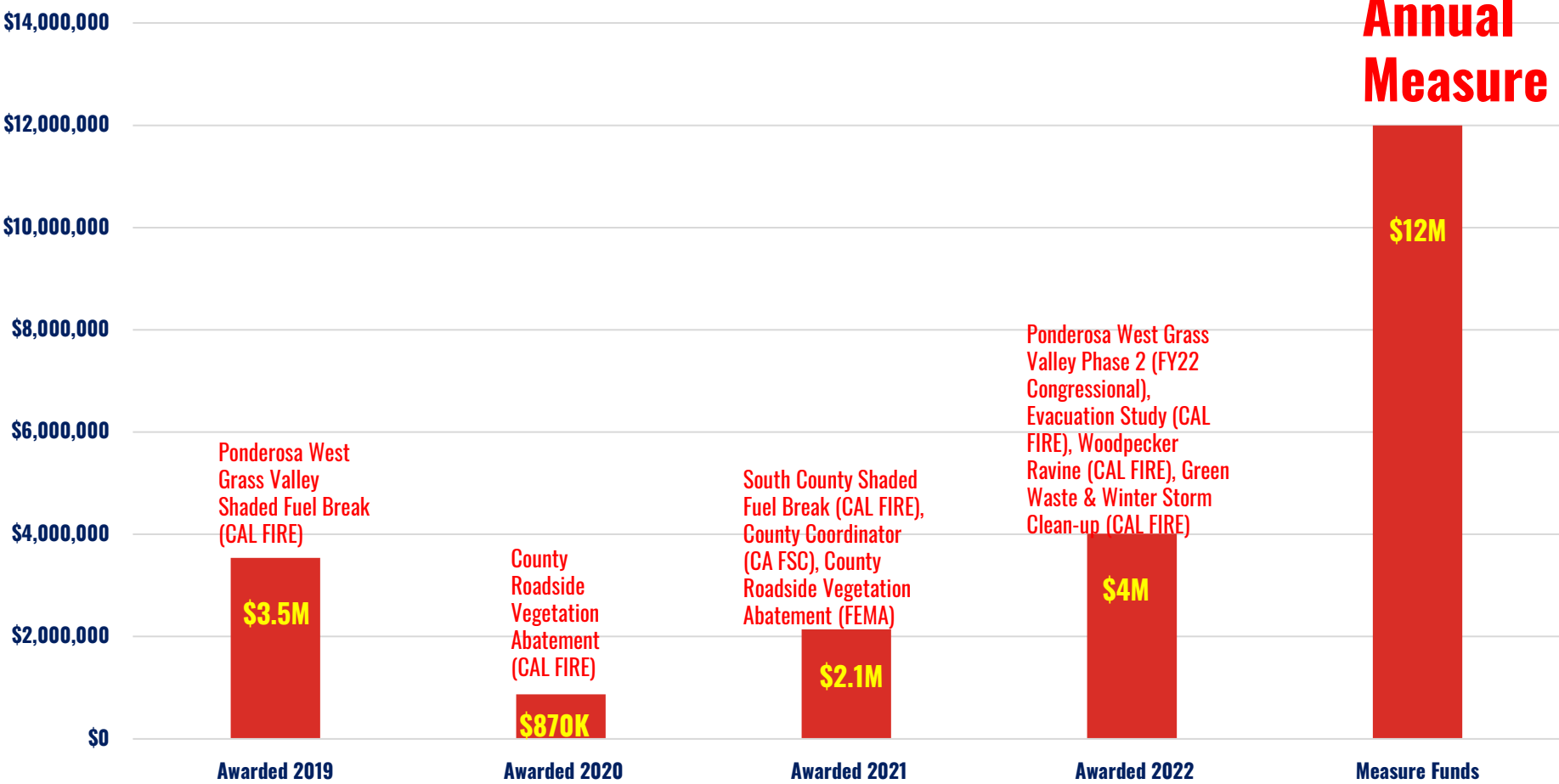


**We can secure
\$3 Million
in FEMA funding**



Grant Funding: A Good Start...

Grant Funding





Technical Advisory Committee (TAC)

Develops independent recommendations for annual expenditure plan

There will be an Eastern and a Western TAC that will meet separately and jointly, supported by County OES staff

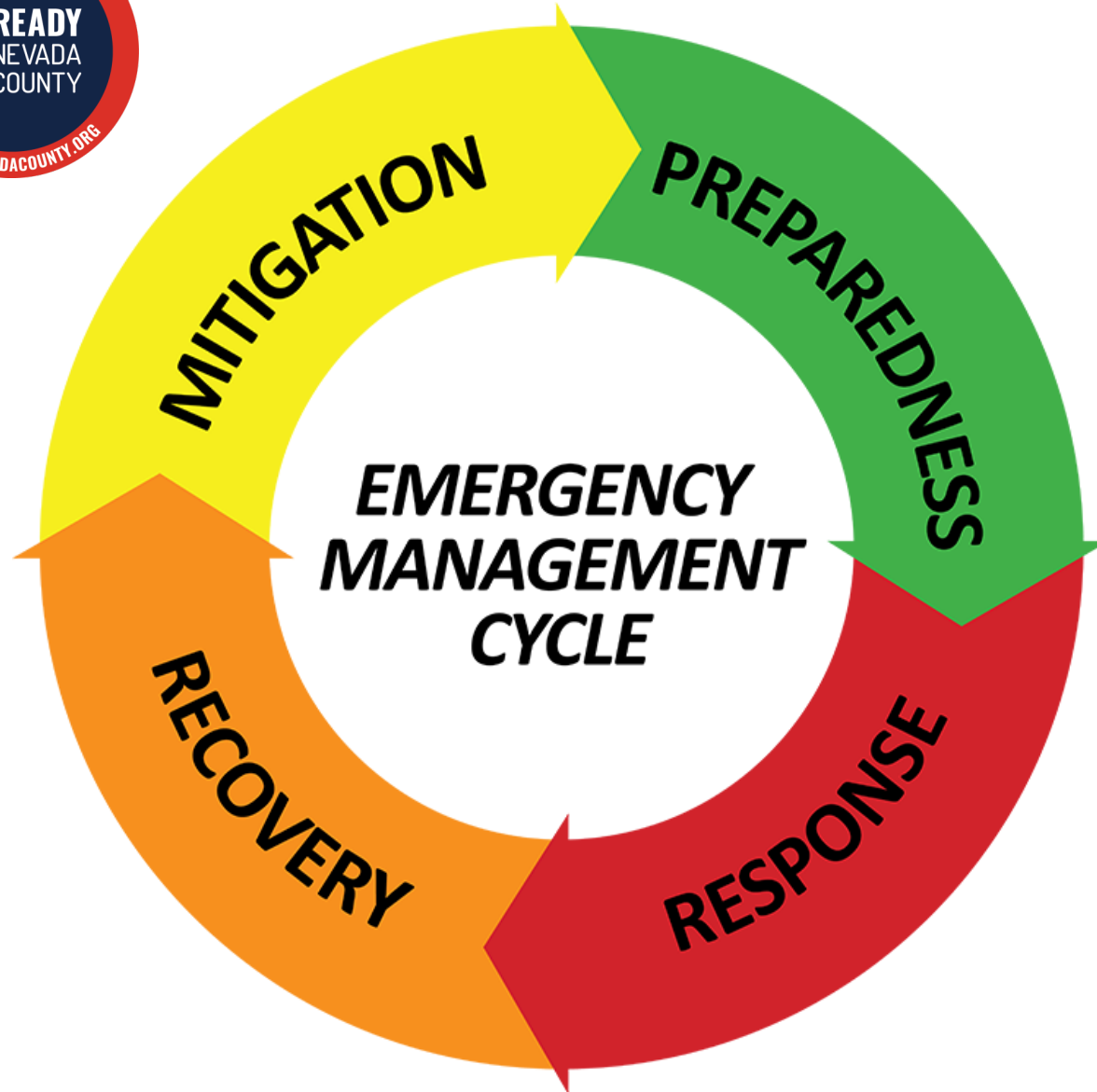


Citizen Oversight Committee

Ensures transparency and accountability

Annual reports to Public on sales tax collected, where money allocated and how used, findings of regular audits

Board appoints 7-members:
- Supervisor appoints 1 from district
- Board appoints 2 at-large



The proposed measure would address mitigation, preparedness, response and recovery.

A ½ cent sales tax would provide \$12,000,000 annually – locally controlled fund that the State can't take away.

Everyone will pay their fair share of this measure, including visitors and tourists who drive through or stay in Nevada County. The responsibility won't fall solely on residents.

This is NOT a home/property tax & it's not applied to food purchased as groceries or Rx drugs.

The proposed measure will be considered by the Board of Supervisors on:

Tuesday, August 9th, at 1:30PM at the Rood Center

Comments to the Board can be emailed no later than Monday, August 8th to:

BOS.PublicComment@nevadacountyCA.gov

