



GVR Glass Artists Club

Fused Glass Mold Catalog

Catalog of Available Studio Glass Fusing Molds

Fusing and slumping are two separate processes that have to be done in order. The flat fuse is first, as the glass needs to be heated at a higher temperature than for slumping. Usually, you start with the hottest and move to the coolest process when firing glasswork.

Before you start making your fused piece, you need to have chosen the mold you are going to use. This will make sure that you design and cut your glasswork to the right size.

Once fused, the glass needs to fit to the edges of the mold. If it hangs over more than 1/8" (3mm) it runs the risk of cracking or sticking to the rim of the mold during firing.

When designing your project to be placed into a mold, it is always best to incorporate 2 full sheets of glass into your project. If your project is less than 2 full sheets thick (6 mm) then, while slumping, the glass will stretch as it slumps down into the mold and becomes thinner and more fragile.

Each mold listed has the dimensions that you must keep in mind when cutting your glass. You can always go smaller but never larger.

We have duplicates of some molds. This catalog lists how many of each mold is available for members to use.

Some of the molds listed have several different sizes. Be sure to choose the mold number next to the size that you cut your glass.

If in doubt, visit our kiln/store room at West Center during regular store hours and a monitor will carefully show you the mold. Sorry, no touching though as molds have been primed and ready for firing a project.

Round Molds



Bullseye Round Slumper
008629

Donated by Catherine Bray



**CHOOSE MOLD FROM NUMBER BELOW:
12 in. x 1.6 in.—Mold # 48**

ONE AVAILABLE



Bullseye Drop Out Ring
008631

Donated by Catherine Bray



**CHOOSE MOLD FROM NUMBER BELOW:
10 5/8 in.—Mold # 43**

ONE AVAILABLE



Bullseye Classic
008723
On loan by Catherine Bray



**CHOOSE MOLD FROM NUMBER BELOW:
12.25 x 3 in.— Mold # 50
ONE AVAILABLE**



Bullseye Plain Plate
008721
On loan by Catherine Bray



**CHOOSE MOLD FROM NUMBER BELOW:
15 in. diameter x 1.2 in.—Mold # 34
ONE AVAILABLE**



Bullseye Ball Surface
Slumping Mold 008746
Donated by Catherine Bray

**CHOOSE MOLD FROM NUMBER BELOW:
5.75 diameter x 1.7 in. deep —Mold # 30
Two Available**



Bullseye Soup Bowl
008665
Donated by Catherine Bray

**CHOOSE MOLD FROM NUMBER BELOW:
9.5 x 1.6 in.—Mold # 68
TWO AVAILABLE**



Slumpys X-Small Firenze Mold
Mold SM-9037-XS
Donated by Catherine Bray

**CHOOSE MOLD FROM NUMBER BELOW:
6 x 1.5 in.—Mold # 75
TWO AVAILABLE**



Fuse Master Wave Form Bowl
FM1103
Donated by Catherin Bray

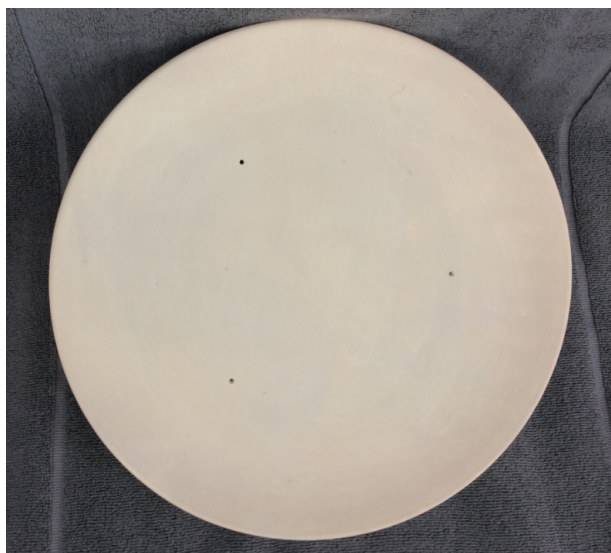
**CHOOSE MOLD FROM NUMBER BELOW:
11 in. diameter x 2.25 in. deep—Mold # 36
ONE AVAILABLE**



Round Platter
Donated by Ebba Andersen



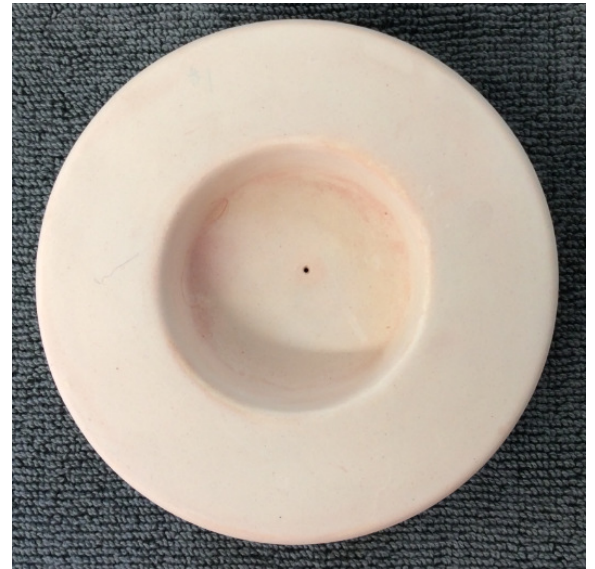
**CHOOSE MOLD FROM NUMBER BELOW:
13 in. diameter—Mold # 16
ONE AVAILABLE**



Round Platter
Donated by Ebba Andersen



**CHOOSE MOLD FROM NUMBER BELOW:
14.5 in. diameter—Mold # 27
ONE AVAILABLE**



Small Votive Mold
Donated by Catherine Bray

**CHOOSE MOLD FROM NUMBER BELOW:
4.5 in outer diameter x 2.5 in center
Mold # 42
ONE AVAILABLE**



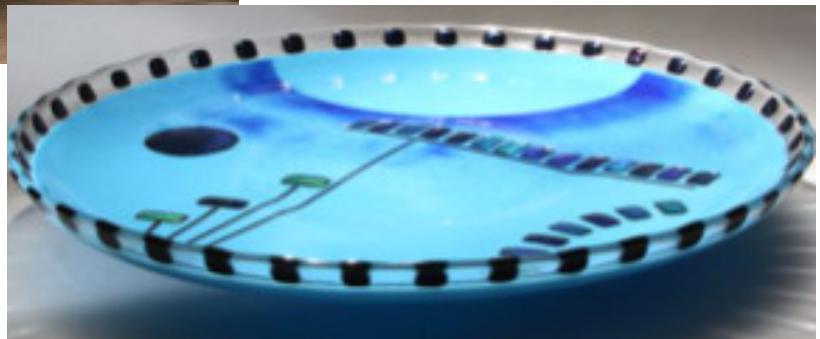
Round Platter
Slumping Mold
Donated by Ebba Andersen

**CHOOSE MOLD FROM NUMBER BELOW:
15 in. diameter—Mold # 24
ONE AVAILABLE**



Bowl Mold
Donated by Ebba Andersen

**CHOOSE MOLD FROM NUMBER BELOW:
11 in diameter
Mold # 18
ONE AVAILABLE**



Round Platter
Donated by Ebba Andersen

**CHOOSE MOLD FROM NUMBER BELOW:
6.25 in. diameter—Mold # 17
ONE AVAILABLE**



Star Bowl
Slumping Mold
Donated by Ebba Andersen

CHOOSE MOLD FROM NUMBER BELOW:

10 in diameter x 1.5 in. deep

Mold # 21

ONE AVAILABLE

Square and Rectangular Molds

FOUR DIFFERENT SIZES

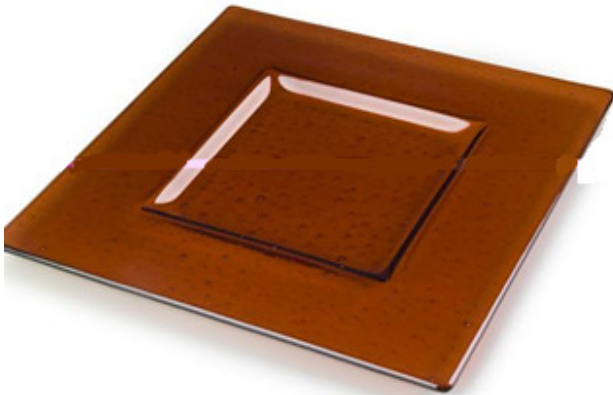


Bullseye—Square Slumper A
12 x 12 x 2.2 in—8637
10 x 10 x 1.9—8634
8.5 x 8.5 x 1.5 in—8635
5.5 X 5.5 X 1.3 in—8997

ALL ON LOAN BY CATHERINE BRAY
CHOOSE MOLD FROM NUMBER BELOW:
12 x 12—Mold # 52 (ONE AVAILABLE)
10 x 10—Mold # 49 (ONE AVAILABLE)
8.5 x 8.5—Mold # 67 (ONE AVAILABLE)
5.5 x 5.5—Mold #64 (FIVE AVAILABLE)

TWO DIFFERENT SIZES

Bullseye Square Platter
12 x 12 x 0.8 in.—8641: On loan by Catherine Bray
9.75x 9.75 x 0.8 in—8638: On loan by Catherine Bray



ONE OF EACH AVAILABLE
CHOOSE MOLD FROM NUMBER BELOW:
12 x 12 in.—Mold # 38
9.75 x 9.75—Mold # 44



Bullseye Rectangular Slumper
008924
On loan by Catherine Bray

**CHOOSE MOLD FROM NUMBER BELOW:
12.25 x 7.5 x 1.7 in.— Mold # 51
ONE AVAILABLE**

THREE DIFFERENT SIZES



**CHOOSE MOLD FROM NUMBER BELOW:
6.25 X 6.25 —Mold # 41—5 AVAILABLE
5 x 5—Mold # 32—6 AVAILABLE
3.25 x 3.25—Mold # 70—FOUR AVAILABLE**



Bullseye Square Plate
6.25 x 6.25 in.—8899: On loan by Catherine Bray
5 x 5 in.—8900 : On Loan by Catherine Bray
3.25 x 3.25 in.—8901: On loan by Catherine Bray

THREE DIFFERENT SIZES



Bullseye Square Slumper B

6.75 x 6.75 —8995: 1 on Loan by Catherine Bray, 2 on Loan by Lindas Touzeau and Reed

6 x 6 in. —8996: 1 Donated by Susan Stanford, 1 on Loan by Catherine Bray, 3 on Loan by Lindas Touzeau and Reed

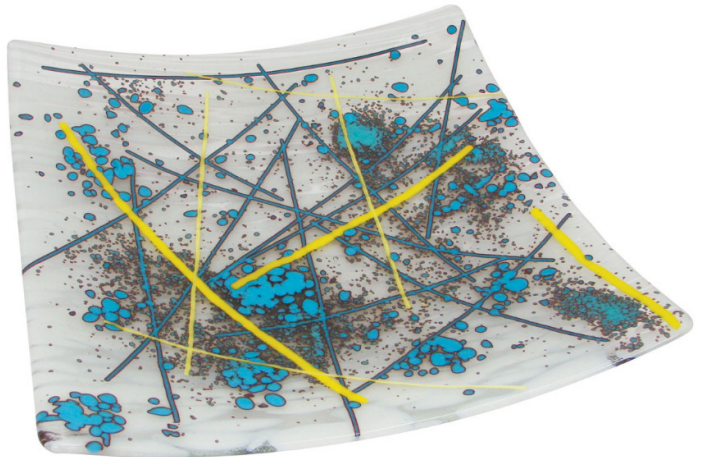
3.5 x 3.5 in.—8998: On Loan by Catherine Bray

CHOOSE MOLD FROM NUMBER BELOW:

6.75 x 6.75 in.—Mold # 69 (THREE AVAILABLE)

6 x 6 in.—Mold # 78 (FIVE AVAILABLE)

3.5 x 3.5 in.—Mold # 63 (THREE AVAILABLE)



Square Slumper

Creative Ceramics 958-295

7" L x 7" W

On Loan by Lindas Touaeau and Reed

CHOOSE MOLD FROM NUMBER BELOW:

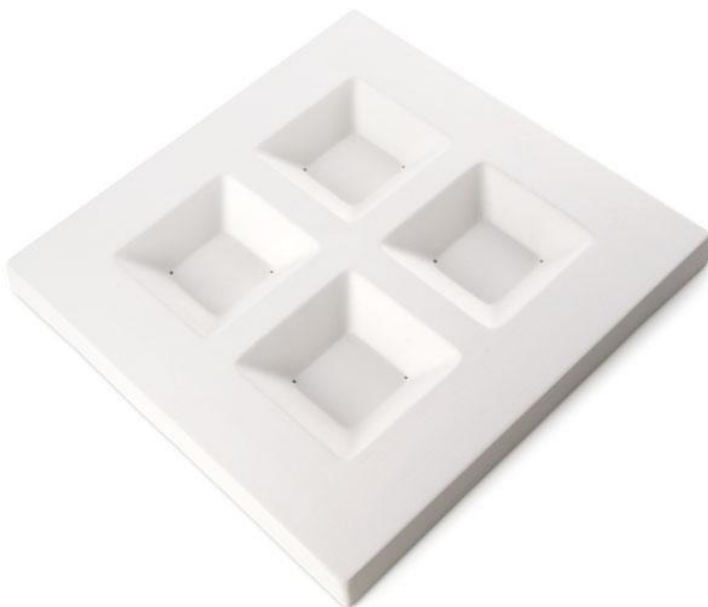
Mold # 88

ONE AVAILABLE



CHOOSE MOLD FROM NUMBER BELOW:
11.75 x 11.75 in.—Mold # 46
Center circle is 9.25 in. diameter
ONE AVAILABLE

Bullseye Yin-Yang Plate
 008341
 Donated by Catherine Bray



CHOOSE MOLD FROM NUMBER BELOW:
14 x 14 in.—Mold # 73
ONE AVAILABLE

Bullseye Soft Edge Four Square Platter
 008342
 Donated by Catherine Bray



TWO SIZES



Bullseye Channel Plate
13 x 4 in. — 008456
17 x 5 in.—008944

BOTH ON LOAN BY CATHERINE BRAY
CHOOSE MOLD FROM NUMBER BELOW:
13 x 4 in.—Mold # 72 (ONE AVAILABLE)
17 x 5 in.—MOLD # 71 (ONE AVAILABLE)



Bullseye One-Square Dish, 008934
Two on loan by Catherine Bray
Four GAC Property

CHOOSE MOLD FROM NUMBER BELOW:
3.5 x 3.5 in.—Mold # 65
SIX AVAILABLE



Bullseye Four Square Slumping Dish
008935
Donated by Catherine Bray

CHOOSE MOLD FROM NUMBER BELOW:
7 x 7 in.—Mold # 59
ONE AVAILABLE

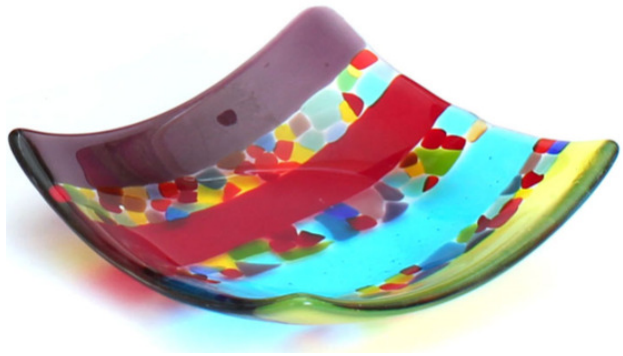


Bullseye Small Rectangle
008945
On loan by Catherine Bray

CHOOSE MOLD FROM NUMBER BELOW:
9.75 x 5.25 in.—Mold # 35
TWO AVAILABLE



Slumpys Small Deep Square
SM-9503
Donated by Catherine Bray



CHOOSE MOLD FROM NUMBER BELOW:
3 x 3 in.—Mold # 74
THREE AVAILABLE



Slumpys Soft Slope Bowl Mold
SM-9050
GAC

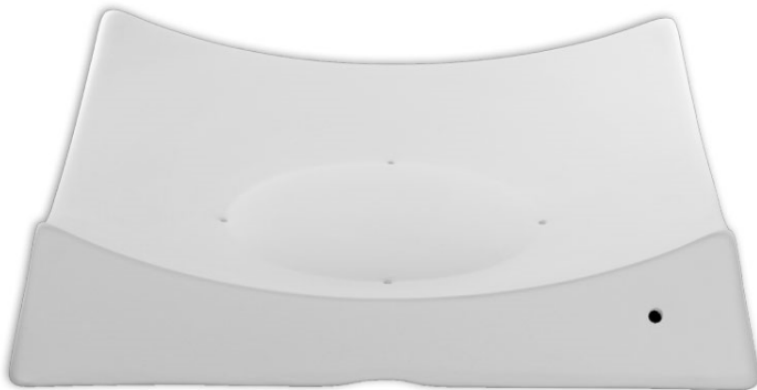


CHOOSE MOLD FROM NUMBER BELOW:
7.25 x 7.25 in.—Mold # 77
TWO AVAILABLE



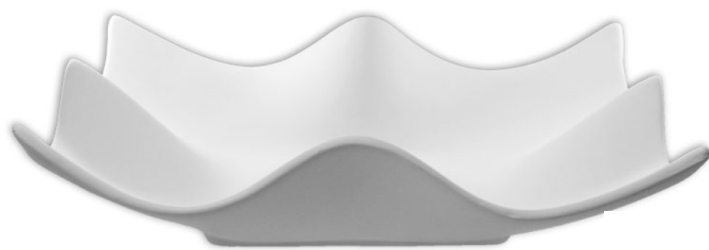
Square Slumper
Donated by Ebba Andersen

**CHOOSE MOLD FROM NUMBER BELOW:
10.5 in. x 10.5 in.—Mold # 26
ONE AVAILABLE**



Square Slumper
Slumpy's Mold #SM-9504
Donated by Ebba Andersen

**CHOOSE MOLD FROM NUMBER BELOW:
9.25 in. x 9.25 in. x 2 in.—Mold # 20
ONE AVAILABLE**



Slumpys Wavy Square Mold,
SM-2406
GAC



**CHOOSE MOLD FROM NUMBER BELOW:
11.5 x 11.5 in.—Mold # 45
ONE AVAILABLE**



Slumpys Rippled Square Mold, Sm.
SM-9056
9.25" L x 9.25" W
Donated by Pam Kale



**CHOOSE MOLD FROM NUMBER BELOW:
Use the template for this mold. Bring
paper to the Store Room to trace it.
—Mold # 82
ONE AVAILABLE**



Slumpys Rippled Square Mold, Lg.
SM 9057
11.25" L x 11.25" W
Donated by Pam Kale



CHOOSE MOLD FROM NUMBER BELOW:
Use the template for this mold. Bring paper to the Store Room to trace it.

Mold # 83
ONE AVAILABLE



Slumpys Ballantyne Mold
SM-9833
9.25" L x 9.25" W
Donated by Suzy Russell



CHOOSE MOLD FROM NUMBER BELOW:
Use the template for this mold. Bring paper to the Store Room to trace it.

Mold # 84
ONE AVAILABLE



Retro Bowl Mold
SM-143-P
7 1/4" L x 7 1/8" W
Donated by Susan Stanford

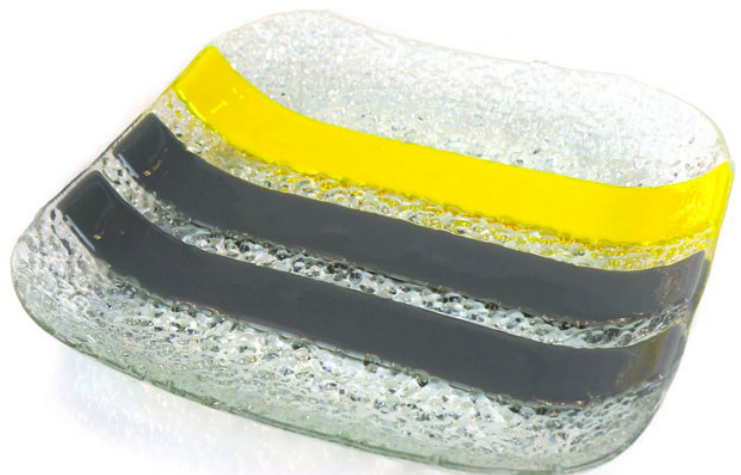


CHOOSE MOLD FROM NUMBER BELOW:
Use the template for this mold. Bring paper to
the Store Room to trace it.

Mold # 80
ONE AVAILABLE



Perfect Square Server
Slumpys SM-2306
10.25" L x 10.25"
Donated by Jayne Becker



CHOOSE MOLD FROM NUMBER BELOW:
Use the template for this mold. Bring paper
to the Store Room to trace it.

Mold # 28
ONE AVAILABLE



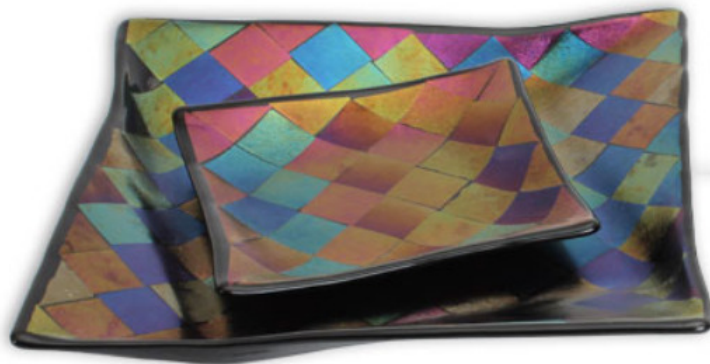
Jordan Mold
SM-9049-M
6" L x 6" W
GAC



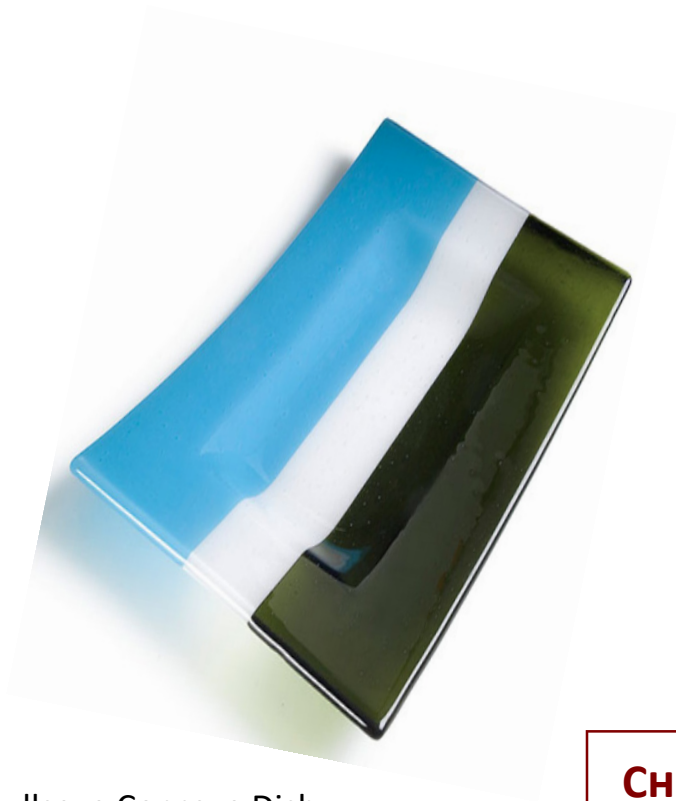
CHOOSE MOLD FROM NUMBER BELOW:
Mold # 87
FOUR AVAILABLE



Diamond Plate Mold
Slumpys SM-9287
6.25" L x 6.25" W
On Load by Linda Touzeau and
Linda Reed



CHOOSE MOLD FROM NUMBER BELOW:
Mold #5
THREE AVAILABLE



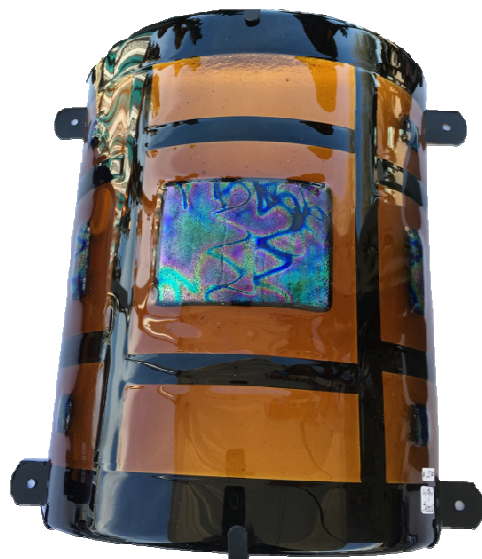
Bullseye Concave Dish
008933
On loan by Catherine Bray



**CHOOSE MOLD FROM NUMBER BELOW:
14 x 9.75 in. (inside 4x8")—Mold # 33
ONE AVAILABLE**

Specialty Molds

Bullseye Lamp Bender Conic
008740
On loan by Catherine Bray



CHOOSE MOLD FROM NUMBER BELOW:
Use the template for this mold. Bring paper to the Store Room to trace it.

Mold # 39
ONE AVAILABLE



CHOOSE MOLD FROM NUMBER BELOW:
Use the template for this mold. Bring paper to the Store Room to trace it.

7 1/4 in. x 6 1/8 in.—Mold # 66
ONE AVAILABLE

Bullseye Mini Lamp Bender
008964
Donated by Ebba Andersen



Curved Slumper
Slumpys Mold SM-6230
Donated by Catherine Bray

CHOOSE MOLD FROM NUMBER BELOW:
8.5 x 8 in.—Mold # 23
ONE AVAILABLE



Cut two sheets of glass using the template. Full fuse the two pieces and then slump into this mold. Not to be used with an actual wine bottle.

CHOOSE MOLD FROM NUMBER BELOW:
Mold # 56

Use the template for this mold. Bring paper to the Store Room to trace it.

ONE AVAILABLE

Wind Bottle Slumper
Donated by Catherine Bray



Bullseye Double Curve
008643
Donated by Catherine Bray

**CHOOSE MOLD FROM NUMBER BELOW:
16 x 14 x 2.9 in.— Mold # 40
ONE AVAILABLE**



Bullseye Four Candle Bridge
008902
Donated by Catherine Bray

**CHOOSE MOLD FROM NUMBER BELOW:
11.25 x 5.75 in.—Mold # 47
ONE AVAILABLE**



Bullseye Soap Dish
008981
2 Donated by Gail Brooks
2 On Loan by Catherine Bray

**CHOOSE MOLD FROM NUMBER BELOW:
6 x 4 in.—Mold # 60
FOUR AVAILABLE**



Soap Dish
Donated by Gail Brooks

**CHOOSE MOLD FROM NUMBER BELOW:
5.75 x 3.5 in.—Mold # 76
TWO AVAILABLE**



Business Card Holder
On loan by Catherine Bray



**CHOOSE MOLD FROM NUMBER BELOW:
3.5 x 5 in.—Mold # 37
ONE AVAILABLE**



Creative Paradise Lamp Shade
GM76
Donated by Catherine Bray



**CHOOSE MOLD FROM NUMBER BELOW:
12.75 in. max. diameter—Mold # 31
ONE AVAILABLE**

Draping and Drop Out Molds

HOW TO *measure* YOUR GLASS FOR DRAPING



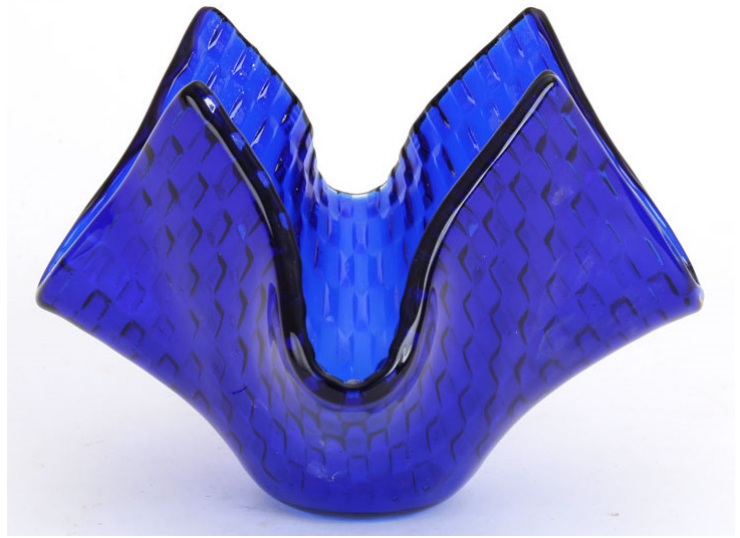
Measure up, over & down (point to point).
(This method takes the base measurement into consideration.)

BOTTOM RIM to TOP RIM × 2 + TOP DIAMETER
= MAX glass piece dimensions.

Subtract 2 inches from the MAX measurement of glass to compensate the pull of the glass during firing. This equals the maximum size piece of glass that the mold can hold.



Cut glass a minimum of 8" and a maximum of 12" - square or diameter.



Piccolo Cono
Medium Draping Mold
Slumpy's Mold SS-734
GAC

CHOOSE MOLD FROM NUMBER BELOW:
Mold # 29
TWO AVAILABLE



Cut glass a minimum of 6" and a maximum of 9" - square or diameter.



Diamond Tech International
Small Draping Mold
Mold 4973
2 Donated by Linda Touzeau
1 Donated by Barb Canfield
1 On loan by Barb Canfield

CHOOSE MOLD FROM NUMBER BELOW:
Mold # 81
FOUR AVAILABLE



Cut glass a minimum of 6" and a maximum of 14" - square or diameter.

Large Draping Mold
On Loan by Barb Canfield

CHOOSE MOLD FROM NUMBER BELOW:
Mold # 86
ONE AVAILABLE

Cut glass a minimum of 12" and a maximum of 15" - square or diameter.

Note on firing slip: Use
kiln firing paper between
mold and the glass



SWAG—BGM706
Large Draping Mold
GAC

CHOOSE MOLD FROM NUMBER BELOW:
Mold # 79
THREE AVAILABLE



or



Bullseye 008958
Drop-Out Mold
Donated by Catherine Bray

**CHOOSE MOLD FROM NUMBER BELOW:
10 in. x 10x in.—Mold # 19
ONE AVAILABLE**

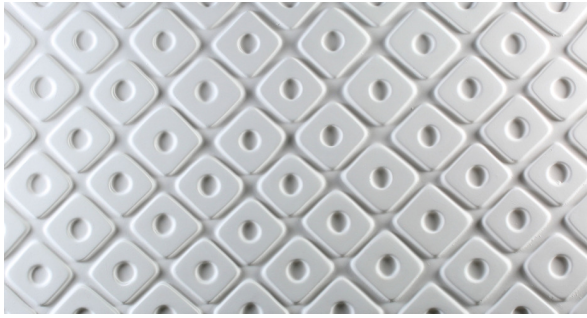
Texture Molds

To use these molds, you must first full fuse two full sheets of glass together. All decorative pieces should be added to the two sheets of glass (in the center of the design only) prior to the full fuse. However, where you have 3 thicknesses of glass, you may find that the texture from the mold will not appear.

You can place frit into the texture of the mold before slumping your 2 sheets of full-fused glass on to the mold.

You cannot add any glass and refire an already textured piece (other than slumping into a platter or bowl). Either you will lose the texture and/or create large, unwanted bubbles in your piece .





Note: You must fuse two sheets of glass together before slumping your glass on this mold.



Be Square Texture Mold
Creative Paradise Mold DT07
Donated by Catherine Bray

**CHOOSE MOLD FROM NUMBER BELOW:
13 x 7 in.—Mold # 53
ONE AVAILABLE**



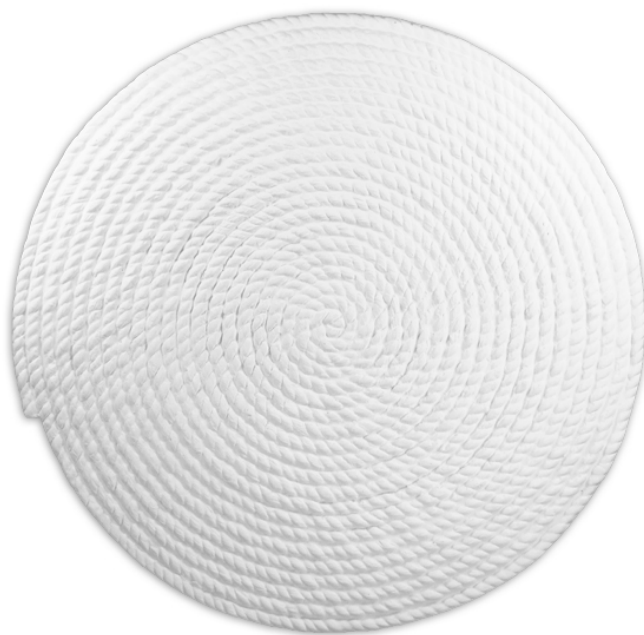
Note: You must fuse two sheets of glass together before slumping your glass on this mold.



Art Nouveau Texture Mold
Creative Paradise Mold DT14
Donated by Catherine Bray

**CHOOSE MOLD FROM NUMBER BELOW:
13.25 x 7 in.—Mold # 54
ONE AVAILABLE**

Note: You must fuse two sheets
of glass together before slumping
your glass on this mold.



Rope Fusing Tile
For Texturing Glass
Slumpy's 9777
Donated by Estelle Hermes

**CHOOSE MOLD FROM NUMBER BELOW:
12 5/8 in. Diameter—Mold # 85
ONE AVAILABLE**

Frit Casting Molds

Glass frit casting molds are used by pouring frit or scrap glass into the mold and firing the glass to form a glass shape.

FILLING THE MOLD: Casting molds must be primed prior to use and you should avoid touching the inside of the mold when handling as this will remove some of the primer. Always brush any frit from the edges of the mold before firing.

The glass level will drop as it melts into the mold. Take care to be sure you have enough scrap glass or frit to fully fill the mold. The smaller the pieces of glass you use, the less it will shrink. On average, the finished casting will be about half the depth of the loosely filled mold. A mold filled with powder or fine frit will yield the thickest finished piece, although it doesn't stay transparent but will turn slightly opaque making the finished casting look more like alabaster than glass. Scrap glass and/or coarse frit will produce the thinnest piece but will remain transparent.

These two examples should guide you in what type of glass to use and the procedure for filling the mold.

These molds can be checked out at our club store for one week and then returned to the kiln room for firing.



Champagne Glasses
Donated by Linda Touzeau

**CHOOSE MOLD FROM NUMBER BELOW:
3-3/8 x 3-3/8 in.—Mold # 22
ONE AVAILABLE**



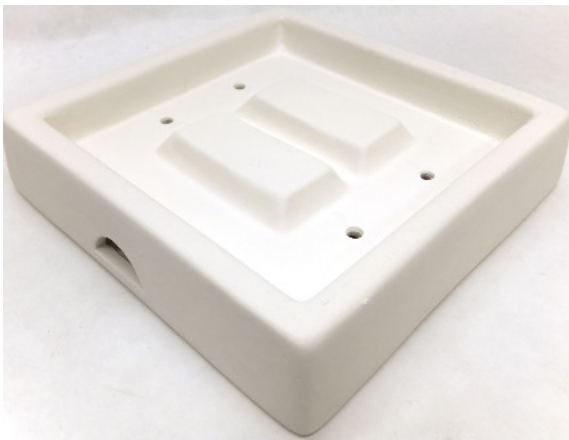
Jumping Bean-Cabochon Mold
Donated by Catherine Bray

**CHOOSE MOLD FROM NUMBER BELOW:
Each Cavity 3/4 x 9/16 in.— Mold # 62
ONE AVAILABLE**



Feather **Frit Casting** Mold
Firelite Forms Mold 7033
Donated by Susan Stanford

**CHOOSE MOLD FROM NUMBER BELOW:
10" x 3" x 0.75" Deep—Mold # 61
ONE AVAILABLE**



Double Rocker Switch Plate
Frit Casting Mold
IDM Ceramics
Donated by Catherine Bray

**CHOOSE MOLD FROM NUMBER BELOW:
5.25 x 5.25 x 0.75 in.—Mold # 57
TWO AVAILABLE**



Single Rocker Switch Plate
Frit Casting Mold
 IDM Ceramics
 Donated by Catherine Bray

**CHOOSE MOLD FROM NUMBER BELOW:
 5 x 3 -3/8 x 5/8 in.—Mold # 55
 TWO AVAILABLE**



Single Rocker Switch Plate
Frit Casting Mold
 IDM Ceramics
 Donated by Catherine Bray

**CHOOSE MOLD FROM NUMBER BELOW:
 5.25 x 3-3/8 x 5/8 in.—Mold # 58
 TWO AVAILABLE**