



# PROJECT **BROCHURE**

2023

## About Big Homes

Big Homes is one of the fastest growing real estate firms in Abuja, Nigeria. It has been five years since its inception but in that period, the firm has been able to establish itself with certain core values; customer satisfaction, integrity, innovation, flexibility, honesty, and quality.

Big Homes entry into the Abuja real estate scene aims to provide potential clients with innovative and contemporary living spaces as well as to impact the real estate scene positively.

The Big Homes brand continues to evolve and seek better ways to serve our customers and contribute our quota to the real estate scene in Nigeria.

## Our Existing projects

- |                 |                  |                       |                       |
|-----------------|------------------|-----------------------|-----------------------|
| ■ Maxim's Court | ■ Mejor Casa     | ■ Christy's Court     | ■ Sapphire Court      |
| ■ Muna's Court  | ■ Gibson's Court | ■ Ivy's Court         | ■ Richy's Court 1 & 2 |
| ■ Bello's Court | ■ Black Roof     | ■ Z project           |                       |
| ■ Pearl's Court | ■ Aurora's Court | ■ Mustard Court 1 & 2 |                       |

# Table of Content

Muna's Court	1
Gibson's Court	5
Pearl's Court	9
Bello's Court	13
Mejor Casa	17
Black Roof	21
Maxim's Court	25
Sapphire Court	29
Mustard 1&2	33
Richy 1&2 Court	37

# MUNA'S COURT



MABUSHI





Nothing beats an affordable, beautiful and luxurious terrace located in Mabushi, a serene and prime area in Abuja. Muna's court consists of six units (four bedrooms for each unit). It has been beautifully designed to comfortably suit six families with an ample parking space which can accommodate three cars per unit. The unit offers a suitable living condition for every occupant and is well equipped with an armed security team. In a bid to give our clients the feel of modernization, each unit has an automated door at the main entrance and all bedrooms are fully en-suite. Over the years, Big Homes has been committed to ensuring green, healthy and luxurious living and this have been the trademark of our projects. Hence, Muna's court was thoroughly designed with meticulous attention to the comfort and satisfaction of our clients regardless of their social class.



## FEATURES

- Prime location in Mabushi
- 6 units of 4 bedrooms
- German stamped floors
- 24 hours power supply
- Tiled road in and out of the building
- All bedrooms are en-suite
- Ample parking space
- Uniformed security team

## PRICE & PAYMENT PLAN

**SOLD  
OUT**



Prime  
Location



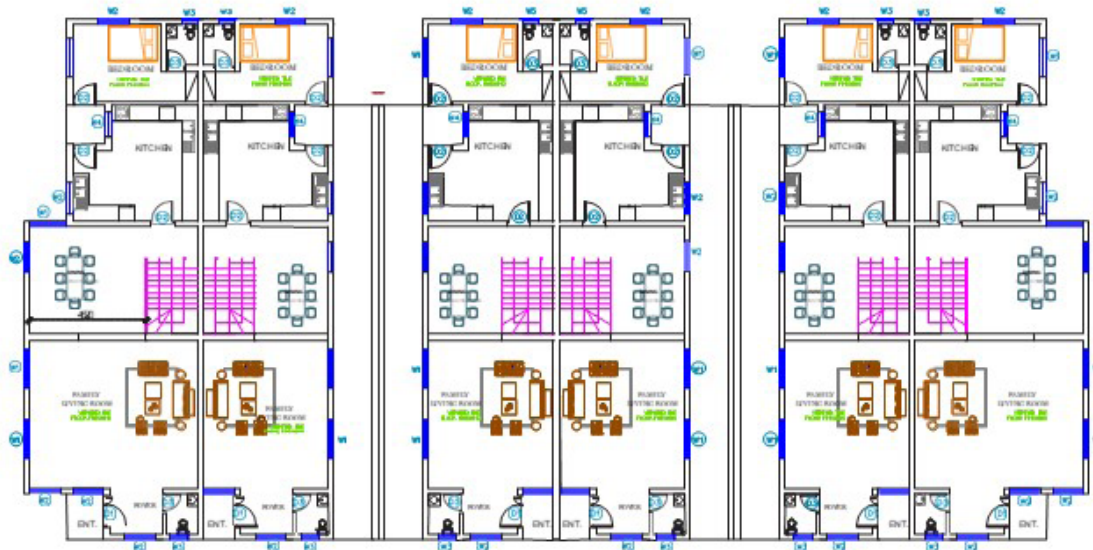
Good  
Investments



Quality  
Houses



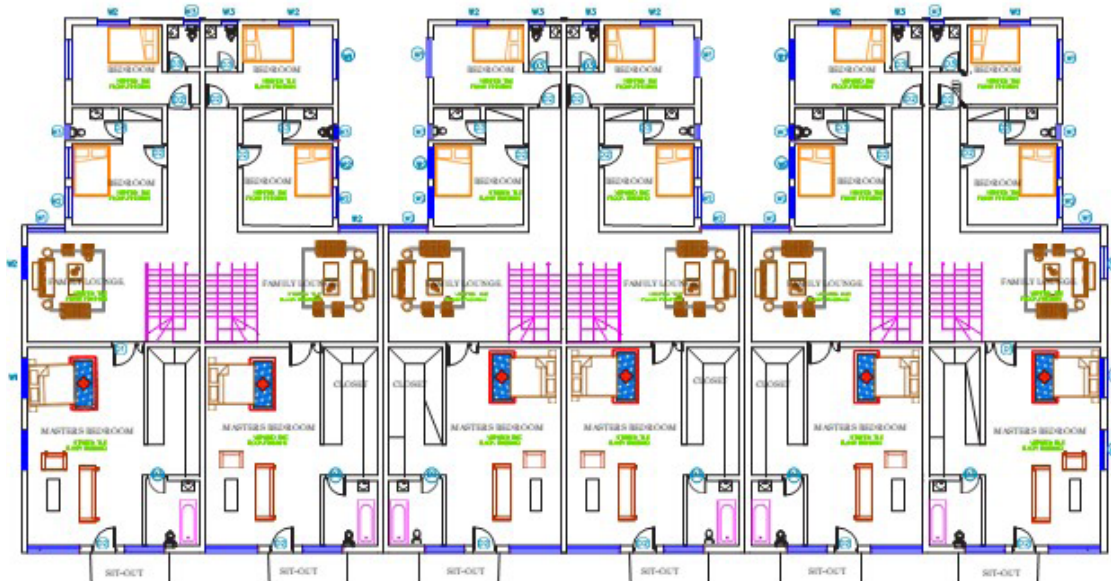
# FLOOR PLANS



GROUND FLOOR

## LEGEND

- LIVING LOUNGE / DINING - 57SQM
- KITCHEN - 21SQM
- B/Q BEDROOM - 12SQM



FIRST FLOOR

## LEGEND

- FAMILY LOUNGE - 20SQM
- BEDROOM 2 - 14SQM
- WC / SH - 3SQM
- BEDROOM 3 -13SQM
- WC / SH - 3SQM
- MASTER BEDROOM - 43SQM
- STAIR HALL / CIRCULATION AREA-12SQM
- BALCONY - 6SQM

# GIBSON'S COURT



MABUSHI





You would love this delightful, luxurious and captivating detached duplex located in a prime location and a serene environment in Mabushi. Gibson's court is a beautiful mini estate with total land size of 9,937.55 sqm built for 20 families with each standalone made up of five bedrooms, a mini one-stop shop, a playground which is 1,610.26sqm and also a very spacious parking space.

Talking about the natural and elegant environment for your convenience. Imagine drifting off to sleep to the subtle sound of nature and awakening to a spectacular sunrise. Gibson's court is the true definition of Beauty and Elegance that gives you the lifestyle you deserve.





## FEATURES

- Prime location in Mabushi
- 5 bedroom stand alone for 20 families
- Mixed used estate for both commercial and residential purpose
- A mall inside the estate
- All bedrooms are en-suite
- Enormous parking pace
- Automated security door
- 24hrs power supply
- Uniformed security team

## PRICE & PAYMENT PLAN

**Advanced Shell: N120,000,000**  
**Fully Finished: N150,000,000**

**50% down payment and spread balance  
between twelve months**



Prime  
Location



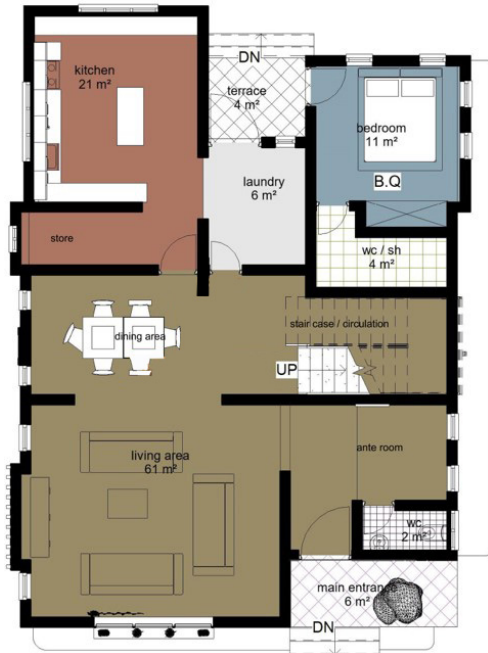
Good  
Investments



Quality  
Houses

# FLOOR PLANS

## GROUND FLOOR



## LEGEND

- FAMILY LOUNGE - 20SQM
- BEDROOM 2 - 14SQM
- WC / SH - 3SQM
- BEDROOM 3 - 13SQM
- WC / SH - 3SQM
- MASTER BEDROOM - 43SQM
- STAIR HALL / CIRCULATION AREA-12SQM
- BALCONY - 6SQM

## FIRST FLOOR



## LEGEND

- BALCONY - 11SQM
- FAMILY LOUNGE - 34SQM
- BEDROOM 1 - 29SQM
- BEDROOM 2 - 28SQM
- BEDROOM 3 - 25SQM

## SECOND FLOOR



## LEGEND

- MASTER BEDROOMS - 44SQM
- WC / SH - 7 SQM
- CLOSET -



# PEARL'S COURT



KATAMPE





This magnificent, captivating & luxurious mini estate of four bedroom fully detached duplex (stand alone) for 7 families is a fantastic masterpiece that is located in a beautiful serene, clean and well developed environment at Katampe Extension with a total land size 3,200sqm.

It provides you with natural atmosphere for your calm & quite time for meditation & relaxation. This court has been designed with automated entrance door, electric fence, constant water supply, accessible roads.

This court is also very secured as there is a standby uniformed security team on site.

Pearl's court is a perfect definition of TOP-NOTCH & UNIQUENESS which is an affordable luxury with a flexible payment plan,

Big Homes provides you with fantastic properties that gives you the standard of the Luxury lifestyle you desire. So when you Think Luxury, Think PEARL'S COURT!





## FEATURES

- 5 bedrooms each for 7 families
- Green area
- Easily Accessible
- Spacious compound
- All rooms en-suite
- Uniformed security personnel
- Ample parking space
- Electric fence
- Tarred roads
- 24/7 power supply
- less than 5mins to the nearest mall etc

## PRICE & PAYMENT PLAN

**Advanced Shell: N85,000,000**  
**Fully Finished: N100,000,000**

Outright payment or 50% minimum  
deposit and balance spread within  
twelve months



Prime  
Location



Good  
Investments



Quality  
Houses

# FLOOR PLANS

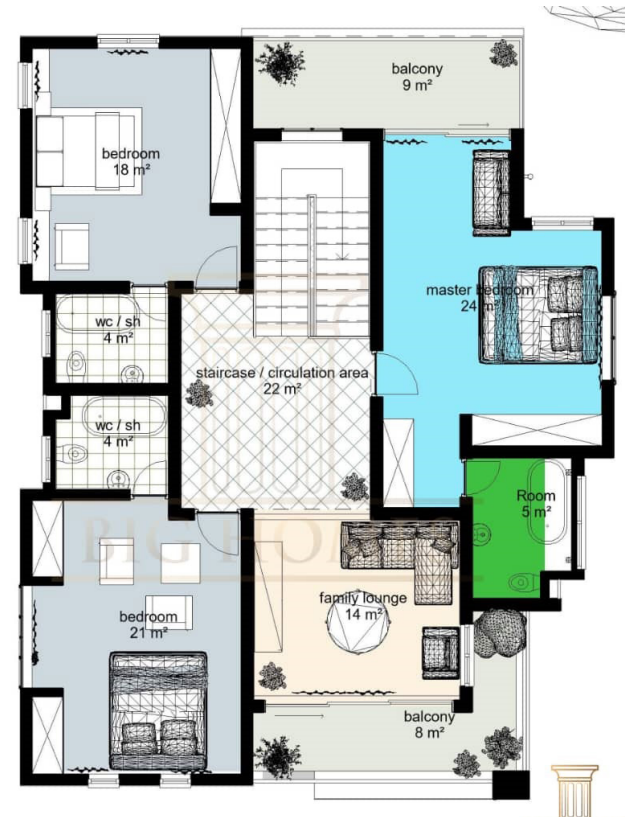
## GROUND FLOOR



### LEGEND

- LAUNDRY - 4SQM
- KITCHEN - 16SQM
- LIVING LOUNGE - 46SQM
- BEDROOM 1 - 12SQM
- ANTE ROOM - 13SQM
- MAIN ENTRANCE - 3SQM
- TERRACE - 4SQM

## FIRST FLOOR



### LEGEND

- BALCONY - 9SQM
- BALCONY 2 - 8SQM
- FAMILY LOUNGE - 14SQM
- ROOM - 5SQM
- MASTER ROOM - 24SQM
- BEDROOM 1 - 18SQM
- BEDROOM 2 - 21SQM
- STAIRCASE - 22SQM



# BELLO'S COURT



MABUSHI







The Bello's court is one of the many projects we have at Bighomes which is conveniently located at mabushi, Abuja. It is a Terrace that consist of six units for six families, and the total land size is 2400sqm. This court has adequate uniformed security, surveillance system and also an automated entrance security door. Bello's court is located in a quiet and peaceful area. It is an affordable luxury that gives you comfort at its peak. The court is designed with six spacious rooms all en-suite, a spacious parking space that can carefully accommodate three vehicles per unit and it also comes with 24/7 power supply. It is less than 10 minutes' drive to the next filling station and next kingfem plaza. Bello's court like other Bighomes properties has a flexible payment plan that allow our clients to pay for their home in ways that is most convenient to them.



## FEATURES

- Prime location in Mabushi
- 6 unit each of 4 bedrooms
- German stamped floors
- 24 hours power supply
- Tiled road in and out of the building
- All bedrooms are en-suite
- Ample parking space
- Uniformed security team
- Flexible payment

## PRICE & PAYMENT PLAN

**N75,000,000**

Outright payment or 80% minimum deposit and balance spread within three months



Prime  
Location

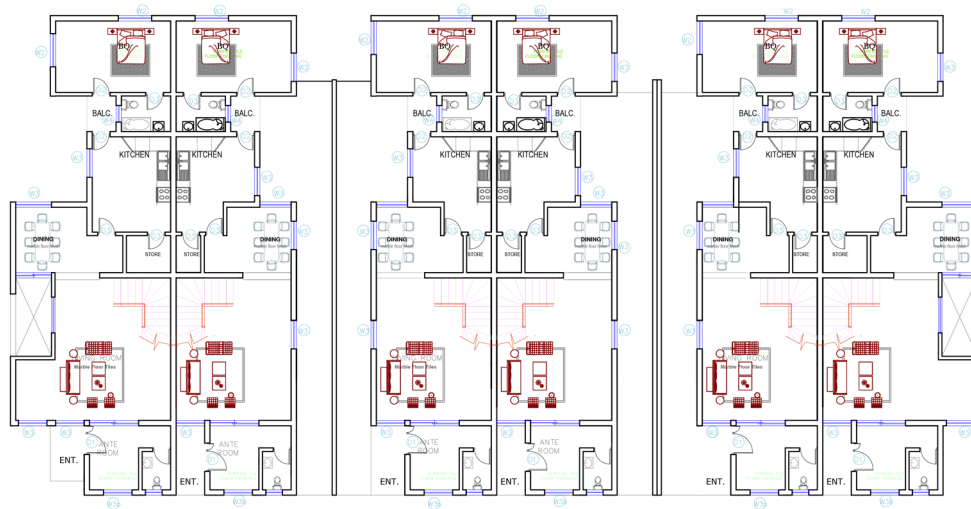


Good  
Investments

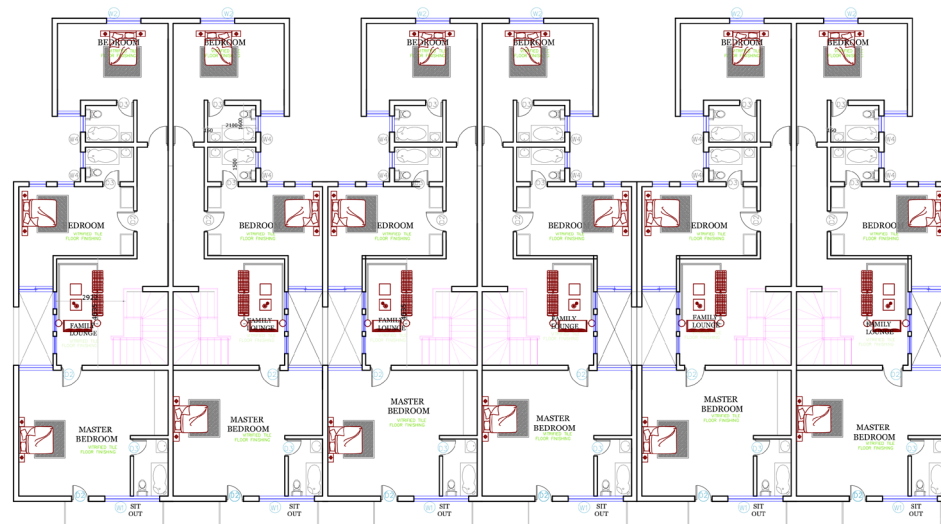


Quality  
Houses

# FLOOR PLANS



GROUND FLOOR



FIRST FLOOR



# MEJOR CASA



ASOKORO







Mejor Casa is an array of meticulously planned personal space that exudes class and magnificence. The project sits on a 2500sqm land comprising of two spacious units of four bedroom semi-detached duplexes and four units of self-contained apartments all carefully planned out on a single plot in Asokoro. This property exudes a peaceful ambiance which allows each home to reflect the owner's lifestyle. The estate is fully serviced with automated maintenance, 24/7 electricity, armed personnel, gardeners and more.



## FEATURES

- Green area
- Easily Accessible
- Spacious compound
- All rooms en-suite
- Uniformed security personnel
- Ample parking space
- Electric fence
- Tarred roads
- 24/7 power supply
- A beautiful Gazebo
- less than 5mins to the nearest mall etc

## PRICE & PAYMENT PLAN

**N280,000,000**  
**(for each unit)**

Outright payment or 60% minimum  
deposit and balance spread within  
three months



Prime  
Location



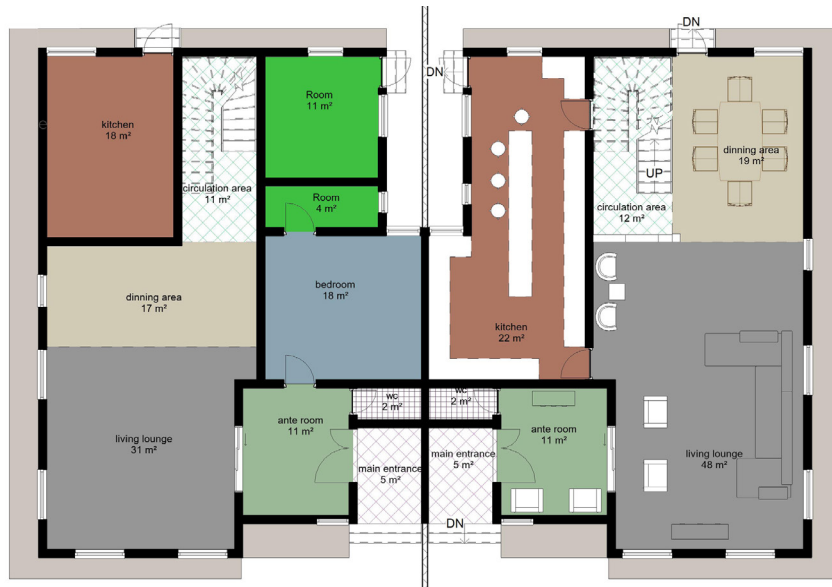
Good  
Investments



Quality  
Houses



## FLOOR PLANS



## GROUND FLOOR

## LEGEND

- Ante Room
- Living Room
- Dining Room
- Kitchen
- Main Entrance



## FIRST FLOOR

## LEGEND

- 3 Bedrooms (Left unit)
- BQ Attached (Left unit)
- Family Lounge (Left unit)
- 4 Bathroom (Right unit)
- 3 Bathrooms (Left unit)

# BLACK ROOF



JAHI





The Black Roof project is an affordable luxury mini-estate located in Jahi District, FCT, Abuja. This estate sits on a 1500sqm of land. This majestic view of Black Roof Court is a beautiful mini estate made of 5 unit terrace with 5 bedrooms in each Terrace located in a green & clean environment in Jahi.

This Court has good & accessible roads and close proximity to the nearest filling station and hospital. The Black Roof Court has an automated entrance door and comprises of 2 large living rooms, a relaxation garden for your leisure time, large packing space and it's also very secured as there is a security team on standby to ensure the safety of the surrounding with standard 24/7 power supply This property provides you the best value for your money with a flexible payment plan.



## FEATURES

Green area

- Easily Accessible
- Spacious compound
- All rooms en-suite
- Uniformed security personnel
- Ample parking space
- Tarred roads
- 24/7 power supply

## PRICE & PAYMENT PLAN

**SOLD  
OUT**



Prime  
Location



Good  
Investments

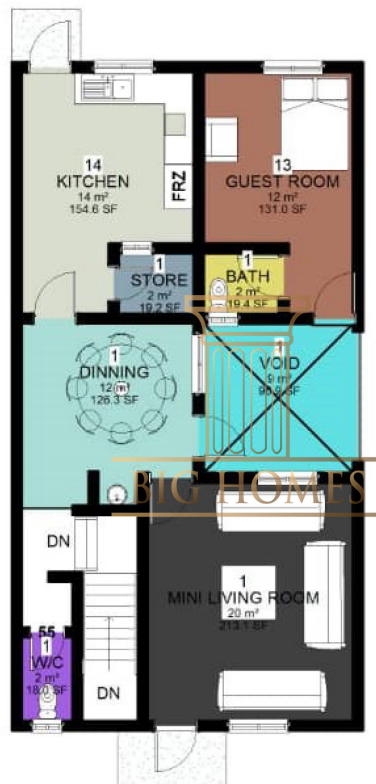


Quality  
Houses

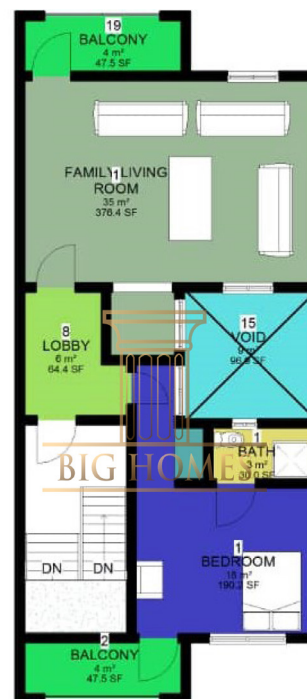


# FLOOR PLANS

GROUND FLOOR



FIRST FLOOR



SECOND FLOOR



# MAXIM'S COURT



JAHI





Nothing beats having a place of your own in a prime location in Abuja such as the Maxim's court in Jahi. These 5 units of 4-bedroom terrace is what you would call an affordable luxury. This piece of art was exclusively designed to suit a 21st century lifestyle.

The environment is best known for its tranquility and nature which gives the court natural comfort. Each unit comes with an attached BQ, all bedrooms are en-suite and equipped with modern facilities and total land size of 1,760.64sqm. This luxurious building also has ample parking space.

This property has been designed to have 24 hours of power supply, uniformed security and also automated security doors and with these you can be rest assured your safety is top notch. Maxim's court has a flexible payment plan. The Maxim's court speaks of class and perfection!



## FEATURES

- Green area
- Easily Accessible
- Spacious compound
- All rooms en-suite
- Uniformed security personnel
- Ample parking space
- Electric fence
- Tarred roads
- 24/7 power supply
- less than 5mins to the nearest mall etc

## PRICE & PAYMENT PLAN

**SOLD  
OUT**



Prime  
Location



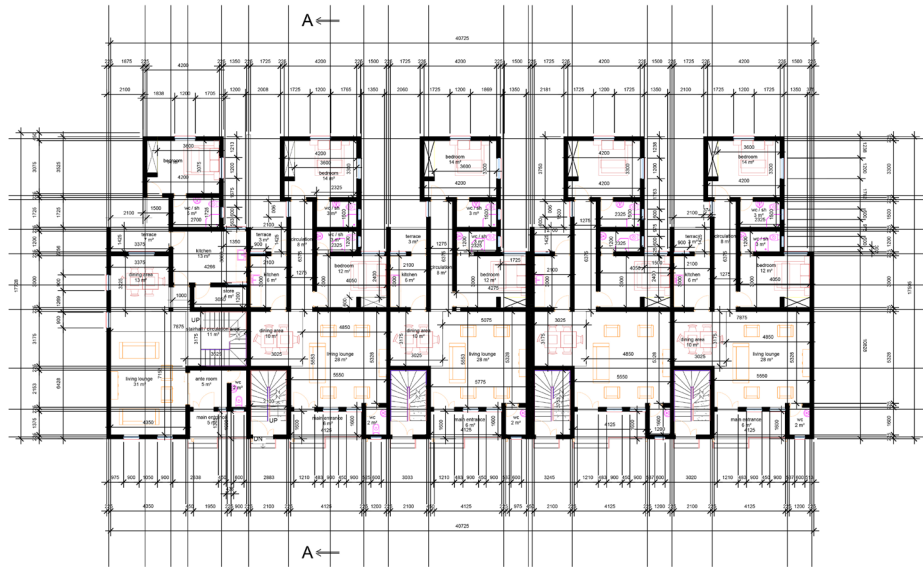
Good  
Investments



Quality  
Houses



# FLOOR PLANS



GROUND FLOOR



FIRST FLOOR

# SAPPHIRE'S COURT







What is luxury if not the ability to experience an unmatched level of quality and aesthetics to be surrounded by sophistication that can't be found elsewhere. Sapphire court do not only offer comfort but luxury that connotes superior quality seated in our luxurious smart estate. Bringing to life the smart realities you and your family deserve, it is classy, functional, and built for your exquisite lifestyle.

The estate sits on a 3,350.97sqm of land which consists of four bedroom fully detached duplex (standalone) for eight families which has been beautifully designed to comfortably suit the lifestyle of your family. The unit offers a suitable living condition for every occupant and is well equipped with an armed security team that ensures your safety at all times.

The court is an architectural beauty designed with infrastructural works and external works. Sapphire court is a perfect definition of class and it is built for your exquisite lifestyle.



## FEATURES

- Located in a prime location
- 4 bedrooms stand alone for 8 families
- 24 hours power supply
- All bedrooms are en-suite
- Uniformed security team
- Ample parking space
- Spacious compound
- Easily Accessible
- Clean water
- Surveillance Camera
- Green and relaxing area

## PRICE & PAYMENT PLAN

**Advanced Shell: N85,000,000**  
**Fully Finished: N100,000,000**

40% minimum deposit and balance  
spread within 10 to 12 months



Prime  
Location



Good  
Investments



Quality  
Houses



# FLOOR PLANS

## GROUND FLOOR



### LEGEND

- LAUNDRY - 4SQM
- KITCHEN - 16SQM
- LIVING LOUNGE - 46SQM
- BEDROOM 1 - 12SQM
- ANTE ROOM - 13SQM
- MAIN ENTRANCE - 3SQM
- TERRACE - 4SQM

## FIRST FLOOR



### LEGEND

- BALCONY - 9SQM
- BALCONY 2 - 8SQM
- FAMILY LOUNGE - 14SQM
- ROOM - 5SQM
- MASTER ROOM - 24SQM
- BEDROOM 1 - 18SQM
- BEDROOM 2 - 21SQM
- STAIRCASE - 22SQM

# MUSTARD 1 & 2 COURT



JAHI





We believe that style is a real luxury that is really desirable with unmatched value. Have you ever wondered what great ease and comfort feels like? No?

Then check out our Mustard court, designed for exclusive and prime lifestyle. Mustard court gives you and your family the comfort and relaxation you deserve.

This asset sits on a 1,398.83 and 1,410.24 sqm and it is a 4 units Terrace made up of 4 bedrooms. It is located in a functional, conducive, safe and exquisite environment. This court speaks style and luxury.



## FEATURES

- Prime location
- All rooms are en-suite
- 4 units of Terrace
- Uniformed security team
- Ample parking space
- Renewable energy
- Easily accessible
- Accessible to clean water
- Surveillance Camera
- Green and relaxing area

## PRICE & PAYMENT PLAN

**Advanced Shell: N55,000,000**  
**Fully Finished: N70,000,000**

40% minimum deposit and balance  
spread within 10 to 12 months



Prime  
Location



Good  
Investments

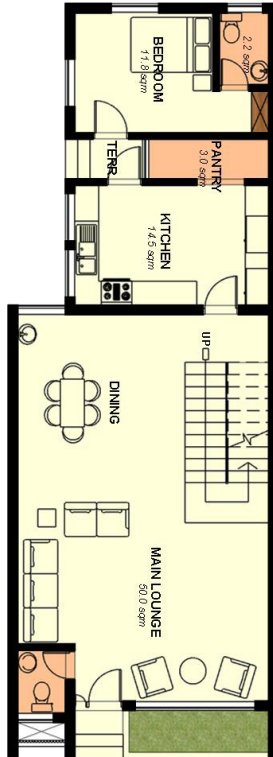


Quality  
Houses



# FLOOR PLANS

## GROUND FLOOR



### LEGEND

- MAIN LOUNGE/ DINING - 50.0 SQM
- VISITORS TOILET - 1.9 SQM
- KITCHEN - 14.5 SQM
- PANTRY - 3.0 SQM
- BEDROOM - 11.8 SQM
- BATHROOM - 2.2 SQM
- TERRACE - 1.9 SQM

## FIRST FLOOR



### LEGEND

- BALCONY - 9.5 SQM
- MASTER'S BEDROOM - 19.5 SQM
- TOILET - 4.9 SQM
- W.I.C - 5.5 SQM
- FAMILY LOUNGE - 21.6 SQM
- BEDROOM - 12.5 SQM
- TOILET - 4.2 SQM
- BEDROOM - 13.9 SQM
- TOILET - 2.9 SQM

# RICHY 1 & 2 COURT



MABUSHI





We are relentless in creating conducive environment that will contribute to our resident living their best lives while experiencing the truest happiness that a home provides. Richy's court 1 & 2 are simply designed with lasting values for years to come which has been delivered and built to inspire the urge to live differently, planned by the best minds and built by the best hands where security is fully taken into consideration.

Richy's court 1 sits on 1200sqm land comprising of 6 units Block of flats while Richy's court 2 sits on 1300sqm on land, a living area, 3 bedrooms, all bedrooms are en-suite and equipped with high quality bathrooms which has been carefully and thoroughly designed to meet with your standard and to ensure that you get the maximum value of your money.

## FEATURES

- Prime location
- Flexible payment
- Renewable Energy
- Spacious compound
- Easily Accessible
- Spacious living room
- All bedrooms are en-suite
- Ample parking space
- Uniformed security
- Green and relaxing area

## PRICE & PAYMENT PLAN

**Advanced Shell: N35,000,000**  
**Fully Finished: N50,000,000**

40% minimum deposit and balance  
spread within 10 to 12 months



Prime  
Location



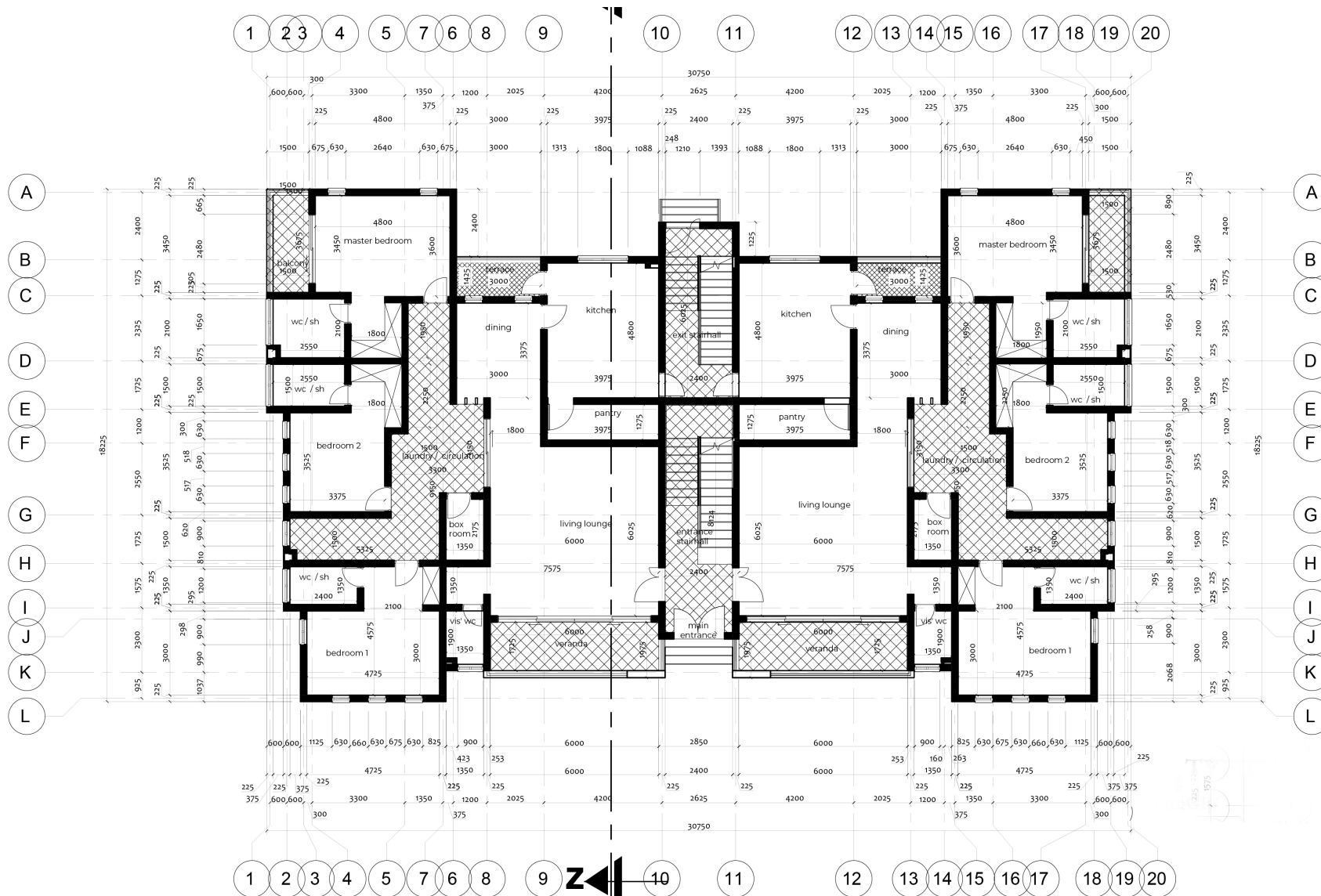
Good  
Investments



Quality  
Houses



# FLOOR PLANS





[www.bighomesnigeria.com](http://www.bighomesnigeria.com)  
Email: [lg@thebighomes.com](mailto:lg@thebighomes.com)  
Lily: 0809 104 4441