

BROCHURE

PROJECTS

2 0 2 2



About Big Homes

Big Homes is one of the fastest growing real estate firms in Abuja, Nigeria. It has been three years since its inception but in that period, the firm has been able to establish itself with certain core values; customer satisfaction, integrity, innovation, flexibility, honesty, and quality.

Big Homes entry into the Abuja real estate scene aims to provide potential clients with innovative and contemporary living spaces as well as to impact the real estate scene positively.

The Big Homes brand continues to evolve and seek better ways to serve our customers and contribute our quota to the real estate scene in Nigeria.

Our Existing projects

- Maxim's Court
- Muna's Court
- Bello's Court
- Pearl's Court
- Mustard 1&2 Court
- Meyor Casa
- Gidel's Court
- Gibson's Court
- Black Roof
- Sapphire Court
- Aurora's Court
- Christy's Court
- Ivy's Court
- Z project
- Richy's Court

Table of content

Muna's Court	_____	1
Gibson's Court	_____	5
Gidel's Court	_____	9
Pearl's Court	_____	13
Bello's Court	_____	17
Meyor Casa	_____	21
Black Roof	_____	25
Maxim's Court	_____	29
Sapphire Court	_____	33
Mustard 1&2	_____	37
Richy 1&2 Court	_____	41



FEATURES

- Prime location in Mabushi
- 6 unit of 3 bedroom and an attached BQ
- German stamped floors
- 24 hours power supply
- Tiled road in and out of the building
- All bedrooms are en-suite
- Ample parking space
- Uniformed security team



MUNA'S COURT

Mabushi

Nothing beats an affordable, beautiful and luxurious terrace located in Mabushi, a serene and prime area in Abuja. Muna's court consists of six units with three bedrooms and a boys' quarter attached to each unit. It has been beautifully designed to comfortably suit six families with an ample parking space which can accommodate three cars per unit.

The unit offers a suitable living condition for every occupant and is well equipped with an armed security team. In a bid to give our clients the feel of modernization, each unit has an automated door at the main entrance and all bedrooms are fully en-suite. Over the years, Big Homes has been committed to ensuring green, healthy and luxurious living and this have been the trademark of our projects. Hence, Muna's court was thoroughly designed with meticulous attention to the comfort and satisfaction of our clients regardless of their social class.





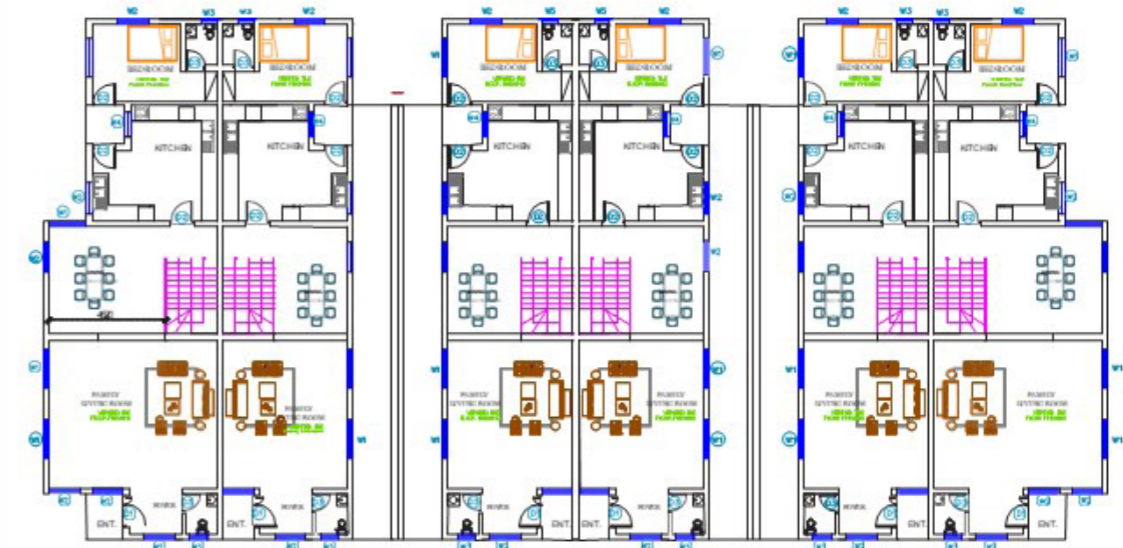
PAYMENT PLAN

SOLD OUT



FLOOR PLANS

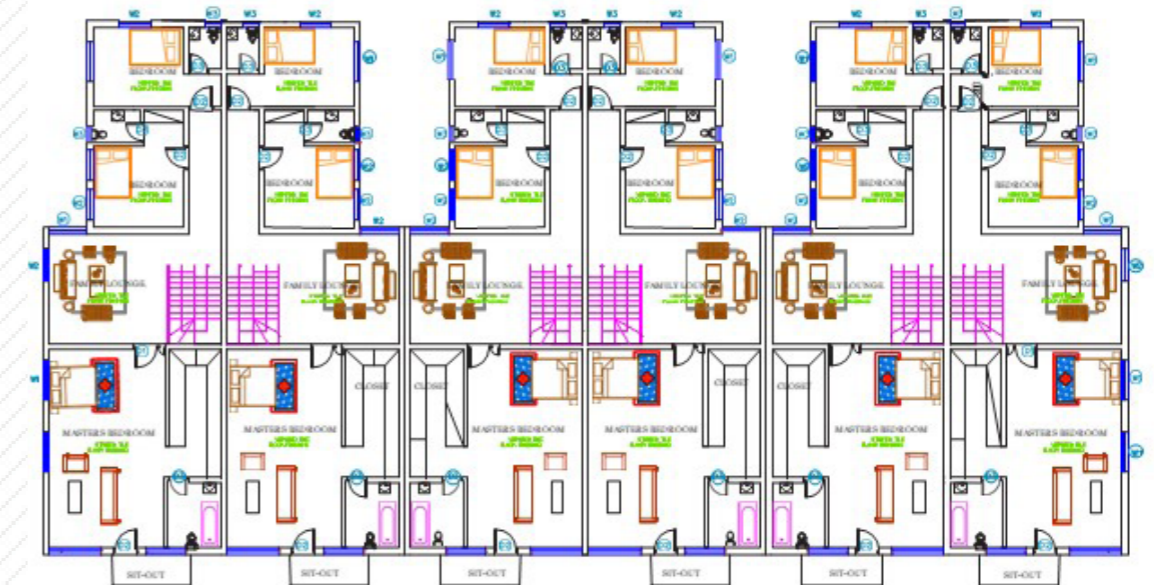
GROUND FLOOR



LEGEND

- LIVING LOUNGE / DINING - 57SQM
- KITCHEN - 21SQM
- B/Q BEDROOM - 12SQM

FIRST FLOOR



LEGEND

- FAMILY LOUNGE - 20SQM
- BEDROOM 2 - 14SQM
- WC / SH - 3SQM
- BEDROOM 3 - 13SQM
- WC / SH - 3SQM
- MASTER BEDROOM - 43SQM
- STAIR HALL / CIRCULATION AREA - 12SQM
- BALCONY - 6SQM



FEATURES

- Prime location in Mabushi
- 4 bedroom stand alone and an attached BQ for 20 families
- Mixed used estate for both commercial and residential purpose
- A mall inside the estate
- All bedrooms are en-suite
- Enormous parking space
- Automated security door
- 24hrs power supply
- Uniformed security team



GIBSON'S COURT

Mabushi

You would love this delightful, luxurious and captivating detached duplex located in a prime location and a serene environment in Mabushi. Gibson's court is a beautiful mini estate with total land size of 9,937.55 sqm built for 20 families with each standalone made up of 4 bedrooms and an attached BQ, a playground which is 1,610.26sqm and also a very spacious parking space.

Talking about the natural and elegant environment for your convenience. Imagine drifting off to sleep to the subtle sound of nature and awakening to a spectacular sunrise. Gibson's court is the true definition of Beauty and Elegance that gives you the lifestyle you deserve.





PAYMENT PLAN

Advanced Shell: N120,000,000

Fully Finished: N150,000,000

50% down payment and spread balance between twelve months



Prime Location



Good Investments



Quality Houses

FLOOR PLANS

GROUND FLOOR



LEGEND

- FAMILY LOUNGE - 20SQM
- BEDROOM 2 - 14SQM
- WC / SH - 3SQM
- BEDROOM 3 -13SQM
- WC / SH - 3SQM
- MASTER BEDROOM - 43SQM
- STAIR HALL / CIRCULATION AREA-12SQM
- BALCONY - 6SQM

LEGEND

- MASTER BEDROOMS - 44SQM
- WC / SH - 7 SQM
- CLOSET -

SECOND FLOOR



LEGEND

- BALCONY - 11SQM
- FAMILY LOUNGE - 34SQM
- BEDROOM 1 - 29SQM
- BEDROOM 2 - 28SQM
- BEDROOM 3 - 25SQM

FIRST FLOOR





FEATURES

- Prime location in life camp
- 6 unit of 3 bedroom and an attached BQ
- German stamped floors
- 24 hours power supply
- Tiled road in and out of the building
- All bedrooms are en-suite
- Ample parking space
- Uniformed security team

GIDEL'S COURT LIFE CAMP

The Gidel's court is a well-designed Terrace located in Life Camp a prime area in Abuja. The Gidel's home gives exclusive comfort and satisfaction. It consists of six units with three bedrooms and a BQ attached to each unit. It has been beautifully designed to comfortably suit six families with an ample parking space which can accommodate two cars per unit.

Also, the court sits on a 17600sqm of land. Each unit offers a suitable living condition for every occupant and is well equipped. The building gives our client a feel of modernization. We also provide automated security doors, armed security team and 24 hours power supply.

The Gidel's court has been carefully and thoroughly designed to meet up with the standards of our client and to ensure each client gets the value of their money. Over the years we at Big Homes have been committed to ensuring green, healthy and luxurious living and this has been the trademark of our projects.



FLOOR PLANS

GROUND FLOOR

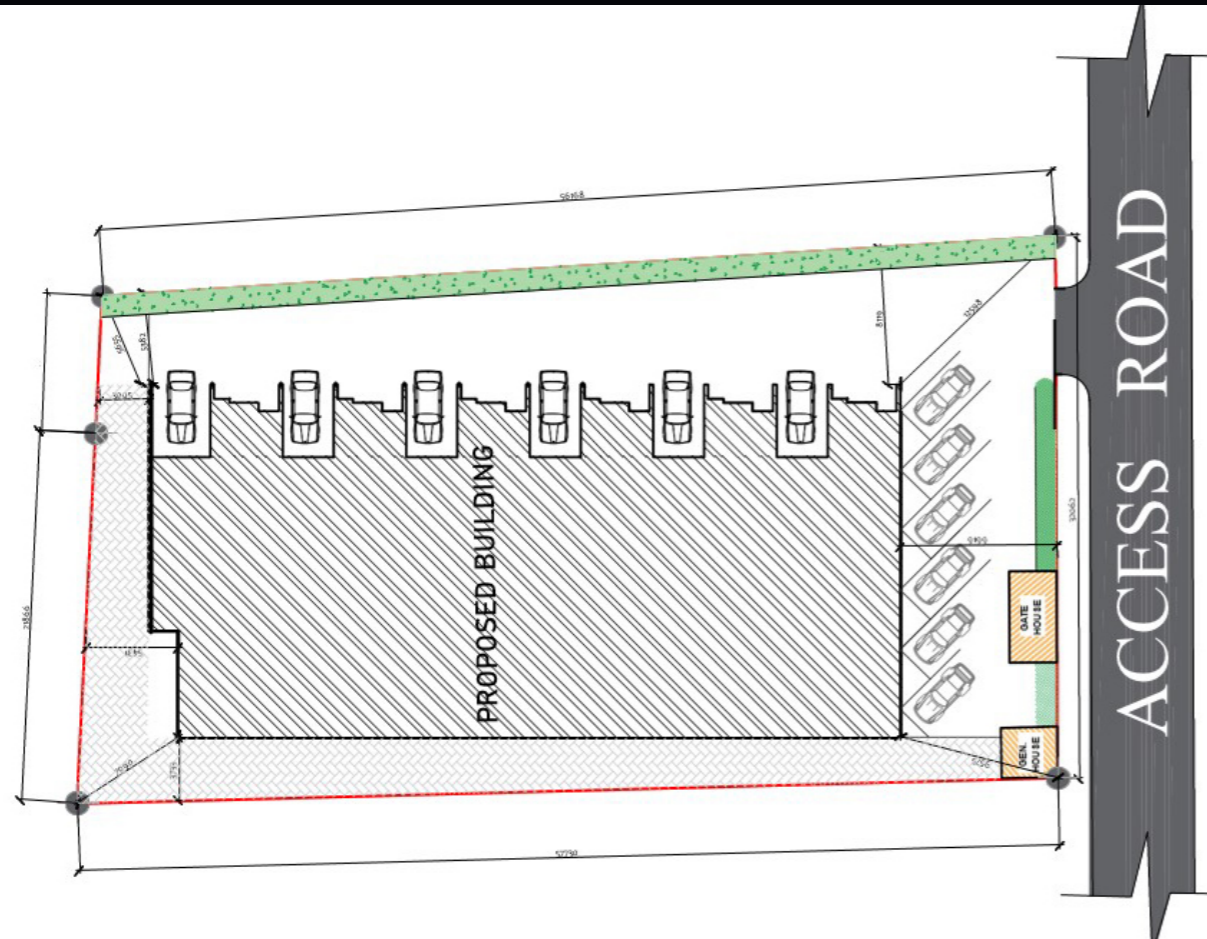


- LEGEND**
- LIVING AREA- 48SQM
 - KITCHEN - 18SQM
 - B/Q BEDROOM - 16SQM
 - WC / SH - 7SQM

FIRST FLOOR



- LEGEND**
- MASTERS BEDROOM - 48SQM
 - FAMILY LOUNGE - 24SQM
 - BEDROOM 1 - 17SQM
 - BEDROOM 2 - 19SQM



BIGHOMES

PAYMENT PLAN

N39,000,000

50% Outright payment or 50% minimum deposit and balance spread within twelve months





FEATURES

- Green area
- Easily Accessible
- Spacious compound
- All rooms en-suite
- Uniformed security personnel
- Ample parking space
- Electric fence
- Tarred roads
- 24/7 power supply
- less than 5mins to the nearest mall ETC



PEARL'S COURT KATAMPE

This magnificent, captivating & luxurious mini estate of four bedroom fully detached duplex (stand alone) for 7 families is a fantastic masterpiece that is located in a beautiful serene, clean and well developed environment at Katampe Extension with a total land size 3,200sqm.

It provides you with natural atmosphere for your calm & quite time for meditation & relaxation. This court has been designed with automated entrance door, electric fence, constant water supply, accessible roads. This court is also very secured as there is a standby uniformed security team on site.

Pearl's court is a perfect definition of TOP-NOTCH & UNIQUENESS which is an affordable luxury with a flexible payment plan, Big Homes provides you with fantastic properties that gives you the standard of the Luxury lifestyle you desire.

So when you Think Luxury, Think PEARL'S COURT!





FLOOR PLANS

GROUND FLOOR



Legend

- LAUNDRY - 4SQM
- KITCHEN - 16SQM
- LIVING LOUNGE - 46SQM
- BEDROOM 1 - 12SQM
- ANTE ROOM - 13SQM
- MAIN ENTRANCE - 3SQM
- TERRACE - 4SQM

FIRST FLOOR



Legend

- BALCONY - 9SQM
- BALCONY 2 - 8SQM
- FAMILY LOUNGE - 14SQM
- ROOM - 5SQM
- MASTER ROOM - 24SQM
- BEDROOM 1 - 18SQM
- BEDROOM 2 - 21SQM
- STAIRCASE - 22SQM

PAYMENT PLAN

Advanced Shell: N85,000,000

Fully Finished: N100,000,000

Outright payment or 50% minimum deposit and balance spread within twelve months





FEATURES

- Prime location in Mabushi
- 6 unit of 3 bedroom and an attached BQ
- German stamped floors
- 24 hours power supply
- Tiled road in and out of the building
- All bedrooms are en-suite
- Ample parking space
- Uniformed security team
- Flexible payment



BELLO'S COURT MABUSHI

The Bello's court is one of the many projects we have at Bighomes which is conveniently located at mabushi, Abuja. It is a Terrace that consist of six units and an attached BQ for six families in the building and the total land size is 2400sqm. This court has adequate uniformed security, surveillance system and also an automated entrance security door.

Bello's court is located in a quiet and peaceful area. It is an affordable luxury that gives you comfort at its peak. The court is designed with six spacious rooms all en-suite, a spacious parking space that can carefully accommodate three vehicles per unit and it also comes with 24/7 power supply. It is less than 10 minutes' drive to the next filling station and next kingfem plaza.

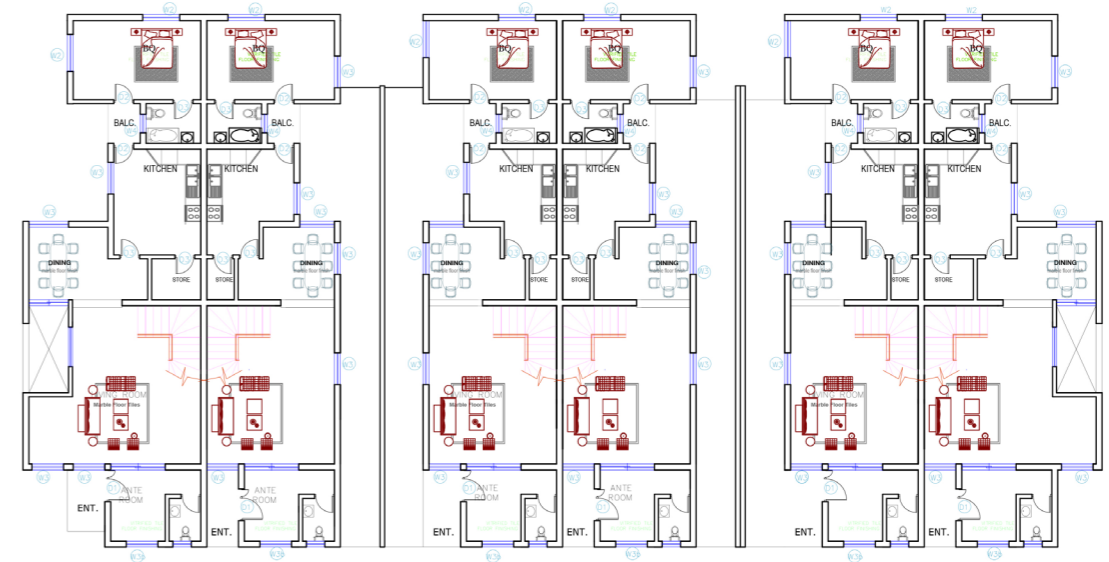
Bello's court like other Bighomes properties has a flexible payment plan that allow our clients to pay for their home in ways that is most convenient to them.



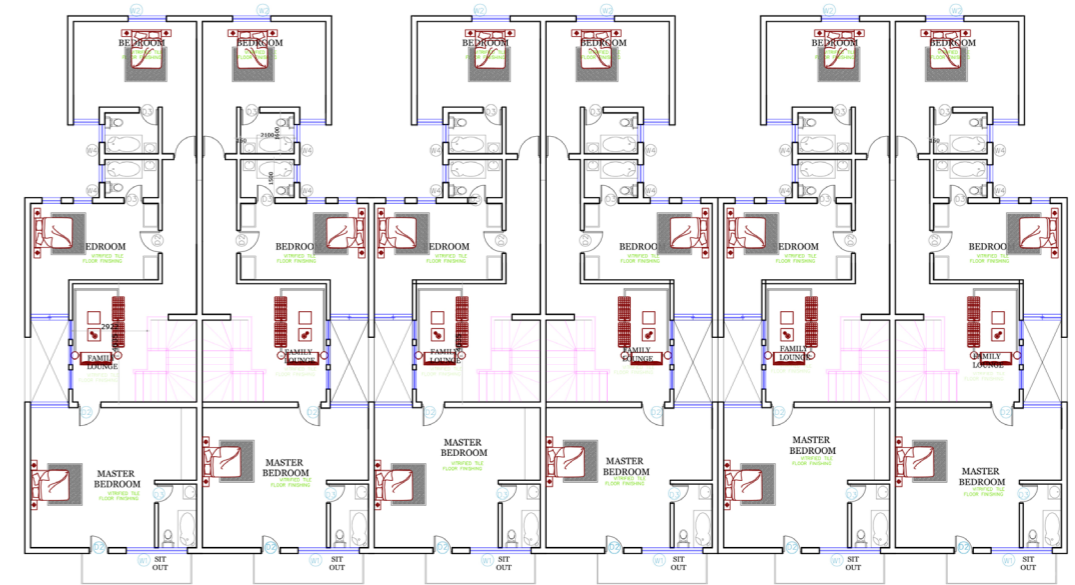


FLOOR PLANS

GROUND FLOOR



FIRST FLOOR



PAYMENT PLAN

N75,000,000

80%
Outright payment or 80%
minimum deposit and balance
spread within three months



Prime Location



Good Investments



Quality Houses



FEATURES

- Green area
- Easily Accessible
- Spacious compound
- All rooms en-suite
- Uniformed security personnel
- Ample parking space
- Electric fence
- Tarred roads
- 24/7 power supply
- less than 5mins to the nearest mall ETC



MEJOR CASA ASOKORO

Mejor Casa is an array of meticulously planned personal space that exudes class and magnificence. The project sits on a 2500sqm land comprising of two spacious units of four bedroom semi-detached duplexes and four units of self-contained apartments all carefully planned out on a single plot in Asokoro.

This property exudes a peaceful ambiance which allows each home to reflect the owner's lifestyle. The estate is fully serviced with automated maintenance, 24/7 electricity, armed personnel & gardeners.





PAYMENT PLAN

N280,000,000
(for each unit)

Outright payment or 60%
minimum deposit and balance
spread within three months



Prime
Location



Good
Investments



Quality
Houses

FLOOR PLANS

GROUND FLOOR



- Ante Room
- Living Room
- Dining Room
- Kitchen
- Main Entrance

FIRST FLOOR



- 3 Bedrooms (Left unit)
- BQ Attached (Left unit)
- Family Lounge (Left unit)
- 4 Bathroom (Right unit)
- 3 Bathrooms (Left unit)



FEATURES

- Green area
- Easily Accessible
- Spacious compound
- All rooms en-suite
- Uniformed security personnel
- Ample parking space
- Tarred roads
- 24/7 power supply



BLACK ROOF JAHI

The Black Roof project is an affordable luxury mini-estate located on Plot 903, Jahi District, FCT, Abuja. This estate sits on a 1500sqm of land. This majestic view of Black Roof Court is a beautiful mini estate made of 5 unit terrace with 4bedroom and an attached BQ in each Terrace located in a green & clean environment in Jahi.

This Court has good & accessible roads and close proximity to the nearest filling station and hospital. The Black Roof Court has an automated entrance door and comprises of 2 large living rooms, a relaxation garden for your leisure time, large packing space and it's also very secured as there is a security team on standby to ensure the safety of the surrounding with standard 24/7 power supply This property provides you the best value for your money with a flexible payment plan.





PAYMENT PLAN

N75,000,000

80%
Outright payment or 80% minimum deposit and balance spread within three months



Prime Location



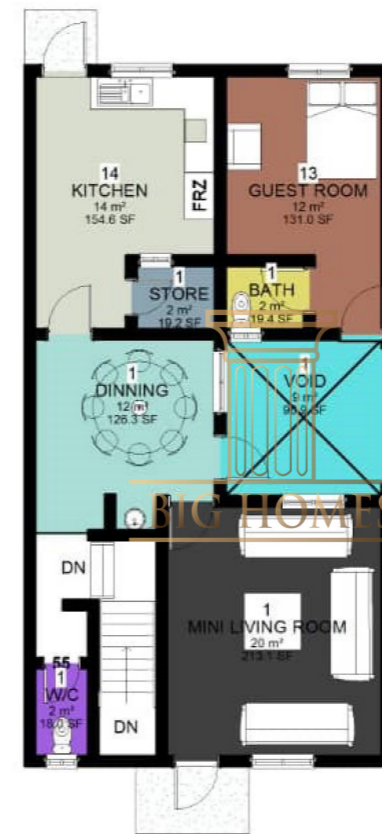
Good Investments



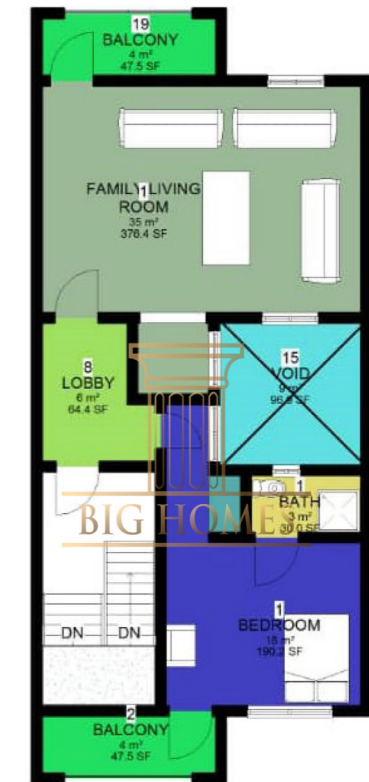
Quality Houses

FLOOR PLANS

GROUND FLOOR



FIRST FLOOR



SECOND FLOOR





FEATURES

- Green area
- Easily Accessible
- Spacious compound
- All rooms en-suite
- Uniformed security personnel
- Ample parking space
- Electric fence
- Tarred roads
- 24/7 power supply
- less than 5mins to the nearest mall ETC



MAXIM'S COURT JAH

Nothing beats having a place of your own in a prime location in Abuja such as the Maxim's court in Jahi. These 5 units of 4-bedroom terrace is what you would call an affordable luxury. This piece of art was exclusively designed to suit a 21st century lifestyle.

The environment is best known for its tranquility and nature which gives the court natural comfort. Each unit comes with an attached BQ, all bedrooms are en-suite and equipped with modern facilities and total land size of 1,760.64sqm. This luxurious building also has ample parking space.

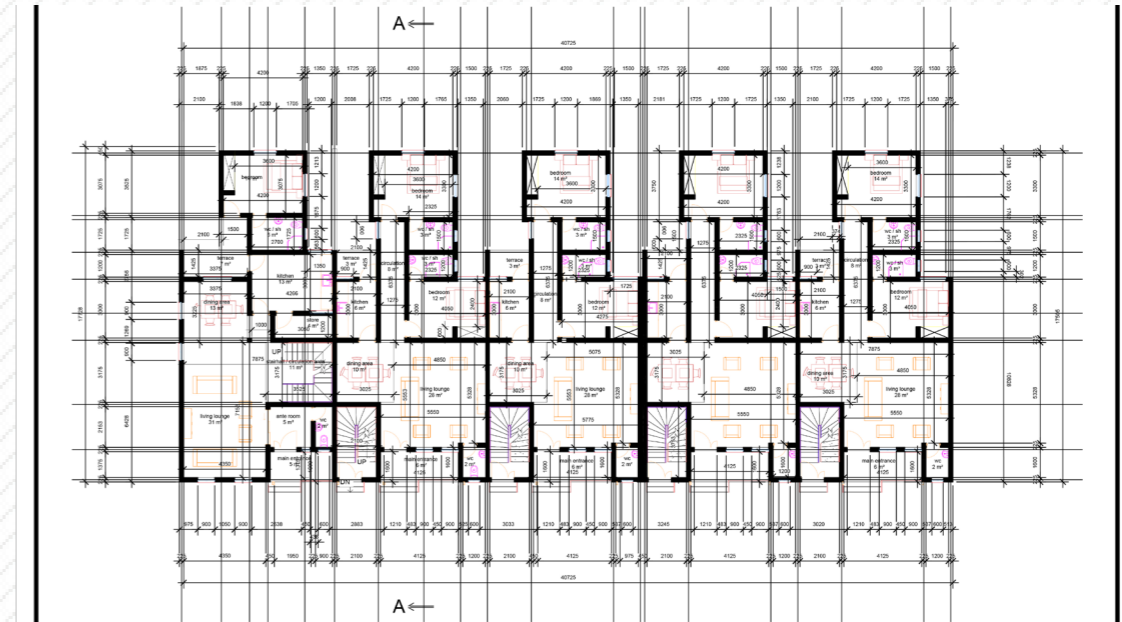
This property has been designed to have 24 hours of power supply, uniformed security and also automated security doors and with these you can be rest assured your safety is top notch. Maxim's court has a flexible payment plan. The Maxim's court speaks of class and perfection!





FLOOR PLANS

GROUND FLOOR



FIRST FLOOR



**SOLD
OUT**



Prime Location



Good Investments



Quality Houses



FEATURES

- Located in a prime location
- 4 bedroom stand alone for 8 families
- 24 hours power supply
- All bedrooms are en-suite
- Uniformed security team
- Ample parking space
- Spacious compound
- Easily Accessible
- Clean water
- Surveillance Camera
- Green and relaxing area

SAPPHIRE'S COURT MABUSHI

What is luxury if not the ability to experience an unmatched level of quality and aesthetics to be surrounded by sophistication that can't be found elsewhere. Sapphire court do not only offer comfort but luxury that connotes superior quality seated in our luxurious smart estate. Bringing to life the smart realities you and your family deserve, it is classy, functional, and built for your exquisite lifestyle.

The estate sits on a 3,350.97sqm of land which consists of four bedroom fully detached duplex (standalone) for eight families which has been beautifully designed to comfortably suit the lifestyle of your family. The unit offers a suitable living condition for every occupant and is well equipped with an armed security team that ensures your safety at all times.

The court is an architectural beauty designed with infrastructural works and external works. Sapphire court is a perfect definition of class and it is built for your exquisite lifestyle.





PAYMENT PLAN

Advanced Shell: N85,000,000

Fully Finished: N100,000,000

40% minimum deposit and
balance spread within 10 to 12
months



FLOOR PLANS

GROUND FLOOR



Legend

- LAUNDRY - 4SQM
- KITCHEN - 16SQM
- LIVING LOUNGE - 46SQM
- BEDROOM 1 - 12SQM
- ANTE ROOM - 13SQM
- MAIN ENTRANCE - 3SQM
- TERRACE - 4SQM

FIRST FLOOR



Legend

- BALCONY - 9SQM
- BALCONY 2 - 8SQM
- FAMILY LOUNGE - 14SQM
- ROOM - 5SQM
- MASTER ROOM - 24SQM
- BEDROOM 1 - 18SQM
- BEDROOM 2 - 21SQM
- STAIRCASE - 22SQM



FEATURES

- Prime location
- All rooms are en-suite
- 4 units of Terrace
- Uniformed security team
- Ample parking space
- Renewable energy
- Easily accessible
- Accessible to clean water
- Surveillance Camera
- Green and relaxing area



MUSTARD 1&2 COURT JAHI

We believe that style is a real luxury that is really desirable with unmatched value. Have you ever wondered what great ease and comfort feels like? No?

Then check out our Mustard court, designed for exclusive and prime lifestyle. Mustard court gives you and your family the comfort and relaxation you deserve.

This asset sits on a 1,398.83 and 1,410.24 sqm and it is a 4 units Terrace made up of 3 bedroom and an attached BQ. It's located in a functional, conducive, safe and exquisite environment. This court speaks class and luxury.





PAYMENT PLAN

Advanced Shell: N55,000,000

Fully Finished: N70,000,000

40% minimum deposit and
balance spread within 10 to 12
months



Prime
Location



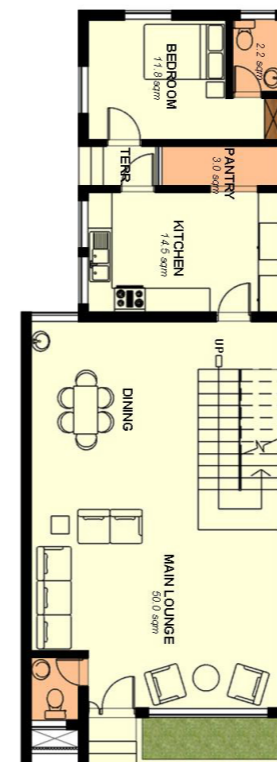
Good
Investments



Quality
Houses

FLOOR PLANS

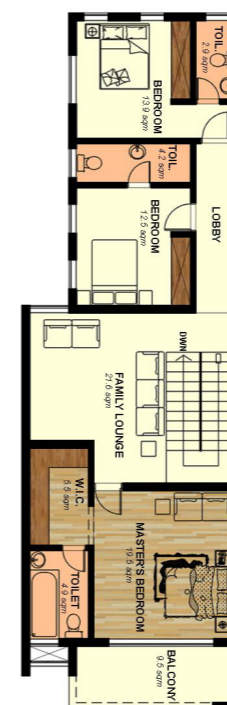
GROUND FLOOR



Legend

- MAIN LOUNGE/ DINING - 50.0 SQM
- VISITORS TOILET - 1.9 SQM
- KITCHEN - 14.5 SQM
- PANTRY - 3.0 SQM
- BEDROOM - 11.8 SQM
- BATHROOM - 2.2 SQM
- TERRACE - 1.9 SQM

FIRST FLOOR



Legend

- BALCONY - 9.5 SQM
- MASTER'S BEDROOM - 19.5 SQM
- TOILET - 4.9 SQM
- W.I.C - 5.5 SQM
- FAMILY LOUNGE - 21.6 SQM
- BEDROOM - 12.5 SQM
- TOILET - 4.2 SQM
- BEDROOM - 13.9 SQM
- TOILET - 2.9 SQM



FEATURES

- Prime location
- Flexible payment
- Renewable Energy
- Spacious compound
- Easily Accessible
- Spacious living room
- All bedrooms are en-suite
- Ample parking space
- Uniformed security
- Green and relaxing area

RICHY 1&2 COURT JAH

We are relentless in creating conducive environment that will contribute to our resident living their best lives whilst experiencing the truest happiness that a home provides. Richy's court 1 & 2 are simply designed with lasting value for years to come which has been delivered and built to inspire the urge to live differently and are smart dream homes, planned by the best minds and built by the best hands where security is fully taken into consideration.

Richy's court 1 sits on 1200sqm land comprising of 6 units Block of flats and Richy's court 2 sits on 1300sqm on land, a living area, 3 bedroom block of flat, all bedrooms are en-suite and equipped with high quality bathrooms which has been carefully and thoroughly designed to meet with your standard and to ensure that you get the maximum value of your money.



PAYMENT PLAN

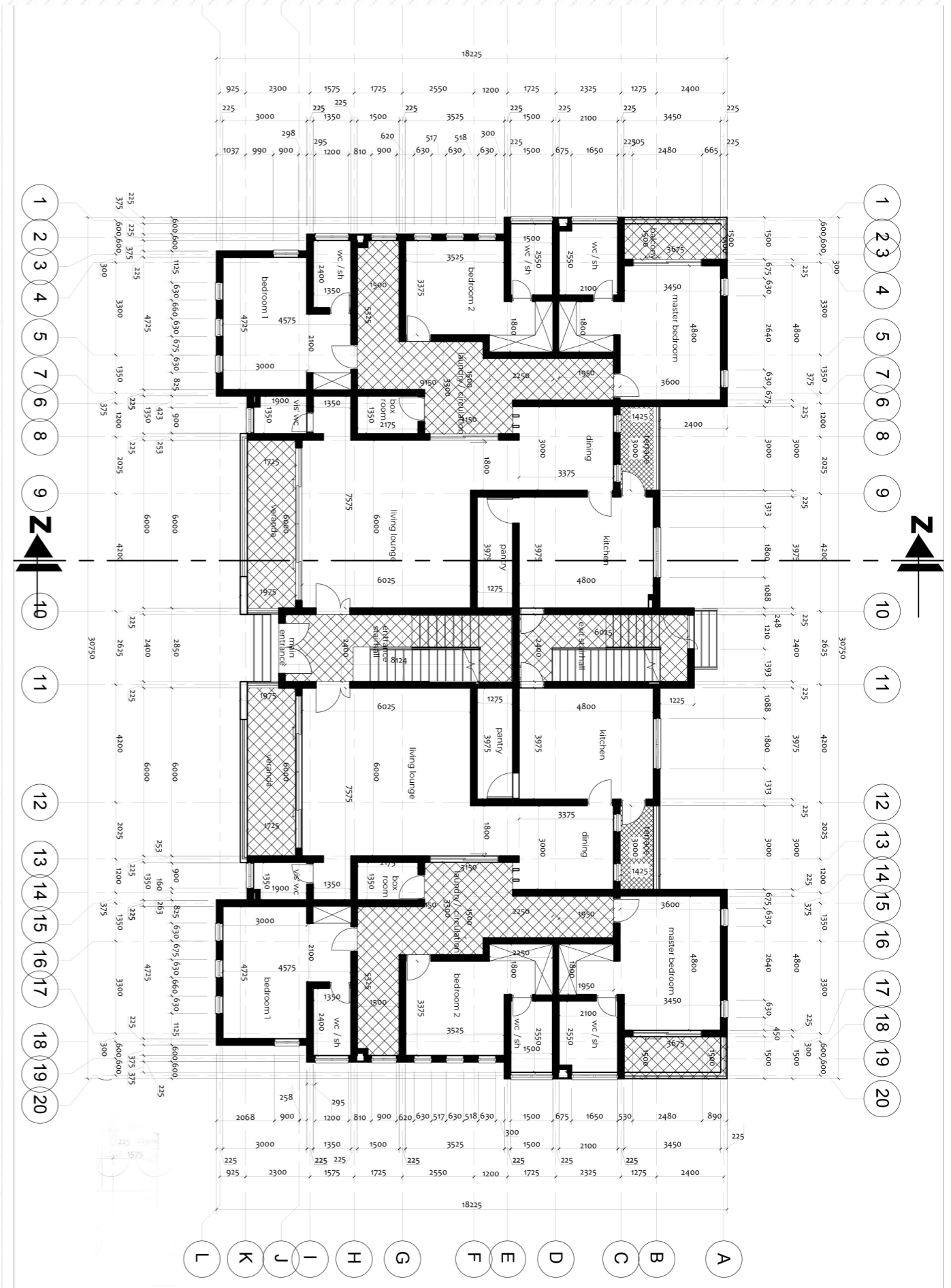
PAYMENT PLAN

Advanced Shell: N35,000,000
Fully Finished: N50,000,000

40% minimum deposit and
 balance spread within 10 to 12
 months



FLOOR PLAN





www.bighomesnigeria.com
Email: lg@thebighomes.com
Wendy: 08188880025