



COMPANY PROFILE



2022



HELLO!
WE ARE
BIGHOMES AND
WE'RE HERE
TO MAKE YOUR
DREAMS COME
TRUE.

BIG HOMES IS ONE OF THE FASTEST GROWING REAL ESTATE FIRMS IN ABUJA, NIGERIA. IT HAS BEEN THREE YEARS SINCE ITS INCEPTION BUT IN THAT PERIOD, THE FIRM HAS BEEN ABLE TO ESTABLISH ITSELF WITH CERTAIN CORE VALUES; CUSTOMER SATISFACTION, INTEGRITY, INNOVATION, FLEXIBILITY, HONESTY, AND QUALITY.

BIG HOMES ENTRY INTO THE ABUJA REAL ESTATE SCENE AIMS TO PROVIDE POTENTIAL CLIENTS WITH INNOVATIVE

AND CONTEMPORARY LIVING SPACES AS WELL AS TO IMPACT THE REAL ESTATE SCENE POSITIVELY. THE BIGHOMES BRAND CONTINUES TO EVOLVE AND SEEK BETTER WAYS TO SERVE OUR CUSTOMERS AND CONTRIBUTE OUR QUOTA TO THE REAL ESTATE SCENE IN NIGERIA.

TABLE OF CONTENT

Cover Page	
Introduction	
Table Of Contents	
Greetings from The Founder	

01 ABOUT US

Big Homes Values	5
Mission, Vision & Perspective	6
The Big Picture	7

02 THE CREW

The Big Team	11
Management	13
Human Resources (H.R)	17
Facility Manager	18
Customer Relationship Manager	19
Accounting Department	20
Sales Department	21
Inventory Department	22
Legal Department	23
Lead Generation Department	24
Quantity Surveyors Department	25
Media Department	26

03 OUR PROJECTS

Black Roof	29
Christy's Court	31
Bello's Court	33
Z Project	35
Mejor Casa	37
Gidel's Court	39
Ivy's Court	41
Gibson's Court	43
Aurora's Court	45
Maxim's Court	47
Muna's Court	49
Pearl's Court	51

OUR FOUNDER

Running a successful company takes a visionary, it takes a leader who has seen a challenge and is not scared to take on that challenge and run with it. Ultimately, it takes someone with an unwavering commitment to see that vision through.

Growing companies keep their past in mind and aspire to achieve a fantastic milestone in their future.

We at Bighomes work on the same principles of ethics that were the root of our establishment. Since our organization, we have been committed to building affordable luxury mini estates, and till date, we still abide by these core values.

Our relationships with our clients speak volumes of our high standards. At Big Homes Ltd we adhere to our core disciplines in delivering effective service to our clients.

Big Homes has a great deal in its workforce. Our members of staff are the backbone and pride of our establishment. Working together in a very productive environment we have completed many projects including black roof, the recent project that was commissioned on the 24th of April, 2021.

Our confidence in putting the trust in our staff and faith in our esteemed clients has proven to be the hallmark of our success stories.

The mutual valuable relationship built with our clients has ensured the delivery of our services and that is building affordable luxury mini estate, giving them the comfort and feel of a home and also bringing them close to nature.

On Behalf of Big Homes, we will love to show our gratitude to our clients for continually putting their trust in our expertise.

We pledge to always serve you and surpass our target in providing quality and affordable luxurious Homes.



TOPSY EMMANUEL ESSIEN
BIG HOMES FOUNDER



ABOUT US

BIG HOMES VALUES

A company without value is a company without identity, its value that keeps us grounded and focused. It is why at Big Homes, we take our values seriously and why we make sure to stay true to them in our day to day activities.



BigHomes Ltd is one of the fastest-growing real estate companies in Abuja, Nigeria. The BigHomes brand is poised to reinvent the real estate market through its affordable, luxury mini estates.

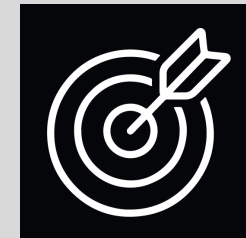
BigHomes is focused on priorities; affordability, exclusivity, luxury, flexibility, and quick delivery. These priorities help us achieve our vision of attaining sustainable growth, value creation, and customer satisfaction.

Our core focus is customer satisfaction, in attaining this, all Bighomes projects are embedded with the following values; timely delivery, flexibility plan, and requisite infrastructure



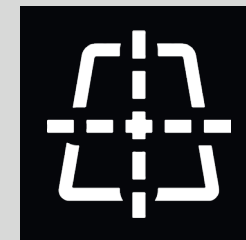
VISION

To provide the most affordable luxury homes in the most exclusive districts within the Federal Capital Territory - Abuja.



MISSION

Our Mission is to open the gates to exclusive and luxury living, thereby making it possible for the middle class and a portion of the lower class to live the lifestyle of the rich.



PERSPECTIVE

We seek to run a successful company where our partners, clients, team and community wins. Our life and business is designed around the philosophy of giving back to the community.

Visible Innovative Process

The BIG team understands the importance of transparency and this is why we maintain visible processes.

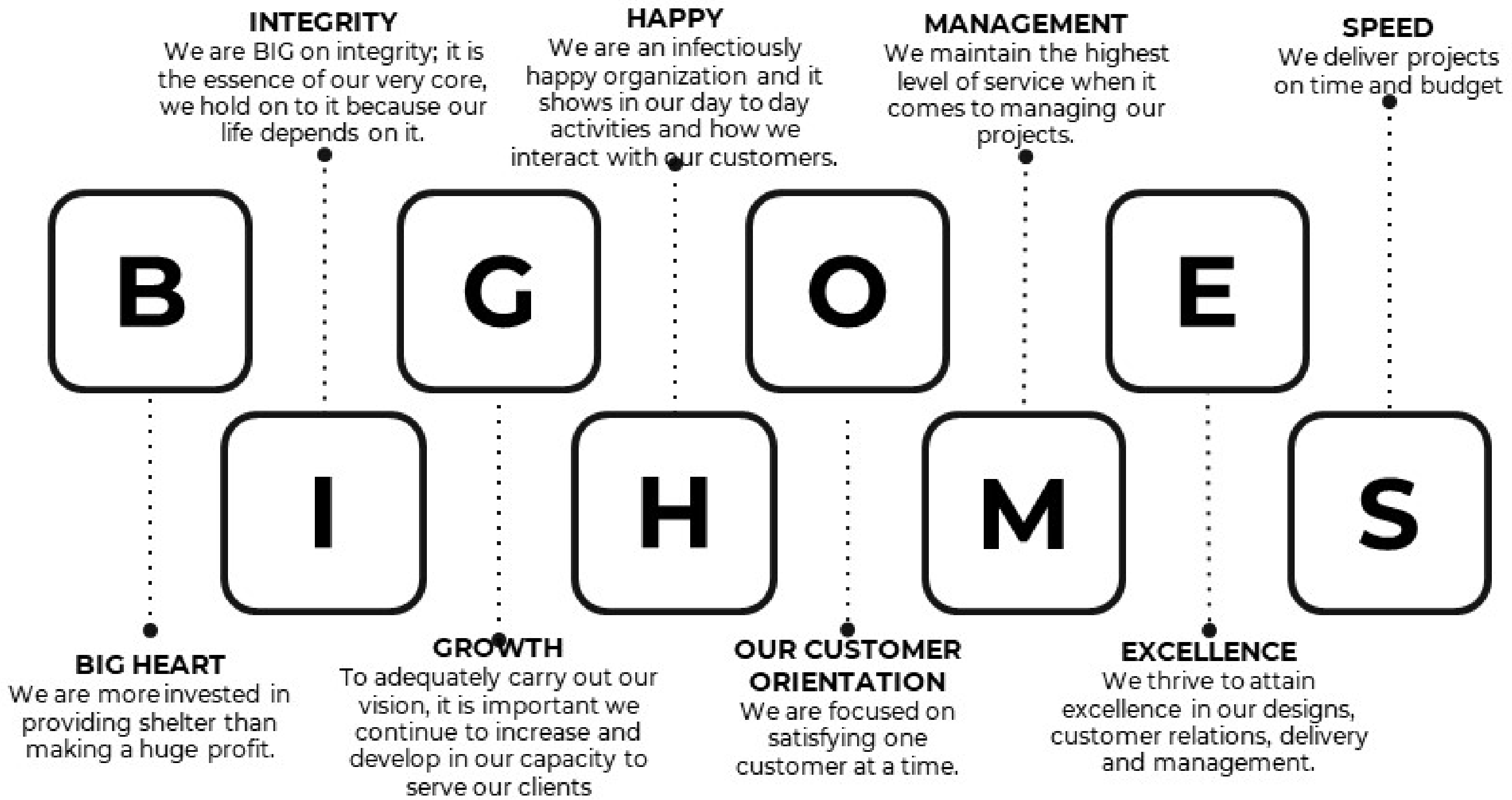
Best Deal There Is

We have some of the best prices in the market. You will definitely get the most value of your money with us.

Communication Matters

We understand the importance of communication, which is why we maintain a strong line of Communication.

THE BIG PICTURE





THE CREW



Producing work that is noteworthy requires the collective efforts of different team members who have no issues with pouring out their best to achieve amazing projects.

How we keep the **bond strong**,
is probably the answer to why
we are **so good at what we do**.

The BIG team is comprised of several professionals who are exceptional at what they do. These teams are the ones who make all the magic and operate behind the scenes to bring into fruition the vision of our founder. These teams are split into various departments; the management, the finance department, the CRM (Customer Relationship Management), The media team, the facility department, sales department, Audit/inventory, quantity surveying department, engineering department, legal department, and the architecture team. These departments and their team members create all the magic you see.



TOPSY EMMANUEL ESSIEN

FOUNDER

An economist/musician, Mr Topsy is the founder of BigHomes and the visionary who saw a need to provide luxury to various people regardless of social status.



LADY IJEOMA BRISTOL

PUBLIC RELATIONS.

Nigerian Ambassador to Portugal, 2011-2014. Widow late Ambassador Gordon H. Bristol, Nigerian Ambassador to France 2008-2012.



MRS. BERTHA KINGSLEY
HEAD OF SALES/BROKER EXPERT

She is a sales guru and has been in the practice for over five years. She has contributed her quota to the company by bringing her knowledge about sales into play as well as shared this knowledge with her sales team and other staff. This wealth of knowledge has also helped her in seamlessly running the sales department with little to no hitches



PATRICK OKOLO SAN.
LEGAL ADVISER.

Mr. Patrick is a Senior Advocate of Nigeria who has ample experience with property law and ensures the interests of our subscribers and the company are carefully protected.

HUMAN RESOURCES (H.R)



Miss. Jessica Ugbe

PHRi

While keeping the interest and growth of the company at the forefront of my actions and decisions, I am also keen on staff welfare, development and growth. Being HR keeps me connected and in tune with both management and staff, where I stand as a go-between. As much as I count it a privilege, it's also very fun to be able to shoulder such great responsibilities and maintain balance in other aspects of my life.

FACILITY MANAGER



Miss. Francisca Ozioko

The Facility manager is responsible for the maintenance and upkeep of the organization's buildings. The facility manager provides the efficient and effective running of our project for customer satisfaction and comfort.

CUSTOMER RELATIONSHIP MANAGER



Miss. Christine Ishioma Ubaru
C.R.M

Miss. Joy Erahbor
Assistant C.R.M

The Customer Relationship Management department of BigHomes is equipped with maximum capacity to attend to all our clients efficiently in every area, from first-hand information, swift attendance to customers and inquiries, adequate feedback on customer projects, and maintaining a good and long-term relationship with our clients.

ACCOUNTING DEPARTMENT



Miss. Ojonugwa Ibrahim
Accountant

The finance Department is in charge of the Accounting processes of Big Homes. We handle all accounts payable and receivables, reconcile all business transactions for the company using an Accounting software to ensure financial reports are accurate and funds are well organized and utilized for the utmost satisfaction of our clients and company's growth.



CREW

SALES DEPARTMENT



Mrs. Bertha Kingsley

Sales Dept. team lead

Being the power house of the company, the sales team are professionals responsible for finding potential buyers, providing guidance and assisting them through the negotiation processes to get them properties for the right price under the best terms. We determine clients needs and financial abilities to propose solutions that suit them. The sales team also perform comparative market analysis to estimate property value. We promote sales through advertising and listings.

INVENTORY DEPARTMENT

Accountability helps the business grow and also allows for us to improve on our planning and prepare better budgets. The inventory team plays a big role in ensuring that stock on all our projects is properly recorded, efficiently utilized and adequately taken care of. Every team member is trained, articulate, efficient and hardworking



CREW



CREW

LEGAL DEPARTMENT

The legal department is responsible for overseeing the legal aspects of BigHomes. They are responsible for preparing our legal documents and perusing legal documents as well, they negotiate the terms and conditions of our transactions and facilitate the transfer of titles



Miss. Daberechi Austin
Barrister



Ezinne Pamela Nnemeka
Barrister

LEAD GENERATION DEPARTMENT

Every organization has that source that generates lead. We like to call ourselves "the forward-thinking department". The Lead generation is in charge of generating leads for the company and we have the capable hands to move the organization forward.



Miss. Chinwendu Nwaobasi
Lead nurturing team lead



CREW

QUANTITY SURVEYING DEPARTMENT

The quantity surveying department is responsible for the costing of our buildings and our projects. This helps BigHomes to be able to properly ascertain the cost implications of all our projects and adequately prepare for the execution of our projects.



Alli Tobi
Quantity Surveyor



Adeloje Adeyemo
Quantity Surveyor

MEDIA DEPARTMENT



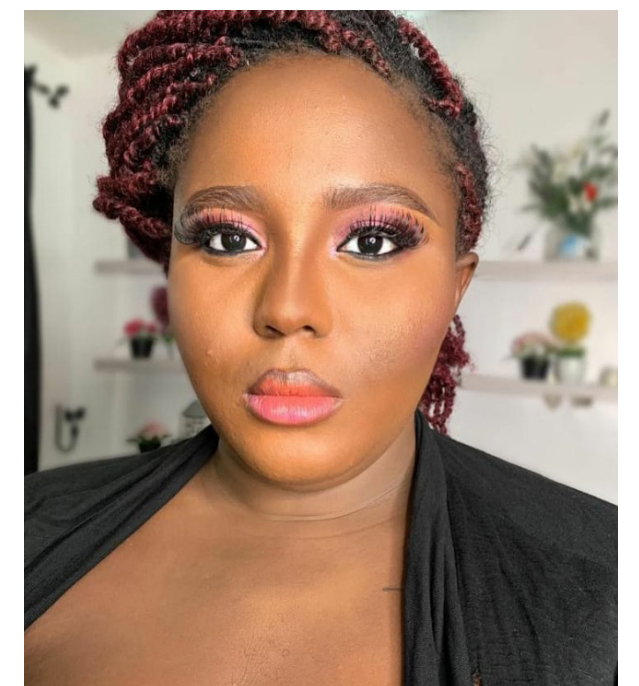
Njemanze Justin O.
Media dept lead

The Media department is focused on bringing visibility to BigHomes through various platforms. This department is responsible for creating offline and online visual contents, like advertising, designs, videos, editorials, marketing items, branding, promotional items and much more, which will help to communicate with targeted audience.

We focus on informing our audience about product and services offered and make it easier



CREW





OUR PROJECTS

BLACK ROOF JAHI

The black roof project is an affordable luxury mini-estate located on Plot 903, Jahi District, FCT, Abuja. This estate sits on a 1500sqm of land. Each terrace have spacious bathrooms with three parking lots per unit. The estate is serviced with 23.5 hours of electricity supply, armed security personnel, gardeners, cleaners, and other amenities. The black roof project is also in proximity to the city center and easily accessible from Next Cash and Carry, Gwarinpa, Katampe District, and Katampe extension.



Automated
Main Entrance



23.5/7
Electricity



Armed
Security Personnel



Gardeners



CHRISTY'S COURT MABUSHI

Christy's court is the perfect blend of exclusivity, luxury and affordability. This project is located within the unruffled surrounding of the Mabushi district, giving you the feel of the perfect property in a very strategic location.

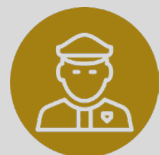
Christy's court was carefully designed putting into consideration the comfort and satisfaction of the client. The priority of Christy's court was given physical presence to the ideas of our client; living a luxurious lifestyle irrespective of the social class by providing a flexible payment.



Automated
Main Entrance



24/7
Electricity



Armed
Security Personnel



Gardeners



BELLO'S COURT MABUSHI

Bello's court by Big Homes is a Haven of privacy and tranquility as it is situated far away from the noise of city life. Bello's court is a mini-estate that provides you with the best features you dream of having in your home; a serene environment, beautifully designed spaces, green areas, and adequate parking spaces. The court sits on a 2400sqm of land and comprising of spacious terraced duplexes for six families. Located in Mabushi, the mini-estate is fully serviced with 24/7 electricity, automated entrances, armed security personnel, and gardeners.



Automated
Main Entrance



24/7
Electricity



Armed
Security Personnel



Gardeners



Z PROJECT MABUSHI

The Z projects by BigHomes is an affordable, luxury mini estate located within the serene and residential environments of Mabushi, by Minister's quarters, FCT Abuja. The estate sits on a 6500sqm land comprising of standalone and semidetached houses designed to accommodate 11 families. These homes are carefully designed to be Eco friendly and sustainable as well.

The calm and peaceful neighborhood of Mabushi makes it a catch as it is situated far away from the noise and bustle of city life, there is also a flexible payment plan that allows you to spread your payment over a period of two years. This is done to accommodate your budget and ensure that everyone can own a home.



Automated
Main Entrance



24/7
Electricity



Armed
Security Personnel



Gardeners



MEJOR CASA ASOKORO

Mejor Casa is an array of meticulously planned personal space that exudes class and magnificence. The project sits on a 2500sqm land comprising of two spacious units of four bedroom semi-detached duplexes and four units of self-contained apartments all carefully planned out on a single plot in Asokoro. This property exudes a peaceful ambience which allows each home to reflect the owner's lifestyle. The estate is fully serviced with automated maintenance, 24/7 electricity, armed personnel & gardeners.



Automated
Main Entrance



24/7
Electricity



Armed
Security Personnel



Gardeners



GIDEL'S COURT LIFE CAMP

The Gidel's court is a well-designed Terrance located in life camp a prime area in Abuja. The Gidel's home gives exclusive comfort and satisfaction. It consists of six units with three bedrooms and a BQ attached to each unit. It has been beautifully designed to comfortably suit six families. Each unit offers a suitable living condition for every occupant and is well equipped. The building gives our client a feel of modernization. We also provide automated security doors, ample parking space, armed security team and 24 hours power supply which enables our client feel comfortable and secured. The Gidel's court has been carefully and thoroughly designed to meet up with the standards of our client and to ensure each client gets the value of their money.



Automated
Main Entrance



24/7
Electricity



Armed
Security Personnel



Gardeners

IVY'S COURT MABUSHI

Ivy's court is a home for clients who enjoy ample light, carefully and excellently designed with large windows that allow for great views, increased ventilation, and ample light to flow into the building. Ivy's court is also designed with a clean environment and surface finishes that draw you in. The security setup of Ivy's court is top-notch, with armed security personnel, beautiful scenery with enough greenery to give you a sense of being connected to nature. Overall, Ivy's court is the perfect fit for clients that enjoy buildings with simple facades, and great views.



Automated
Main Entrance



24/7
Electricity



Armed
Security Personnel



Gardeners



GIBSON'S COURT MABUSHI

Gibson's court is a home that is readily available and is easily accessible to the city in little to no time. Gibson's court is a home that promises quietness after a busy and noisy day.

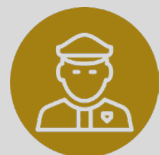
Gibson's court is comprised of twenty units of standalone with exquisite parking spaces, privacy and is centrally located with the best distance to locations that houses facilities or amenities you will be needing.



Automated
Main Entrance



24/7
Electricity



Armed
Security Personnel



Gardeners



AURORA'S COURT MABUSHI

Aurora's court is a magnificent and luxurious terrace located in Mabushi, which is a prime location in Abuja. The Aurora's court consists of five units with three bedrooms and a boys' quarter attached to each unit. It has been beautifully designed for the comfort of five families with an ample parking space which can accommodate three cars per unit. The unit offers a suitable living condition for every occupant and is well equipped with an armed security team. In a bid to give our clients the feel of modernization, each unit has an automated door at the main entrance and all bedrooms are fully en-suite. Over the years, Bighomes have been committed to ensuring green, healthy and luxurious living and this have been the trademark of our projects. Hence, Aurora's court was thoroughly designed with detailed attention to the comfort and satisfaction of our clients regardless of their social class. When you think of comfort, we want you to think Big Homes!



Automated
Main Entrance



24/7
Electricity



Armed
Security Personnel



Gardeners



MAXIM'S COURT JAH

Nothing beats having a place of your own in a prime location in Abuja such as the Maxim's court in Jahi. These 4 units of 4-bedroom terrace is what you would call an affordable luxury. The environment is best known for its tranquility and nature which gives the court natural comfort. Each unit comes with an attached BQ, all bedrooms are en-suite and equipped with modern facilities. This luxurious building also has ample parking space. This property has been designed to have 24 hours of power supply, uniformed security team and also automated security doors and with these you can be rest assured your safety is top notch. Maxim's court has a flexible payment plan. The Maxim's court speaks of class and perfection!



Automated
Main Entrance



24/7
Electricity



Armed
Security Personnel



Gardeners



MUNA'S COURT MABUSHI

Nothing beats an affordable, beautiful and luxurious terrace located in Mabushi, a serene and prime area in Abuja. The Muna's court consists of six units with three bedrooms and a boys' quarter attached to each unit. It has been beautifully designed to comfortably suit six families with an ample parking space which can accommodate three cars per unit. The unit offers a suitable living condition for every occupant and is well equipped with an armed security team. In a bid to give our clients the feel of modernization, each unit has an automated door at the main entrance and all bedrooms are fully en-suite. Muna's court was thoroughly designed with meticulous attention to the comfort and satisfaction of our clients regardless of their social class



Automated
Main Entrance



24/7
Electricity



Armed
Security Personnel



Gardeners



PEARL'S COURT KATAMPE

This magnificent, captivating & luxurious mini estate of four bedroom fully detached duplex (standalone) for 7 families is a fantastic masterpiece that is located in a beautiful serene, clean and well-developed environment at Katampe Extension. Let's talk about the natural atmosphere it provides you with for your calm & quite time for meditation & relaxation. This court has been designed with automated entrance door, electric fence, constant water supply, accessible roads, this court is much secured as there is a standby uniformed security team on site. Pearl's court is a perfect definition of TOP-NOTCH & UNIQUENESS which is an affordable luxury with a flexible payment plan. Big homes provide you with fantastic properties that gives you the standard of the Luxury lifestyle you desire. So when you Think Luxury, Think PEARL'S COURT.



Automated
Main Entrance



24/7
Electricity



Armed
Security Personnel



Gardeners





www.bighomesnigeria.com
Email: lg@bighomes.com | Media@thebighomes.com
Wendy: 08188880025