

# BROCHURE

## PROJECTS

2 0 2 2



# About Big Homes

Big Homes is one of the fastest growing real estate firms in Abuja, Nigeria. It has been three years since its inception but in that period, the firm has been able to establish itself with certain core values; customer satisfaction, integrity, innovation, flexibility, honesty, and quality.

Big Homes entry into the Abuja real estate scene aims to provide potential clients with innovative and contemporary living spaces as well as to impact the real estate scene positively.

The Big Homes brand continues to evolve and seek better ways to serve our customers and contribute our quota to the real estate scene in Nigeria.

## Our Existing projects

- Maxim’s Court
- Muna’s Court
- Bello’s Court
- Pearl’s Court
- Mejr Casa
- Gidel’s Court
- Gibson’s Court
- Black Roof
- Aurora’s Court
- Christy’s Court
- Ivy’s Court
- Z project

## Table of content

Muna’s Court	1
Gibson’s Court	5
Gidel’s Court	9
Pearl’s Court	13
Bello’s Court	17
Mejr Casa	21
Black Roof	25
Maxim’s Court	29



## FEATURES

- Prime location in Mabushi
- 6 unit of 3 bedroom and an attached BQ
- German stamped floors
- 24 hours power supply
- Tiled road in and out of the building
- All bedrooms are en-suite
- Ample parking space
- Uniformed security team

## MUNA'S COURT Mabushi

Nothing beats an affordable, beautiful and luxurious terrace located in Mabushi, a serene and prime area in Abuja. Muna's court consists of six units with three bedrooms and a boys' quarter attached to each unit. It has been beautifully designed to comfortably suit six families with an ample parking space which can accommodate three cars per unit.

The unit offers a suitable living condition for every occupant and is well equipped with an armed security team. In a bid to give our clients the feel of modernization, each unit has an automated door at the main entrance and all bedrooms are fully en-suite. Over the years, Big Homes has been committed to ensuring green, healthy and luxurious living and this have been the trademark of our projects. Hence, Muna's court was thoroughly designed with meticulous attention to the comfort and satisfaction of our clients regardless of their social class.







## PAYMENT PLAN

N48,000,000

OUTRIGHT PAYMENT OR 80%  
DEPOSIT AND BALANCE SPREAD  
WITHIN THREE MONTHS



Prime  
Location



Good  
Investments



Quality  
Houses

## FLOOR PLANS

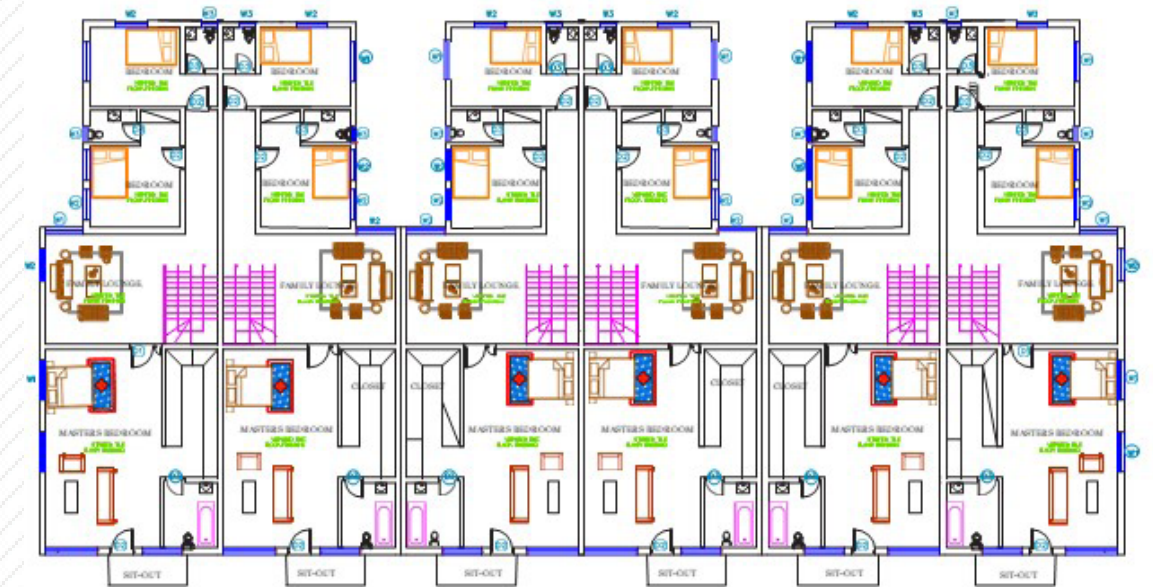
### GROUND FLOOR



#### LEGEND

- LIVING LOUNGE / DINING - 57SQM
- KITCHEN - 21SQM
- B/Q BEDROOM - 12SQM

### FIRST FLOOR



#### LEGEND

- FAMILY LOUNGE - 20SQM
- BEDROOM 2 - 14SQM
- WC / SH - 3SQM
- BEDROOM 3 - 13SQM
- WC / SH - 3SQM
- MASTER BEDROOM - 43SQM
- STAIR HALL / CIRCULATION AREA - 12SQM
- BALCONY - 6SQM





## FEATURES

- Prime location in Mabushi
- 4 bedroom stand alone and an attached BQ for 20 families
- Mixed used estate for both commercial and residential purpose
- A mall inside the estate
- All bedrooms are en-suite
- Enormous parking pace
- Automated security door
- 24hrs power supply
- Uniformed security team

## GIBSON'S COURT Mabushi

You would love this delightful, luxurious and captivating detached duplex located in a prime location and a serene environment in Mabushi. Gibson's court is a beautiful mini estate built for 20 families with each standalone made up of 4 bedrooms and an attached BQ and also a very spacious parking space. Talking about the natural and elegant environment for your convenience. Imagine drifting off to sleep to the subtle sound of nature and awakening to a spectacular sunrise. Gibson's court is the true definition of Beauty and Elegance that gives you the lifestyle you deserve.







## PAYMENT PLAN

**Advanced Shell: N120,000,000**

**Fully Finished: N150,000,000**

50% down payment and  
spread balance between  
twelve months



Prime  
Location



Good  
Investments



Quality  
Houses

## FLOOR PLANS

### GROUND FLOOR



#### LEGEND

- FAMILY LOUNGE - 20SQM
- BEDROOM 2 - 14SQM
- WC / SH - 3SQM
- BEDROOM 3 - 13SQM
- WC / SH - 3SQM
- MASTER BEDROOM - 43SQM
- STAIR HALL / CIRCULATION AREA - 12SQM
- BALCONY - 6SQM

#### LEGEND

- MASTER BEDROOMS - 44SQM
- WC / SH - 7 SQM
- CLOSET -

### SECOND FLOOR



#### LEGEND

- BALCONY - 11SQM
- FAMILY LOUNGE - 34SQM
- BEDROOM 1 - 29SQM
- BEDROOM 2 - 28SQM
- BEDROOM 3 - 25SQM

### FIRST FLOOR







## FEATURES

- Prime location in life camp
- 6 unit of 3 bedroom and an attached BQ
- German stamped floors
- 24 hours power supply
- Tiled road in and out of the building
- All bedrooms are en-suite
- Ample parking space
- Uniformed security team

## GIDEL'S COURT LIFE CAMP

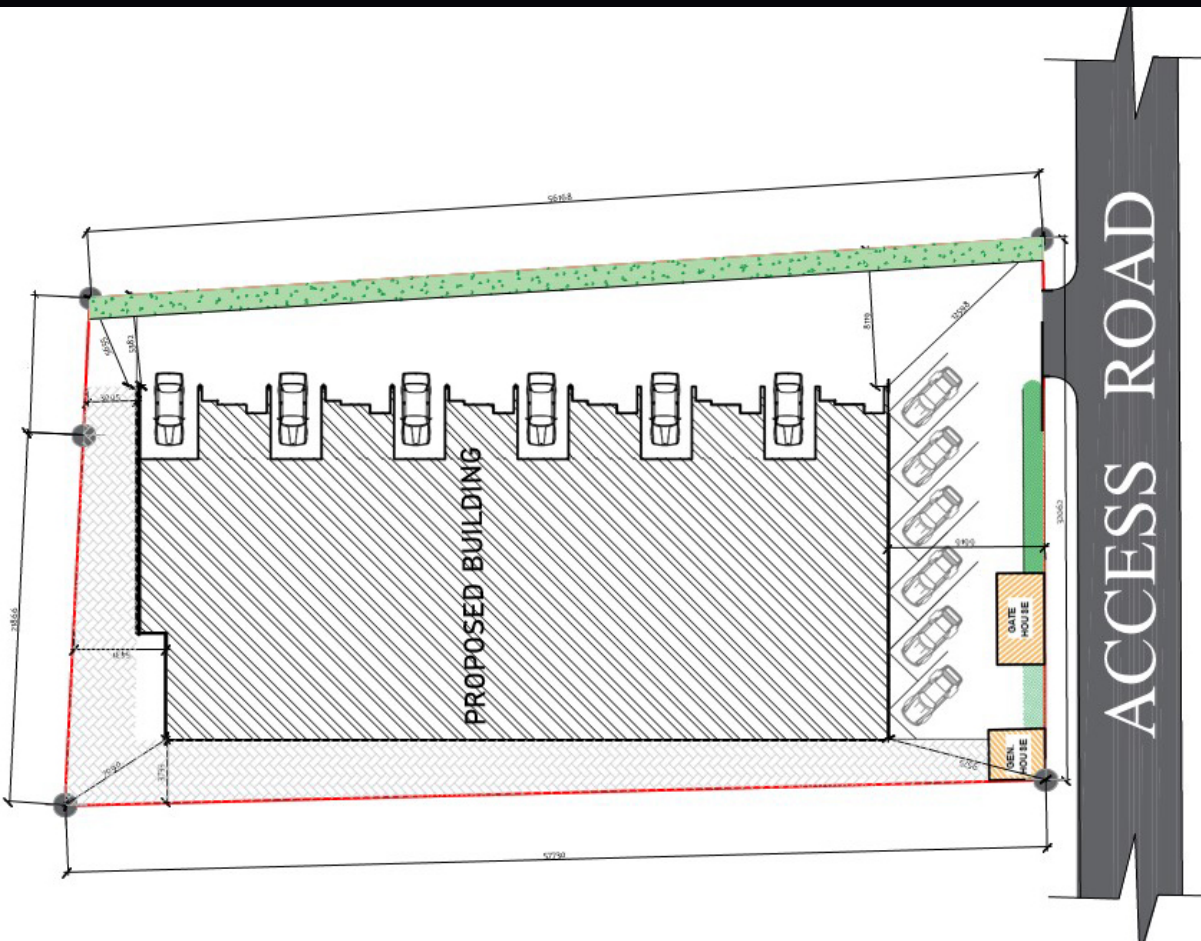
The Gidel's court is a well-designed Terrace located in Life Camp a prime area in Abuja. The Gidel's home gives exclusive comfort and satisfaction. It consists of six units with three bedrooms and a BQ attached to each unit. It has been beautifully designed to comfortably suit six families with an ample parking space which can accommodate two cars per unit.

Also, the court sits on a 17600sqm of land. Each unit offers a suitable living condition for every occupant and is well equipped. The building gives our client a feel of modernization. We also provide automated security doors, armed security team and 24 hours power supply.

The Gidel's court has been carefully and thoroughly designed to meet up with the standards of our client and to ensure each client gets the value of their money. Over the years we at Big Homes have been committed to ensuring green, healthy and luxurious living and this has been the trademark of our projects.







BIGHOMES

## PAYMENT PLAN

N39,000,000

Outright payment or 50% minimum deposit and balance spread within twelve months



Prime Location



Good Investments



Quality Houses

## FLOOR PLANS

### GROUND FLOOR



#### LEGEND

- LIVING AREA - 48SQM
- KITCHEN - 18SQM
- B/Q BEDROOM - 16SQM
- WC / SH - 7SQM

### FIRST FLOOR



#### LEGEND

- MASTERS BEDROOM - 48SQM
- FAMILY LOUNGE - 24SQM
- BEDROOM 1 - 17SQM
- BEDROOM 2 - 19SQM





## FEATURES

- Green area
- Easily Accessible
- Spacious compound
- All rooms en-suite
- Uniformed security personnel
- Ample parking space
- Electric fence
- Tarred roads
- 24/7 power supply
- less than 5mins to the nearest mall ETC

## PEARL'S COURT KATAMPE

This magnificent, captivating & luxurious mini estate of four bedroom fully detached duplex (stand alone) for 7 families is a fantastic masterpiece that is located in a beautiful serene, clean and well developed environment at Katampe Extension, Let's talk about the natural atmosphere it provides you with for your calm & quite time for meditation & relaxation.

This court has been designed with automated entrance door, electric fence, constant water supply, accessible roads.

This court is also very secured as there is a standby uniformed security team on site.

Pearl's court is a perfect definition of TOP-NOTCH & UNIQUENESS which is an affordable luxury with a flexible payment plan, Big Homes provides you with fantastic properties that gives you the standard of the Luxury lifestyle you desire.

So when you Think Luxury, Think PEARL'S COURT!







## PAYMENT PLAN

**Advanced Shell: N85,000,000**  
**Fully Finished: N100,000,000**

Outright payment or 50%  
 minimum deposit and balance  
 spread within twelve months



## FLOOR PLANS

### GROUND FLOOR



#### ► Legend

- LAUNDRY - 4SQM
- KITCHEN - 16SQM
- LIVING LOUNGE - 46SQM
- BEDROOM 1 - 12SQM
- ANTE ROOM - 13SQM
- MAIN ENTRANCE - 3SQM
- TERRACE - 4SQM

### FIRST FLOOR



#### ► Legend

- BALCONY - 9SQM
- BALCONY 2 - 8SQM
- FAMILY LOUNGE - 14SQM
- ROOM - 5SQM
- MASTER ROOM - 24SQM
- BEDROOM 1 - 18SQM
- BEDROOM 2 - 21SQM
- STAIRCASE - 22SQM





## FEATURES

- Prime location in Mabushi
- 6 unit of 3 bedroom and an attached BQ
- German stamped floors
- 24 hours power supply
- Tiled road in and out of the building
- All bedrooms are en-suite
- Ample parking space
- Uniformed security team
- Flexible payment

## BELLO'S COURT MABUSHI

The Bello's court is one of the many projects we have at Bighomes which is conveniently located at mabushi, Abuja. It is a Terrace that consist of six units and an attached BQ for six families in the building. This court has adequate uniformed security, surveillance system and also an automated entrance security door.

Bello's court is located in a quiet and peaceful area. It is an affordable luxury that gives you comfort at its peak. The court is designed with six spacious rooms all en-suite, a spacious parking space that can carefully accommodate three vehicles per unit and it also comes with 24/7 power supply. It is less than 10 minutes' drive to the next filling station and next kingfem plaza.

Bello's court like other Bighomes properties has a flexible payment plan that allow our clients to pay for their home in ways that is most convenient to them.

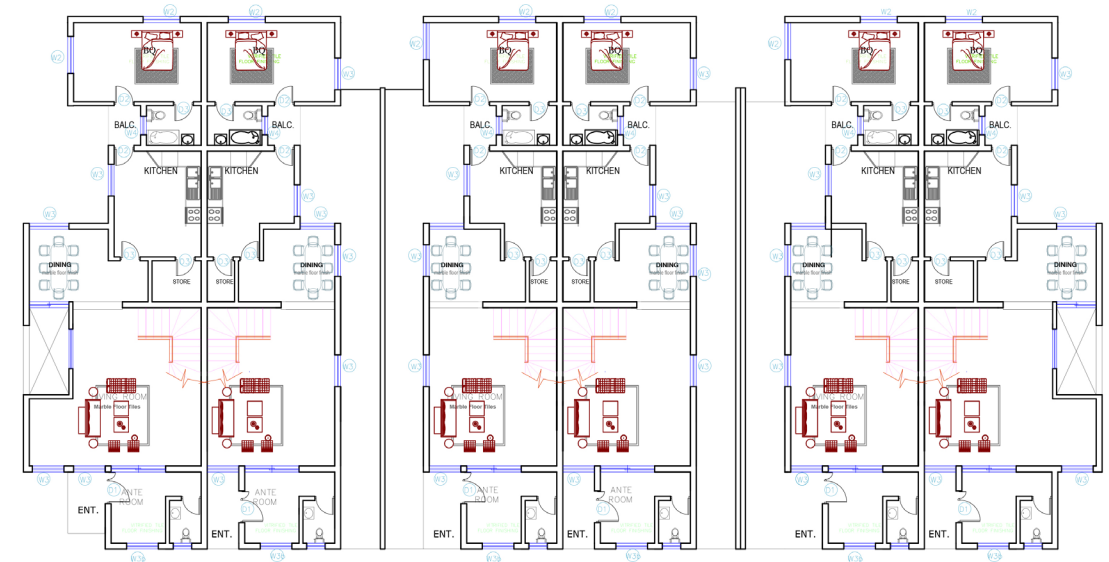




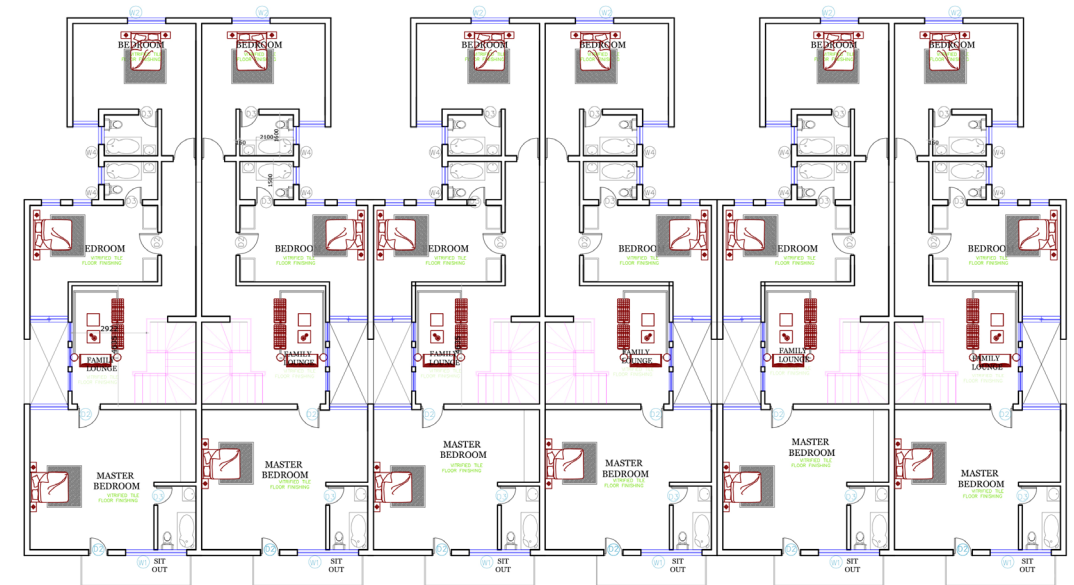


## FLOOR PLANS

### GROUND FLOOR



### FIRST FLOOR



### PAYMENT PLAN

N75,000,000

Outright payment or 80% minimum deposit and balance spread within three months



Prime Location



Good Investments



Quality Houses





## FEATURES

- Green area
- Easily Accessible
- Spacious compound
- All rooms en-suite
- Uniformed security personnel
- Ample parking space
- Electric fence
- Tarred roads
- 24/7 power supply
- less than 5mins to the nearest mall ETC

## MEJOR CASA ASOKORO

Mejor Casa is an array of meticulously planned personal space that exudes class and magnificence. The project sits on a 2500sqm land comprising of two spacious units of four bedroom semi-detached duplexes and four units of self-contained apartments all carefully planned out on a single plot in Asokoro.

This property exudes a peaceful ambiance which allows each home to reflect the owner's lifestyle. The estate is fully serviced with automated maintenance, 24/7 electricity, armed personnel & gardeners.







## PAYMENT PLAN

N280,000,000

Outright payment or 60% minimum deposit and balance spread within three months



Prime Location



Good Investments



Quality Houses

## FLOOR PLANS

### GROUND FLOOR



- Ante Room
- Living Room
- Dining Room
- Kitchen
- Main Entrance

### FIRST FLOOR



- 3 Bedrooms (Left unit)
- BQ Attached (Left unit)
- Family Lounge (Left unit)
- 4 Bathroom (Right unit)
- 3 Bathrooms (Left unit)





## FEATURES

- Green area
- Easily Accessible
- Spacious compound
- All rooms en-suite
- Uniformed security personnel
- Ample parking space
- Tarred roads
- 24/7 power supply

## BLACK ROOF JAHI

The Black Roof project is an affordable luxury mini-estate located on Plot 903, Jahi District, FCT, Abuja. This estate sits on a 1500sqm of land. This majestic view of Black Roof Court is a beautiful mini estate made of 5 unit terrace with 4bedroom and an attached BQ in each Terrace located in a green & clean environment in Jahi.

This Court has good & accessible roads and close proximity to the nearest filling station and hospital. The Black Roof Court has an automated entrance door and comprises of 2 large living rooms, a relaxation garden for your leisure time, large packing space and it's also very secured as there is a security team on standby to ensure the safety of the surrounding with standard 24/7 power supply This property provides you the best value for your money with a flexible payment plan.







## PAYMENT PLAN

N75,000,000

Outright payment or 80% minimum deposit and balance spread within three months



Prime Location



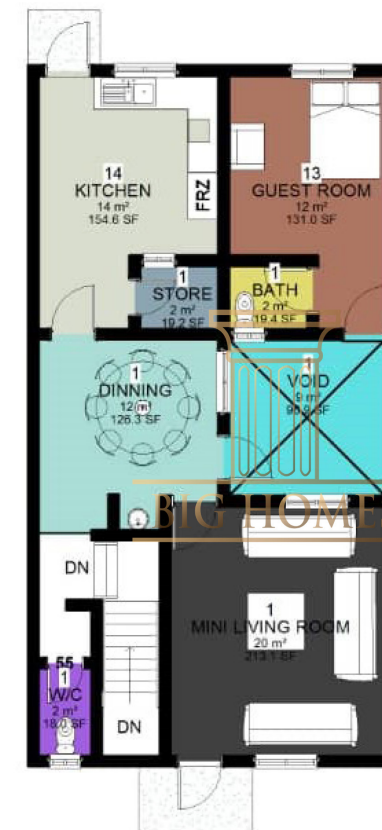
Good Investments



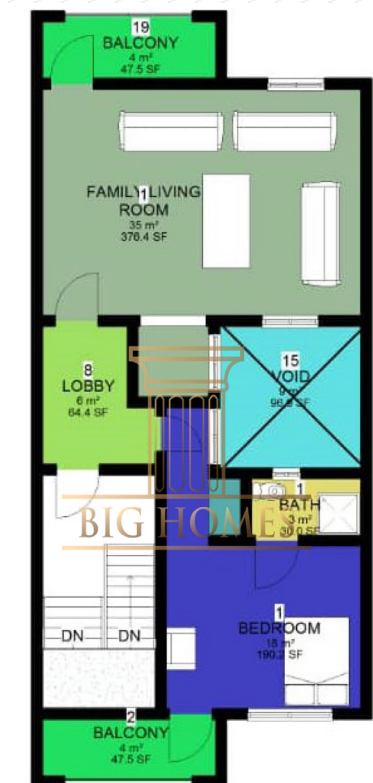
Quality Houses

## FLOOR PLANS

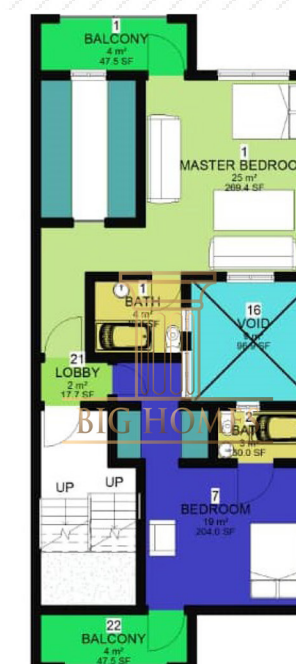
### GROUND FLOOR



### FIRST FLOOR



### SECOND FLOOR







## FEATURES

- Green area
- Easily Accessible
- Spacious compound
- All rooms en-suite
- Uniformed security personnel
- Ample parking space
- Electric fence
- Tarred roads
- 24/7 power supply
- less than 5mins to the nearest mall ETC

## MAXIM'S COURT JAH

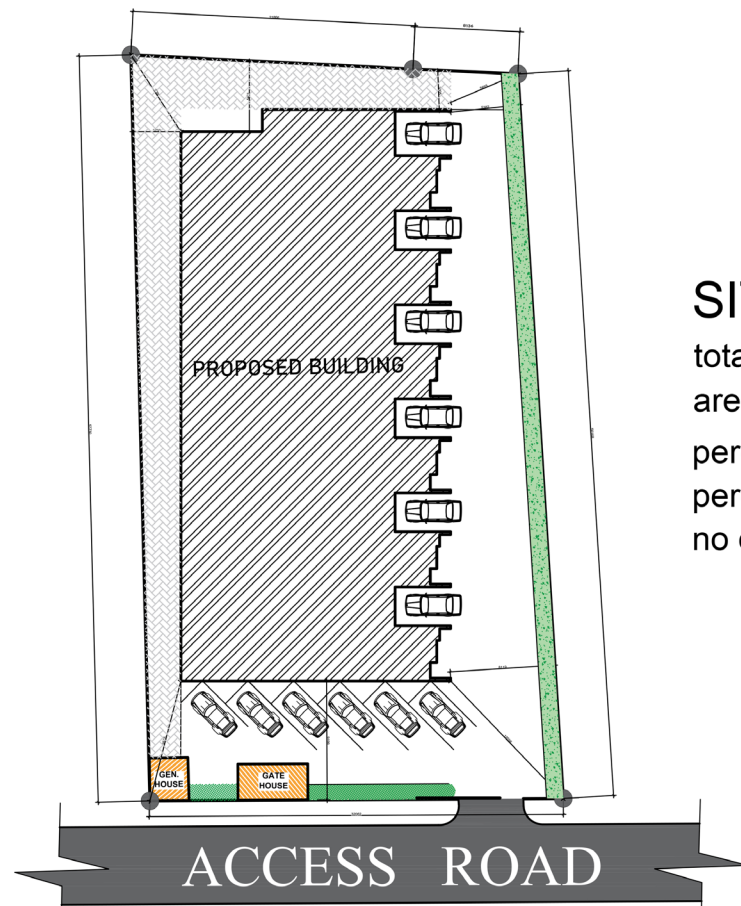
Nothing beats having a place of your own in a prime location in Abuja such as the Maxim's court in Jahi. These 5 units of 4-bedroom terrace is what you would call an affordable luxury. This piece of art was exclusively designed to suit a 21st century lifestyle.

The environment is best known for its tranquility and nature which gives the court natural comfort. Each unit comes with an attached BQ, all bedrooms are en-suite and equipped with modern facilities. This luxurious building also has ample parking space.

This property has been designed to have 24 hours of power supply, uniformed security and also automated security doors and with these you can be rest assured your safety is top notch. Maxim's court has a flexible payment plan. The Maxim's court speaks of class and perfection!







## SITE ANALYSIS.

total land area -----1760.64 m<sup>2</sup>  
 area of built -----805.3 m<sup>2</sup>  
 percentage built ----- 40%  
 percentage unbuilt -----60%  
 no of parking -----12 nos

## PAYMENT PLAN

N47,000,000

Outright payment or 70%  
 minimum deposit and balance  
 spread within three months



Prime  
Location



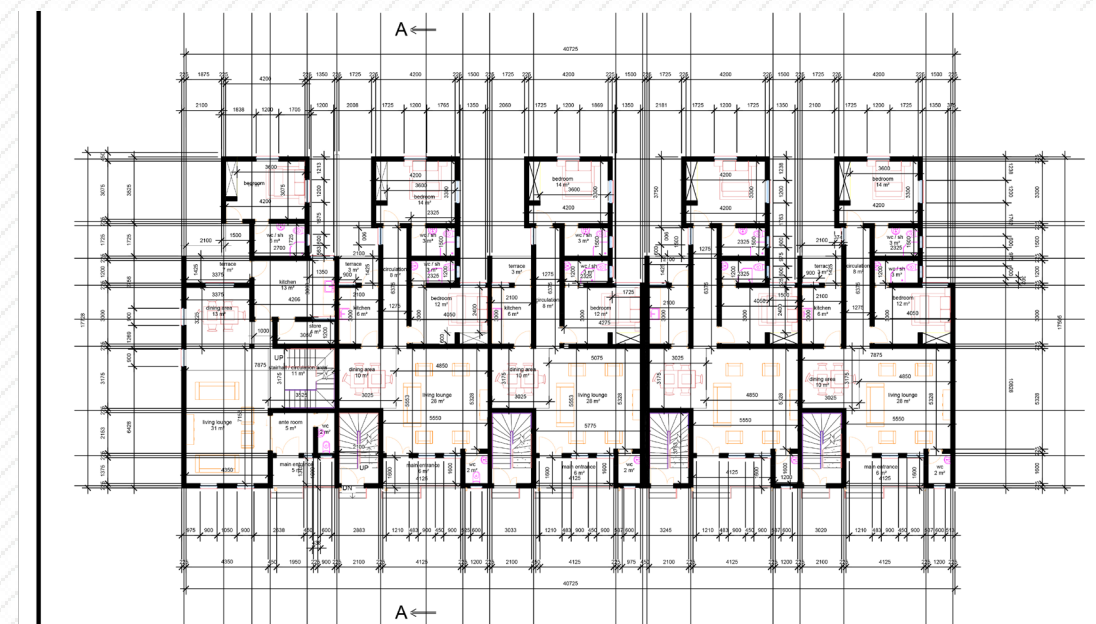
Good  
Investments



Quality  
Houses

## FLOOR PLANS

### GROUND FLOOR



### FIRST FLOOR



FIR





[www.bighomesnigeria.com](http://www.bighomesnigeria.com)  
Email: [lg@thebighomes.com](mailto:lg@thebighomes.com)  
Wendy: 08188880025