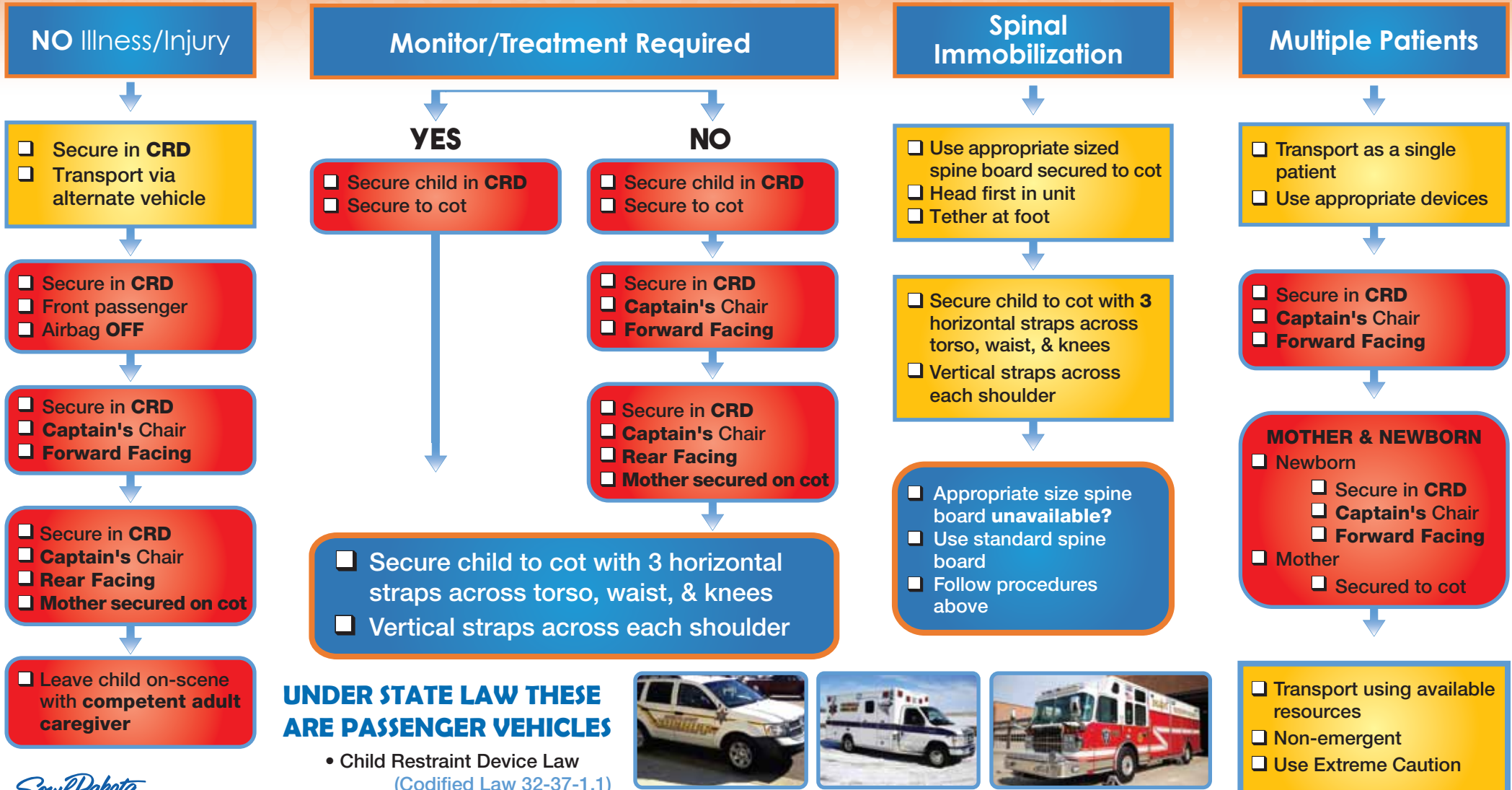




Pediatric Transport Guidelines



***Follow your local EMS transport policies and SOP's.



UNDER STATE LAW THESE ARE PASSENGER VEHICLES

- Child Restraint Device Law (Codified Law 32-37-1.1)



<https://dps.sd.gov/safety-enforcement/highway-safety/safety-priorities/seat-belts-car-seats>



NEVER TRANSPORT A CHILD IN THE FOLLOWING WAY:

- Unrestrained
- On someone's lap
- Using stretcher straps when the child does not fit according to manufacturer's recommendations
- On a bench seat or any seat perpendicular to forward motion of the unit, even if child is in a safety seat

*CRD: Child Restraint Device
 **Always follow manufacturer's recommendations

