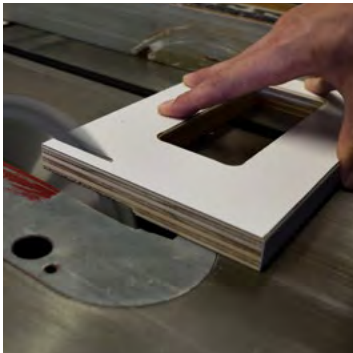


Built to Last. Built for You. Built by Boyd.

Dental Products Catalog



Your office.
Built by Boyd.



Boyd Industries, Inc.

Comfort for your patients. Feature rich for you.



C300 Exam Light
chair mounted.
Page 26.

M3000FB Treatment Chair
with FH327 headrest. Page 3.

**FS-14
Monitor
Mount**
Page 24.

**BOS279 Doctor
Height Stool.** See
all our stools on
pages 9-11.

**CSU356SQ
Chair Side
Delivery Unit**
with Corian
top upgrade.
Page 14.

Boyd Custom Cabinetry
Contact us at 727.471.5072
to discover the office Boyd
can create for you.

The Boyd Product Line

Treatment Chairs.....	2
Examination Chairs	4
Pedo Benches	6
Patient Chair Bases	7
Patient Chair Headrests & Upholstery	8
Doctor & Assistant Seating.....	9
Delivery Systems.....	12
Water Systems & Cabinets.....	22
Monitor Mounts.....	24
Examination Lights.....	26
Video Game Consoles	27
Product Comparisons.....	28

◀ Office of Dr. Ben Gregg,
Gregg Orthodontics,
Ashland, Ohio.

Innovative, functional and ergonomic. That’s what you’ll notice at first glance. Then you’ll see the quality and craftsmanship that goes into every product Boyd creates. From first look, to installation, and beyond—we offer our customers unparalleled products with unparalleled support.

Treatment chairs

Your patients—at ease.



Boltaflex Upholstery
Coated with PreFixx™ protective finish for easy cleaning, durability and color fast. Engineered to resist staining caused by common disinfecting agents. Back and seat stitching options available. See page 8 for choices.

Contoured One-piece Seat
ergonomically designed for patient comfort and easy removal for cleaning or replacement.

Low Voltage DC Actuators (motors)
provide precise, smooth and quiet movement for patient positioning.

Steel Frame and Base Construction
All components are painted using durable, powder-coat process to provide years of corrosion and rust protection. Frame and bases are available in putty or black.

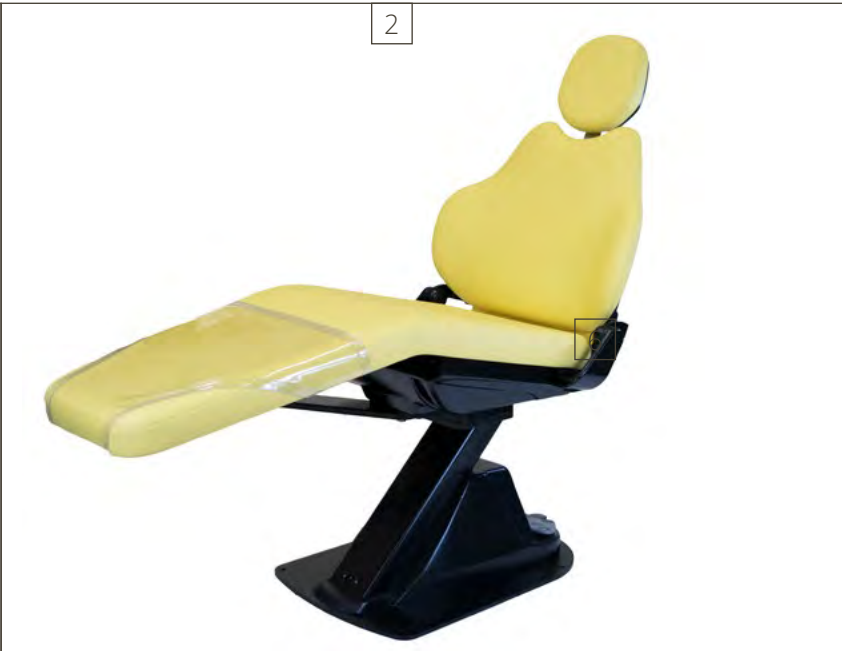
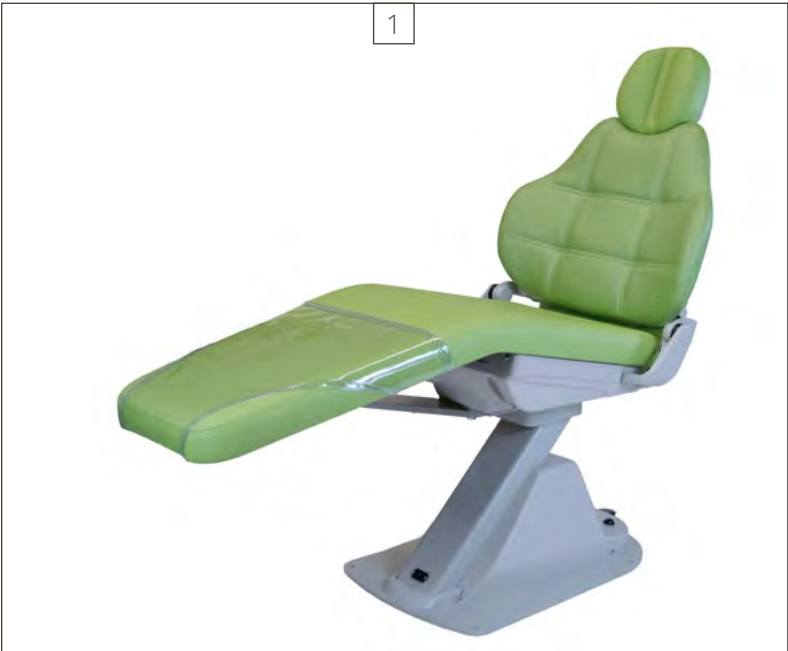
Programmable Foot Control
Digital technology operates the chair movements. Two, 3-way switches control the one-touch operation of three programmed seating preferences, return to home position and an additional button switch to control an attached Examination Light. In addition, one or more manual override levers adjust the back position or elevation (depending on model). Not available on M300X model.

The **M3000LC** is Boyd's most popular orthodontic and pediatric dental patient treatment chair offering a wide variety of features at an affordable price. Unique to the M3000LC is the vertical lift column base which has an 8" vertical stroke which allows the height to be adjusted for maximum ergonomic positioning.

Putty Frame, Standard Foam and Vinyl PN: 100-3004
Black Frame, Standard Foam and Vinyl PN: 100-3004B

Shown with Vista "Paradise" (520242) trimmed with Vista "Snow Cap" (515206), B Style Upholstery, FH317 Headrest, Putty Trim.

The Boyd team is proud to be awarded *Orthotown* Magazine's **Townie Choice Award** for "Best Patient Chairs" for five years in a row. This award voted upon by doctors and their staffs is especially gratifying as acknowledgment of the quality and craftsmanship that goes into every one of our products.



- 1. M300X** is our most economical chair, featuring a fixed pedestal base and motorized reclining back.
Putty Frame, Standard Foam and Vinyl PN: 100-3020
Black Frame, Standard Foam and Vinyl PN: 100-3020B
- 2. M3000FB** features a fixed pedestal base with Boyd's programmable foot control.
Putty Frame, Standard Foam and Vinyl PN: 100-3000
Black Frame, Standard Foam and Vinyl PN: 100-3000B
- 3. M3000CB** has the lowest starting height of the series, making it perfect for Pediatric Dentistry offices. The chair has a cantilever style chair base, operated by easy access membrane switches located on both sides of the chair back. The chair is programmable with three preferred seating positions and return to home button. An optional detachable foot control is available.
Putty Frame, Standard Foam and Vinyl PN: 100-3300
Black Frame, Standard Foam and Vinyl PN: 100-3300B
- 4. & 5. Add an Arm** Optional armrests are available for all M3000 and M3010 series chairs. The arms can be lowered to allow the patient easy ingress and egress from chair.
Putty Trim, Armrest, Right and Left PN: 68-2200
Black Trim, Armrest, Right and Left PN: 68-2200B

All M3000 series chairs are ETL approved.

Examination chairs

Consultations with comfort.

The **M3010LC** offers increased patient positioning options by combining Boyd's lift column base with a synchronized drop toe seat. This configuration makes the M3010LC a versatile platform for conducting routine exams or consultations.

Putty Frame, Standard Foam and Vinyl PN: 100-3014
Black Frame, Standard Foam and Vinyl PN: 100-3014B

Shown with upgraded Ultraleather "Apricot" (2918243), MF Style Upholstery, FH300 Headrest, Putty Trim.

Boltaflex Upholstery
Coated with PreFixx™ protective finish for easy cleaning, a and color fast. Engineered to resist staining caused by common disinfecting agents. Back and seat stitching options available. See page 8 for choices.

Synchronized Drop-toe Seat
designed to raise and lower in unison with back movement.

Steel Frame and Base Construction
All components are painted using a durable powder-coat process to provide years of corrosion and rust protection. Frame and bases are available in putty or black.

Low Voltage DC Actuators (motors) provide precise, smooth and quiet movement to position the patient.

Programmable Foot Control
Digital technology operates the chair movements. Two, 3-way switches control the one-touch operation of three programmed seating preferences, return to home position and an additional button switch to control an attached Examination Light. In addition, one or more manual override levers adjust the back position or elevation (depending on model). Not available on E530 or E535 models.

The award-winning M3010 series is perfect for offices where space may be a constraint or in consultation rooms. The drop-toe design provides the most natural seated position for patients during consultations or minor exams. Combine with Ultraleather Pro™ upholstery and Memory Foam padding for additional patient comfort.



1. M3010FB features a fixed pedestal base with Boyd's programmable foot control.

Putty Frame, Standard Foam and Vinyl PN: 100-3010
Black Frame, Standard Foam and Vinyl PN: 100-3010B

2. M3010CB features a cantilever style chair base operated by easy access membrane switches located on both sides of the chair back. The chair is programmable with three preferred seating positions and return to home button. A detachable foot control is available as an option.

Putty Frame, Standard Foam and Vinyl PN: 100-3310
Black Frame, Standard Foam and Vinyl PN: 100-3310B

3 & 4. E530 & E535 are your records room solution. Available in manual pump or motorized lift base, these chairs will provide years of service. Both chairs feature durable steel frames, ergonomic winged backs, manually synchronized back and toe sections, adjustable armrests and LL69 double-articulating headrests.

The E530 features a manual pump base for vertical lift.
Putty Frame, Standard Foam and Vinyl PN: 100-5307
Black Frame, Standard Foam and Vinyl PN: 100-5307B

The E535 features an electric motor for vertical lift.
Available in Black Frame only, Standard Foam and Vinyl PN: 100-5357B

All M3010 series chairs are ETL approved.

Pedo benches

Comfort for children.



Boyd's Pedo Benches provide an alternative to chairs for treating children. Our benches are adaptable platforms that can be easily modified to meet your specific requirements. Bench tops on both models articulate at the mid-section to make the patient more comfortable and aids in proper positioning. Both models come with a single articulating headrest, foot protector, full extension soft-close drawers with under mount glides and under toe compartment for additional storage.

1. PB4000 is a fully instrumented bench, featuring an automatic delivery system on a pivoting holder bar.
Putty Trim, (2) HP Auto PN: 100-4800
Black Trim, (2) HP Auto PN: 100-4800B
Putty Trim, (2) HP Auto, Clean Water System PN: 100-4800CW
Black Trim, (2) HP Auto, Clean Water System PN: 100-4800CWB
Custom Bench Design in Putty PN: 100-4815
Custom Bench Design in Black PN: 100-4815B
Shown with AH300 headrest and Ultraleather "Wet Sand" (291-3491) upholstery.



2. PB4001 is an economical bench which works well in operatory settings using Boyd rear delivery.
Putty Trim PN: 100-4804
Black Trim PN: 100-4804B
Custom, Non-Instrumentation in Putty PN: 100-4810
Custom, Non-Instrumentation in Black PN: 100-4810B
Shown with Vista "Cardinal" (514978) upholstery, FH327 headrest, Black Trim.

3a/3b. Maple dovetailed drawer box with soft close drawer glides and storage compartment at the foot of the bench come standard on Boyd pedo benches.
4. BT-281 Stainless Steel Instrument Tray 10"x15" (optional). Mounts 18" above the floor on bench with pivot pin to rotate right and left under the head of the patient.
Rigid arm mount includes bracket with two arms.
Putty Trim PN: 95-9155
Black Trim PN: 95-9155B



Patient chair bases

Put a new spin on it.

Boyd offers several base configurations and options to fit your functional specifications. All bases are rated for 500 lbs of lifting capacity to meet the requirements of patients of all sizes.

1. Swivel Base
(Optional) Provides 41.5 degrees of travel from center with locking brake lever located at the 12 o'clock position. *Not available on CB cantilever base chairs.*
Putty PN: 95-0532
Black PN: 95-0532B



2. M300X Fixed column with non-programmable foot control.



3. M3000FB/ M3010FB Fixed column with programmable foot control.



4. M3000LC/ M3010LC Motorized vertical lift column with programmable foot control.



5. M3000CB/ M3010CB Motorized cantilever lift base with programmable hand controls.



6. M3000FB/ M3010FB Shown with optional detachable programmable foot control.

Patient chair headrests & upholstery styles

Boyd exam chairs come standard with extendible headrests. Headrests can be upgraded to articulating headrests for added flexibility.



Standard Headrests

- 1. **FH307** Flat extendible.
Putty PN: 67-1307 Black PN: 67-1307B
- 2. **FH327** Flat extendible w/ ponytail slot.
Putty PN: 67-1327 Black PN: 67-1327B
- 3. **FH317** Flat extendible with "V" pillow.
Putty PN: 67-1317 Black PN: 67-1317B
- 4. **FH300** Flat extendible with magnetic pillow.
Putty PN: 67-1300 Black PN: 67-1300B

Upgrade Headrests

- 5. **AH307** Flat articulating.
Putty PN: 67-1308 Black PN: 67-1308B
- 6. **AH317** Flat articulating with "V" pillow.
Putty PN: 67-1318 Black PN: 67-1318B
- 7. **AH300** Flat articulating with magnetic pillow.
Putty PN: 67-1301 Black PN: 67-1301B
- 8. Reverse view of all articulating headrests.

Upholstery Styles

- 9. **"A" Style** Cross stitch back and seat.
- 10. **"B" Style** Cross stitch back, side stitched seat.
- 11. **"D" Style** Side stitched back and seat.
- 12. **"MF" Memory Foam** Side stitched back and seat.



Embroidery Option
13. **Make it your own.** Add your unique brand or design to the toe section of your treatment chair. Beautifully stitched with your practice name or logo.

Doctor & assistant seating

Take a seat. Ergonomic, stylish and award-winning.

Boyd's stools have been selected as the *Orthotown* Magazine's **Townie Choice Award** winner for five years in a row. We offer a wide variety of doctor and assistant seating models to fit your office needs. We understand the importance of ergonomic design to help reduce doctor and staff fatigue in a busy practice.

The **BOS-279** is Boyd's most popular seat, offering an ergonomic saddle seat, adjustable seat height and tilt with a floating lumbar support back. The seat is designed for a wide range of adjustments to fit you.

BOS-279 Doctor height

Seat height range from 17" - 22"
PN: 200-2791

BOS-279 Assistant height

Seat height range from 20" - 28"
PN: 200-2792

Shown with upgraded Ultraleather "Wet Sand" (291-3491) upholstery.



Fully adjustable padded backrest for proper lumbar support.

Wide ergonomic seat for added stability and comfort.

Seat tilt to allow adjustment to the proper pelvic/spine alignment.

Doctor or assistant height pneumatic cylinders to select the proper height for you and your staff.

Five neoprene coated dual-wheel casters for smooth movement, reduce office noise and prevent damage to flooring.

Doctor and assistant seating

Take a seat. Ergonomic, stylish, and award-winning.



1



1. BOS-46 Features round seat.
Doctor seat height 19" - 24"
PN: 200-4610
Assistant seat height 22" - 30"
PN: 200-4620

2



2. BOS-248 Features round seat with adjustable back.
Doctor seat height 19" - 24"
PN: 200-2481
Assistant seat height 22" - 30"
PN: 200-2482

3



3. BOS-249 Features round seat with adjustable seat angle, adjustable back with floating lumbar support.
Doctor seat height 19" - 24"
PN: 200-2491
Assistant seat height 22" - 30"
PN: 200-2492

4



4. BOS-278 Features ergonomic saddle seat.
Doctor seat height 17" - 22"
PN: 200-2781
Assistant seat height 20" - 28"
PN: 200-2782

5



5. BOS-256 Features round seat, torso wrap arm and fixed foot ring.
Right handed, assistant seat height 22" - 30" PN: 200-5672
Left handed, assistant seat height 22" - 30" PN: 200-5673

6



6. BOS-257 Features round seat, adjustable back with lumbar support, torso wrap arm and fixed foot ring.
Right handed, assistant seat height 22" - 30" PN: 200-5772
Left handed, assistant seat height 22" - 30" PN: 200-5773



OPTIONS

Fixed Foot Ring for all models
PN: 60-6400

Adjustable foot ring for all models
PN: 60-6401

Delivery Systems

Pick the size and features for your office.



C300 Exam Light

ceiling mounted. See all our lights on page 26.

FS-1 Monitor Mount

See all our monitor mounts on pages 24-25.

M3000LC Treatment Chair

See our treatment chairs on pages 2-5.

CSU356FLM Delivery System

Find a delivery system that's right for your office, on pages 13-18.

Built for you!

Boyd builds ten standard delivery unit models for either chair side, rear or concealed delivery to meet your requirements for functionality and efficiency. The units are offered in a wide variety of laminate choices from manufactures such as Formica™, Nevamar™, and Wilsonart™ to help express your style in an almost limitless selection of colors and grains. All units are FDA-listed devices and produced at our ISO 13485:2016 certified facility where we use the highest quality materials to assure many years of service.

But it doesn't stop there. Let Boyd customize to fit your office.

If our standard delivery unit models don't fit your needs, just let us know. Boyd offers free custom design consultation to work with you in designing the delivery unit of your choice. We can help meet the size, features, and options of your specification while maintaining the high quality and craftsmanship of our standard units.

Contact us at **727.471.5072** to arrange to speak with one of our designers.

CSU356 series is our most popular series offering ample storage in a unit less than 25" wide. The CSU356's tapered design makes it a popular choice for offices of all sizes.

Shown as free standing unit with Formica "Oiled Walnut Naturelle Finish" (5487-NT) laminate, Silestone "Bamboo" top, putty straight tubing, stain nickel handles, and keyboard drawer flip down front.

CSU356FS Free standing unit (pictured)

Right handed PN: 356-0701

Left handed PN: 356-0701L

Clean water option, right handed

PN: 356-0701CW

Clean water option, left handed

PN: 356-0701CWL

CSU356-FLM Full-length mobile unit

Right handed PN: 356-0702

Left handed PN: 356-0702L

Clean water option, right handed

PN: 356-0702CW

Clean water option, left handed

PN: 356-0702CWL

Plenty of A/C power receptacles

to accommodate all your equipment. External 115v medical-grade duplex with USB ports receptacle and internal fused 115v ETL rated receptacle.

Undermount soft-close drawer glides

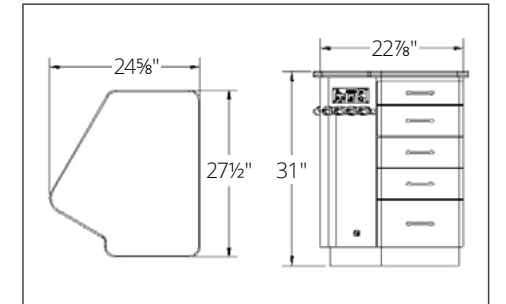
with dovetailed hardwood drawer boxes for smooth operation.

Automatic delivery system

with two hand pieces, HVE, saliva ejector and 3-way syringe. Choice of either straight or coiled tubing.

¾" high-grade plywood interior construction for increased durability and strength.


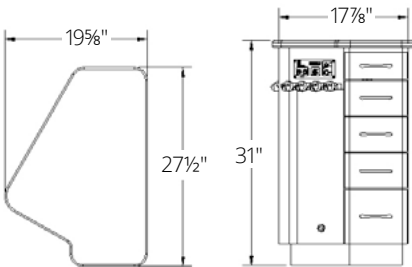

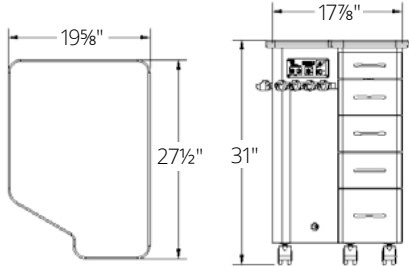

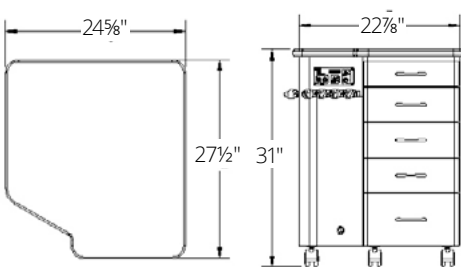

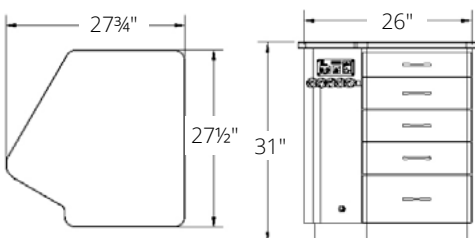

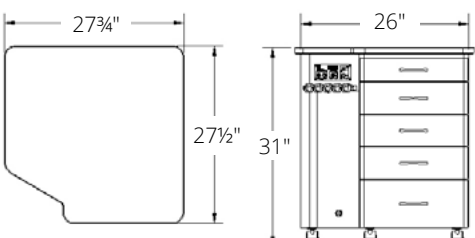
Mobile or Free-standing bases to suit your practice needs.



◀ Office of Dr. Valerie Woo,
NOVA Pediatric Dentistry and Orthodontics,
Ashburn, Virginia.

Delivery systems

Create the perfect delivery unit for your office.

<div>1</div>  	<div>2</div>  	<div>3</div>  	<div>4</div>  	<div>5</div>  
---	--	---	--	--

1. CSU351 is our narrowest series, fully instrumented chair side units, measuring less than 20" wide. The system offers all the standard features of our larger units but with a more compact footprint. The CSU-351's tapered design makes this a popular choice for smaller offices. Shown as mobile unit with Wilsonart "Upton Walnut" (7971K-12) Laminate, Wilsonart "Khaki Brown" (D50-60) Laminate Top, Putty Coiled Tubing, Satin Nickel Handles.

CSU351-FS Free standing unit
Right handed PN: 351-0761
Left handed PN: 351-0761-L
Clean water options:
Right handed PN: 351-0761-CW
Left handed PN: 351-0761-CWL

CSU351-FLM Full-length mobile unit
Right handed PN: 351-0765
Left handed PN: 351-0765L
Clean water options
Right handed PN: 351-0765CW
Left handed PN: 351-0765CWL

2. CSU351SQ has the same narrow footprint as the CSU351 but features a squared back, providing more countertop space and rear storage.

Shown as mobile unit with Wilsonart "Woolami Brush" (4746-60) laminate, Silestone "Vortium" top, putty coiled tubing, and satin nickel handles.

CSU351SQ-FS Free standing unit
Right handed PN: 351-0761SQ
Left handed PN: 351-0761SQ-L
Clean water option, right handed PN: 351-0761SQ-CW
Clean water option, left handed PN: 351-0761SQ-CWL

CSU351SQ-FLM Full-length mobile unit
Right handed PN: 351-0765SQ
Left handed PN: 351-0765SQL
Clean water option, right handed PN: 351-0765SQCW
Clean water option, left handed PN: 351-0765SQCWL

3. CSU356SQ provides all benefits of the CSU356 but features a squared back, providing more countertop space and rear storage.

Shown as free standing unit with Formica "Folkstone Sculpted Finish" (927-SP) laminate, Silestone "Zirconium" top, black coiled tubing, and satin nickel handles.

CSU356SQ-FS Free standing unit
Right handed PN: 356-0701-SQ
Left handed PN: 356-0701-SQL
Clean water option, right handed PN: 356-0701-SQCW
Clean water option, left handed PN: 356-0701-SQCWL

CSU356SQ-FLM Full-length mobile unit
Right handed PN: 356-0702SQ
Left handed PN: 356-0702SQL
Clean water option, right handed PN: 356-0702SQCW
Clean water option, left handed PN: 356-0702SQCWL

4. CSU362 series is our widest chair side delivery units offering loads of storage in a 27 3/4" wide unit. The CSU362's tapered design makes it a versatile choice for offices needing more operatory storage.

Shown as free standing unit with Formica "Weathered Ashed Woodbrush Finish" (8842-WR) laminate, Corian "Aqualite" top, putty coiled tubing, and satin nickel handles.

CSU362-FS Free standing unit
Right handed PN: 362-0701
Left handed PN: 362-0701-L
Clean water option, right handed PN: 362-0701CW
Clean water option, left handed PN: 362-0701CWL

CSU362-FLM Full-length mobile unit
Right handed PN: 362-0702
Left handed PN: 362-0702-L
Clean water option, right handed PN: 362-0702CW
Clean water option, left handed PN: 362-0702CWL

5. CSU362SQ series is our widest chair side delivery units offering loads of storage in a 27 3/4" wide unit. The tapered design makes this a versatile choice for offices needing more operatory storage.

Shown as mobile unit with Wilsonart "Satin Stainless" (4830K-18) laminate, Corian "Arrowroot" top, black coiled tubing and satin nickel handles.

CSU362SQ-FS Free standing unit
Right handed PN: 362-0701-SQ
Left handed PN: 362-0701-SQL
Clean water option, right handed PN: 362-0701-SQCW
Clean water option, left handed PN: 362-0701-SQCWL

CSU362SQ-FLM Full-length mobile unit
Right handed PN: 362-0702SQ
Left handed PN: 362-0702SQL
Clean water option, right handed PN: 362-0702SQCW
Clean water option, left handed PN: 362-0702SQCWL

Need mobile storage for your supplies? Add an ORT-101 to your order.

6. ORT-101 Mobile Cart
Radius corners, 3/4" plywood construction, and four caster base. Drawer configuration: false front with pull handle, side, pull-out work surface, four small drawers and one medium drawer with bow style pulls.

34 1/4"H x 26 1/4"W x 21 1/4"D
Pull Out, right PN: 300-1180
Pull Out, left PN: 300-1181
Corian 1" solid surface top PN: 65-9582
Silestone 1" solid surface top PN: 65-9585
Custom top per drawing PN: 65-9584

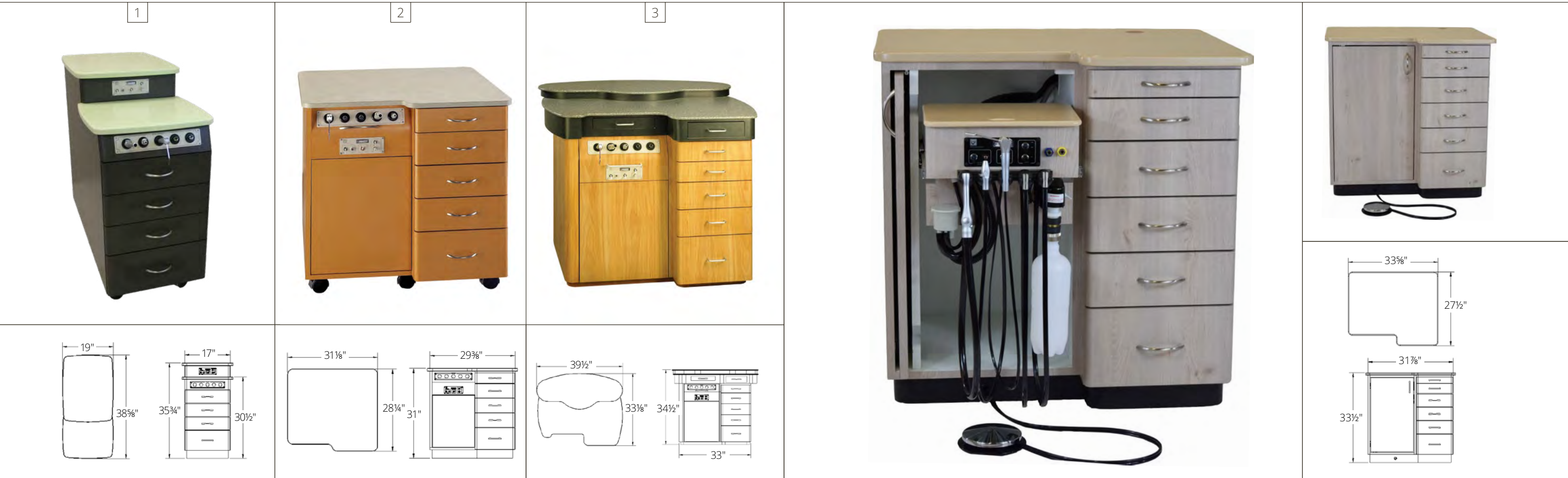


Delivery systems

Retraction units, ideal for rear delivery techniques.

Delivery systems

Concealed delivery unit for visual appeal.



1. CSU370SL retraction delivery system is a slim line version of the CSU370SQ measuring 19" wide for compact operatories. This versatile unit can be used for side or rear delivery. The CSU370SL includes a removable top for easy cleaning.

Shown as mobile unit with Wilsonart "Slate" (D91-60) Laminate, Corian "Noble Ecru" top, and satin nickel handles.

CSU370SL-FS Free standing unit
Left or right handed PN: 370-1102
Clean water option left or right handed PN: 370-1102CW

CSU370SL-FLM Full-length mobile unit
Left or right handed PN: 370-1101
Clean water option, left or right handed PN: 370-0902SQCW

2. CSU370SQ retraction delivery system used in pediatric or orthodontic offices. The mobile unit provides many of the same storage benefits of the CSU-3351 but with the ability to be moved into the ideal position for you and your staff. A removable top allows for easy cleaning.

Shown as mobile unit with Nevamar "Copper Fusion 2" (FN1002T) Laminate, Nevamar "Coconut Bark" (S5058T) Laminate Top.

CSU370SQ Free standing unit
Right handed PN: 370-0901SQ
Left handed PN: 370-0901SQL
Clean water option:
Right handed PN: 370-0901SQCW
Left handed PN: 370-0901SQCWL

CSU370SQ-FLM Full-length mobile unit
Right handed PN: 356-0902
Left handed PN: 356-0902L
Clean water option:
Right handed PN: 356-0902CW
Left handed PN: 356-0902CWL

3. CSU3351 retraction delivery system can be used in pediatric or orthodontic offices. The pull-out design makes it ideal for rear delivery techniques. The two-tiered countertop provides approximately 9 square feet of space! This CSU3351 is offered as a free standing unit only.

Shown with Formica "Natural Cherry" (7737-58) laminate and Corian "Moss" top.

CSU3351 Free standing unit
Right handed PN: 300-0755
Left handed PN: 300-0755L
Clean water option, right handed PN: 300-0755CW
Clean water option, left handed PN: 300-0755CWL

CDU415 is Boyd's unique Concealed Delivery Unit that keeps dental hand pieces out of sight of young dental patients while making them easily accessible to dentists and their chairside assistants. The CDU was created out of Boyd's intimate understanding of the needs of the pediatric dentistry profession. It provides a fully instrumented chair side unit with all the standard features of our traditional chair side unit but with additional work surface and visual appeal.

Contact our Design Team at **727.471.5072** to learn how to integrate into 12 O'clock cabinetry.

The unit features a fully instrumented pull-out drawer with floating work surface that includes two auto-on handpieces, HVE, Saliva Ejector and 3-way syringe. The pocket style front door enables the door to be tucked away to prevent interference. The unit can be configured for Boyd's Clean Water System or 3rd party nitrous oxide system.

CDU415-FS Free standing unit
Right handed PN: 330-0701
Left handed PN: 330-0701L
Clean water option, right handed PN: 330-0701CW
Clean water option, left handed PN: 330-0701CWL

CDU415-FLM Full-length mobile unit
Right handed PN: 330-0702
Left handed PN: 330-0702L
Clean water option, right handed PN: 330-0702CW
Clean water option, left handed PN: 330-0702CWL

Delivery systems

Rear delivery, 12 O’Clock cabinets.

Like all Boyd cabinetry, our Rear Delivery Units (RDU) can be custom designed to meet your practice requirements. Standard units are designed to accommodate 4-handed dentistry by including an assistant package with our doctor package on the unit’s articulating, retractable arm. Our RDUs are ergonomically designed, durable and versatile to adapt to practice requirements. Standard or custom units are built with Boyd’s high level of craftsmanship. Experience our “Built by Boyd” quality!



Standard Features:

- Articulating rear delivery arm with both doctor and assistant packages
- Self-contained, clean water system with 2 liter bottle
- Pocket door, bottom storage cabinet for customer-provided nitrous oxide unit
- One, five-drawer bank, with easy side cabinet access
- Frosted Plexiglas windows in upper cabinet doors
- Durable ¾" Plywood interior construction
- Corian™ solid surface countertop with “floating” work surface on articulating arm
- A wide selection of laminate veneer exteriors finishes by Wilsonart™, Formica™ and Nevamar™
- Beautiful ⅝" maple drawer boxes; 3mm edge banded drawer fronts; undermount, full extension, soft close, drawer glides; concealed, soft-close, European-style door hinges; and 96mm bow style handles.

Optional Features:

- Upper cabinet pass-through
- Mask or glove box dispenser
- Stainless steel under mount sink
- Track-style monitor mount system
- LED task lighting
- Soap dispenser

Rear delivery unit

Putty tubing PN: 300-1300
Black tubing PN: 300-1300B

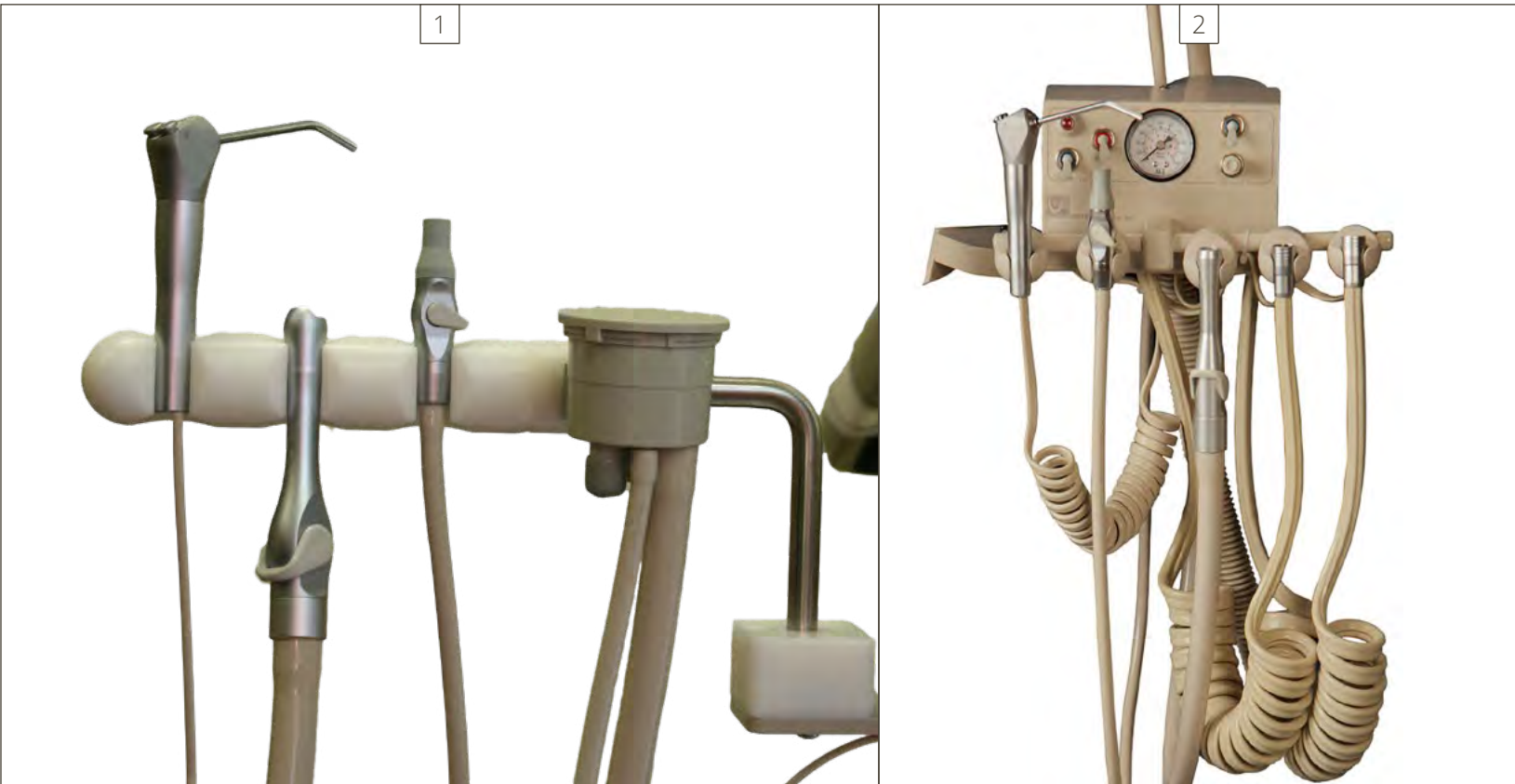
Custom rear delivery unit

Putty tubing PN: 300-1301
Black tubing PN: 300-1301B



Delivery systems

Chair mount systems for ease and economy.



1. AP-11 Assistant Package

Standard features include: white swing mount holder bar with 3-way syringe, HVE, saliva ejector, and solids collector. Mounts on the right or left side of chair. Can be mounted on M300X, M3000 series and M3010 series chairs.

Right mount, putty PN: 95-2390
Right mount, black PN: 95-2390B
Left mount, putty PN: 95-2391
Right mount, black PN: 95-2391B

2. CSU-320 Under Arm Delivery Unit

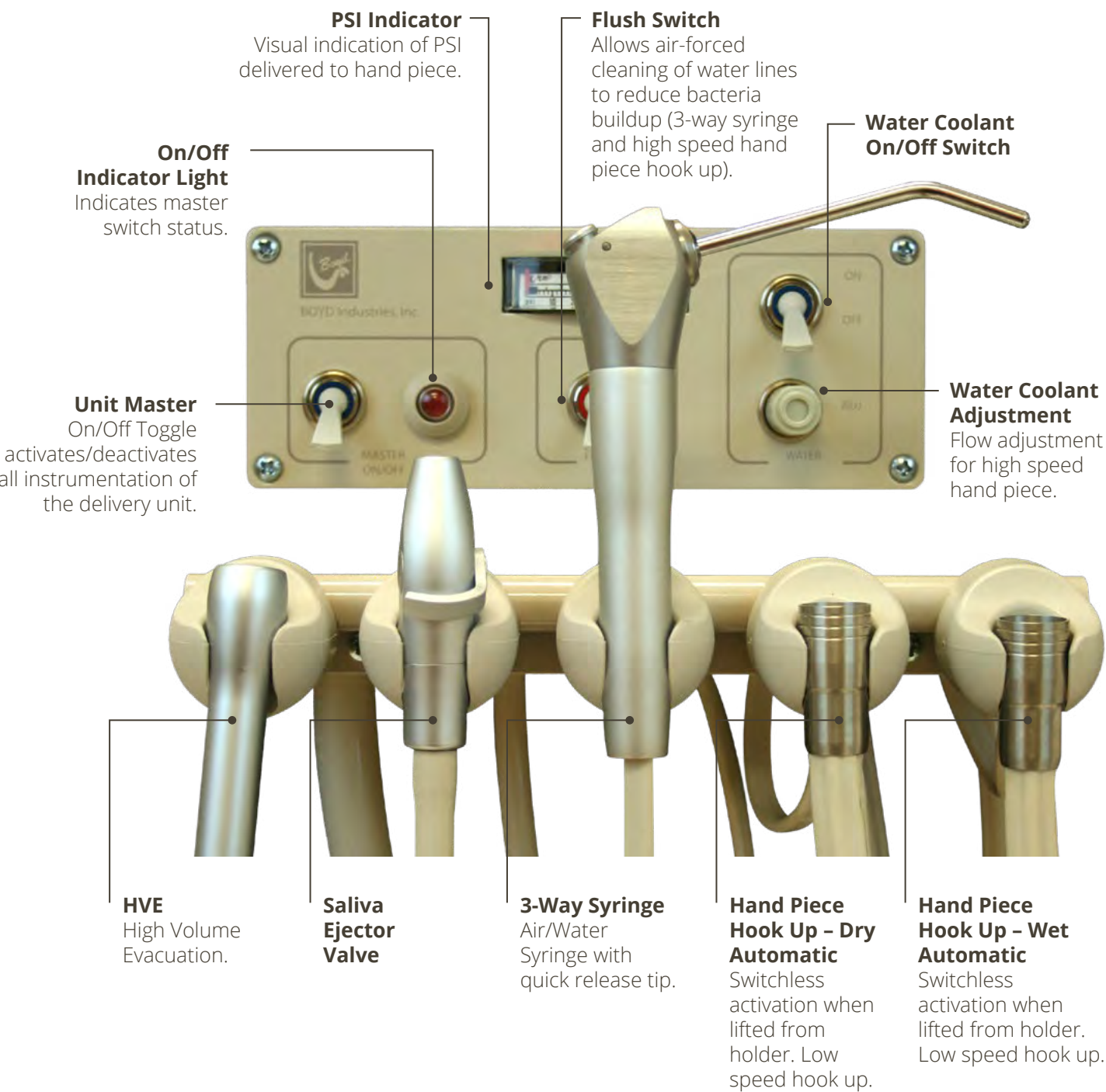
Standard features include: side chair mount, 150° swivel from chair side, low and high speed syringe with coiled tubing. Can be mounted on E530/E535, M300X, M3000 series and M3010 series chairs.

For chair models 530/535
Right mount, putty PN: 320-1020
Right mount, black PN: 320-1020B
Left mount, putty PN: 320-1021
Left mount, black PN: 320-1021B

For chair models 300X/3000/3010
Right mount, putty PN: 320-1022
Right mount, black PN: 320-1022B
Left mount, putty PN: 320-1023
Left mount, black PN: 320-1023B

Delivery systems

Standard features packed with Boyd quality.



3HP Auto System is available

Supplied water system PN: 20-5789

Self-contained water system PN: 20-5789 CW

Delivery system options

Built for You! Built by Boyd!

Boyd delivery systems whether chair side, rear delivery or concealed can be customized to meet your functional requirements. Our sales team can work with you to design a unit accessorized with one or more of the many optional features Boyd has to offer. If you don't see it here – just ask! Boyd stocks a wide variety of components, laminates and solid surface materials to bring you many years of satisfaction and service.



- 1. High Volume Evacuator** PN: 20-5242K/20-5442BK
2. 3-Way Syringe PN: 20-5848/20-5848B
3. Air-Only Syringe PN: 20-5859/20-5859B
4. Handpiece Bar and Holders
Bar PN: 95-9941/95-9941B Holders PN: 20-7100/20-7100B
5. Air Quick Disconnect (Yellow) PN: 20-5575
Water Quick Disconnect (Blue) PN: 20-5574
6. Fiber Optic Hand Piece PN: 20-5884/PN 20-5884B
7. Mask Box Holder Dispenser – Side Mount PN: 50-2109
8. Single Glove Box Holder Dispenser – Side Mount PN: 65-9140
9. Single Glove Box Holder Dispenser – Drawer Mount PN: 50-2089
10. Side Mount Laminated Chart Holder PN: 65-9140
With Two Pencil Holders PN: 65-9910
Pencil Holder Only (mountable on cabinet top or chart holder) PN: 65-9910
11. Above Grade Utility Box PN: 20-5382K/20-5382BK
12. UC-1000 Below Grade Utility Box PN: 20-5385

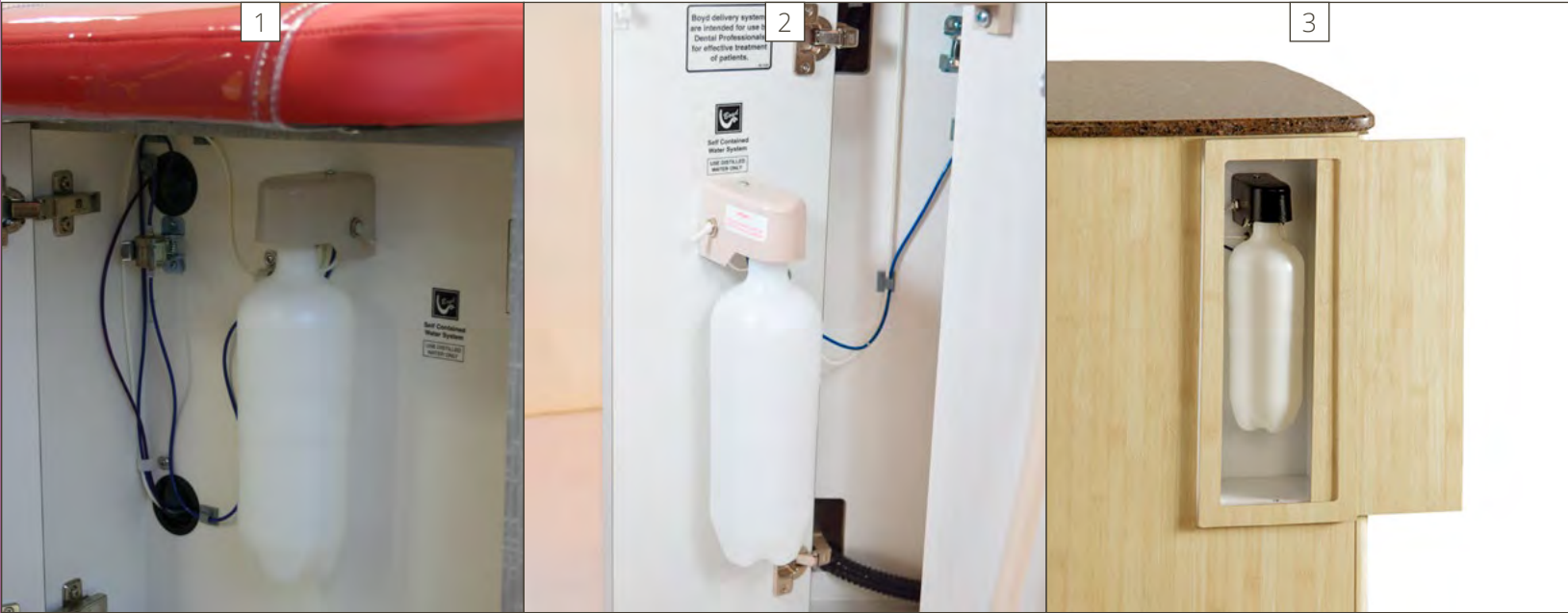
Drawer Insert Organizers
Fits cabinet models 356, 356SQ, 370, 370SQ and 3351:
13. Four Straight Pockets PN: 50-0305
14. Three Small, Three Medium Pockets PN: 50-0325
15. Two Large, Two Small Pockets PN: 50-0345
Fits cabinet models 362 and 362SQ:
16. Five Straight Pockets PN: 50-0315
17. Six Small, Three Medium Pockets PN: 50-0335
18. Two Large, One Long, Two Small Pockets PN: 50-0355

Self-contained water systems

Convenient, organized and sanitary.

The use of distilled or sterile water in the delivery unit aides in the prevention of mineral and other deposits that can build up in your system. Further, it eliminates the need for a backflow check valve when the unit is plumbed to your commercial water source reducing expense and maintenance.

Model CWS-07 Self Contained Water System comes standard with one liter water bottle, mounting bracket, pressure adjustment and interconnect tubing. All units are designed for easy access to replenish water as needed. Water bottle compartments are located on the side for most CSUs and at the toe for Pedo Benches.



1. Bottle located in toe compartment of PB4000 (page 6)

2. Bottle located in side door on CSU351, 356 and 362 (pages 13-15)

3. Bottle located in side hatch on CSU370 (page 16)



Options
4. Quick disconnect for water bottle - fits both one and two liter bottles. Makes changing bottles a snap.
PN: 20-5755
1 liter Water Bottle PN: 20-5400
2 liter Water Bottle PN: 20-5386

▲
Office of Dr. Emily Watson,
Warsaw Orthodontics,
Plymouth, Indiana.

Let Boyd help design the office of your dreams. Our designers are here to help put your vision to paper— our builders make that vision a reality. Discover the exacting standards that Boyd is known for, and why we proudly say Built by Boyd!

Monitor mounts

Better cable management means less mess and clutter.



Boyd supplied monitor mounts are designed for Boyd's CSUs to minimize external exposed cabling between monitor and computer. The video signal cable and power cord can be routed via the 7½" monitor mount riser through a hole in the countertop to the computer storage compartment and internal power receptacles. This means fewer cables to interfere with your work surface and unsightly clutter.

FS-14 Monitor Mount



- 1. FS-1 Flat Screen and iPad Mount** Compact and adjustable, two tilt joints, 50° tilt, 360° pivot. Putty PN: 60-0621, Black PN: 60-0621B
- 2. FS-9 Flat Screen w/ Mini Keyboard Tray** Same features as the FS-1 Plus Mini. Putty PN: 60-0634, Black PN: 60-0634 B
- 3. FS-14 Flat Screen w/ Full Size Keyboard Tray and Mouse Pad** Same features as the FS-1 Plus full size keyboard tray. Putty PN: 60-0631, Black PN: 60-0631B
- 4. FS-21 Flat Screen Dual Monitor Mount** Parallel support for two 22" monitors, 50° tilt, any direction, 5" forward adjustment, 5" height adjustment, 360° pivot. PN: 60-0636, Black PN: 60-0636B
- 5. FS-29 Flat Screen Dual Monitor Mount w/ Mini Keyboard Tray** Same features as the FS-21 plus mini keyboard option. Putty PN: 60-0638, Black PN: 60-0638B
- 6. FS-24 Flat Screen Dual Monitor Mount w/ Full Size Keyboard Tray** Same features as the FS-21 with full size keyboard tray. Putty PN: 60-0637, Black PN: 60-0637B
- 7. FS-15 Apple Monitor Mount with Full Size Keyboard Tray and Mouse Pad** Built to hold the weight of up to 27" monitor. No need to remove the stand. Putty PN: 60-0614, Black PN: 60-0614B
- 8. FS-5 Apple Monitor Mount** Same features as the FS-15 without the keyboard tray. Professionally conceals the desk stand. Putty PN: 60-0635, Black PN: 60-0635B
- 9. SM-2 Laptop Mount** Swivel stand, sturdy and convenient. Putty PN: 60-0622, Black PN: 60-0622B

Examination lights

Leading the way with the latest technologies.



1. C300 features an IR Sensor for power on/off, manual light intensity control up to 30,000 LUX and a 4 LED head measuring 12.8" x 8.7".

Putty PN: 600-4505 Black PN: 600-4505B

2. C500 features IR Sensor for power on/off, manual light intensity control up to 50,000 LUX and a 8 LED head measuring 11" x 6.5".

Putty PN: 600-4530 Black PN: 600-4530B

3. Cabinet Mount Light Post Clamp

Putty PN: 20-1504 Black PN: 20-5104B

4. Post Mount Light post clamp, mounts to 2" post assembly.

Putty PN: 20-5107 Black PN: 20-5107B

5. Rigid Folding Arms Aluminum 1" square x 12" long arm. ½" pin, ⅝" bushing.

Putty PN: 95-9108 Black PN: 95-9108B

6. BT-280 Bracket Table Stainless steel 10"x15" tray, mounts on a standard Boyd light post. Post and chair mount assembly sold separately.

Fits models M300X, M3000 series and M3010 series.

Rigid arm mount, includes post clamp with two arms

Putty PN: 95-9139 Black PN: 95-9139B

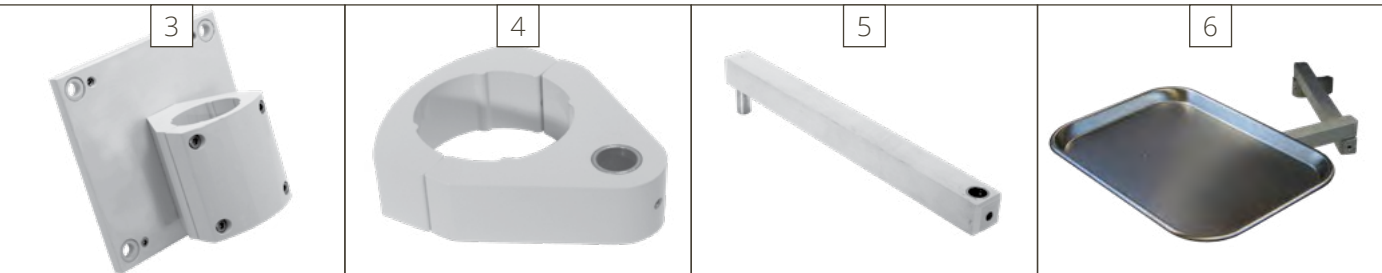
Boyd's LED Exam Lights provide the latest in operatory light technology. Each model emits clear and natural white light for the best visibility of the oral cavity by using LEDs for cool, power efficient and reliable operation. The diode technology designed into our models emits light in the white to IR range of the light spectrum, avoiding the UV range which could affect UV cure bonding compounds.

The company's latest model, C500 Camera Light System includes a fully integrated 30X zoom, High Definition Camera for capturing video and still images for consultation, records, training or other similar uses. The camera comes equipped with a wireless remote control for ease of use while taking video or images. The system can be used with any video or still image software and practice management systems.

Shared features of the C-series LED Exam Lights:

- Natural white color (5000K)
- Variable light intensity
- High color rendering index
- Optimal focal distance 25.5" to 27.5"
- Adjustable, sterilizer-safe hand grips
- Three axis head movement for optimum doctor and assistant functionality
- Available options include chair post, ceiling, and wall mounted

Options



Video game consoles

Make your office a fun place to visit.



Our Tablet versions are a popular choice for practices with limited space for a gaming area. The black wooden case comes in 3 different sizes to match your requirements. The console features a full size Tablet preloaded with 25 popular children's games to entertain children of all ages. The locked front access panel door prevents tampering with the Tablet or connections.

Features

- Perfect for touchscreen game applications
- Compact size makes it easy to position
- Compatible with other Android applications
- Easy Installation
 - Uses Standard 120vAC outlet
 - All mounting hardware included
- Tablet charges while mounted
- Standard color: Black

8. Wall Mount Tablet Case, 1" depth.

Black PN: 900-1156

9. Slim Tablet Cabinet, 5" depth.

Black PN: 900-1155

10. Regular Tablet Cabinet,

10" depth. Black PN: 900-1154

11. 18 1/2" Tablet Console, Available in

7 different colors PN: 900-1160-XX

Brighten up your office with the 18 1/2" tablet console. Available in six colors plus black.



Compare products

	M300X	M3000FB	M3000LC	M3000CB	M3010FB	M3010LC	M3010CB	E530	E535	PB4000	PB4001
WEIGHT CAPACITY											
Weight Capacity (lbs)	500	500	500	500	500	500	500	350	350	350	350
DIMENSIONS											
Minimum Seat Height (inches) From highest point of seat frame	25.5	25.5	22	19.5	25.5	22	19.5	19	19	27.5	27.5
Maximum Seat Height (inches) From highest point of seat frame	25.5	25.5	30	33	27.5	30	33	26	26	27.5	27.5
Width Without Arms (inches)	24.25	24.25	24.25	24.25	24.25	24.25	24.25	20	20	26	26
Nominal Length (inches)	70.5	70.5	70.5	71.5	63.5	63.5	66.75	58	58	76.5	76.5
POWER REQUIREMENTS											
Amps	10	10	10	10	10	10	10	N/A	8	N/A	N/A
220v AC Convertible	•	•	•		•	•				+	+
FEATURES											
Number of Motorized Functions	1	1	2	2	1	2	2	N/A	1	N/A	N/A
Steel Frame	•	•	•	•	•	•	•	•	•		
Putty or Black Trim	•	•	•	•	•	•	•	•	•	•	•
Non-Articulating Headrest	•	•	•	•	•	•	•				
Single Articulating Headrest										•	•
Dual Articulating Headrest								•	•		
Choice of Headrests	•	•	•	•	•	•	•	•	•	•	•
Programmable Foot Control	•	•	•		•	•					
Programmable Hand Control on Chair Back				•			•				
Detachable Programmable Foot Control				+			+				
Auto Return to Home	•	•	•	•	•	•	•				
Safety Stop Feature	•	•	•	•	•	•	•				
120vAC Electrical Outlet	•	•	•	•	•	•	•			+	+
Cantilever Style Base (14" Stroke)				•			•				
Vertical Column Base (8" Stroke)			•			•			•		
Pump Base								•			
Electric Hydraulic Base									•		
Seat Swivel	+	+	+	+	+	+	+	•	•		
Vinyl Upholstery/Standard Foam	•	•	•	•	•	•	•	•	•	•	•
Choice of Upholstery Styles	•	•	•	•	•	•	•	•	•		
Detachable Upholstery	•	•	•	•	•	•	•				
Ultraleather™ Upholstery	+	+	+	+	+	+	+	+	+		
Memory Foam	+	+	+	+	+	+	+				
Arm Rests	+	+	+	+	+	+	+	•	•		

• Standard Feature + Optional Feature

The Boyd product warranty

We guarantee our products with pride.



Our team of craftsmen and technicians fabricate and assemble Boyd products to the highest of workmanship standards. Their attention to detail coupled with the products durability has distinguished Boyd as the premier Orthodontic and Pediatric Dental equipment product company in the industry.

Boyd Industries warrants its chair and cabinetry products against component and/or workmanship defects by offering a three year parts and one year labor warranty commencing on the invoice date of your equipment. The company reserves the right to repair or replace, at its sole discretion, any component or assembly deemed defective. The warranty will be voided if products are improperly maintained or installed or altered from its original design. Products distributed by Boyd carry the original equipment manufacturer’s warranty.

Boyd will not be responsible for damage to product or office facilities caused by mishandling during transport and unloading. All products must be inspected upon receipt with any damage noted with carrier for filing of damage claim.

Office of Dr. Nathan Smith,
SmArt Pediatric Dentistry,
Spanish Fork, Utah.

Built to Last. Built for You. Built by Boyd.

Boyd proudly serves the Orthodontic and Pediatric Dentistry industry and knows the unique requirements of running a successful practice. Our products are designed with both functional and ergonomic features to allow you and your staff to perform at the highest efficiency.

Innovation and quality of craftsmanship is what Boyd is all about.

When buying Boyd you can be assured you will be receiving the highest quality equipment available on the market today.

Contact us for a design or equipment consultation or, visit our showrooms for tours and product demonstrations.

We look forward to supplying your present and your future equipment needs.



Boyd Industries, Inc.

12900 44th Street North, Clearwater, FL 33762

P 727.561.9292 | Toll Free: 800.255.2693 | **F** 727.561.9393

Customer service 727.471.5072 | customerservice@boydind.com

Technical Service 727.471.5071 | techservice@boydind.com

www.boydindustries.com



Wellkang Ltd
Suite B, 29 Harley Street
LONDON, W1G 9QR, U.K.
www.CE-Marking.EU

