

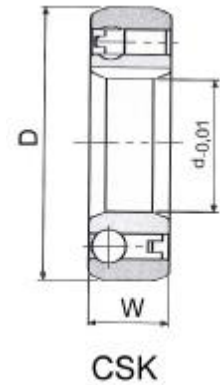
ONE-WAY CLUTCH BEARINGS— CSK Series



Model **CSK** is a sprag type clutch (freewheel) integrated into a 6200 series ball bearing (except sizes 8 and 40). It is bearing supported, shipped grease lubricated and protected against dust larger than 0.3mm diameter. Torque

transmission is ensured by a press fit assembly into a rigid outer housing with N6 tolerance, and onto a shaft with n6 tolerance. The initial bearing radial

clearance is set at C5, and is reduced if using the press fit as specified. Operating temperature range: -20°C to +100°C. Peaks up to +120°C are acceptable for short periods.

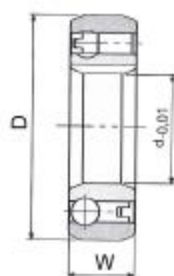


Bearing Number	Bore d(mm)	OD D(mm)	Width W(mm)	Torque (Nm)	Max. overrunning Speed (RPM)	Bearing loads		Single Weight (kg)
						Dynamic kN	Static kN	
CSK8	8	22	9	3.5	15,000	3.28	0.86	0.015
CSK12	12	32	10	12	10,000	6.10	2.77	0.05
CSK15	15	35	11	20	8,400	7.40	3.42	0.06
CSK17	17	40	12	24.5	7,350	7.90	3.80	0.07
CSK20	20	47	14	68	6,000	9.40	4.46	0.11
CSK25	25	52	15	105	5,200	10.7	5.46	0.14
CSK30	30	62	16	180	4,200	11.7	6.45	0.22
CSK35	35	72	17	240	3,600	12.6	7.28	0.33
CSK40	40	80	22	385	3,000	15.54	12.25	0.50

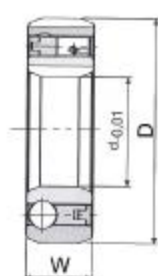
CSK—P and **CSK—PP** series are available upon request. CSK--P has the same construction and outside dimensions as type CSK, but has a keyway on the inner race; CSK--PP features a keyway in both the inner and outer race.

The Model CSK—P clutches must be secured to the shaft by customer supplied snap ring, set collar, spacer, etc.

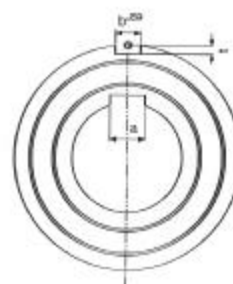
The outer race is secured with a press fit to a N6 tolerance. The Model CSK—PP clutches have a keyway on both races and must be secured by customer supplied snap ring, set collar, spacer, etc.



CSK—P



CSK--PP



Model	Keyway(a)
CSK12	4 x 1.2
CSK15	5 x 1.2
CSK17	6 x 1.6
CSK20	6 x 1.6
CSK25	8 x 2
CSK30	8 x 2
CSK35	10 x 2.4
CSK40	10 x 2.4