

# ST-290PC User Manual

## 1. ST-290PC Main Features

1. Record checking and removing
2. Key Lock function
3. Battery saving mode
4. Counting function
5. Compatible with both battery/power adaptor
6. USB connection with PC



## 2. ST-290PC Key Advantages

- Convenient operation with Light weight
- Automatic Hourly Data updating
- Record Removing function
- 1.15 Inch Blue LCD screen makes it easy on the eyes
- Cache Memory Capacity up to 500pcs messages (Recorded Every hour)
- Counting distance spans from 0.8M to 4M
- Adjustable LCD background light turns on/off when only people access
- Lower battery indicator on LCD screen
- Two languages for operation (English/ Chinese)
- Signal Indicator gives warning for weak signal
- Extended battery life with power supply
- Key Lock function eliminates improper operation
- Counting Data available on the LCD interface

## 3. Operation Guide

### 1. Record checking and removing

#### 1) Record Query

Press **⏏**, then press **▲** or **▼** to select "Record Query", Press **⏏** and enter in "Record Query"

Press **▲** or **▼** to check counting number in certain day

Press **⏏**, then press **▲** or **▼** to check counting number of certain period in certain day

#### 2) Record Removing

Press **⏏**, then press **▲** or **▼** to select "Record Query", press **▲** or **▼** to select "Record Removing";

Press **⏏** and removing record

Remarks: Press <Exit> to come back to the main screen.

### 2. Key Lock Function

This is designed to eliminate improper operation by unauthorized person

Press **▲** and then press **▼**, the key board is locked and screen shows "System locked"

Press  $\Delta$  and then press  $\nabla$ , key board is unlocked, and screen resume to main interface

Remarks: Press <Exit> to come back to the main screen.

### 3. Clock

#### 1) Set Up Time

Press  $\square$ , then press  $\Delta$  or  $\nabla$ , and select "time setting" then press  $\square$  to enter in "time setting";

Press  $\Delta$  or  $\nabla$  to select "Current time", press  $\square$  to enter in "current time";

Press  $\Delta$  or  $\nabla$  set up "Year", press  $\square$  to confirm;

Press  $\Delta$  or  $\nabla$  set up "Month", press  $\square$  to confirm;

Press  $\Delta$  or  $\nabla$  set up "Day", press  $\square$  to confirm;

Press  $\Delta$  or  $\nabla$  set up "Minute", press  $\square$  to confirm;

Press  $\Delta$  or  $\nabla$  set up "Second", press  $\square$  to confirm.

Remarks: Press <Exit> to come back to the main screen.

#### 2) Auto On/Off

Set up clock to turn on/off counting device

Press  $\square$ , then press  $\Delta$  or  $\nabla$ , and select "time setting", press  $\square$  to enter in "time setting";

Press  $\Delta$  or  $\nabla$ , and select "Timer setting", Press  $\square$  to confirm;

Press  $\Delta$  or  $\nabla$  to set "Power On Timer", press  $\square$  to confirm;

Press  $\Delta$  or  $\nabla$  to set "Power off Timer", press  $\square$  to confirm.

Remarks: Press <Exit> to come back to the main screen.

### 4. System Setting

#### 1) Battery Saving Mode

Press  $\square$ , then press  $\Delta$  or  $\nabla$ , select "system setting", press  $\square$  to confirm.

Press  $\Delta$  or  $\nabla$ , select "battery saving mode", press  $\square$  to confirm.

Press  $\Delta$  or  $\nabla$ , select "on/off", press  $\square$  to confirm.

Remarks: Press <Exit> to come back to the main screen.

#### 2) Sensitivity Setting (Detection distance and accuracy)

Press  $\square$ , then press  $\Delta$  or  $\nabla$ , select "system setting", press  $\square$  to confirm;

Press  $\Delta$  or  $\nabla$ , select "Sensitivity Setting", press  $\square$  to confirm;

Press  $\Delta$  or  $\nabla$ , select "high / medium / low", press  $\square$  to confirm.

Remarks:

Suggested to select high sensitivity for high volume to raise power sensitivity

Suggested to select low sensitivity for low volume to extend battery life

The red LED on receiver flashes, when transmitter is placed away from receiver far than accurate distance. It is suggested to move both part closer to solve this problem.

#### Language Setting

### 3) Language Setting

Press **Enter**, then press **△** or **▽**, select “system setting”, press **Enter** to confirm;

Press **△** or **▽**, select “language setting”, press **Enter** to confirm;

Press **△** or **▽**, select “Chinese” or “English”, Press **Enter** to confirm.

Remarks: Press <Exit> to come back to the main screen.

## 4、 Notice

(1) Optimal Detection Height:  $0.5\text{m} \leq$  The position of transmitter and receiver  $\leq 1.5\text{m}$ , receiver and transmitter is placed at same height with opposite direction.

(2) Optimal Detection Distance: Max Distance is 4M, Min Distance  $\geq 0.8\text{m}$  (Transmitter and receiver should be placed at same height with distance  $\leq 3\text{mm}$ )

(3) LED indicator flashes every second when voltage  $\leq 2.3\text{V}$  or transmitter and receiver don't have connection signal.

(4) In order to save battery, display screen uses low brightness with faster refresh frequency

## 5、 Installation of battery and power adaptor

### 1) Installation of Battery

1) Put two 1.5V SIZE AA batteries into each set of the people counter's back battery housing

2) The Red LED indicator flashes every 6 second when battery in normal status, and flashes every 1 second in low battery status

3) The clock setting is needed after replacing battery.

4) The clock setting will be saved after replacing battery when connecting with computer via USB Cable,

5) The Alkaline Battery is recommended. Rechargeable Battery might lead to installation difficulties due to the differences size and measurement.

### 2) Installation of Power Adaptor

Plug the cable head into transmitter hole and work (same for receiver)

**Remarks: 1. Power Adaptor can be used together with battery**

**2. This people counter could equip with either Chinese Standard adaptor or Euro Standard adaptor or American Standard adaptor according to customer requirement.**

## 6、 PC Connection

### 1. PC Tools installation

Step 1, place installation CD in CD-ROM, and double click “PEOPLE

COUNTER” folder



Step 2  
Double Click “data output” file  
(As showed in left graph)



Step 3  
Click “Next Step” Button  
(As showed in left graph)



Step 4  
Click “Next Step” Button  
(As showed in left graph)



Step 5  
Click “Next Step” Button  
(As showed in left graph)



Step 6  
Click "Close" to finish installation  
(As showed in left graph)

## 2. USB Connection Setting

Place installation CD in CD-ROM, and plug the bigger USB cable head into computer USB port and finish connection. "New hardware is available" will showed on screen. (As showed in bellow graphs)



Step 1,  
Choose "Auto Run" to begin installation, click "Next Step".  
(As showed in left graph)



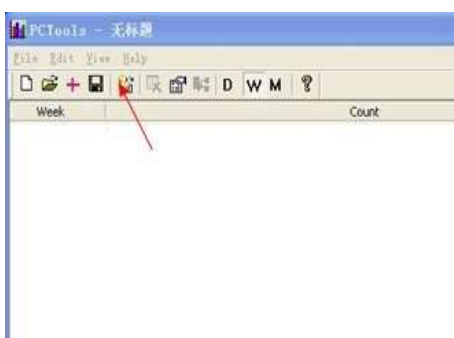
Step 2,  
Click "Close" to finish drive installation  
(As showed in left graph)



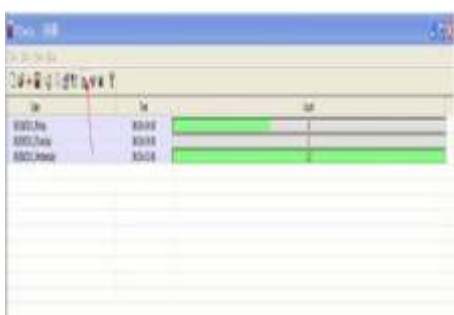
Step 3,  
Double Click PCTools on the desktop  
(As showed in left graph)



Step 4,  
Click “Activate” Button on the  
tool bar  
(As showed in left graph)



Step 5,  
Click input program on the tool  
bar  
(As showed in left graph)



Step 6  
Click “D” or “W”, or “M” to check records  
in different period of day  
“D” means the records in whole day  
“W” means the records in whole week;  
“M” means the records in whole month

### 3. Download Data to Computer

1. Click “Menu” on the tool bar
2. Click “Save” as showed bellow



3. Input name in the folder bar, like “ST-290PC”, and click “save”
4. Double click the folder “ST-290PC” on the desktop

**Remarks:** 1、 Data can be read only on computer which can't be removed on computer  
2、 Data in certain period of certain day can be read or

removed directly on people counter  
3、 Further system updating might not be listed in user manual.

## **7、 Package Contents**

ST-290PC Transmitter	(1)
ST-290PC Receiver	(1)
USB Cable	(1)
CD-ROM	(1)
Power Adaptor	(2)
Fastening Adhesive Tape	(2)
Mounting Hooks(Concave)	(2)
Mounting Hooks(Convex)	(2)
M3X15 Screws	(4)

Distributed by:  
Suntech Instruments Co Ltd  
Tel: 3525 7168 Fax: 3525 2177  
Email: [sales@suntech-hk.com](mailto:sales@suntech-hk.com)  
[www.suntech-hk.com](http://www.suntech-hk.com)