

# EL-WiFi-TC

## External Thermocouple WiFi Temperature Sensor



- Thermocouple probe temperature measurement range -270 to +1300°C (-454 to +2372°F) (probe dependent)
- Wirelessly stream and view data via WiFi on PC or FilesThruTheAir™ Cloud
- Easy sensor set-up using free PC software application
- View and analyse multiple sensors, including graphing of historic data
- Configurable high and low alarms with indicator
- Sensor memory stores all data even if WiFi is temporarily disconnected

The EL-WiFi-TC measures the temperature of the environment in which the probe is situated. This sensor is typically accurate to  $\pm 1.5^{\circ}\text{C}$  /  $\pm 3^{\circ}\text{F}$ . Data is streamed wirelessly over any WiFi network and can be viewed on a PC using free software or on the FilesThruTheAir™ Cloud.



During configuration, the sensor will search for an existing wireless network whilst physically connected to the PC. It can then be placed anywhere within range of the network. If the sensor temporarily loses connectivity with the network, it will log readings until it is able to communicate again with the PC application or FilesThruTheAir™ Cloud (max 30 days at 10 second sample interval).

The sensor is IEEE 802.11b compliant, supports WEP, WPA/WPA2 encryption and enterprise networks.

EL-WiFi-TC has a protection rating of IP44. The unit is freestanding, but can be attached to a wall or surface using the bracket provided.

### SPECIFICATIONS

	Minimum	Typical	Maximum	Unit
Battery life		>6		Months
Probe measurement range	K-type (supplied) -80 (-112) K-type -200 (-328) J-type 200 (-328) T-type -200 (-328)		+400 (+752) +1350 (+2462) +1190 (+2174) +390 (+734)	°C (°F)
USB supply voltage	4.5		5.5	Vdc
Operating temperature range	-20 (-4)		+60 (+140)	°C (°F)
Logging period (user configurable)	10 sec	10 min	12 hrs	
Transmission period (user configurable)	1 min	1 hr	24 hrs	
Temperature measurement range	-270 (-454)		+1300 (+2372)	°C (°F)
Temperature measurement resolution		0.1 (0.2)		°C (°F)
Temperature display resolution		0.1		°C
Temperature accuracy		$\pm 1.5^{\circ}$ ( $\pm 3$ )		°C (°F)
Dimensions	82 x 70 x 36mm (3.22 x 2.75 x 1.41")			

### ACCESSORIES

<b>PSU-5VDC-USB-USA</b>	USB Mains Power Adapter for USA
<b>PSU USB-UK</b>	USB Mains Power Adapter for UK
<b>PSU USB-EU</b>	USB Mains Power Adapter for EU
<b>EL-WiFi-Alert</b>	Audible and Visual Alarm for EL-WiFi Data Logging Sensors

### INCLUDED IN THE BOX

<b>EL-WiFi Wall Bracket</b>	Wall mounting bracket for EL-WiFi sensors
<b>K-TYPE PROBE 1M5</b>	1.5m K-type thermocouple with stainless steel probe
<b>CABLE USB A-MICRO B</b>	USB Type A to Micro B



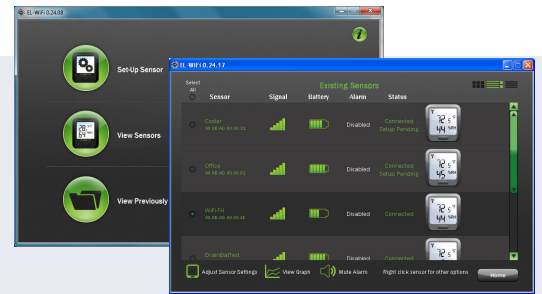
# EL-WiFi-TC

## External Thermocouple WiFi Temperature Sensor



### EL-WiFi-WIN

Lascar's WiFi software is available as a free download from [www.easylogwifi.com](http://www.easylogwifi.com). Easy to install and use, EL-WiFi-WIN allows easy connection of sensors to a WiFi network. The user can select where data is stored - the PC or the Cloud.



### EASYLOG CLOUD - Powered by FilesThruTheAir™

Interact with sensors via any internet-enabled device. Manage and monitor sensors, access event logs and set up email alerts. A Cloud account is created during the WiFi sensor set-up process using EL-WiFi-WIN with the choice of three account types depending on which features are required.

### FilesThruTheAir App

For Android users on-the-go, download the FilesThruTheAir™ app on GooglePlay. This app extends Cloud access and visibility to Android phone and tablet users, delivering an enhanced user experience and features otherwise unavailable via the traditional mobile web interface.



### Battery Life and Power Supply

The battery can be recharged (unit must be between 0 - 40 °C) via a PC, a USB +5V wall adapter, or a portable USB battery pack using the USB lead provided. It can also be permanently powered by a USB wall adapter or USB battery pack. Readings may be affected while the internal battery is being charged. However, once charged, continued connection of the charger will have no effect.

Battery life is dependent on: transmission period, WiFi encryption method, WiFi encryption key rotation frequency (determined by the router/access point), signal strength between router/access point and WiFi device, presence volume and type of WiFi traffic from other devices, sample rate and operating temperature.

Specifications liable to change without prior warning