

How to

SubCo

We make colors alive

?

About

We are a company that manufactures innovative printing solutions. Our goal is to create affordable products which are easy to handle. We are trying to be your first choice for printing on the materials.



www.subco.eu



info@subco.eu



+385 91 321 5926

Get to know our products



SubCo Transfer paper is special paper that is used with our Standard Dry coating for sublimation on white and light cotton, polyester, poly /cotton blends & spandex fabric.

SubCo Dark Magic paper is special paper that is used for sublimation on dark garments and it is used with Flex and Flock NO cut.



SubCo Standard Dry coating is used for prints on white and light color fabrics. It is also used for decorating white and light fabric with flex and flock NO cut.



SubCo Dark magic is used for sublimation on dark cotton, polyester, poly /cotton blends & spandex fabrics. It can be also used with flock or flex NO cut on dark fabric.

SubCo Glitter powder is special powder that is used for decorating white, light and dark garments. It gives shiny and glittery effect to the fabric. You can find it in gold, silver, white, red, blue and rose gold color.



SubCo Flock NO cut is cut fast and simple process for decorating light and dark fabric, in 12 different colors. Black, white, red, orange, yellow, bottle green, real green, purple, magenta, turquoise, sky blue and dark blue.

SubCo Flex NO cut is fast and simple process for decorating light and dark fabric, in 14 different shades. White gold, red gold, gold, gray, violet, turquoise, brown, dark blue, magenta, silver, green, red, holo and sport gray.





SubCo ink is sublimation ink that is used to decorate white, light and dark garments and other sublimation blanks.

SubCo Sublimation paper is used for classical sublimation. It is used in textiles, arts and craft projects. A heat press can transfer the image from it onto clothing, canvas or other surfaces.



Printer

Which printers you can use with SubCo products?

You can use any reliable ink-jet printer with micro-piezo heads. The models that are recommended for use are Epson L-series(L310,L1300), Epson Eco-tank series(ET 2750, Et4750), Epson ITS-series(I3060, I3070), Ricoh SG3110DN.

How to set up printer?

Fill the printer cartridges with SubCo inks or any classical sublimation ink. Carefully fill each ink tank with right ink color. The next step is to connect your printer to the computer and installing the drivers that you are supplied with.



Step 1

Open the front cover of your printer.

Step 2

Locate the screws on the guide wheels carrier and take them out
The place where screws are
(Green circle marks - Picture2)



Picture2

Step 3

Take the guide wheels carrier out
(Picture2)

Step 4

Push the plastic guides out of the carrier. (Red circle marks - Picture3, Picture 4)
Leave the plastic guides at the ends
(Yellow circle marks - Picture3)



Picture3

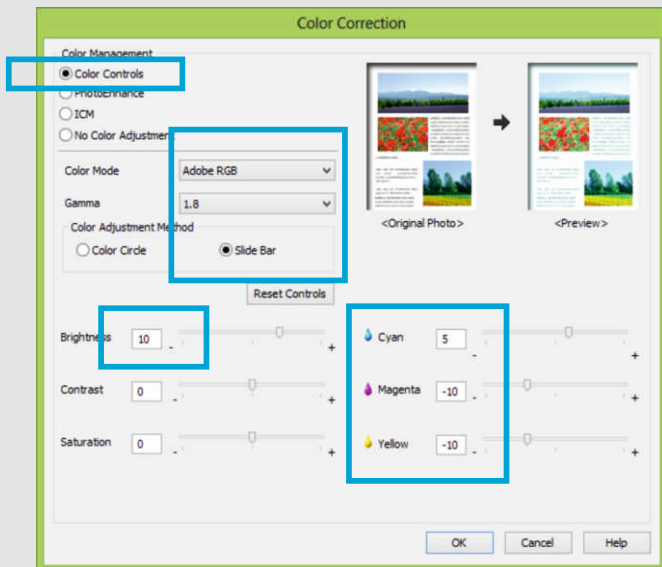


Picture4

Printer preset for light garments

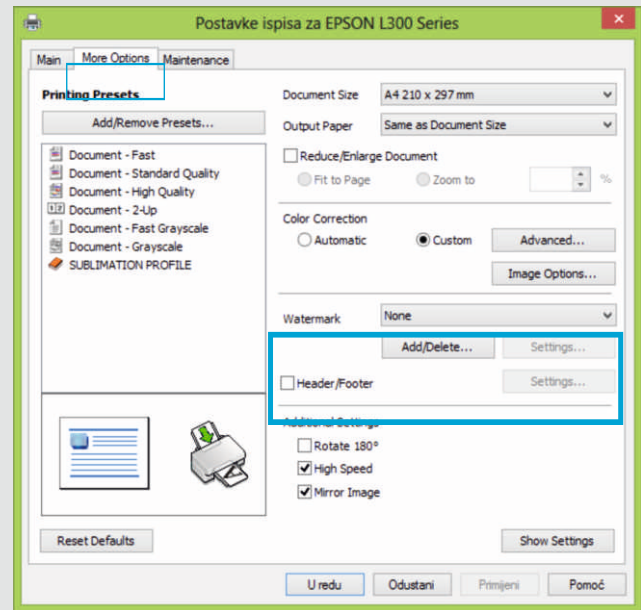
Step 1

Setup the printer preferences.
Go to Control panel - printer and
faxes
Chose Epson L310 (right click)
then choose Printing Preferences.
Click More Options tab.
On color corection click Custom
and then chose Advanced.



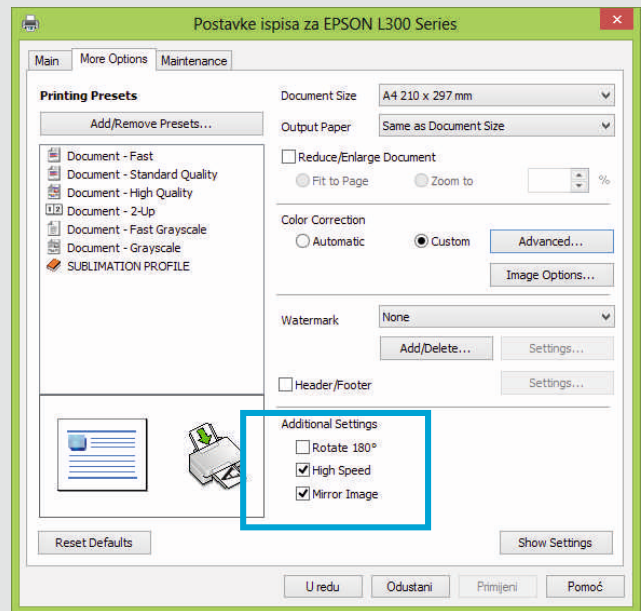
Step 3

Use the Mirror Image Option



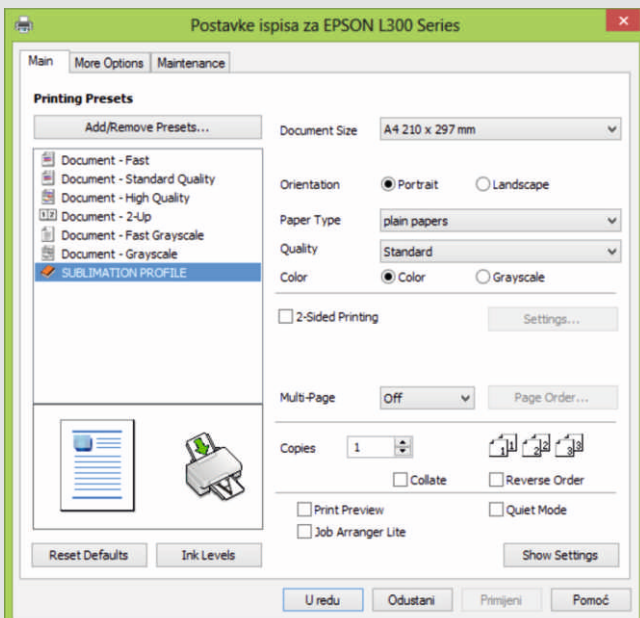
Step 2

Setup options as on image below



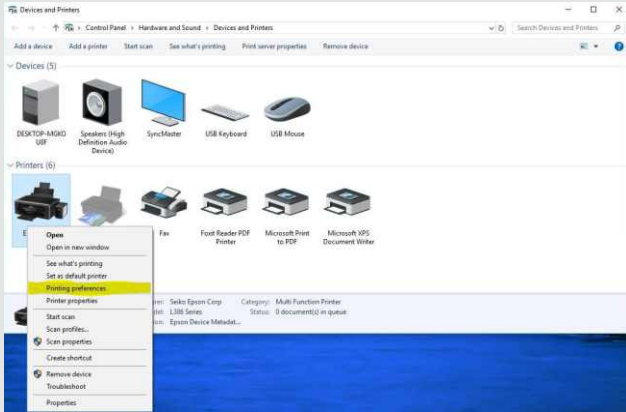
Step 4

Go to Add/Remove Presets and
save profile that we've made

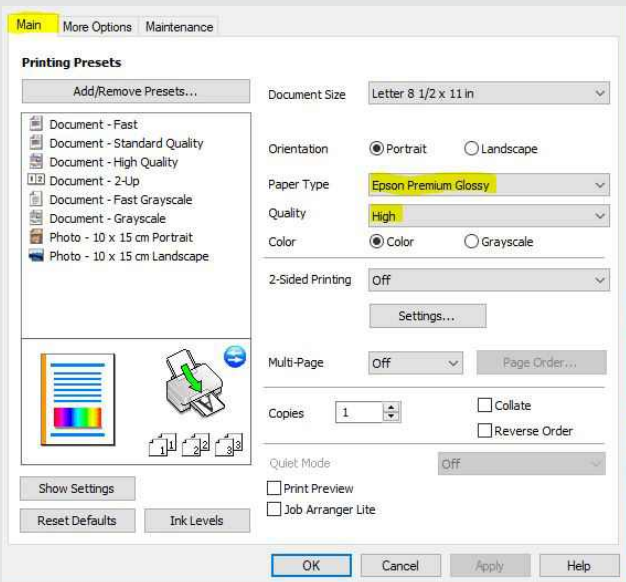


Printer preset for dark garments

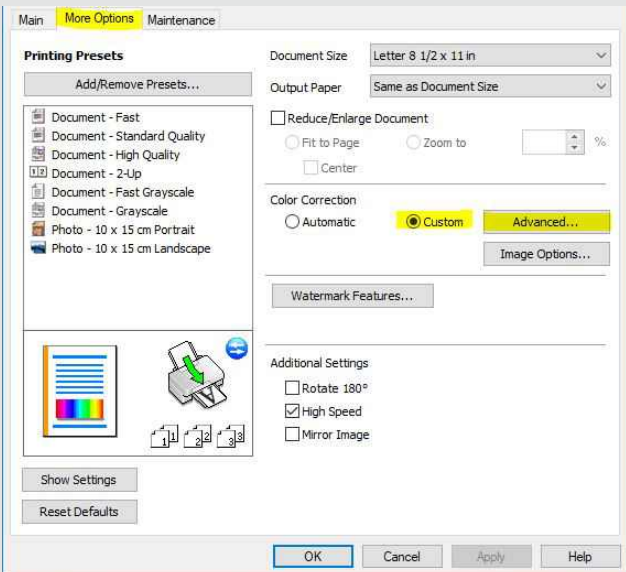
Step 1



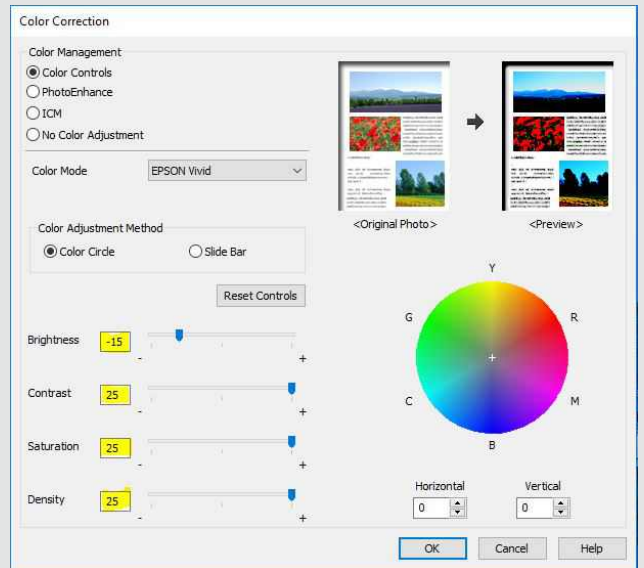
Step 2



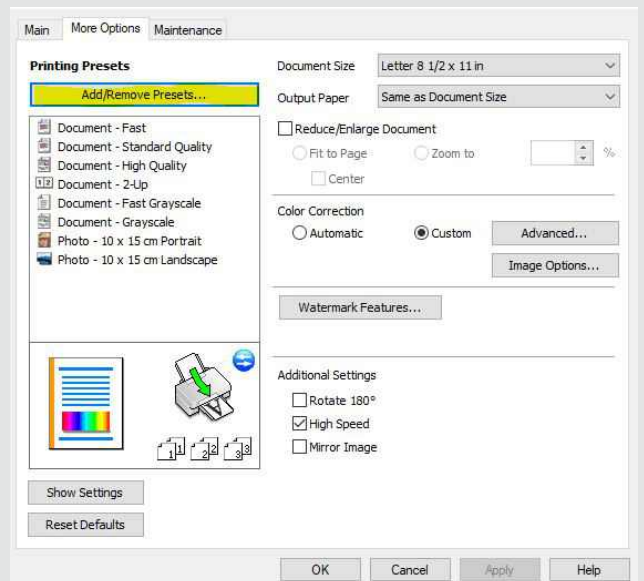
Step 3



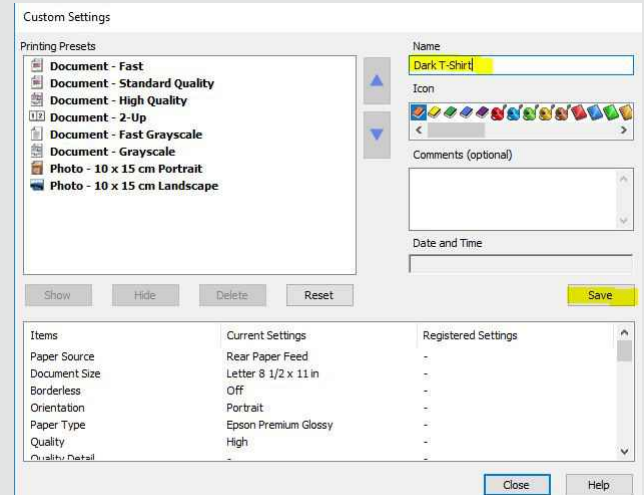
Step 4



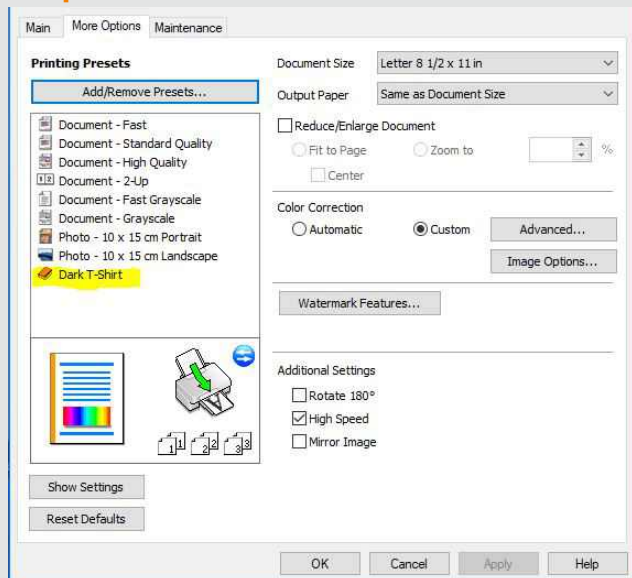
Step 5



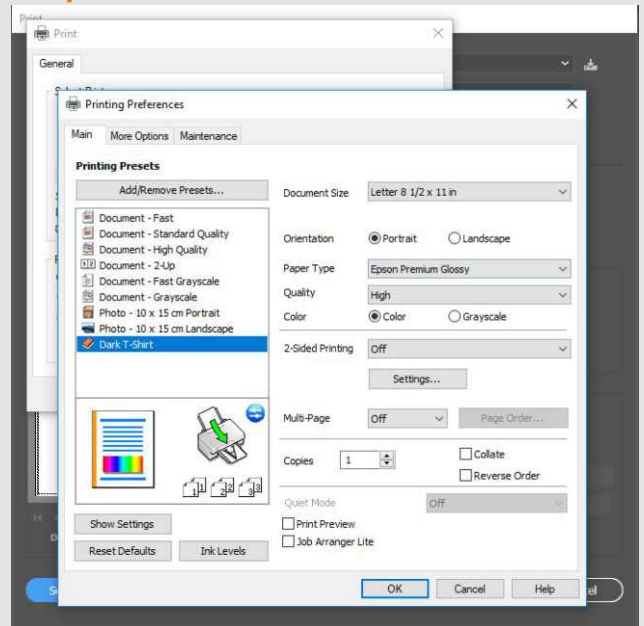
Step 6



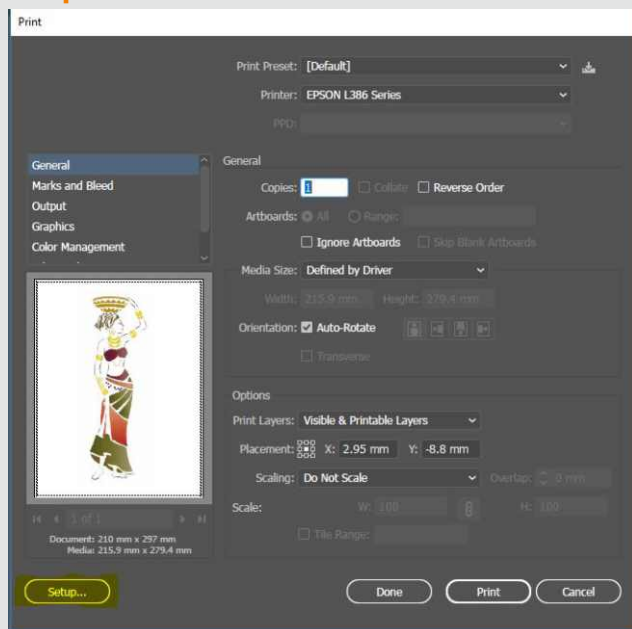
Step 7



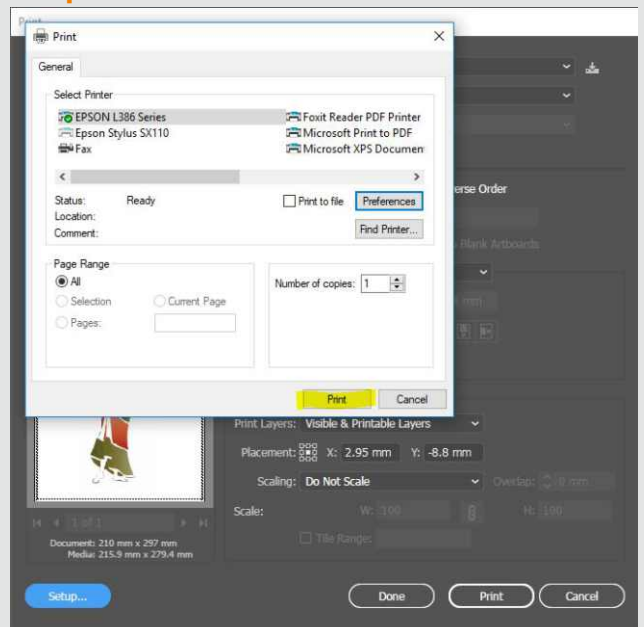
Step 10



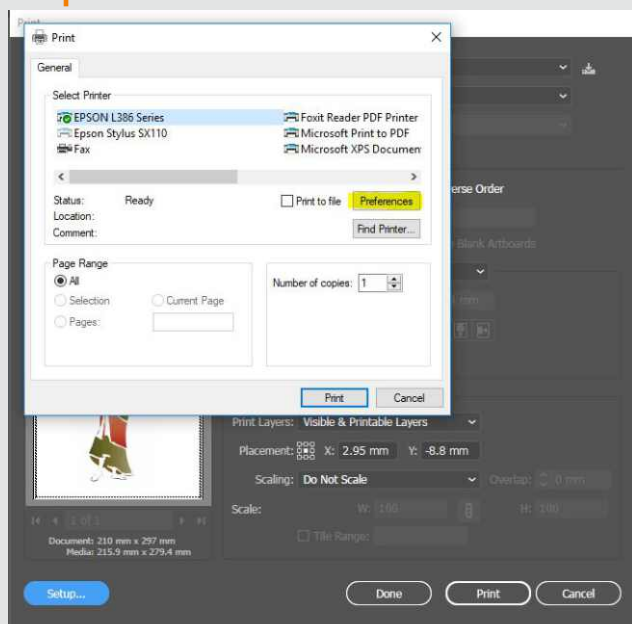
Step 8



Step 11



Step 9



Use the default ICC profile when printing on dark garments

ICC profile

What is ICC profile and where to get it?

ICC profile is a set of data that characterizes a color input or output device. Using the device with inappropriate ICC profile will result as a bad color input / output.

SubCo ICC profile comes either with Subco products set, thought the official website download section or it is being send throught the e-mail by the users request.

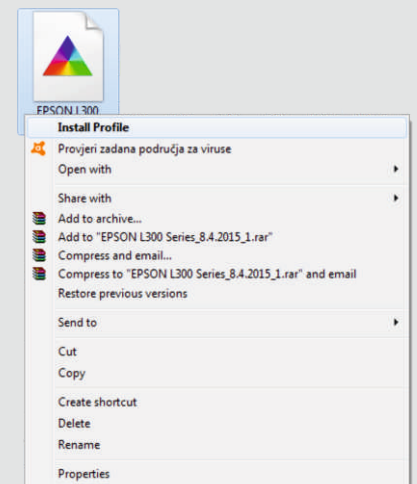
How to install ICC profile?

Once you have obtained the Subco ICC profile, installation can be applied in few very short steps.

Step 1: Locate the SubCo ICC profile on your computer.

Step 2: Right click on the ICC profil icon.

Step 3: Chose "Instal Profile»



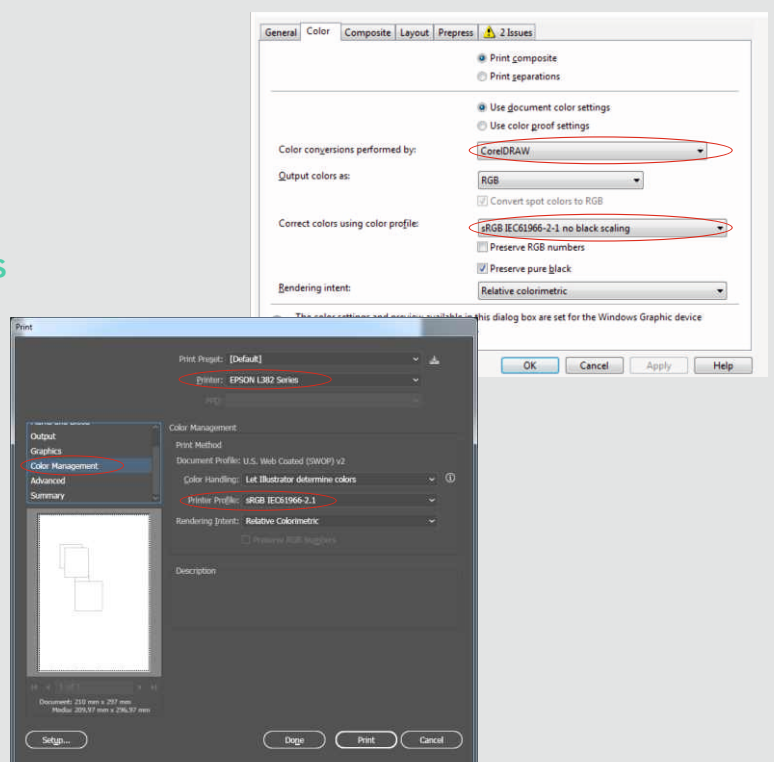
How to use installed ICC profile?

Once you installed, ICC profile should appear in most of the graphic editing softwarees.

On the other hand, some of the softwares will not recognize the ICC profile automatically so you will have to locate them by yourself.

Example of setting the ICC profile up in Corel and Illustrator

Adobe Illustrator will recognize the installation of the ICC profile by itself while Corel Draw in most cases won't. To chose the ICC profile in Corel Draw, as shown below, you will have to chose the "Load color profiles.." option and locate the ICC profile on your computer. After you have configured your software to use the printer and technology matching ICC profile you can click on the "Print" button and print your desired graphic solution.



SubCo procedure

Graphics preparation

The proposed tool to be used is COREL for the print outs, even though it is possible to get the same results using any of the other software programmes. It is possible to print out large and long sheet formats without any additional graphic preparations.

Printing

Prior to initial printout, in order to confirm whether head cleaning is needed, and so as to avoid lines appearing in the print out, it is a useful measure to check the nozzle status. The paper is loaded (maximum 10 sheets) so as to get the print out on the blue side of the paper, the side of the paper sheet where the print out is expected to appear. In order to get the colours on the print out the same as on the monitor, an ICC profile is used, which regulates the mixing of the colours during the printing procedure. In most of the graphic tools it is found in the print dialogue under options «Color” or «Colour management”. After printing, the colours on the paper are not altogether dry and it is important that the print out is handled with care.

Coating

After the graphics had been printed, it is necessary to coat it with a stabiliser. The stabiliser is put manually on the paper, as the paper is easily moved in such a way that the stabiliser is evenly spread over the print, because it is extremely important that the stabiliser have been applied all over the print evenly. Keep in mind that the colour is not dry, so that the stabiliser needs to catch on only to the places where the color is. After this had been done, it is necessary to lightly shake the paper in order to get rid of excess stabiliser, which can be used again for the next print.

If SubCo Standard or SubCo Glittery powders are applied, it is necessary to shake the paper a bit more in order to remove excess stabiliser. For SubCo Standard it is necessary to dry stabilizer with color, so after SubCo powder is applied over the print put the paper under heatpress, graphic face up and put the heater approximately 1cm (0,4 inch) above the graphic.

Temperature of heating is 180°C and time 2 min. After that the coating and ink will be dry and you can continue transfer onto textile.

Thermo-pressing

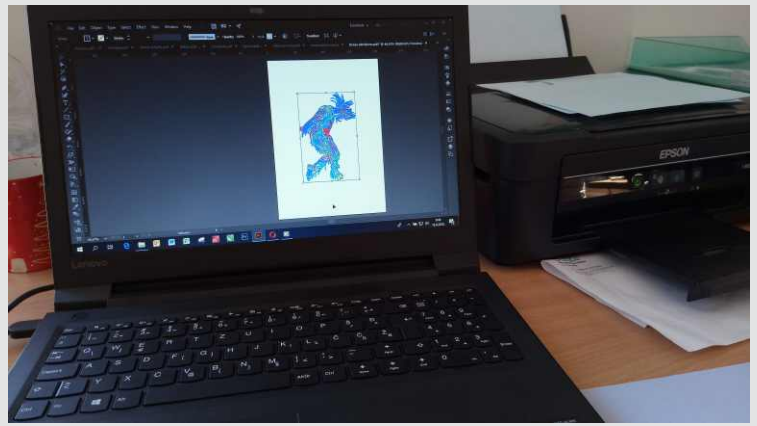
In order to transfer the graphics onto textiles, it is necessary to set the temperature of the thermo-press to 180°C and check that the real temperature on the heat plate is 180°C everywhere. The time needed for the print off is 34 seconds, and the pressure must be strong enough (when working with compressedair thermal presses, the pressure is between 4-5 bars).

Step 1

After you have chosen the graphic print on the unprinted side.

Step 2

Apply the dry powder onto the printed surface by sprinkling powder over the wet ink or by dragging the paper through the dry powder inside the container.



Step 3

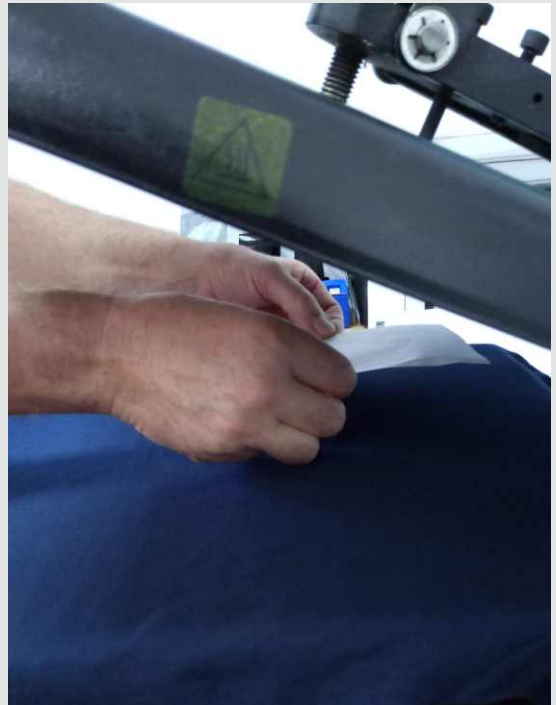
Shake off any excessive powder into the tray for future use by tabbing the paper gently.

Step 4

Place the SubCo paper under the heat press with printed side up. Close heat press 2" from the paper for 34 seconds in order to cure the ink and powder. Carefully not to smudge the ink and powder as it will be still sensitive to touch.

Step 5

Place the SubCo paper onto the fabric carefully in order to avoid smudging the image. Press the image 180°C for 34 seconds using moderate pressure. Peel cold or after 40 seconds, diagonally from one corner to another in a smooth even motion while holding the fabric down with the other hand.



SubCo flex no cut

After printing wanted design on your T-shirt put it once again under the heat press. Put Flex no cut on design, press it for 30 seconds on 180°C. Peel cold or after 40 seconds.

For white and light fabric use Standard Dry coating and for dark fabric use Dark Magic dry coating.



SubCo flock no cut

After printing wanted design on your T-shirt put it once again under the heat press. Put Flock no cut on design, press it for 30 seconds on 180°C. Peel cold or after 40 seconds.

For white and light fabric use Standard Dry coating and for dark fabric use Dark Magic dry coating.



SubCo tips

- *For printing on dark cotton you can only use vector graphic.
- *For printing only white design on dark T-shirt set settings of colors C=0,M=0,Y=0,Bk=10%
- *Colors that you don't want to be printed should be recolored to white.
- *To have a clean lines on printed graphic for dark fabric you have to gently remove any excess of SubCo powder using your hands before applying paper onto the fabric.